

INSTALLATION INSTRUCTIONS

LOW VOLTAGE LANDSCAPE LIGHTING

INSTALLATION INSTRUCTIONS

IMPORTANT: PLEASE READ BEFORE INSTALLATION

This luminaire is intended for installation in accordance with local codes and the National Electric Code (NEC). Failure to adhere to these codes and instructions may result in serious injury, property damage and void the warranty.

These instructions do not intend to cover all variations in installation, operation maintenance or mounting situations.

1. Make sure that the power is turned OFF before installing or servicing this luminaire.
2. Warning: risk of electrical shock. Install all luminaires 10 feet (3.05M) or more from pool, spa or fountain.
3. This luminaire is intended to be used only with a power supply (transformer) rated maximum of 300 watts (25 AMPS) at 15 volts.
4. DO NOT INSTALL in walls where the capstones overhang the wall less than 3/4" [19mm] or under stairs where the tread overhangs the riser less than 3/4" (19mm).
5. Wiring connections must be made with UL listed wire connectors that are suitable for outdoor use.
6. Position the low voltage wire and wire connector so that it is located within 6 inches (15.2 cm) from a building structure, a luminaire, or fitting.
7. The main low voltage cable is intended for shallow burial - less than 6 inches (152 mm).

IMPORTANT SAFETY INSTRUCTIONS

INSTRUCTIONS PERTAINING TO A RISK OF FIRE, OR INJURY TO PERSONS **Lighted lamp is HOT!**

WARNING – To reduce the risk of FIRE OR INJURY TO PERSONS.

1. Turn off/unplug and allow to cool before replacing LED module.
2. LED module gets HOT quickly! Contact only switch/plug when turning on.
3. Do not touch the hot lens, guard or enclosure.
4. Keep LED module away from materials that may burn.
5. Do not touch LED module at any time. Use a soft cloth. Oil from skin may damage LED module.
6. Do not operate the luminaire fitting with a missing or damaged shield.

SAVE THESE INSTRUCTIONS

IMPORTANT: PLEASE READ BEFORE INSTALLATION

NOTE: This equipment has been tested and found to comply with the limits for a Class B digital device, pursuant to part 15 of the FCC Rules. These limits are designed to provide reasonable protection against harmful interference in a residential installation. This equipment generates, uses and can radiate radio frequency energy and, if not installed and used in accordance with the instructions, may cause harmful interference to radio communications. However, there is no guarantee that interference will not occur in a particular installation. If this equipment does cause harmful interference to radio or television reception, which can be determined by turning the equipment off and on, the user is encouraged to try to correct the interference by one or more of the following measures:

- Reorient or relocate the receiving antenna.
- Increase the separation between the equipment and receiver.
- Connect the equipment into an outlet on a circuit different from that to which the receiver is connected.
- Consult the dealer or an experienced radio/TV technician for help.

Warning: Changes or modifications not expressly approved by the party responsible for compliance could void the user's authority to operate the equipment.

This device complies with part 15 of the FCC Rules. Operation is subject to the following two conditions:

- (1) This device may not cause harmful interference,
and (2) this device must accept any interference received, including interference that may cause undesired operation.

RF Exposure Statement:

This equipment complies with FCC/ISED RF radiation exposure limits set forth for an uncontrolled environment. This equipment should be installed and operated with a minimum distance of 20 centimeters between the radiator and your body.

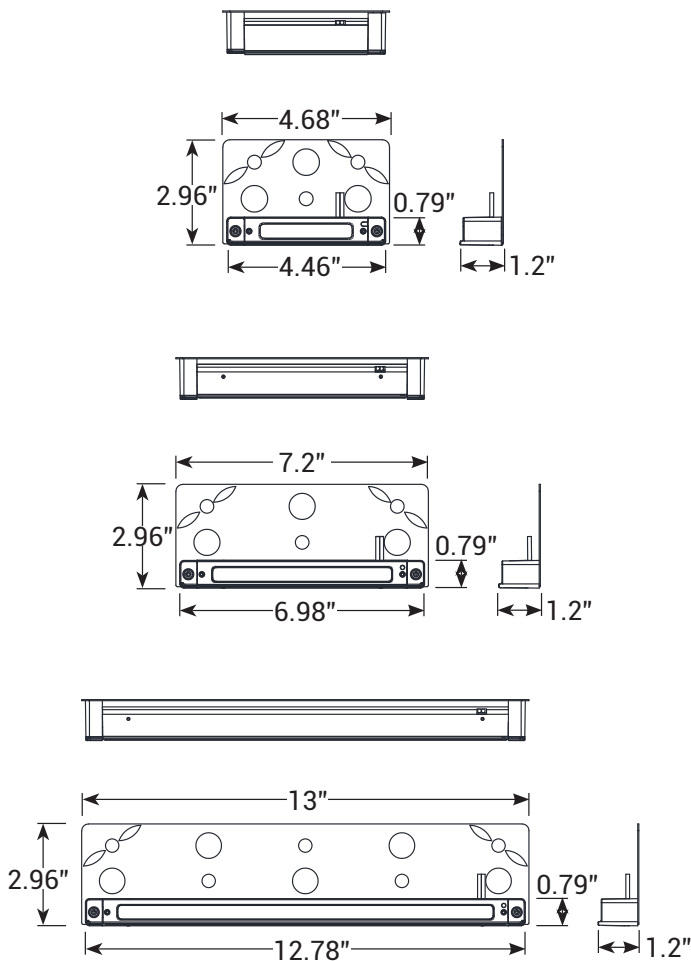
PACKAGE CONTENTS

- A. (1) Fixture Body with Mounting Plate and Glare Guard
- B. (2) Screws
- C. (2) Wall Anchors

PARTS REQUIRED (SOLD SEPARATELY)

- A. (1) RF Remote

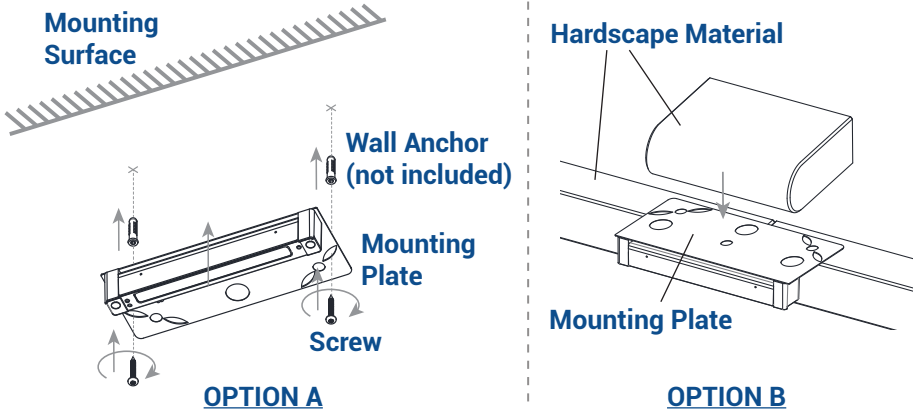
PRODUCT DIMENSIONS



INSTALLATION INSTRUCTIONS

INSTALLATION METHOD 1: MOUNTING WITH MOUNTING PLATE

1 INSTALL MOUNTING PLATE TO MOUNTING SURFACE



Route the fixture wire to the main low voltage supply cable. A "V" shaped notch can be cut into the mounting surface or the hardscape material to aide in wire management.

1. Option A: Attach the mounting plate onto the desired mounting surface and secure with the screws.

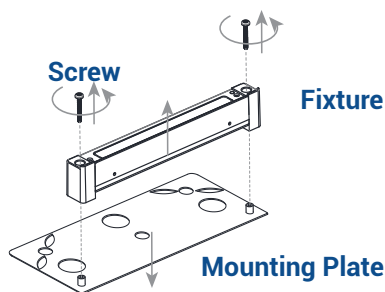
Note: Wall anchors are required for concrete or brick mounting surface.

2. Option B: Insert the mounting plate in between layers of hardscape material. Use appropriate material (not provided) to secure the mounting plate in place.

Go to Step 4 to complete the installation.

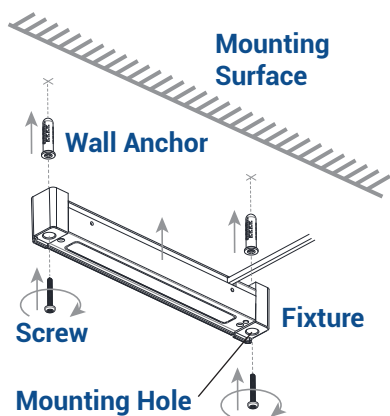
INSTALLATION METHOD 2: DIRECT MOUNTING

2 REMOVE MOUNTING PLATE FROM FIXTURE



Remove the mounting plate from the fixture.

3 INSTALL FIXTURE TO MOUNTING SURFACE

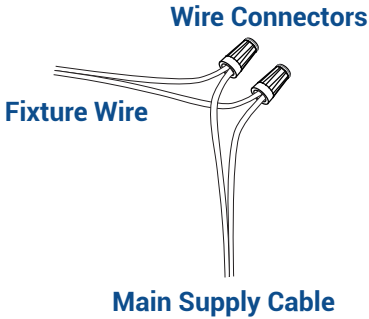


Attach the fixture onto the desired mounting surface and secure with the screws.

Note: Wall anchors are required for concrete or brick mounting surface.

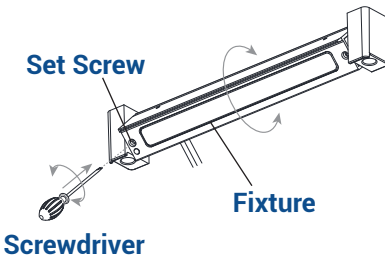
INSTALLATION INSTRUCTIONS

4 WIRE CONNECTIONS



Strip both leads from the fixture wires. Using two UL listed wire connectors (sold separately), connect the fixture wires to the main supply cable leads.

5 ADJUST FIXTURE ANGLE



Using a screwdriver, loosen the set screws to adjust the fixture to your desired angle. Always tighten the set screws after the desired angle is achieved.

RF REMOTE

To continue the installation of the hardscape, refer to the instruction sheet that comes with the purchased remote.

INSTALLATION INSTRUCTIONS