

FOUNTAIN DIFFUSER

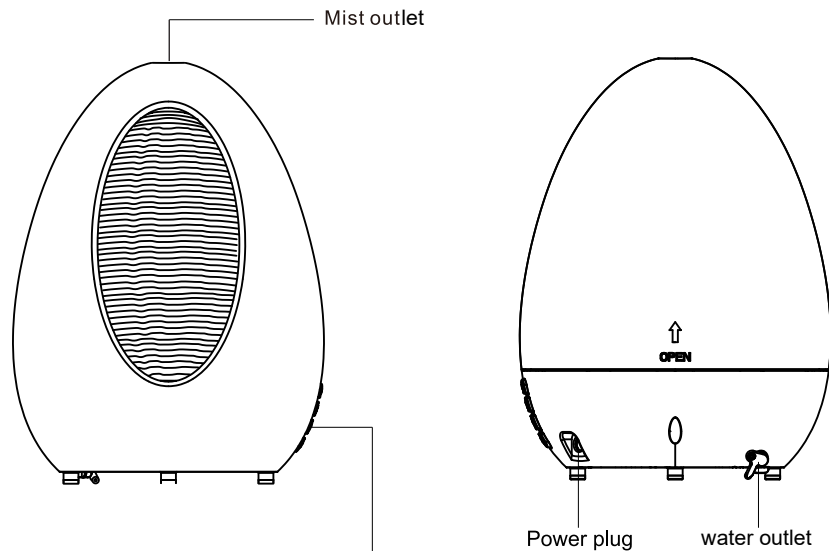
Instruction manual

GB-331

Thank you for your purchase. Before using this product, please read this manual carefully and correctly.

Voltage: DC24V-750mA
Power : 18W
Water : 140ml(MAX)

Szie : H209 W155 D123 (mm)
G.W. : 538g
Made in China



LED light Buttons

1st press: LED lights are on with auto color changing
2nd press: LED lights fix one color
3rd press: LED lights are off

Bluetooth Buttons

1st press: Bluetooth is on
2nd press: Bluetooth is off

ON/OFF Buttons

1st press: LED lights are on and with mist come out;
2nd press: LED lights are on and with mist off;
3rd press: the diffuser is totally off.

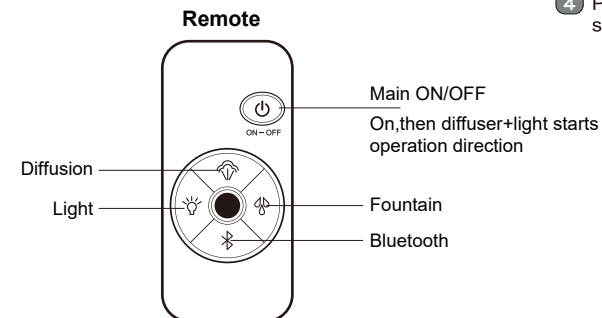
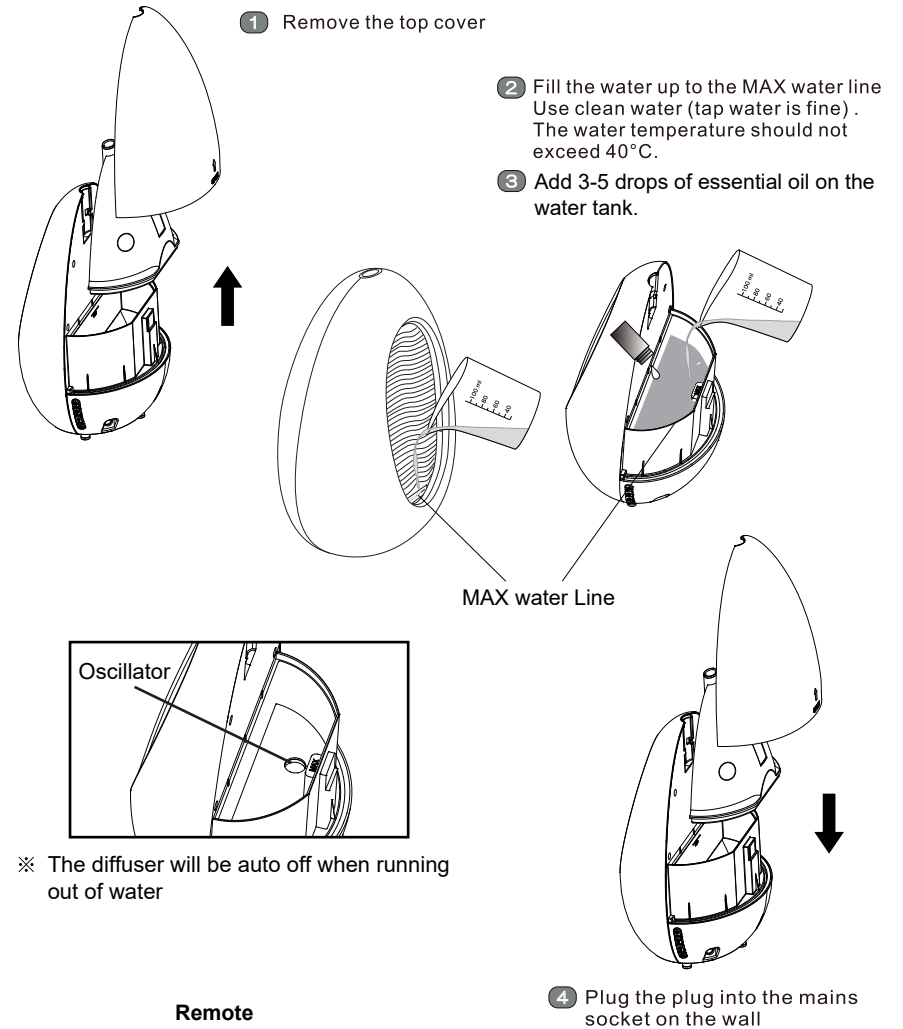
Mist Buttons

1st press: mist come out
2nd press: mist off

When the flume water less...

The diffuser will auto off when running out of water.
Pls fill in the water to restart the diffuser.

Instructions



Problem

Problem	Possible cause	Solution
The power-on light does not go on and the aroma diffuser does not work.	The aroma diffuser is not (properly) connected to the mains.	Put the plug(properly)in the wall socket and switch on the aroma diffuser.
The power-on light is on,the fan works but no mist comes out of the mist outlet.	The water tank is empty or the water level is too low.	Fill the water tank with fresh water.
The aroma diffuser produces an unpleasant smell.	The water in the water tank is not clean or has been left in the water tank too long.	Remove the cap of the water tank and leave the tank open in a cold place for at least 12 hours. Clean the water tank and fill it with fresh water.
The power-on light is on but the aroma diffuser does not work.	There is too much water in water basin.	Drain the water from water basin. Tighten the cap of the water tank firmly.
The aroma diffuser does not produce enough mist.	There is scale on the oscillator. The water in the water tank is dirty or has been left in the water tank too long.	Clean the water tank and fill it with fresh water.
The aroma diffuser strange noises when it is on.	The water level is too low The aroma diffuser is standing on an unstable surface.	Make sure there is enough water tank in the water tank. Place the aroma diffuser on a smooth, flat and stable surface.

Warning

This appliance can be used by children aged from 8 years and above and persons with reduced physical, sensory or mental capabilities or lack of experience and knowledge if they have been given supervision or instruction concerning use of the appliance in a safe way and understand the hazards involved. Children shall not play with the appliance. Cleaning and user maintenance shall not be made by children without supervision.

FCC ID:2AGK7A13GB331

This equipment has been tested and found to comply with the limits for a Class B digital device, pursuant to part 15 of the FCC Rules. These limits are designed to provide reasonable protection against harmful interference in a residential installation. This equipment generates, uses and can radiate radio frequency energy and, if not installed and used in accordance with the instructions, may cause harmful interference to radio communications. However, there is no guarantee that interference will not occur in a particular installation. If this equipment does cause harmful interference to radio or television reception, which can be determined by turning the equipment off and on, the user is encouraged to try to correct the interference by one or more of the following measures:

- Reorient or relocate the receiving antenna.
- Increase the separation between the equipment and receiver.
- Connect the equipment into an outlet on a circuit different from that to which the receiver is connected.
- Consult the dealer or an experienced radio/TV technician for help.

MODIFICATION: Any changes or modifications not expressly approved by the grantee of this device could void the user's authority to operate the device

This device complies with part 15 of the FCC Rules. Operation is subject to the following two conditions:

- (1) This device may not cause harmful interference, and
- (2) this device must accept any interference received, including interference that may cause undesired operation

⚠ Caution

- Replacing the water regularly to avoid bacterial contamination which may be projected into the air.
- Switch off the appliance and disconnect it from the mains immediately if it produces a strange smell or an abnormal noise.Take the appliance to an authorised service centre.
- Switch off the aroma diffuser and unplug it before you move or clean it.
- Do not switch on the aroma diffuser when there is no water in the water tank.
- Do not use any metal or hard objects to clean the oscillator.
- Do not direct the mist output at furniture or electrical appliances.
- Keep the aroma diffuser at normal room temperature and do not use it at very low temperatures(below 0℃).
- Make sure the aroma diffuser and the mains cord are always out of reach of the baby(at least onemetre away).
- Do not use the aroma diffuser in damp places or close to water.
- Do not use the aroma diffuser in places where the humidity level exceeds 50%.
- Do not expose the aroma diffuser to extreme heat or cold or to direct sunlight.
- Do not use the aroma diffuser outdoors.
- The aroma diffuser is only intended for household use.
- Never tilt,move or attempt to empty the aroma diffuser while it is operating.
- Unplug the aroma diffuser after use.
- Never cover the aroma diffuser with a towel or blanket.

Electromagnetic fields(EMF)

This appliance complies with all standards regarding electromagnetic fields(EMF).If handled properly and according to the instructions in this user manual,the appliance is safe to use based on scientific evidence available today.