

JQVV

Dash Cam



User Manual

Model: V309

Catalogue

● Important Safeguards	1
● Important Notice	2
● What You Get In the Box?	3
● Interface and Button Function	4
● Product Use Precautions	5
● Set up and Installation	6-7
● Installation Instructions	8
● Button Function	9
● Operating Mode	10
● Video Recording Mode	11
● Playback Mode	12
● Setup Menu	13
● Function	14-18
● Specification	19
● Common Problem and Solution	20-21
● Customer Service Guarantee	22

Foreword

Thank you for purchasing our dash cam.

1. Please format the Mirco SD card before recording.
2. Had better format the Mirco SD card per week to avoid recording overmuch locked videos. (Avoid Mirco SD card memory is full).
3. Please tear off the film on the surface before use.
4. Please remember to Remove the Lens Film before recording the video.
5. To use parking monitor, please connect Smart HardWire Kit.

If you meet any problems about the dash cam, please contact us as soon as possible.

■ Important Safeguards

1. Please read this manual thoroughly before using it and fully understand it. Please keep this manual properly. We hope that this product can meet your needs and serve you for a long time.
2. Please do not put the product in a humid working environment, the product does not have the waterproof function, please avoid this product being sprayed or exposed to rain.
3. Do not try to open the shell or try to repair it yourself. If this product or any of its accessories is faulty, please go to a professional repair point for repair.
4. Do not use harsh chemicals, cleaning solvents or cleaning agents to clean this product. Please wipe the product with a slightly damp soft cloth.
5. Do not use in an environment with excessive dust density to prevent the lens and other parts from being contaminated with dust, which will affect the imaging effect.
6. Please pay attention to environmental protection and do not discard this product at will. It is forbidden to throw this product in fire to avoid explosion.
7. Pay attention to tear off the protective film on the lens and the protective film on the screen before use.
8. Please pay attention to the cleaning of the lens surface, use a slightly damp soft cloth to clean it before use, so as to avoid the problem of poor camera effect.
9. If the equipment hardware needs to be plugged or unplugged, please operate with the car turned off, otherwise it is easy to cause abnormalities or damage to the equipment.
10. Please avoid high temperature and direct sunlight for outdoor use.
11. The machine is not allowed to be disassembled, hit or thrown into fire.

■ Important Notice

Before using this device, please insert the memory card first, and need to format micro SD card then format the memory card in camera menu.

This camera records video at high resolution, Recommend use high speed Micro SD card, U3 or above is recommended, 16GB cards above are recommended.

Be sure the camera lens is clean and there is nothing blocking the lens.

DO NOT leave the camera in direct sunlight for a long period of time or where the temperature could go above 158°F(70°C).

Make sure you are using the original included power adapter to power the unit.

What You Get In the Box?

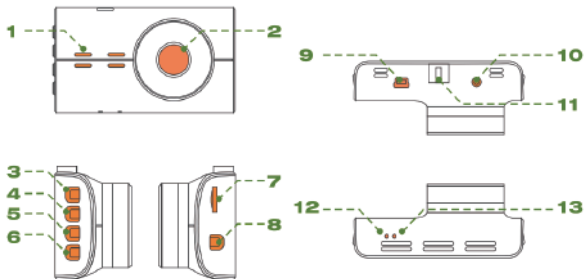
1. 3.0 IPS LCD Dash Camera
2. 1080P Inside Type Rear Camera
3. Suction Cup Bracket
4. Car Charger(With USB Port)
5. Short USB Cable
6. 4 x Cable Clamps
7. 1 x Crowbar
8. GPS
9. User Manual



•Notice:

Mirco SD card is NOT included in the packaging.

Interface and Button Function



1 Speaker

2 Lens

3 Up

4 Menu/Mode

5 Down

6 Power

7 Micro SD Card slot

8 OK Button

9 USB Power-In

10 Rear Camera Connector

11 Mount Bracket

12 Reset

13 Microphone

Product Use Precautions

Please insert the Mirco SD card before recording.

- **NOTE:**

Mirco SD card is NOT included in the packaging.

✓ We recommend U3 speed Mirco SD Card for dash cam .

Install and remove the Mirco SD card:

1. Insert the Mirco SD card into the Mirco SD card slot in the correct direction until the Mirco SD card is fixed in the card slot.
2. When removing the Mirco SD card, please gently press down the Mirco SD card, and then take it out after the Mirco SD card is ejected.

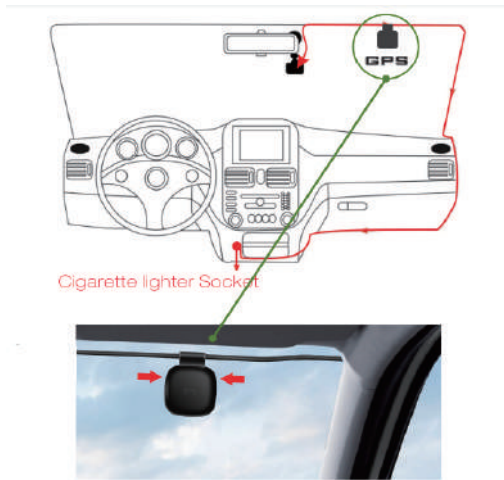
- **NOTE:**

1. Please do not pull or insert the Mirco SD card when the machine is working to avoid damage.
2. When you insert the Mirco SD card into the machine, the machine will set the Mirco SD card as the default storage device, and the original Mirco SD card data may not be readable.
3. If the Mirco SD card is not compatible with the machine, please re-insert it or another Mirco SD card and try again.

Please use the attached USB car charger to charge this machine. If the output voltage is too large or too small, it will cause the machine to not work properly and unpredictable problems.

4. Please use the car charger that comes standard with this machine to power the machine, otherwise it will cause damage to the machine.
5. Install the rear camera on the rear of the vehicle, paying attention to the direction when installing. The wiring can be laid along the roof of the vehicle. After the installation is complete, connect the rear plug to the rear camera interface of the recorder.

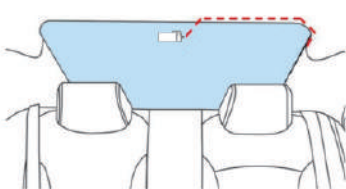
■ Set up and Installation



*** The GPS module should be installed on the top edge of the windscreen, fixed with sticker.**

■ Set up and Installation

1. Use the suction cup mount to install the dash cam on the windshield, recommended place near the rearview mirror facing front, adjust the lens angle for best coverage.
2. Plug the included power adapter (car charger) into the car cigarette lighter socket.
3. Connect the power cable to the camera. For better looking, route the excess cable alongside the interior trim as the diagram shows.
4. While routing the cable, make sure the GPS module is in right place: The module should be installed near the top edge of the windscreen with the sticker applied to the windshield. The stamped side of the module facing the inside of the car, and the sticker should always be facing outside it the car.
5. Connect the rear camera, install it as follow (the picture).



The Installation of the Rear Camera

6. After installation, please start the engine to make sure dash camera works well.

Installation Instructions

1. Turn off the car engine.
2. Insert the Mirco SD card into the recorder card slot.
 - **NOTE:** Please use a high-speed Mirco SD card (above Class 10), the capacity is not less than 16GB, and the Mirco SD card supports up to 256GB.
3. Fix the bracket and install and fix the driving recorder.
4. Insert the car charger into the car cigarette lighter, please use the standard car charger.
5. Connect the USB port of the recorder and the car charger with a charging extension cable.
6. Adjust the position of the lens if it is in a wrong position.
7. Start the engine and check whether the machine is installed correctly.
 - **NOTE:** Please pay attention to check whether the picture on the display is normal, if the picture of the front camera is inverted, Please contact us as soon as possible.

■ Button Function

Key	Function Description
UP	·In Setting Menu. Short press to select option and adjust values. ·In Playback. Short press to select media files. ·In Video mode. Short press to switch front and rear camera view.
MENU/ Mode	·Short press to access the menu settings in video mode, long press to manually lock current video file. ·In standby(not actively recording), long press to switch mode: Video/Photo/Playback .
Down	·In Setting Menu. Short press to select option and adjust values. ·In Playback. Short press to select media files. ·In Video mode. Short press to turn on/off audio recording. · Long press to turn on/off the Wi-Fi
OK	·In Video Mode. Short press to start/stop video recording. Long press the OK Button to open the ACC parking monitor. ·In Photo Mode. Short press to take a photo. ·In Setting Menu. Short press to confirm selection and adjustment. ·In Playback, short press to select and play recorded files. ·In Playback, short press to stop/start playing video.
Power	· Long press to turn off/on the camera. ·Short press to turn off/on the display.

■ Operating Mode

The dash cam operates in 3 modes: Video Recording Mode, Photo Mode and Playback Mode.

Video Recording Mode and Photo Mode also have menu to help you configure.

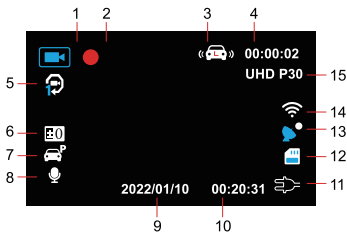
In standby condition(non-recording state), LONG PRESS "MENU/Mode" button to switch between different modes and access the mode you want. Watch the icon on top left corner of the screen for each mode.

Video recording Mode

The camera will automatically enter Video Recording Mode and start recording when connected to a car charger and power on. A Red dot flashing on the top left corner indicates recording is in progress.

Press the "OK" button to stop recording, or start recording again.

Video Recording Mode



- | | | |
|-----------------------|------------------------------------|---------------------|
| 1 Recording Mode | 6 Exposure | 11 Power |
| 2 Recording Indicator | 7 Parking Mode
(OFF by default) | 12 Micro SD Card |
| 3 G-sensor Icon | 8 Audio Recording Icon | 13 GPS |
| 4 Recording Time | 9 Date | 14 Wi-Fi |
| 5 Loop Recording | 10 Time | 15 Video Resolution |

Photo Mode



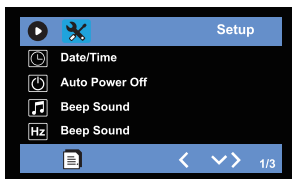
Playback Mode



↓ Press the MENU BUTTON to switch to the following interface



↓ Press the MENU BUTTON again to switch to the setting interface



Setup Menu

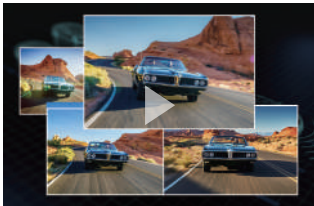
Video Menu Setting	Resolution	Adjust video resolution
	Loop Recording	Adjust Loop Recording video clip length
	Record Audio	Turn ON/OFF audio recording
	G-Sensor	Adjust G-sensor lock sensitivity
	Parking Monitor	To use parking monitor, please connect Smart HardWire kit
	Date Stamp	Setting the date
	WDR	The WDR (Wide Dynamic Range) technology on this camera allows it to adapt to the recordings from the surroundings. When over or underlit the camera adjusts the quality to ensure a constant great quality video
	Exposure	Setting the value
	Car Number	Set up your car license plate number, and watermarked in video
	WIFI	Share the video and set the parameter value on the downloaded APP
Setup	Screen Saver	Setup the screen saver activated time
	Frequency	Setup local power frequency
	Beep Sound	Turn ON/OFF operation prompt
	Language	Setup the system menu language
	Date/Time	Setup local date and time
	Format	Format SD Card
	Version	Check software version
	Auto Power Off	In standby mode (not actively recording or playback video), the machine will automatically turn off after a period of no operation

Function

1. Loop Recording

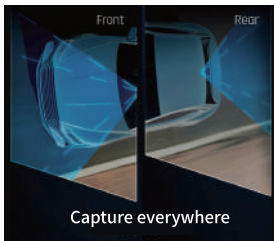
Dash cam can loop record the video automatically .

Please set loop recording as 1 minute/2 minutes/3minutes instead of setting"OFF".



2. Wide Dynamic Range

WDR technology on this camera allows it to adapt to the recordings from the surroundings. When over- or underlit the camera adjusts the quality to ensure a constant great quality video.



3. Dual Dash Cam

Front camera supports(4k/2.5k/1080p)resolution.

Rear camera supports 1080p resolution.

4. Gravity Sensing

When the car collides, record it and save it as video urgently and do not delete it. It helps offer you the irrefutable evidence.

The locked videos won't delete automatically.

Had better clear the Mirco SD card per week to avoid that memory is full.



5. Super Night Vision

There is no doubt that the dash cam with 4k front camera can freely record at night.

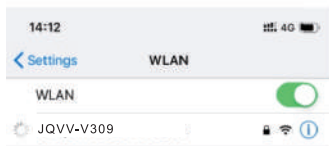
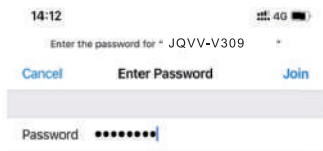


6. Automatic On / Off

Support the connection of vehicle power supply, the car starts the video. When we stops the engine, the video automatically saves the video and turns off.

7. Wi-Fi Function

- (1). Search 'DashGo' on Apple store or Google play, then download and install this software on your phone.
- (2). Open 'WLAN' of the phone and camera simultaneously. (Long press 'Down' key to open Wi-Fi of camera or turn on Wi-Fi option in the menu after turning on camera)
- (3). Select the corresponding Wi-Fi name of the camera is: **JQVV-V309** then enter the password, default password is: **12345678**



(4). After connecting successfully, back to APP to view real-time view, take video/photo, video/photo playback etc. It also offers us the opportunity to share the video and set the parameter value on the downloaded APP.

Click the Online button -----



The Interface of "DashGo"

(5). Click the setting button to change your customized settings.

8. GPS Function

The device is equipped with GPS positioning module for synchronously recording the complete driving track information by the user, the GPS info will be shown in the video playback, such as speed, latitude and longitude. User can view the footage and all GPS information in the PC GPS viewer, named "DashGo".

The GPS playback needs customized player "DashGo", for PC OPERATING SYSTEM system only. Please contact customer service support "DashGo" download.)

9. Parking Monitor(Optional)

Parking monitor is OFF by default.

With optional Smart Hardwire kit connected, the Parking Monitor is enabled, the dash camera will stay standby after the engine is turned off. When camera detects shaking, it will automatically turn on and take a short video , then return to standby automatically.

(To use parking monitor, Must connect Smart HardWire kit.)

The details of ACC parking monitor

Notice: Pay attention to the following content before car shuts down and the machine is connected to the Smart HardWire Kit.(Before you get out of the car)

1. Long Press the OK button to enter the ACC parking monitor mode, the parking monitoring icon will be displayed on the main recording interface **(when the parking monitor is not in progress, this icon is to be off)**, the machine will enter the standby mode without recording, the screen saver would release 10 seconds later. The recording time of each video is 1 minute. The videos will be saved in the playback folder.
2. The way to trigger parking monitoring is G-sensor, motion detection triggers, and the machine records after triggering **.(the screen does not light up at this time)**
3. (Before you start your car)Short press any key to exit the parking monitoring mode and enter the normal recording mode"



ATTENTION!

The dash cam would delete the video (which is unlock) if the Mirco SD card is full.

Specification

Model:	V309
Screen Display:	3 inch LCD Screen
Lens:	170°Wide Angle Lens
Video Resolution:	Front:3840*2160P Rear:1920*1080P
Video Format:	MP4
Video Coding:	High compression H.264
Video Mode:	Loop Recording
Picture Format:	JPG
Loop Recording:	Built-in
Parking Monitor:	To use parking monitor, please connect Smart HardWire kit
G-Sensor Lock:	Built-in
Storage:	Micro SD Card Up to 256GB
Operating Temperature:	-20°C~60°C(-4°F~140°F)
Storage Temperature:	-30°C~70°C(-22°F~158°F)
Operation Humidity:	15~85%RH
Power Supply:	DC 5V/3A

Notice:

Daylight Saving time means that the time is artificially set in order to save energy. It defaults by on. The time is one hour earlier than the normal time.

Common Problem and Solution

Q: Recorder shows memory full, unable to loop video, etc.

A: 1. First,when a new memory card is used for the first time on the machine,please format the memory card. Second, if the memory card is previously used on another type of device,it needs to be formatted when used on this camera.Third, change another new Micro SD Card.

2. Check the sensitivity of G-sensor, If the sensitivity is too high,the bumping and shaking of the camera will trigger the G-sensor,and the file will be locked.Locked files cannot be overwritten.If the lock file is accumulated,there will be no memory card to loop record.When parking monitoring is turned on, shaking will also cause too many stray files, which will also affect the reading and writing of cards.

3. Check the setting of Loop recording. If the loop recording is set to OFF, the machine will not loop. When the card is full, the machine will not delete the files automatically.

Please set loop recording as 1 minute/2 minutes/3minutes instead.

Q: The device will automatically turn on or turn off.

A: 1.Please format the memory card in the camera.

2. Please check whether the parking guard function is on.With parking monitor on, the device will automatically turn on and record when it detects a collision or shaking.

3. Check the car charger connection status, if the connection is loose, the power supply is not stable, the camera will automatically turn on and off.

Common Problem and Solution

Q: The rear camera does not display image.

A: 1. Please switch the camera display mode to double check the rear camera status.

2. Please check if the AV plug is properly connected and the cable is plugged in correctly.

3. Try to disconnect the camera and clean the connector with some Medical alcohol and connect it again.

Q: Screen operation or button reaction is slow during recording.

A: 1. Please check whether the memory card used is a high-speed card (U3), If you use a non-high-speed card, problems such as missed seconds, video playback jams, screen display Colorful stripes, and crashes may occur.

2. Reset the camera if necessary.

Q: Even though set the screen saver, but the screen will randomly come back on.

A: The power supply might not be stable, please change another car charger to try.

Customer Service Guarantee

We offer a 24-month warranty from the date of purchase. If you have any further problems or need any further help, please contact us as soon as possible.

✉ service@jqvvttec.com

☎ 1888 965 5888

FCC Caution:

This device complies with part 15 of the FCC Rules. Operation is subject to the following two conditions: (1) this device may not cause harmful interference, and (2) this device must accept any interference received, including interference that may cause undesired operation.

Any changes or modifications not expressly approved by the party responsible for compliance could void the user's authority to operate the equipment.

NOTE: This equipment has been tested and found to comply with the limits for a Class B digital device, pursuant to Part 15 of the FCC Rules. These limits are designed to provide reasonable protection against harmful interference in a residential installation. This equipment generates, uses and can radiate radio frequency energy and, if not installed and used in accordance with the instructions, may cause harmful interference to radio communications. However, there is no guarantee that interference will not occur in a particular installation.

If this equipment does cause harmful interference to radio or television reception, which can be determined by turning the equipment off and on, the user is encouraged to try to correct the interference by one or more of the following measures:

- Reorient or relocate the receiving antenna.
- Increase the separation between the equipment and receiver.
- Connect the equipment into an outlet on a circuit different from that to which the receiver is connected.
- Consult the dealer or an experienced radio/TV technician for help.

To maintain compliance with FCC's RF Exposure guidelines, This equipment should be installed and operated with minimum distance between 20cm the radiator your body: Use only the supplied antenna.

FCC ID: 2A13L-V309