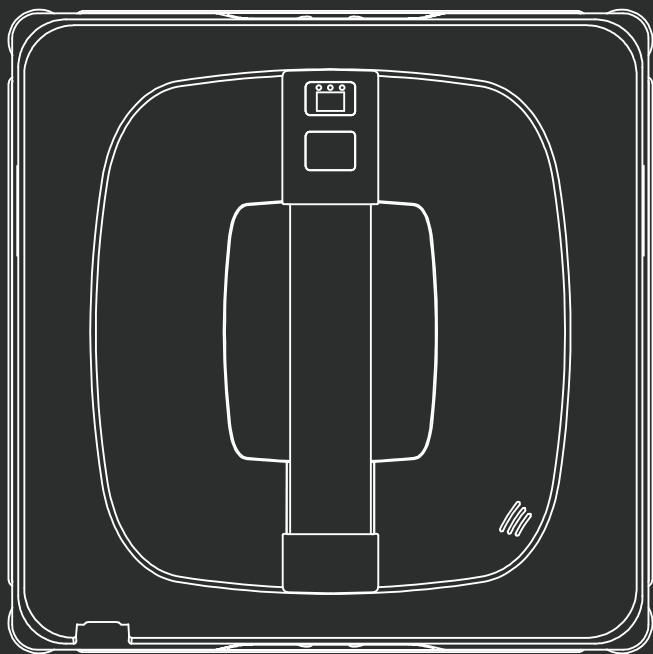


WA9 PRO

Robotic window cleaner
With 4 sprayers

User Manual



Welcome

Thank you for using the 4-Sprayers Robotic Window Cleaner WA9 Pro

Please read this manual in detail before use to ensure your personal safety and the effective working of the product.

- | | |
|--|---|
| <input type="checkbox"/> 简体中文 (sc) | <input type="checkbox"/> hrvatski (hr) |
| <input type="checkbox"/> 繁體中文 (tc) | <input type="checkbox"/> italiano (it) |
| <input checked="" type="checkbox"/> English (en) | <input type="checkbox"/> lietuvių (lt) |
| <input type="checkbox"/> 日本語 (jp) | <input type="checkbox"/> latviešu (lv) |
| <input type="checkbox"/> 한국어 (kr) | <input type="checkbox"/> magyar (hu) |
| <input type="checkbox"/> български (bg) | <input type="checkbox"/> Malti (mt) |
| <input type="checkbox"/> español (es) | <input type="checkbox"/> Nederlands (nl) |
| <input type="checkbox"/> čeština (cs) | <input type="checkbox"/> polski (pl) |
| <input type="checkbox"/> dansk (da) | <input type="checkbox"/> português (pt) |
| <input type="checkbox"/> Deutsch (de) | <input type="checkbox"/> română (ro) |
| <input type="checkbox"/> eesti (et) | <input type="checkbox"/> slovenčina (sk) |
| <input type="checkbox"/> ελληνικά (el) | <input type="checkbox"/> slovenščina (sl) |
| <input type="checkbox"/> français (fr) | <input type="checkbox"/> suomi (fi) |
| <input type="checkbox"/> Gaeilge (ga) | <input type="checkbox"/> svenska (sv) |

Menu

Product	5
List of accessories	6
Installation Instructions	7
Instructions for use and precautions	9
Working Paths Introduction	10
Indicator lights and fault descriptions	12
Remote Control Description	13
Care and Maintenance	14
Parameters	15
Security matters	16
Bluetooth connectivity (optional)	17

Product

Power/Start button

Long press for 3 seconds to switch on/off
Short press to start/continue/pause

sound outlet

Front Indicators:

White light: Power indicator
Blue light blinks: water spray on
Blue light is on: water spray off
Red light: Error
(Refer to Fault Alarm Description)
Yellow light: Charging
Green light: Charging finished

Power cord and safety rope

Sprayers(2pcs x 2 sides)

Air pressure monitor

Bottom Indicators

(same function as front part)

Upgrade Interface

Crawler belt

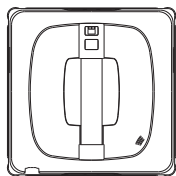
cleaning cloth

Water inlet

Drop Sensor

Bottom

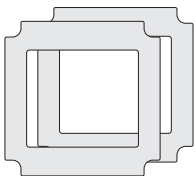
List of accessories



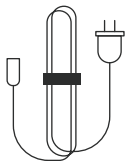
Window Cleaning robot
x1



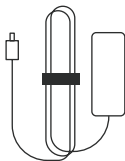
Remote controls
x1



Cleaning mop
x2



AC power cable
x1



Adapter
x1



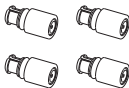
User manual
x1



Quick Guide
x1



Water Bottle
x1



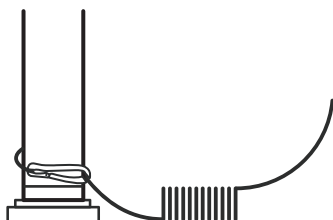
Nozzle
x4



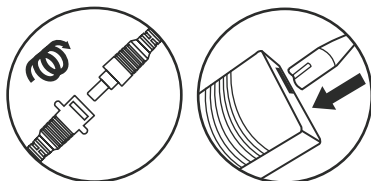
Nozzle Cleaner
x1

Installation Instructions

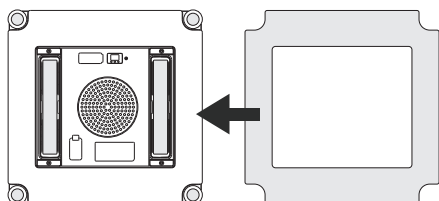
1. Hook the safety rope to a strong and reliable object.



2. Connect the extension cord of the robot and the output cord of adapter, then tighten it. Connect the AC power cable and the adapter, then plug it to the power supply.

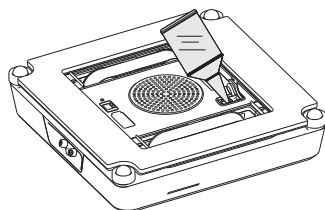


3. Fit the white side of mop to the bottom of the robot and keep it flat to avoid air leaks.



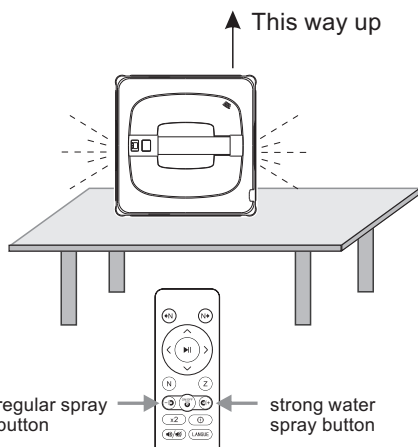
4. Open the water filler plug and fill in appropriate amount of water with the equipped bottle, then cover the water filler plug.

The robot may alarm "insufficient water", if fill in the purified water or distilled water.



- !** Be sure to use the original mop, otherwise the performance of the robot will be affected

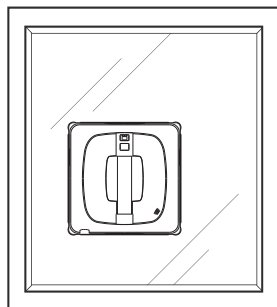
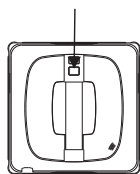
5. In order to make the robot spray better when working on the glass, better vent the air from the internal water tube in advance:
 - Connect the adapter but without turning on the Robot, put it vertically (as seen in the picture).
 - Keep pressing (regular spray button) of the remote control without losing it, until the water spray out from 2 left sprayers.
 - Keep pressing (strong water spray button) of the remote control without losing it, until the water spray out from 2 right sprayers.



6. Put the robot on the glass

- Long press (power/start button) to turn on the robot.
- When there is the sound of fan motor, attach the robot to the center of the glass (avoid putting it too close to the window frame).
- make sure that the robot is attached to the glass firmly, and then release your hand.

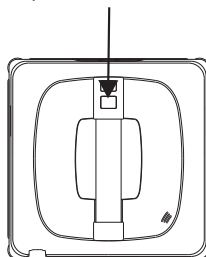
Long press
(power/start button)
to turn on the robot



7. Take off the robot

- Short press (power/start button), the robot starts to work. It stops automatically after cleaning the glass.
- Hold the safety rope with one hand, and long press (power/start button) by the other hand until the sound of the fan becomes smaller, then you can remove the robot.

power/start button



Instructions for use and precautions

Safety rope

Check whether the safety rope is broken or not, and then fix the safety rope and check whether it is firmly stuck on the reliable object.

Work environment check

Ensure the glass is dry, do not use it in rainy days or when the glass is wet and foggy.

- ⚠ Do not use on broken, cracked glass surfaces
- ⚠ If external overhead work is required, ground safety warnings must be set up downstairs to prevent accidental personal injury

Clean

Use a dry, clean cleaning cloth.

- ⚠ Note that the rags should not be too wet. It is recommended that the cleaned rags be dried before continuing to use them, or replaced with new dry rags for use with the robot.

Start

- ① Make sure the power cord, plug is connected.
- ② Long press (power/start button) to turn on the robot and wait for the fan to rotate and then attach the robot to the center of the window. (Avoid getting too close to the window frame)
- ③ Make sure the robot is attached to the glass before releasing your hand.
- ④ A short press (power/start button) starts the robot.

How to remove the robot

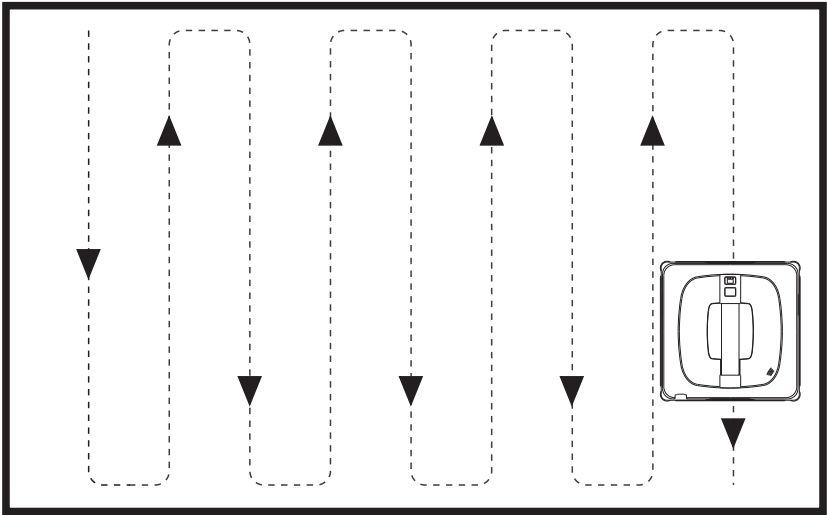
- ① While the robot is running, hold the safety rope with one hand and press the (power/start button) long enough until the sound of the blower diminishes before removing the robot.
- ② If you cannot reach the robot with your hands, use the safety cord to pull the robot back slowly, pulling from the side of the robot as close to the glass as possible to prevent the robot from being yanked off.

Power failure protection

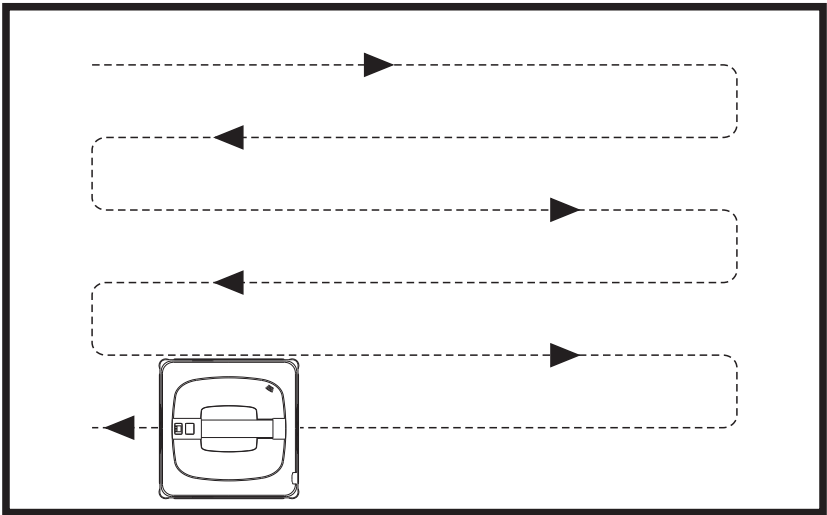
In the event of an accidental power failure, the robot will use the internal supply battery to keep the robot adsorbed and immobile for about 20 minutes with warning sounds and lights, please remove the robot or connect the power cord as soon as possible.

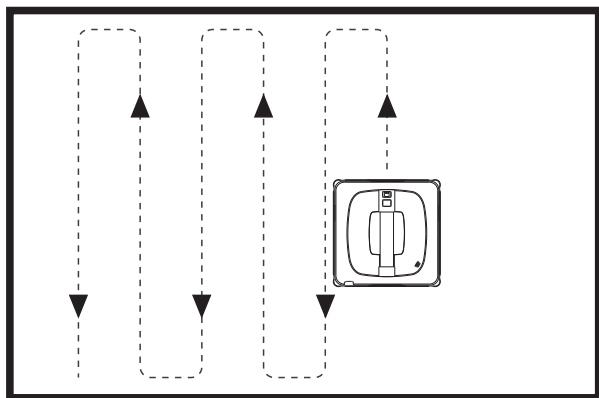
Working Paths Introduction

Route of N-shape cleaning mode

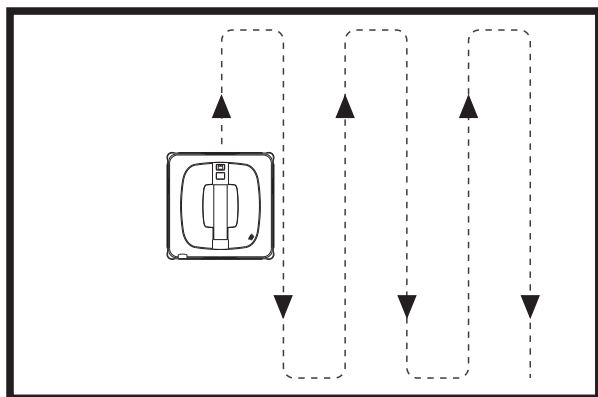


Route of Z-shape cleaning mode

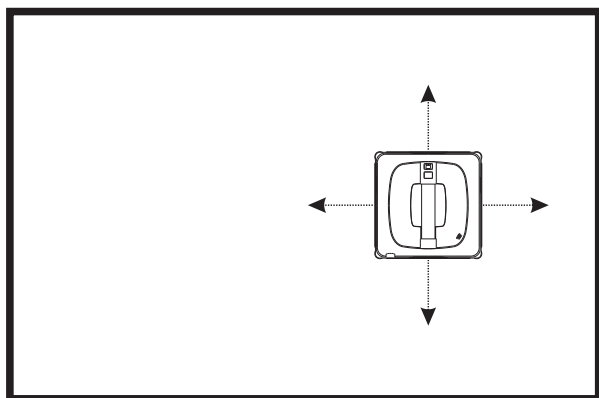




Route of
Left area cleaning
mode (in N-shape)



Route of
Right area cleaning
mode (in N-shape)



Route of
Spot cleaning mode

Indicator lights and fault descriptions

Indicators Description

Once the robot is connected to the power supply, it starts a self-test process. The red, blue and white indicators light 1 second before go out, buzzer beeps 1 second and then stop.

Left light-yellow or green (charging indicator)	Middle light-White (power indicator)	Right Light-red or blue (about water spray and abnormality)
<p>**While Charging: Yellow light is always on and green light is off.</p> <p>**When charging is completed: Green light is always on and yellow light is off</p>	<p>**Always on if the robot is turned on.</p> <p>**Go out if the robot is turned off.</p>	<p>**If the robot is working with water spray function turned on, the blue light blinks and red light is off.</p> <p>** If the robot is working with water spray function turned off, the blue light is always on and red light is off.</p> <p>**If there is any abnormality, the red light blinks.</p> <p>**The right light goes out when the robot is turned off.</p>

Fault Alarm Description

Defective factor	Indications
Barometer sensor abnormality	Red light flashes 4 times, buzzer beeps 4 times.
Gyroscope sensor abnormality	Red light blinks 5 times, buzzer beeps 5 times.
Switch Microcontroller abnormality	Red light flashes 8 times, buzzer beeps 8 times.
Photoelectric switch abnormality	When the robot is moving, the blue light goes out continuously and the protection is carried out after 2 seconds. Then blue light is always on, and red light is flashing
movement abnormality	Red and blue alternately flashing, as well as buzzer long sounding

Remote Control Description



Left area cleaning
in N-shape



Z-shape cleaning



Right area cleaning
in N-shape



water spray On/off



Start/Continue
/Pause



Strong spray



Up to the end of
the glass



Regular spray



Down to the end
of the glass



Deep cleaning (Z+N)



Left to the end of
the glass



Spot cleaning



Right to the end
of the glass



Voice On/Off



N-shape cleaning



Language switching

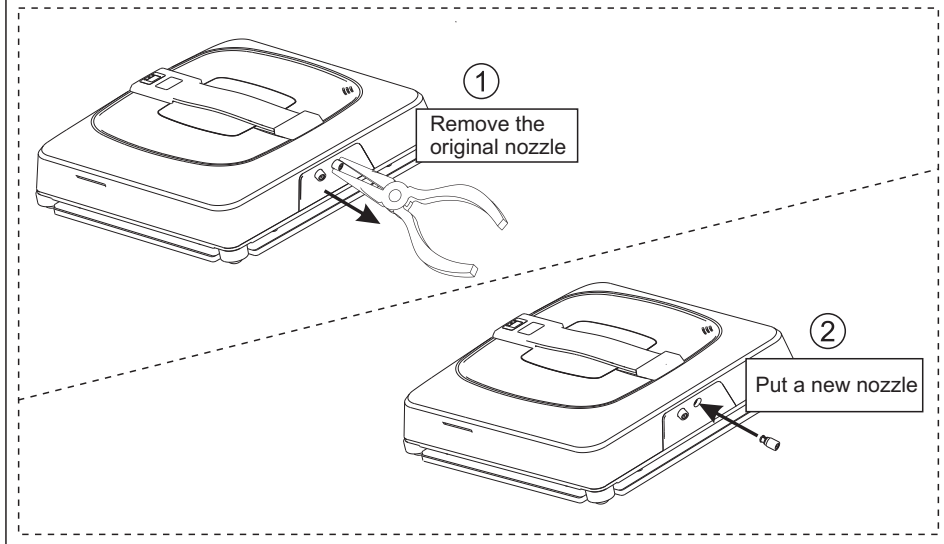
When the robot is standby, long press this key about 3 seconds to enter language setting.

Press the up button "▲" or down button "▼" to find the target language, Then press the "▶||" button to determine the Language.
(Ps: if there is no operation within 10 seconds, it quits language setting automatically)

Care and Maintenance

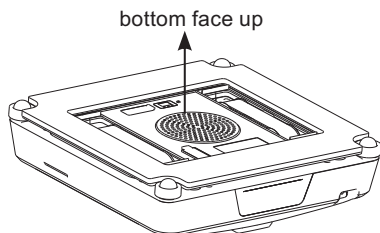
Nozzle Replacement

When the robot is used for some time and the nozzle is found to be clogged, please remove the original nozzle with sharp-nosed pliers and replace it with a new one.

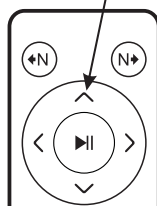


How to clean the crawler belt

1. Connect to the power, and place the robot with the bottom facing up.
2. Press the remote's "▲" button, the robot's belt will rotate slowly.
3. Use a moist paper towel to wipe off the dirt on the tracks.
4. After cleaning, press the "▲" button on the remote control again to exit this process.



Press the remote's "UP" button



Parameters

Model	WA9 Pro
Rated Voltage	24 V
Rated Power	72 W
Battery Capacity	500 mAh
Charging Current	230 mA
Net Weight	1.4 kg
Cleaning Speed	N-shape: 2.85 Min/square Z-shape: 2.96 Min/square Z+N-shape: 2.86 Min/square
Water tank capacity	60 mL
Minimum working area	400*600 mm
suction power	2400-2600 Pa
Robot Size	229*229*65 mm
Battery working time When power failure	20-30 mins (when the battery is fully charged)

Security matters



Requirements for use:

- ① Be sure to check whether the safety rope is broken or not, and install the safety rope before use, set up a warning on the ground if use it clean the outside glass of high rise.
- ② This product should not be drenched with water.
- ③ Do not use on cracked and broken glass.
- ④ Be sure to turn off the robot when cleaning the outside surface of the robot to avoid danger during the movement of the robot.
- ⑤ Keep your fingers and any body parts away from the rotation and opening of the product.
- ⑥ Please follow the instructions to use this product, faults can not be solved, please contact customer service, do not repair to avoid danger.
- ⑦ For home environment cleaning only.

Battery & Charging:

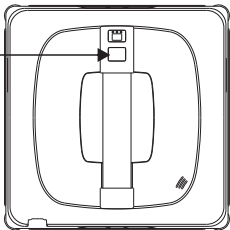
- ① Please do not use third party chargers or disassemble and modify the main unit, battery and charger privately.
- ② charger is broken or cracked, please do not continue to use, please contact customer service.
- ③ Place the charger away from heat sources.
- ④ If the product is to be transported, it is recommended that it be transported in its original packaging and that the robot be turned off.
- ⑤ If you don't use this product for a long time, please fully charge it and turn off the robot and put it in a cool and dry place, and charge it at least once every 3 months to avoid over-discharge of the battery which will lead to the failure of the battery.

Bluetooth connectivity (optional)

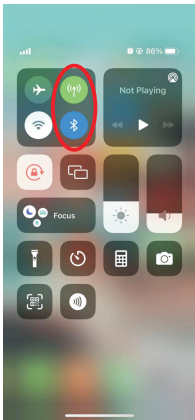
1. Bluetooth reset:

Connect the adapter, wait for the voice to finish broadcasting, short press the body button 3 times, the buzzer short beeps 3 times, and the voice broadcasts reset the distribution network, that is, the reset is successful.

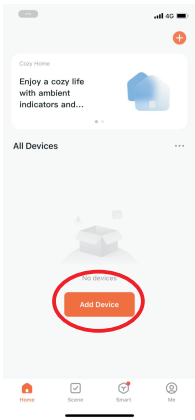
Short press 3 times



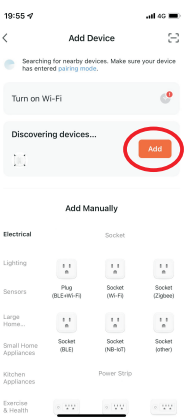
2. Turn on the cell phone network and Bluetooth



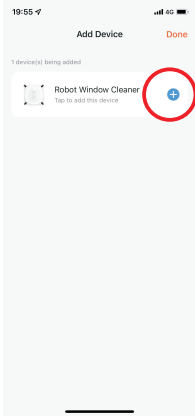
3. Download the DoodleSmart app. Register and Login



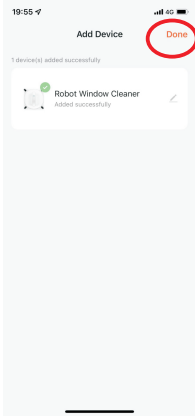
4. Adding equipment



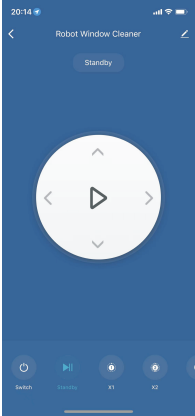
5. Press +



6. Tap Done



7. Use the interface



FCC Caution:

This device complies with part 15 of the FCC Rules. Operation is subject to the following two conditions: (1) This device may not cause harmful interference, and (2) this device must accept any interference received, including interference that may cause undesired operation.

Any Changes or modifications not expressly approved by the party responsible for compliance could void the user's authority to operate the equipment.

Note: This equipment has been tested and found to comply with the limits for a Class B digital device, pursuant to part 15 of the FCC Rules. These limits are designed to provide reasonable protection against harmful interference in a residential installation. This equipment generates uses and can radiate radio frequency energy and, if not installed and used in accordance with the instructions, may cause harmful interference to radio communications. However, there is no guarantee that interference will not occur in a particular installation. If this equipment does cause harmful interference to radio or television reception, which can be determined by turning the equipment off and on, the user is encouraged to try to correct the interference by one or more of the following measures:

- Reorient or relocate the receiving antenna.
- Increase the separation between the equipment and receiver.
- Connect the equipment into an outlet on a circuit different from that to which the receiver is connected.
- Consult the dealer or an experienced radio/TV technician for help.

The window cleaning robot (FCC ID:2AI2S-WA9PRO) and remote control (FCC ID:2AI2S-WA9PRORC) has been evaluated to meet general RF exposure requirement. The remote control (FCC ID:2AI2S-WA9PRORC) can be used in portable exposure condition without restriction.