

unGlue User Manual

Product Overview

unGlue solves parent's number one problem - controlling how much time our children spend on the many electronic devices they have at home and on the go. unGlue provides visibility into where children go, blocks access to restricted websites, and alerts parents when they access alarming websites.

Package Contents:

- 1 x unglue device
- 1 x USB adapter

Features

Set rules - Set smart time limits to control your kid's entertainment time

Any Device Anywhere - Control ALL devices regardless of type or your kid's location

Track Activity - Have visibility into your kid's online destinations

How to Set Up unGlue

Step 1 - Plug the ethernet cable into your home router

Step 2 - Download the unglue app

Step 3 - Follow the set up instructions on the app. The app should detect the unglue device in your network

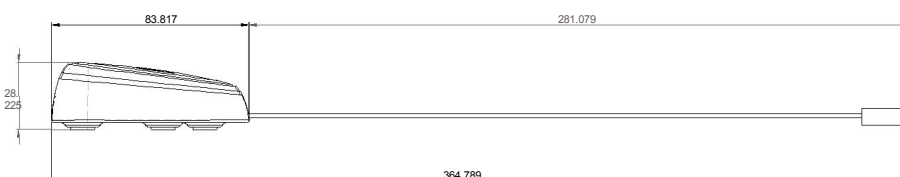
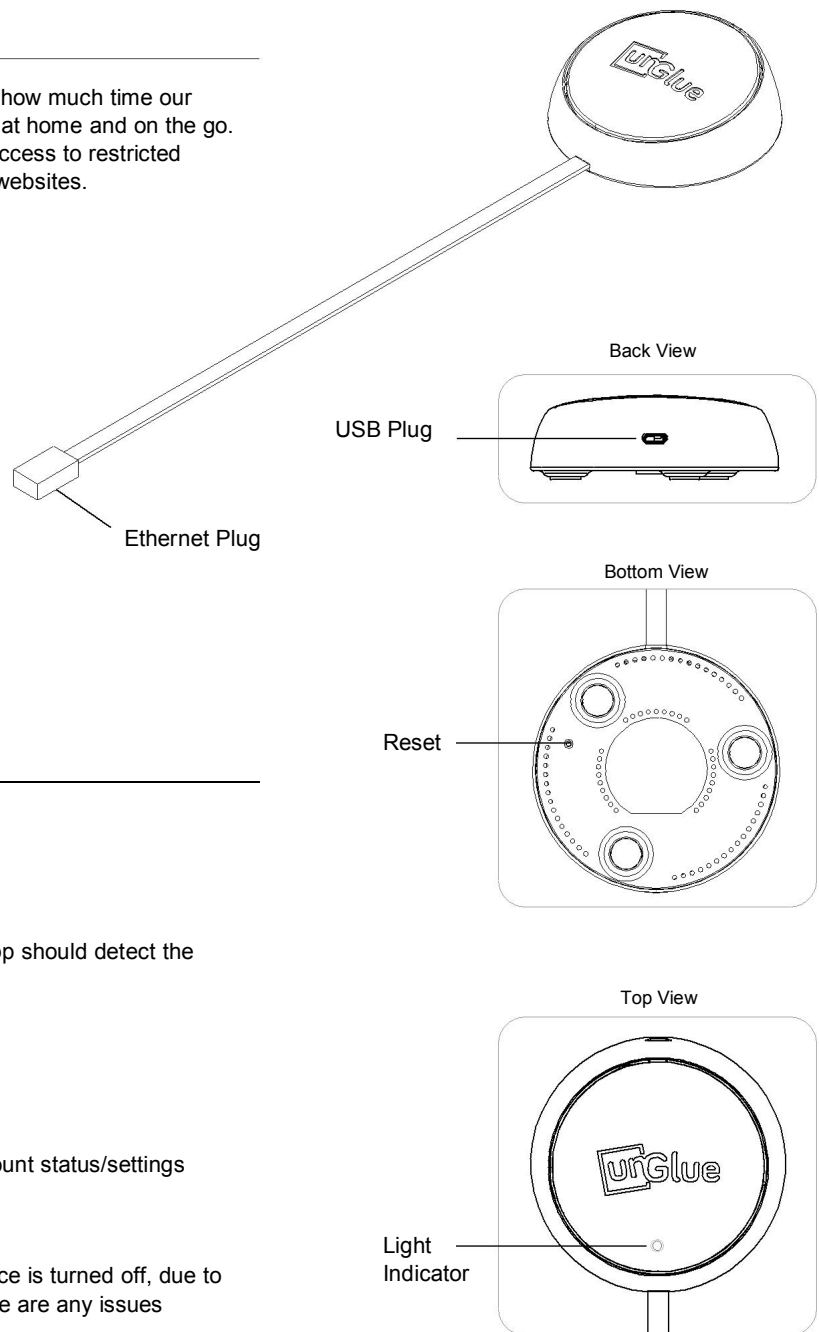
Device indicators

Blinking Rapidly - The device is booting up

Solid White Light - Bootup is complete and checking account status/settings

Slow blinking - Account is not set up or detected

No Light - There are no issues with the device. If the device is turned off, due to unplugging or power outage, the app will notify you if there are any issues



Warning

Do not get wet or expose to moisture. Keep out of reach from children.

FCC Statement:

This equipment has been tested and found to comply with the limits for a Class B digital device, pursuant to part 15 of the FCC Rules. These limits are designed to provide reasonable protection against harmful interference when the equipment is operated in a commercial environment. This equipment generates, uses, and can radiate radio frequency energy and, if not installed and used in accordance with the instruction manual, may cause harmful interference to radio communications.

Operation of this equipment in a residential area is likely to cause harmful interference in which case the user will be required to correct the interference at his own expense.

This device complies with Part 15 of the FCC Rules. Operation is subject to the following two conditions: (1) this device may not cause harmful interference, and (2) this device must accept any interference received; including interference that may cause undesired operation.

Note: Modifications to this product will void the user's authority to operate this equipment.