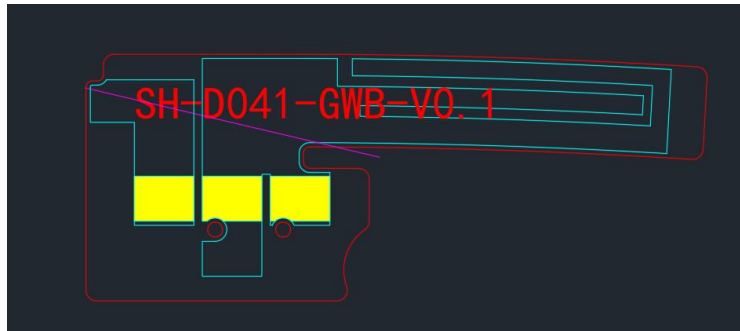


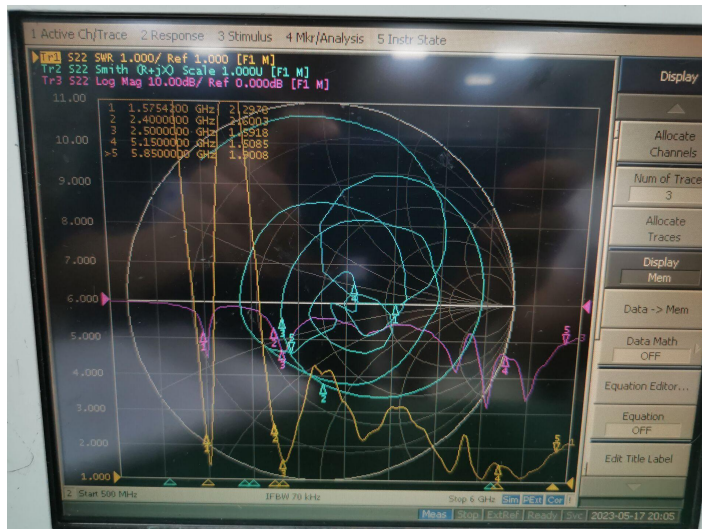


- Antenna information

Customer	CUBOT
Antenna Model	FPC
Antenna Type	PIPA



Return loss



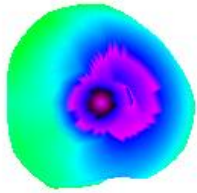


Shenzhen 3Good Wireless Communication Co., Ltd
 Room501, Jinfulai Building, No.49-1, Dabao Road, Baoan
 District, Shenzhen

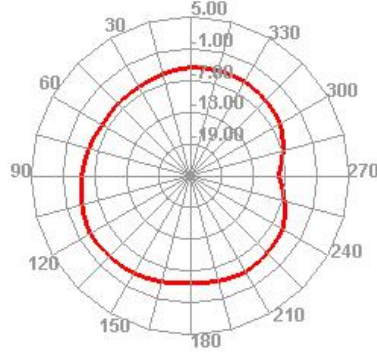
2.4G Antenna waveform

2.4WIFI/BT

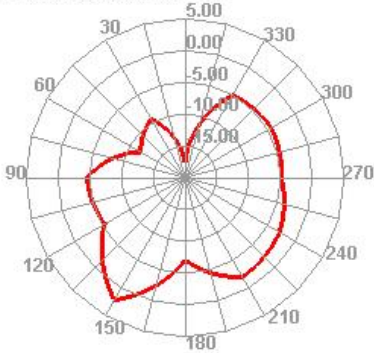
2450.000MHz



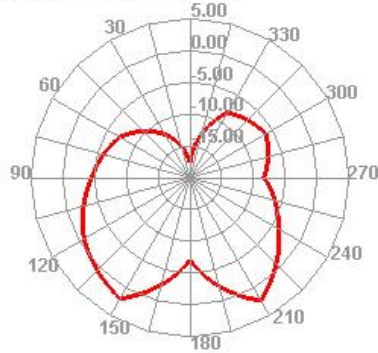
2450.000MHz H



2450.000MHz E1



2450.000MHz E2

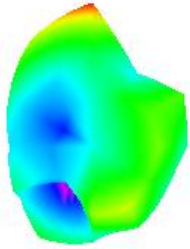


Passive Test For WIFI2.4												
Freq (MHz)	Effi (%)	Effi (dB)	Gain (dBi)	Gain (dBd)	UHS (%)	DHS (%)	Max (dB)	Min (dB)	irectivity (dBi)	Beamwidth (3dB)	AttH (dB)	AttV (dB)
2400	40.01	-3.98	1.61	-0.54	10.067	29.943	1.61	-17.08	5.58	0	48.37	48.44
2410	40.74	-3.9	1.75	-0.4	10.532	30.205	1.75	-17.93	5.65	0	48.35	48.52
2420	42.67	-3.7	1.97	-0.18	11.318	31.351	1.97	-17.72	5.66	0	48.43	48.64
2430	44.04	-3.56	2.12	-0.03	11.734	32.304	2.12	-18.21	5.68	0	48.59	48.6
2440	44.31	-3.54	2.28	0.13	11.801	32.506	2.28	-18.35	5.81	0	48.71	48.8
2450	46.05	-3.37	2.52	0.37	12.294	33.761	2.52	-17.72	5.89	0	48.88	48.88
2460	46.33	-3.34	2.49	0.34	12.569	33.763	2.49	-16.35	5.83	0	48.77	48.73
2470	45.58	-3.41	2.32	0.17	12.664	32.92	2.32	-15.23	5.74	0	48.64	48.56
2480	46.61	-3.31	2.37	0.22	13.142	33.472	2.37	-14.42	5.69	0	48.56	48.58
2490	49.42	-3.06	2.59	0.44	13.934	35.483	2.59	-14.62	5.65	0	48.81	48.89
2500	48.11	-3.18	2.63	0.48	13.464	34.642	2.63	-15.08	5.8	0	48.72	48.74

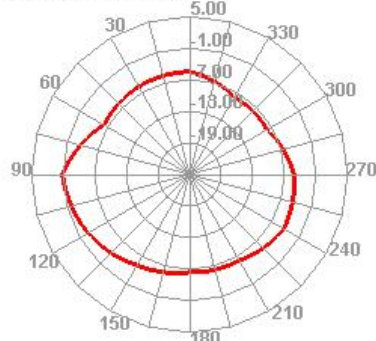


5G Antenna waveform

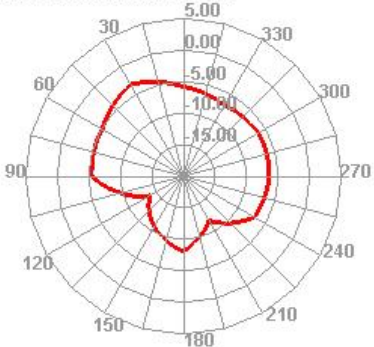
5.8G WIFI
5500.000MHz



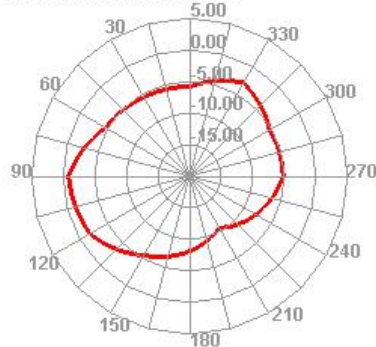
5500.000MHz H



5500.000MHz E1



5500.000MHz E2



Passive Test For WiFi 5.8													
1	2	3	4	5	6	7	8	9	10	11	12	13	14
Freq (MHz)	Effi (%)	Effi (dB)	Gain (dBi)	Gain (dBi)	UHS (%)	DHS (%)	Max (dB)	Min (dB)	irectivity (dBi)	Beamwidth (3dB)	AttH (dB)	AttV (dB)	
5150	31.22	-5.06	1.74	-0.41	18.561	12.664	1.74	-20.76	6.79	120	57.95	57.76	
5160	30.15	-5.21	1.58	-0.57	17.822	12.33	1.58	-19.58	6.78	120	57.77	57.78	
5170	29.07	-5.37	1.24	-0.91	17.039	12.032	1.24	-18.66	6.61	30	57.75	57.44	
5180	28.45	-5.46	1.33	-0.82	16.602	11.849	1.33	-18.53	6.78	120	57.39	57.37	
5190	27.78	-5.56	1.17	-0.98	16.115	11.668	1.17	-18.27	6.73	120	57.3	57.28	
5200	27.22	-5.65	0.93	-1.22	15.702	11.515	0.93	-17.6	6.58	120	57.54	57.27	
5210	27.81	-5.56	0.96	-1.19	15.972	11.842	0.96	-17.97	6.52	120	57.66	57.27	
5220	27.18	-5.66	0.88	-1.27	15.524	11.66	0.88	-16.4	6.53	120	57.52	57.42	
5230	27.97	-5.53	0.83	-1.32	15.956	12.01	0.83	-15.88	6.36	120	57.6	57.52	
5240	27.22	-5.65	0.6	-1.55	15.58	11.643	0.6	-15.56	6.25	150	57.55	57.56	
5250	26.08	-5.84	0.27	-1.88	14.925	11.155	0.27	-16.19	6.11	150	57.08	56.91	
5260	26.5	-5.77	0.14	-2.01	15.131	11.373	0.14	-16.63	5.91	60	57.29	57.07	
5270	26.26	-5.81	0.04	-2.11	15.077	11.178	0.04	-17.06	5.85	60	56.91	56.73	
5280	26.37	-5.79	-0.19	-2.34	15.191	11.175	-0.19	-16.96	5.6	60	57.27	57.19	
5290	27.44	-5.62	-0.02	-2.17	15.874	11.57	-0.02	-16.8	5.99	60	57.12	57.1	
5300	25.93	-5.86	-0.38	-2.53	15.059	10.868	-0.38	-18.26	5.48	60	57.35	57.24	
5310	26.1	-5.83	-0.54	-2.69	15.197	10.899	-0.54	-18.63	5.3	60	57.08	57.28	
5320	27.3	-5.64	-0.56	-2.71	15.928	11.374	-0.56	-17.06	5.08	60	57.81	57.14	
5330	26.93	-5.7	-0.64	-2.79	15.694	11.24	-0.64	-16.82	5.06	60	57.32	57.3	
5340	28.42	-5.46	-0.63	-2.78	16.304	12.112	-0.63	-16.72	4.84	60	57.51	57.49	
5350	29.56	-5.29	-0.39	-2.54	16.977	12.587	-0.39	-16.78	4.9	60	57.4	57.83	
5360	28.55	-5.44	-0.53	-2.68	16.405	12.147	-0.53	-17.29	4.91	30	57.49	57.26	
5370	28.49	-5.45	-0.55	-2.7	16.402	12.084	-0.55	-17.1	4.9	30	57.3	57.49	
5380	28.71	-5.42	-0.57	-2.72	16.461	12.252	-0.57	-17.82	4.84	30	57.55	57.29	
5390	27.16	-5.66	-0.78	-2.93	15.583	11.579	-0.78	-18.04	4.88	30	57.12	57.24	
5400	32.17	-4.93	-0.21	-2.36	18.542	13.827	-0.21	-16.59	4.71	30	58.12	58.12	
5410	31.76	-4.98	-0.17	-2.32	18.208	13.552	-0.17	-16.46	4.81	30	58.04	58.63	
5420	31.13	-5.07	-0.21	-2.36	17.859	13.268	-0.21	-15.72	4.86	30	58.33	58.15	
5430	30.46	-5.16	-0.3	-2.45	17.41	13.054	-0.3	-15.53	4.87	30	57.96	58.25	
5440	30.08	-5.22	-0.27	-2.42	17.217	12.863	-0.27	-15.23	4.95	30	58.04	57.99	
5450	29.83	-5.25	-0.33	-2.48	17.022	12.805	-0.33	-14.46	4.92	60	57.87	58.29	
5460	29.7	-5.27	-0.32	-2.47	16.91	12.785	-0.32	-14.38	4.96	60	58	58.24	
5470	28.81	-5.4	-0.42	-2.57	16.56	12.252	-0.42	-14.33	4.99	90	58.1	58.42	
5480	27.93	-5.54	-0.62	-2.77	16.048	11.88	-0.62	-14.43	4.92	90	58.54	58.76	
5490	27.02	-5.68	-0.68	-2.83	15.468	11.549	-0.68	-13.92	5	90	58.28	58.46	
5500	26.17	-5.82	-0.87	-3.02	14.969	11.2	-0.87	-13.88	4.96	90	58.74	58.88	
5510	26.23	-5.81	-0.79	-2.94	14.961	11.265	-0.79	-13.62	5.02	90	58.67	59.02	
5520	26.05	-5.84	-0.76	-2.91	14.94	11.113	-0.76	-13.72	5.08	90	59.28	59.85	
5530	25.76	-5.89	-0.91	-3.06	14.824	10.938	-0.91	-14.31	4.98	180	59.22	59.76	
5540	24.98	-6.02	-1.1	-3.15	14.394	10.582	-1.1	-14.39	5.02	90	59.72	60.24	
5550	23.67	-6.26	-1.35	-3.5	13.623	10.044	-1.35	-15.13	4.91	180	59.62	59.91	
5560	23.18	-6.35	-1.65	-3.8	13.419	9.762	-1.65	-15.04	4.7	120	59.57	59.87	
5570	23.5	-6.29	-1.54	-3.69	13.674	9.829	-1.54	-14.73	4.75	120	59.69	60.06	
5580	23.33	-6.32	-1.66	-3.81	13.472	9.857	-1.66	-15.33	4.66	120	59.79	60.69	
5590	22.67	-6.45	-1.62	-3.77	13.184	9.487	-1.62	-15.37	4.82	120	59.95	60.52	
5600	22.42	-6.49	-1.56	-3.71	13.121	9.301	-1.56	-17.75	4.93	120	59.93	60.55	
5610	22.72	-6.44	-1.79	-3.94	13.239	9.485	-1.79	-17.15	4.64	120	60.09	60.3	
5620	22.52	-6.48	-1.82	-3.97	13.062	9.453	-1.82	-18.16	4.66	120	59.86	60.32	
5630	22.7	-6.44	-1.97	-4.12	13.299	9.402	-1.97	-19.42	4.46	120	59.92	60.1	
5640	22.73	-6.43	-2.15	-4.3	13.344	9.385	-2.15	-20.02	4.28	120	59.66	59.99	
5650	23.26	-6.33	-2.23	-4.38	13.641	9.619	-2.23	-20.01	4.11	90	59.9	60.47	
5660	24.22	-6.16	-1.94	-4.09	14.245	9.979	-1.94	-20.17	4.22	90	59.8	59.99	
5670	24.27	-6.15	-1.85	-4	14.264	10.005	-1.85	-20.35	4.3	90	59.63	59.96	
5680	25.21	-5.98	-1.86	-4.01	14.933	10.281	-1.86	-19.69	4.12	90	59.48	59.66	
5690	25.61	-5.92	-1.83	-3.98	15.236	10.373	-1.83	-19.5	4.09	90	59.78	60	
5700	25.05	-6.01	-2.09	-4.24	15.008	10.042	-2.09	-19.58	3.92	90	59.86	60.1	
5710	24.28	-6.15	-2.27	-4.42	14.464	9.813	-2.27	-18.68	3.87	90	60.11	60.3	
5720	24.68	-6.08	-2.26	-4.41	14.731	9.947	-2.26	-20.28	3.82	90	60.11	60.53	
5730	25.27	-5.97	-2.24	-4.39	15.202	10.072	-2.24	-18.76	3.73	90	60.17	60.56	
5740	25.74	-5.89	-2.28	-4.43	15.454	10.285	-2.28	-18.56	3.61	90	60.36	60.32	
5750	25.84	-5.88	-2.13	-4.28	15.519	10.319	-2.13	-16.92	3.74	90	60.26	60.44	
5760	24.59	-6.09	-2.34	-4.49	14.791	9.798	-2.34	-16.86	3.75	90	60.12	60.44	
5770	24.53	-6.1	-2.49	-4.64	14.65	9.878	-2.49	-16.23	3.62	90	59.88	60.51	
5780	24.32	-6.14	-2.31	-4.46	14.51	9.815	-2.31	-16.62	3.83	120	59.97	60.31	
5790	23.88	-6.22	-2.63	-4.78	14.178	9.705	-2.63	-17.42	3.59	90	60.01	60.31	
5800	23.63	-6.26	-2.6	-4.75	14.025	9.608	-2.6	-16.51	3.66	120	60.01	60.28	
5810	23.38	-6.31	-2.68	-4.83	13.811	9.565	-2.68	-16.56	3.64	120	60.55	60.17	
5820	23.36	-6.31	-2.44	-4.59	13.579	9.785	-2.44	-16.89	3.87	120	60.29	60.82	
5830	23.42	-6.3	-2.34	-4.49	13.602	9.821	-2.34	-16.93	3.96	150	60.47	60.89	
5840	24.21	-6.16	-2.25	-4.4	14.073	10.138	-2.25	-18.68	3.91	120	60.23	60.84	
5850	25.19	-5.99	-2.05	-4.2	14.402	10.79	-2.05	-16.36	3.93	150	60.29	60.56	



The Environment of Antenna Radiation Pattern

