

WELCOME TO THE LAB

The Lab is where you'll find real people, developing really great products, in a real place called San Diego.

PERSONAL TECH DONE BETTER



Designed for You

We actually listen to what you want and we're always looking for ways to make everything easier and better for you.



Lab Quality Sound

Choose from different settings and customize your sound style to match exactly what you're doing.



Surprisingly Awesome Value

We always pack in the most functionality and fun into every product at a truly accessible price.

#yourkindoftech

WITH LOVE FROM THE LAB

We have lots of different ways to show we care.

GET STARTED + FREE GIFT

Product updates | How-to tips | FAQs & more
Go to [this link](#) to unlock your customer benefits including a free gift.

Gift for US only. No APPODDO addresses.

WE GOT YOUR BACK

We're obsessed with creating the best possible experience around owning our products. If you have any questions, concerns, or feedback, we're here for you. Contact a real human on our U.S.-based customer support team:

Website: [jlab.com/contact](#)

Email: support@jlab.com

Phone US: +1 (408) 445-7219

Phone UK/EU: +44 (0) 8142 9361

(Check hours [jlab.com/hours](#))

Visit [jlab.com/warranty](#) to initiate a return or exchange.

LATEST AND GREATEST

Our team is constantly improving your product experience. This model may have new features or controls which are not detailed in this guide.

For the latest version of the manual, scan the QR code below.



FCC ID: 2AP7XK-BLUX
IC: 2155-BLUX



JLAB®

JBUDSLUX
ANC WIRELESS
OVER-EAR HEADPHONES

QUICK START GUIDE

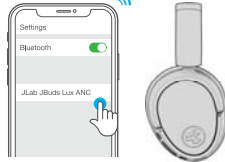
BLUETOOTH

1

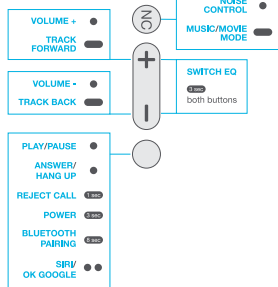


2

Enter your Bluetooth device settings and select JLab JBuds Lux ANC.

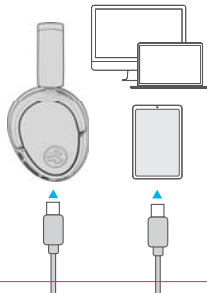


CONTROLS 1x Press ● 2x Press ●● Press Hold ■



GO WIRED

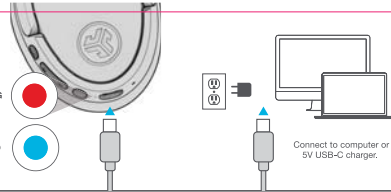
Connect USB-C cable to computer/tablet/phone for wired mode.



CHARGING

CHARGING

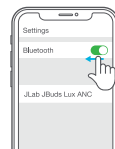
CHARGED



BLUETOOTH MULTIPPOINT (CONNECT 2 DEVICES SIMULTANEOUSLY)

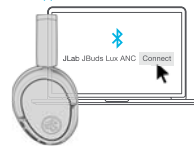
1

Once **FIRST** device is connected, turn off Bluetooth in device settings. JBuds Lux will auto enter Bluetooth Pairing.



2

Enter your **SECOND** device Bluetooth settings and connect to JBuds Lux.



3

Enter **FIRST** device settings. Turn on Bluetooth and reconnect to JBuds Lux.



DOWNLOAD THE MOBILE APP

Customize JBuds Lux features and update the latest software.



SCAN ME



Date: 12.18.23

PROJECT: JLab JBuds Lux ANC QSG

STOCK: 220g, MATTE

INK: 6/2 CMYK + 306 + Cool Gray 11 / 306 + Cool Gray 11

FLAT SIZE: