



JLAB®
JBUDS ANC
|
EARBUDS

We love that you are rocking JLab!
We take pride in our products and fully stand behind them.



YOUR WARRANTY

All warranty claims are subject to JLab authorization and at our sole discretion. Retain your proof of purchase to ensure warranty coverage.



CONTACT US

Reach out to us at support@jlab.com or visit jlab.com/contact

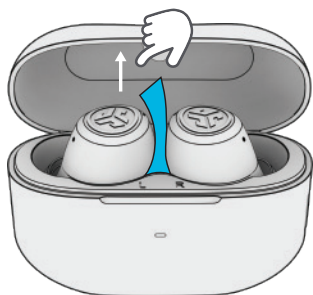
REGISTER TODAY

jlab.com/register

[Product updates](#) | [How-to tips](#)
[FAQs & more](#)

PAIR UP

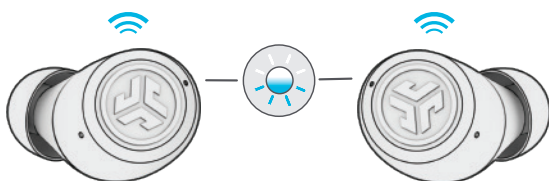
- 1** Remove tab and close case door.



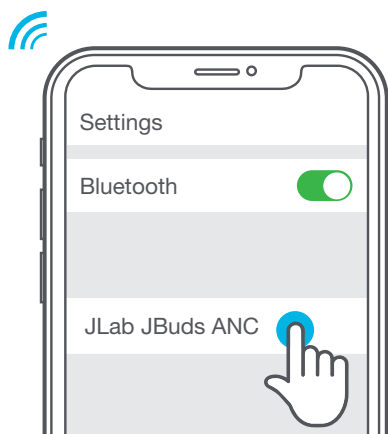
- 2** Pulsing blue on case indicates charging. Remove earbuds from case.



- 3** One earbud blinks blue/white = Ready to Pair



- 4** Select "JLab JBuds ANC" in your Bluetooth settings to connect.



Voice prompt "Bluetooth connected" followed by **lights off** will indicate connection.

GO AHEAD, PRESS THE BUTTON

LEFT



VOLUME DOWN: 1x

VOICE ASSISTANT: 2x

NOISE CONTROLS: Press Hold

EQ CHANGE: 3x

RIGHT



VOLUME UP: 1x

PLAY/PAUSE: 2x

TRACK FORWARD: Press Hold

EQ CHANGE: 3x

ANSWER CALL: 1x

HANG UP CALL: 2x

REJECT INCOMING CALL: Press Hold

THE RIGHT SOUND FOR EVERY MOMENT

EQUALIZER MODES



JLab SIGNATURE

JLab C3™ signature sound with amplified bass and vocals

BEST FOR

Best option for most music: Pop, rock, country, electronic and more



BALANCED

Even sound with no additional enhancements

BEST FOR

Podcasts, Audiobooks
Classical music



BASS BOOST

Amplified bass and sub-bass

BEST FOR

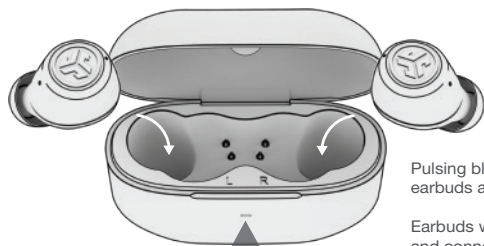
Working out, sport and fitness, Hip hop, rap, electronic



"CUSTOM"

Personalize your EQ through the JLab App.

GET CHARGED EARBUDS



Pulsing blue lights indicate earbuds are charging.

Earbuds will auto power on and connect when removed.



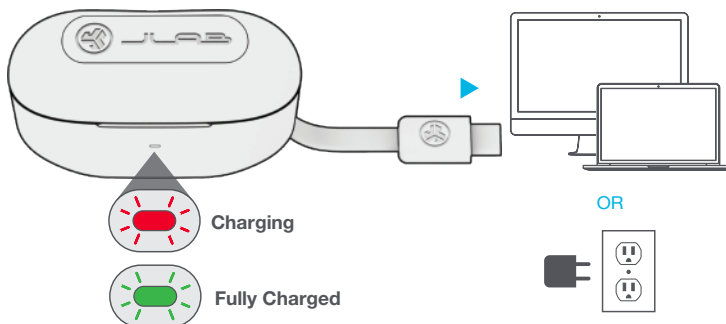
Solid Green
Case 100-25%



Blinks 4x Red
Case less than 25% (charge case)

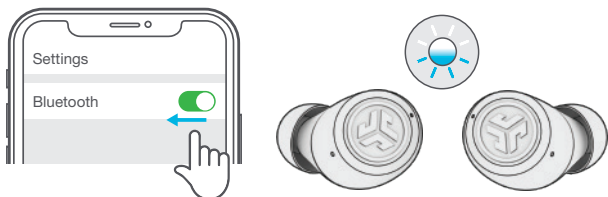
GET CHARGED (CASE)

Connect the JBuds ANC to computer or USB 5V 1A (or less) output device.



MULTIPOINT

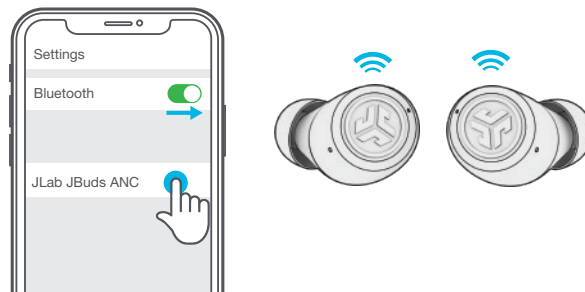
- 1 Once **FIRST** device is connected, turn off Bluetooth in device settings. JBuds ANC will auto enter Bluetooth Pairing.



- 2 Enter your **SECOND** device Bluetooth settings and connect to JBuds ANC.



- 3 Enter your **FIRST** device Bluetooth settings. Turn on Bluetooth and connect to JBuds ANC.



DOWNLOAD THE APP

Customize JBuds ANC features and update the latest software.

Download the **JLab App** in Apple/Google Play Store.



TROUBLESHOOTING

BLUETOOTH OR EARBUD CONNECTION FAILURE (MANUAL RESET)

- 1 Keep the earbuds in the charging case and forget "JLab JBuds ANC" from your Bluetooth device settings.
- 2 Quick tap 7x on one earbud in charging case. Earbud blinks blue 4 times.
- 3 Quick tap 7x on other earbud in charging case. Earbud blinks blue 4 times.
- 4 Take both earbuds out of the charging case. One earbud will be solid white and other will blink blue/white indicating ready to pair to your device.



[Shop products](#) | [Product alerts](#) | [Burn-in your headphones](#)

JLab Store + Burn-in Tool



FCC ID: 2AHYV-JBANC
IC: 21316-JBANC