

## LATEST AND GREATEST

Our team is constantly improving your product experience. This model may have new features or controls which are not detailed in this guide.

For the latest version of the manual, scan the QR code below.



FCC ID: 2AHYV-GPANC  
IC: 21316-GPANC

## WITH LOVE FROM THE LAB

We have lots of different ways to show we care.

### GET STARTED + FREE GIFT

Product updates | How-to tips | FAQs & more

Go to [jlab.com/register](https://jlab.com/register) to unlock your customer benefits including a free gift.

Gift for US only. No APO/FPO/DPO addresses.

### WE GOT YOUR BACK

We're obsessed with creating the best possible experience around owning our products. If you have any questions, concerns, or feedback, we're here for you. Contact a real human on our U.S.-based customer support team:

Website: [jlab.com/contact](https://jlab.com/contact) Email: [support@jlab.com](mailto:support@jlab.com)

Phone U.S.: +1 (405) 445-7219

Phone U.K./EU: +44 (20) 8142 9361

(Check hours [jlab.com/hours](https://jlab.com/hours))

Visit [jlab.com/warranty](https://jlab.com/warranty) to initiate a return or exchange.

## THE RIGHT SOUND FOR EVERY MOMENT

We get it, sound is personal. Choose your sound preferences from our EQ3 settings and customize your sound style to match exactly what you're doing.

### EQUALIZER MODES

**"JLab SIGNATURE"**  
JLab C3™ signature sound with amplified vocals and bass

**BEST FOR**  
Best option for most music  
Pop, rock, country, electronic and more

**"BALANCED"**  
Even sound with no additional sound enhancements

**BEST FOR**  
Podcasts, Audiobooks  
Classical music

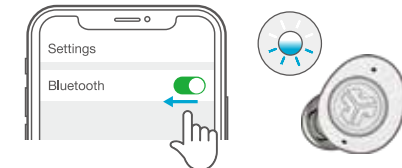
**"BASS BOOST"**  
Amplified bass and sub-bass

**BEST FOR**  
Working out, sport and fitness  
Hip hop, rap, electronic

**"CUSTOM"**  
Personalize your EQ through the JLab App.

## MULTIPOINT

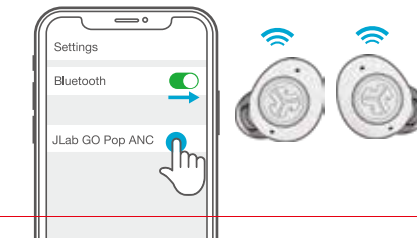
- 1 Once **FIRST** device is connected, turn off Bluetooth in device settings. GO Pop ANC will auto enter Bluetooth Pairing.



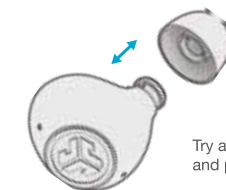
- 2 Enter your **SECOND** device Bluetooth settings and connect to GO Pop ANC.



- 3 Enter your **FIRST** device Bluetooth settings. Turn on Bluetooth and connect to GO Pop ANC.



## FIND YOUR FIT



Try all ear tips for best fit and proper seal.



Place the earbud in the ear canal and slightly rotate to adjust for best fit.

Instructional videos at:  
[JLAB.COM/SUPPORT/GOPOPANC](https://jlab.com/support/gopopanc)



**GO POP ANC**  
TRUE WIRELESS EARBUDS

**QUICK START** GUIDE



## WELCOME TO THE LAB

The Lab is where you'll find real people, developing really great products, in a real place called San Diego.

## PERSONAL TECH DONE BETTER



### Designed for You

We actually listen to what you want and we're always looking for ways to make everything easier and better for you.



### Lab Quality Sound

Choose from different settings and customize your sound style to match exactly what you're doing.



### Surprisingly Awesome Value

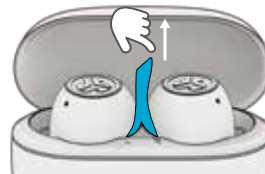
We always pack in the most functionality and fun into every product at a truly accessible price.

# #yourkindoftech

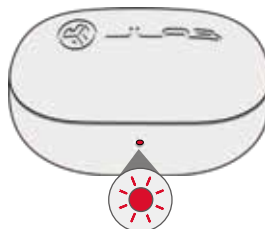
Tech all about you

## PAIR UP

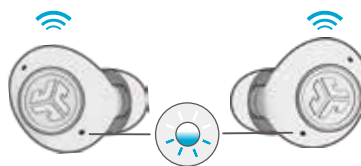
- 1 Remove tab and close door.



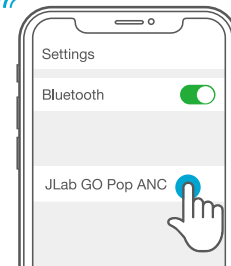
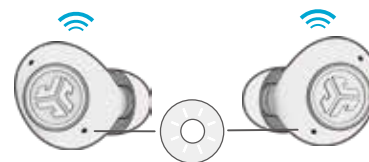
- 2 Red light on case indicates charge. Remove earbuds from case.



- 3 One earbud blinks blue/white = Ready to Pair



- 4 Select "JLab GO Pop ANC" in your Bluetooth settings to connect.



Voice prompt "Bluetooth connected" followed by **lights off** will indicate connection.

## GO AHEAD, PRESS THE BUTTON

1x ● 2x ●● 3x ●●● Press Hold —

### LEFT



VOLUME DOWN ●  
SIRI/OK GOOGLE ●●  
NOISE CONTROL —  
EQ CHANGE ●●●

### RIGHT



VOLUME UP ●  
PLAY/PAUSE ●●  
TRACK FORWARD —  
EQ CHANGE ●●●

ANSWER CALL ●

HANG UP ●●

REJECT INCOMING CALLS —

## DOWNLOAD THE APP

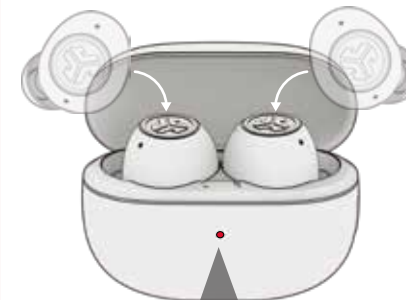
Customize GO Pop ANC features and update the latest software.

Download the **JLab App** in Apple/Google Play Store.



## GET CHARGED (EARBUDS)

- 1 Earbuds will power off and start charging when placed in the case.



**Solid Red**  
Case 100-25%

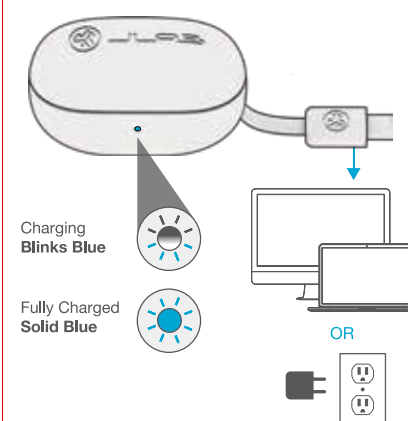
**Blinks 3x Red**  
Case less than 25% (charge case)

- 2 Earbuds will auto power on and connect when removed.



## GET CHARGED (CASE)

Connect the GO Pop ANC into a computer or USB-C 5V 1A (or less) output device.



Charging  
**Blinks Blue**

Fully Charged  
**Solid Blue**

OR

