

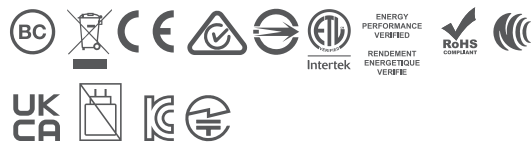
LATEST AND GREATEST

Our team is constantly improving your product experience. This model may have new features or controls which are not detailed in this guide.

For the latest version of the manual, scan the QR code below.



- DE Die vollständige Bedienungsanleitung ist online abrufbar unter intl.jlab.com/manuals
- FR Accédez au manuel complet du produit à l'adresse suivante: intl.jlab.com/manuals
- ES Acceda al manual completo del producto en intl.jlab.com/manuals
- PT Aceda ao manual completo do produto em intl.jlab.com/manuals
- IT È possibile consultare il manuale del prodotto alla pagina intl.jlab.com/manuals
- NL Toegang tot volledige producthandleiding op intl.jlab.com/manuals



Distributed in U.K. by: JLab o/o Tiogo Limited
21 Headlands Business Park, Ringwood, Hampshire BH24 3PB United Kingdom

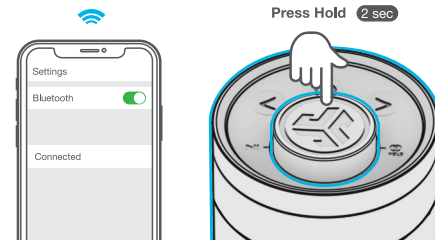
EU Importer: JLab
5927 Landau Court
Carlsbad, CA 92008, USA

FCC ID: 2A4YV-GOSP
IC: 21316-GOSP

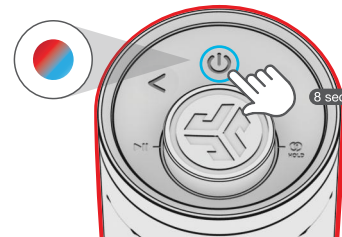
LABSYNC (Cast to other JLab Party Speakers)

1 Connect **GO Party** to your device.

Press Hold to enter LabSync.
GO Party will say "LabSync"



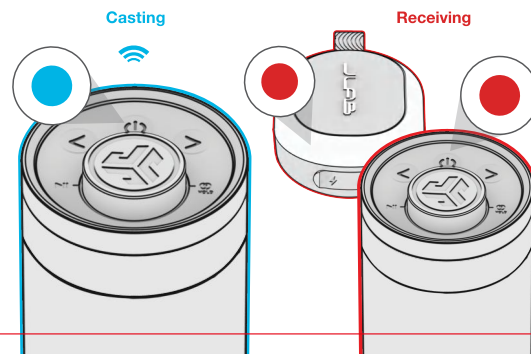
2 With your other **JLab Party Speaker(s)** turned off, Press hold power button until LEDs flash blue/red.



3 Followed by entering LabSync on your other speaker(s).



4



WITH LOVE FROM THE LAB

We have lots of different ways to show we care.

GET STARTED + FREE GIFT

Product updates | How-to tips | FAQs & more
Go to jlab.com/register or intl.jlab.com/register to unlock your customer benefits including a free gift.

Gift for US only. No APO/FPO/DPO addresses.

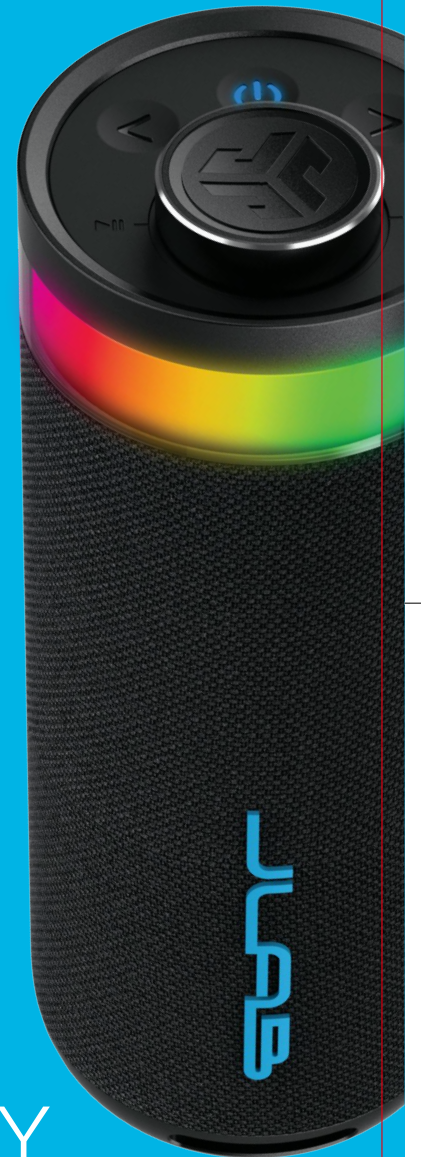
WE GOT YOUR BACK

We're obsessed with creating the best possible experience around owning our products. If you have any questions, concerns, or feedback, we're here for you. Contact a real human on our U.S.-based customer support team:

- Website: jlab.com/contact
- Email: support@jlab.com
- Phone U.S.: +1 (405) 445-7219 (Check hours jlab.com/hours)
- Phone U.K./EU: +44 (20) 8142 9361 (Check hours jlab.com/hours)

Visit jlab.com/warranty to initiate a return or exchange.
For international, visit intl.jlab.com/warranty to initiate a return or exchange.

Instructional videos at:
HELP.JLAB.COM
or INTL.JLAB.COM/MANUALS



GO PARTY

PORTABLE BLUETOOTH SPEAKER

QUICK START GUIDE



WELCOME TO THE LAB

The Lab is where you'll find real people, developing really great products, in a real place called San Diego.

PERSONAL TECH DONE BETTER



Designed for You

We actually listen to what you want and we're always looking for ways to make everything easier and better for you.



Lab Quality Sound

Choose from different settings and customize your sound style to match exactly what you're doing.



Surprisingly Awesome Value

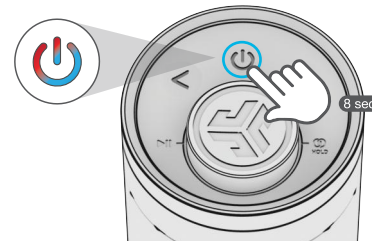
We always pack in the most functionality and fun into every product at a truly accessible price.

#yourkindoftech

Tech all about you

PAIR UP

- 1 Press and hold button. Lights will flash **blue/red** to indicate pairing mode.

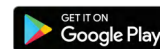


- 2 Select JLab GO Party in your device settings to connect.

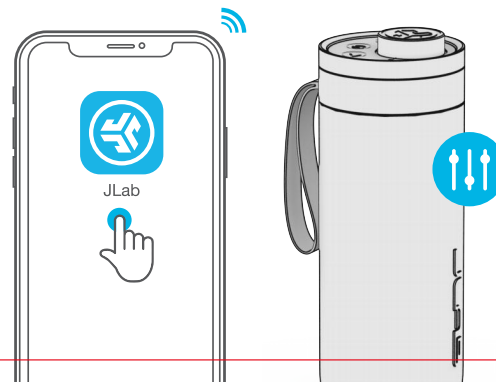


DOWNLOAD THE APP

Customize the Sound, Lights, and Features.



SCAN ME



GO AHEAD, PRESS THE BUTTON

POWER ON: PRESS HOLD 2s
POWER OFF: PRESS HOLD 3s
LED CHANGE: 1x (cycles 6 LED Animations)
PAIR NEW DEVICE: When powered off PRESS HOLD 8s

TRACK FORWARD: 1x
TRACK BACK: 1x
EQ CHANGE: SIMULTANEOUS PRESS HOLD



VOLUME: ROTATE
PLAY/PAUSE: 1x
LabSync: PRESS HOLD (see LabSync page to connect JLab Party Speakers)

QUICK TIPS

- GO Party is set to Eco-Mode by default. Lights will turn off when battery is less than 25% to conserve power.
- Turning off the lights will significantly improve playtime.
- GO Party will auto power off if no media is playing for 30 minutes.
- Download the JLab App to adjust the default settings.
- LabSync works with all JLab Pop Party, GO Party, JBuds Party, and Epic Party speakers.

GET CHARGED

Connect to computer or USB-C charger.

