

**TREK**

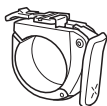
## BellBeats

5326370

### Parts list



**BellBeats digital bell**  
5326679



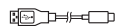
**Quick release handlebar mount**  
5326680



**Shims**  
5326681  
2 large, 2 small



**Attachable clip**  
528503



**USB-C cable**  
W5268686



*Smartphone needed to pair*

### Battery fuel gauge



**4 green** = 100%



**3 green** = 75%



**2 amber** = 50%



**1 red** = 25%



**1 red flashing** ≤5%

### Specifications

- Battery: rechargeable Lithium-polymer (Li-Po)
- Capacity: 650mAh
- Voltage: 3.7v
- Wattage: 2.40 Wh
- Charging temperature: 35°F to 113°F (0°C to 45°C)\*
- Operating temperature: 14°F to 122°F (-10°C to 50°C)\*
- Storage temperature: 14°F to 113°F (-10°C to 45°C)\*
- Water ingress rating: IP67
- Weight: 70g (2.5oz)
- Charge port: USB-C
- Dimensions: 70 x 50 x 30mm
- Music runtime: 6 hours
- Charge time: 4 hours
- Charging voltage: 5VDC
- Maximum wattage: 5V, 3.2W

### Operation

#### Power

- Hold play (▷) button for 2 seconds to power on and off.

#### Trigger (X)

- Press for customizable sound option 1.
- Hold for customizable sound option 2.
- See the Sound Selection mode section for more information on available sounds.

With Bluetooth connected, single press the play (▷) button to pause/start your media.

### Battery charging



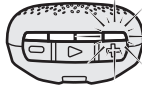
**LED 1 is slow flashing red**  
≤25%



**LED 1 is solid amber and LED 2 is slow flashing amber**  
≥25% and <50%



**LEDs 1 and 2 are solid green and LED 3 is slow flashing green**  
≥50% and <75%



**LEDs 1, 2, and 3 are solid green, and LED 4 is slow flashing green**  
≥75% and <100%



**All four LEDs are solid green**  
=100%  
After battery is 100% charged all LEDs will turn off after 60 seconds.

### About

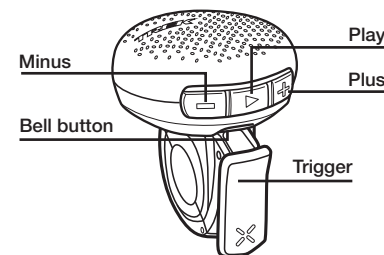
BellBeats is a rechargeable, digital amplifier that works as a bell and a music speaker. It is customizable to deliver sounds based on where and who you are trying to alert.

#### ⚠ WARNING

Do not use if the battery is impacted. Also do not puncture, crush, deform, disassemble, or heat a lithium-ion battery above °140 F (°60 C). Damage to the battery may result in a fire, explosion, and/or exposure to specks of lithium or lithium dust.

### For more information

If you need help not offered by this manual, talk to your Trek retailer or visit [trekbikes.com](http://trekbikes.com).



### Volume buttons

#### Minus button (-)

- Single press to decrease volume in increments.
- Press and hold to decrease volume quickly.
- Double click to restart a song or to skip to previous song if at start of the song.

#### Plus button (+)

- Single press to increase volume in increments.
- Press and hold to increase volume quickly.
- Double click to skip to next song.

### Sound Select mode

Press and hold the Play button (▷) and Trigger (X) to enter Sound Selection.

Choose between friendly alerts for quiet environments, louder alerts for louder environments, fun sounds for all use cases, and looping sounds for shared pathways and two-way mountain biking trails.

#### Short Press Selection

Press the Plus (+) or Minus (-) buttons to scroll through available sounds.

- Press the Trigger (X) to replay the sound.
- Press Play (▷) to select the sound.

**NOTE:** Looping sounds are only available in **Long Press Selection**.

### Charging the battery

Trek recommends you charge the BellBeats before first use.

**IMPORTANT:** For best results, charge at room temperature in a dry place. Use an approved (ex. UL certified) USB-C charger rated for 500mA or greater. Avoid extreme conditions including wet, cold, or extreme heat.

1. Open the USB port cover.
2. Plug the USB-C charger cable into the USB port on the unit.
3. Plug the cable into a computer or wall adapter.
4. When all lights are off, the charge is complete. Unplug the charger cable and close the USB port cover.

**IMPORTANT:** Ensure the USB cover is latched before riding in rain or wet conditions. If the USB cover is not closed, damage to the unit may occur. Do not leave the unit outdoors when not in use.

#### Long Press Selection

After selecting a short press sound, BellBeats automatically enters Long Press Selection.

- Press the Plus (+) or Minus (-) buttons to scroll through available sounds.
- Press the Trigger (X) to replay the sound.
- Press the Play (▷) button to select the sound. Once a sound is selected, BellBeats will exit Sound Selection mode.

### Additional operations

#### Force activate pairing mode

1. When unit is off, press and hold Play (▷) button for 5 seconds.
2. See the Pairing operation.

#### Demo mode

When the unit is off, hold the Play (▷) and Plus (+) buttons for 8 seconds to enter Demo mode. In this mode each trigger press will play a different bell sound.

#### Pairing

Pairing mode starts automatically when BellBeats is turned on.

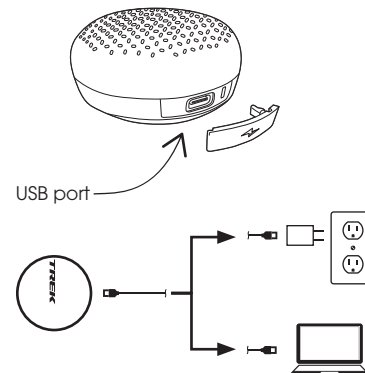
- When the connection is made, you will hear a sound and the LEDs will blink.
- If no connection is made after 5 minutes, Bluetooth will turn off.
- While pairing mode is active, press any button to stop pairing to a new device.
- To re-activate pairing mode, press either the play (▷), plus (+), or minus (-) button.

#### When connection is made:

- You will hear a successful connection sound.
- LEDs will blink a successful connection.

#### Factory reset

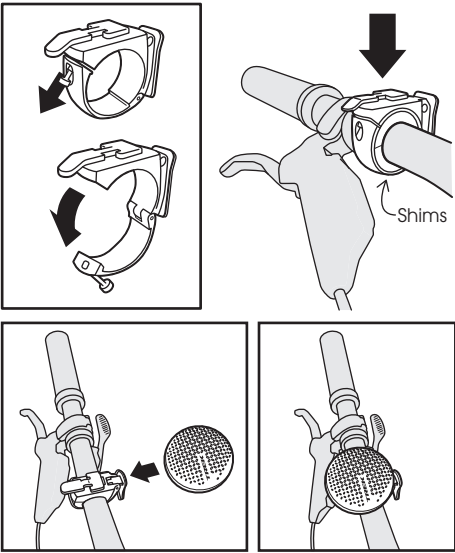
When unit is on, press and hold the Minus (-) and Plus (+) buttons for 8 seconds.



Installation

Handlebar

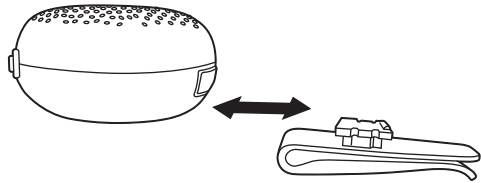
1. Unscrew the bolt to open the mount.
2. Use shims as necessary to fit your handlebar.
3. Close clamp around handlebar.
4. Tighten the bolt sufficient to securely fix the clamp to the handlebar and prevent movement.
5. Slide the BellBeats onto the mount until it locks in place.
6. To remove, press down on the tab and slide the BellBeats out of the mount.



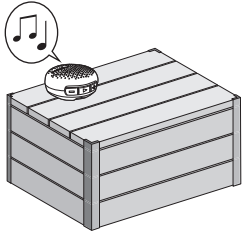
Options

Clip mount

Slide the optional clip onto the BellBeats until it locks in place.



Mount to backpack straps, etc.



Traveling

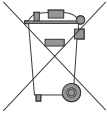
The BellBeats digital speaker contains a lithium-polymer battery. Certain restrictions may apply to this product when traveling, especially when traveling by air. Always check with your carrier for specific restrictions prior to traveling with or shipping this product.

Battery care

Store the BellBeats digital speaker at room temperature in a dry place. Avoid moisture, or extreme hot or cold. Store the speaker in the charged condition. Avoid “deep discharge.” Battery life will decrease if the speaker is stored in a fully discharged condition. Over time, the run time of the battery will diminish. Expect about 500 full charges, depending on care. After a full life, the battery will continue to charge but with a lower run time. When the run time is unsatisfactory, please recycle. Do not open the speaker case or incinerate.

Recycling

Please recycle the battery. In the US, you can find out where to do this at call2recycle: <http://www.call2recycle.org/> This symbol on the product(s) and/or accompanying documents means that used electrical and electronic products should not be mixed with general household waste. For proper treatment, recovery, and recycling outside the US, please take this product(s) to designated collection points. Alternatively, in some countries you may be able to return your products to your local retailer upon purchase of an equivalent new product. Disposing of this product correctly will help save valuable resources and prevent any potential negative effects on human health and the environment, which could otherwise arise from inappropriate waste handling. Please contact your local authority for further details of your nearest designated collection point. Penalties may be applicable for incorrect disposal of this waste, in accordance with your national legislation.



Trek contact information

North America

Trek Bicycle  
801 West Madison Street  
Waterloo, WI 53594 USA  
Tel: +1 800-313-8735

Europe

Bikeurope BV  
Ceintuurbaan 2-20C  
3847 LG Harderwijk  
The Netherlands  
Tel: +31 (0)33 45 09 060

Australia

Trek Bicycle Corp. Au.  
8 Townsville Street  
(Level One)  
Fyshwick (ACT)  
2609 AU  
Tel: +61 (02) 61 732 400

South Korea

5th floor, 312, Yeongdong-daero  
Gangnam-gu, Seoul  
Republic of Korea  
ZIP Code: 06177

Japan

トレック・ジャパン(株)  
7-28 Oide-cho  
Nishinomiya-shi, Hyogo-ken  
Japan 662-0036

United Kingdom

Trek Bicycle Corporation, Ltd.  
Victory House South  
The Park MK  
Ortensia Drive  
Milton Keynes  
MK 17 8 LX  
UK  
TEL: +44 1908 360 140

European Union Compliance

• Trek Bicycle Corporation hereby declares that the wireless device identified as ‘BellBeats’ is in compliance with the following European Directives:

- Radio Equipment Directive 2014/53/EU
- EMC Directive 2014/30/EU
- Low Voltage Directive 2014/35/EU
- RoHS Directive 2011/65/EU

The full text of the EU declaration of conformity is available from your dealer, or at the following internet address: [help.trekbikes.com/compliance-documentation](http://help.trekbikes.com/compliance-documentation)

UK Compliance

Trek Bicycle Corporation hereby declares that the device identified as ‘BellBeats’ is in compliance with the following UK legislation:

- The Radio Equipment Regulations 2017
- The Electromagnetic Compatibility Regulations 2016
- Electrical Equipment (Safety) Regulations 2016
- The Restriction of the Use of Certain Hazardous Substances in Electrical and Electronic Equipment Regulations 2012

Full text of the UK declaration of conformity is available from your dealer, or at the following internet address: [help.trekbikes.com/compliance-documentation](http://help.trekbikes.com/compliance-documentation)

FCC Compliance Statement:

BellBeats - FCC ID: 2AHXD-5304359

This device complies with part 15 of the FCC Rules. Operation is subject to the following conditions: (1) this device may not cause harmful interference, and (2) this device must accept any interference received, including interference that may cause undesired operation. NOTE: This equipment has been tested and found to comply with the limits for a Class B digital device, pursuant to Part 15 of the FCC Rules. These limits are designed to provide reasonable protection against harmful interference in a residential installation. This equipment generates uses and can radiate radio frequency energy and, if not installed and used in accordance with the instructions, may cause harmful interference to radio communications. However, there is no guarantee that interference will not occur in a particular installation. This product may cause interference to radio equipment and should not be installed near maritime safety communications equipment or other critical navigation or communication equipment operating between 0.45-30 MHz. If this equipment does cause harmful interference to radio or television reception, which can be determined by turning the equipment off and on, the user is encouraged to try to correct the interference by one or more of the following measures: — Reorient or relocate the receiving antenna. — Increase the separation between the equipment and receiver. — Connect the equipment into an outlet on a circuit different from that to which the receiver is connected. — Consult the dealer or experienced radio / TV technician for help. NOTES: TREK BICYCLE CORPORATION IS NOT RESPONSIBLE FOR ANY RADIO OR TV INTERFERENCE CAUSED BY UNAUTHORIZED MODIFICATIONS TO THIS EQUIPMENT. ANY CHANGES OR MODIFICATIONS NOT EXPRESSLY APPROVED BY TREK BICYCLE CORPORATION OF THIS DEVICE COULD VOID THE USER’S AUTHORITY TO OPERATE THE DEVICE.

ON FRENCH VERSION ONLY



**Bluetooth version: V5.3**  
**Bluetooth transmitter frequency range: 2.402 GHz~2.48 GHz**  
**Bluetooth transmitter power: <10dBm**  
**Bluetooth transmitter modulation: GFSK, π/4 DQPSK**

ISED Regulatory Compliance  
IC ID: 5304359-21334  
This device contains license-exempt transmitter(s)/receiver(s) that comply with Innovation, Science and Economic Development Canada’s license-exempt RSS(s). Operation is subject to the following two conditions: (1 ) This device may not cause interference.(2)This device must accept any interference, including interference that may cause undesired operation of the device.  
CAN ICES003- (B)/NMB003-(B)  
L’émetteur/récepteur exempt de licence contenu dans le présent appareil est conforme aux CNR d’Innovation, Sciences et Développement économique Canada applicables aux appareils radio exempts de licence. L’exploitation est autorisée aux deux conditions suivantes : (1) L’appareil ne doit pas produire de brouillage; (2) L’appareil doit accepter tout brouillage radioélectrique subi, même si le brouillage est susceptible d’en compromettre le fonctionnement.  
RF Exposure Compliance  
This equipment complies with FCC/IC radiation exposure limits set forth for an uncontrolled environment. This transmitter must not be co-located or operating in conjunction with any other antenna or transmitter.  
ce matériel est conforme aux limites de dose d’exposition aux rayonnements FCC/IC énoncées pour un autre environnement.cet émetteur ne doit pas être situées ou opérant conjointement avec toute autre antenne ou l’émetteur.

