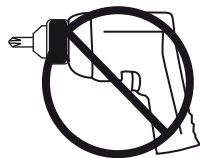


A. DOOR & JAMB PREPARATION/ LATCH INSTALLATION

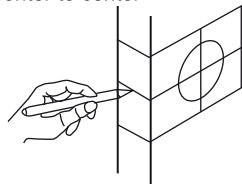


OR

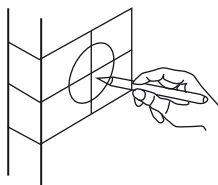


1. Mark Door

- 1) Use template provided to mark door for drilling 104.2 cm (41") from base of the door or 14cm (5-1/2") above door knob or lever center to center

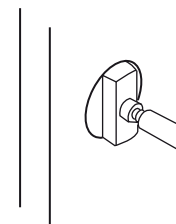


- 2) Use the template to select backset 60mm (2-3/8") or 70mm (2-3/4")

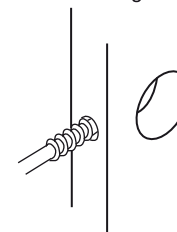


2. Drill Holes

- 1) Bore 54mm (2-1/8") hole through door face from both sides of door to avoid damaging door surface

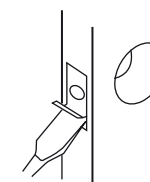
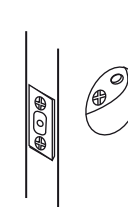


- 2) Drill 25mm (1") hole through door edge



3. Install Deadbolt Latch

- 1) Insert deadbolt latch into hole, secure the face plate all around and the screw hole
- 2) Chisel recess for face plate

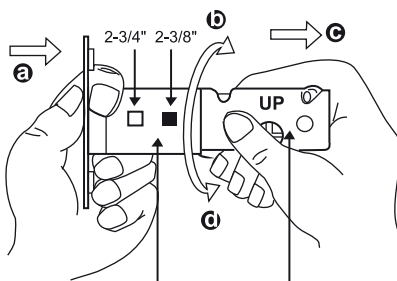


Chisel 3mm (1/8") deep

3) Deadbolt adjustment

CAUTION: Deadbolt is preset at factory for 60mm (2-3/8")

i) Converting 60mm (2-3/8") to 70mm (2-3/4") BACKSET



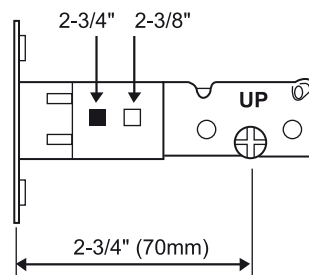
Cylindrical cover

extension plate

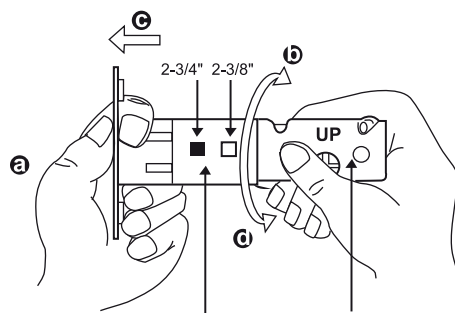
- a) Always press deadbolt with thumb, make sure to face with UP indication
- b) Rotate the cylindrical cover clockwise
- c) Then pull the extension plate all the way out
- d) Then rotate the cylindrical cover counter-clockwise to 70mm (2-3/4") position

● **IMPORTANT: Always press deadbolt with thumb.**

- e) Your latch is now set 70mm (2-3/4") backset



ii) Converting 70mm (2-3/4") to 60mm (2-3/8") BACKSET

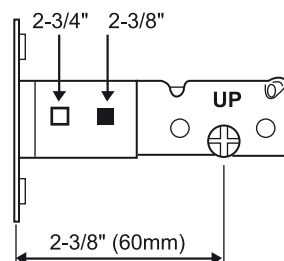


Cylindrical cover

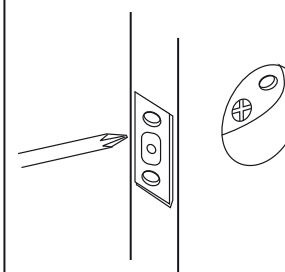
extension plate

- a) Always press deadbolt with thumb, make sure to face with UP indication
- b) Rotate the cylindrical cover clockwise
- c) Then push the extension plate all the way in
- d) Then rotate the cylindrical cover counter-clockwise to 60mm (2-3/8") position

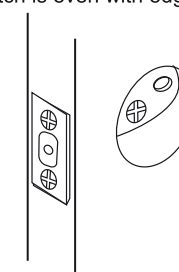
- e) Your latch is now set 60mm (2-3/8") backset



- 4) Secure latch with screws



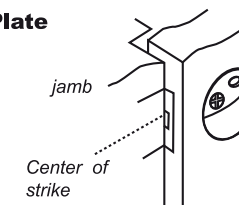
- 5) Make sure the face plate of the latch is even with edge of door



4. Drill Holes And Install Strike Plate

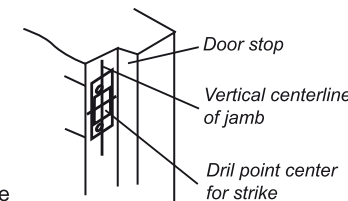
1) Mark jamb

- a) Close door until deadbolt latch touches door jamb. Mark door jamb as shown with a pencil
- b) Center the strike plate on the door jamb



2) Mark outline of strike plate

- a) Measure one half of door thickness from door stop and vertically mark drill point center for strike
- b) Place strike plate in position and mark outline of strike plate



3) Drill hole

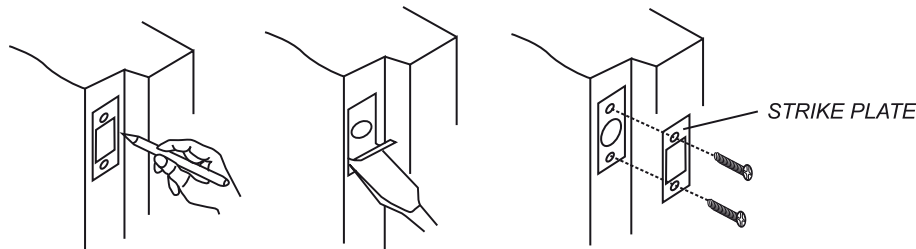
- a) Drill 25mm (1") hole in door jamb

● **Caution:**
hole in door jamb must be drilled 25mm (1") deep



5. Install Strike Plate

- 1) Chisel outline for strike plate 3mm (1/8") deep or until plate is flush with door jamb
- 2) Install strike plate with screws

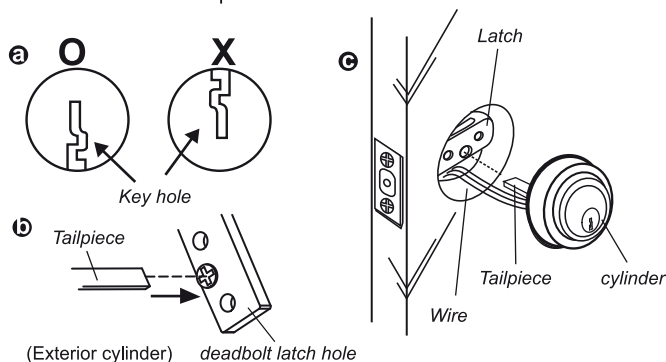


B. INSTALLATION OF DEADBOLT ASSEMBLY

1. Open the door to ease installation and ensure deadbolt is retracted
2. Place the exterior deadbolt assembly on the exterior of the door over the rubber gasket, aligning tailpiece horizontally through the deadbolt latch, while passing the wire under the deadbolt latch to the interior side of the door

IMPORTANT:

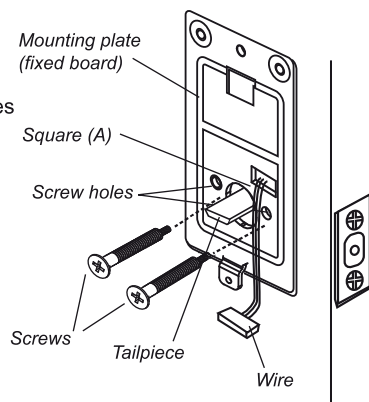
- Ⓐ Key hole should be in down position (as diagram Ⓐ)
- ⓑ Tailpiece of exterior cylinder should be inserted horizontally through deadbolt latch hole first
- ⓒ The wire should be pulled beneath the latch



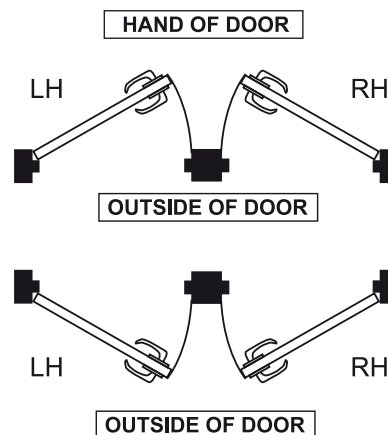
3. On interior side of door, place mounting plat and route the wire through square (A) on mounting plate
4. Secure and fasten mounting plate with 2 screws which with threaded of exterior key cylinder

● IMPORTANT:

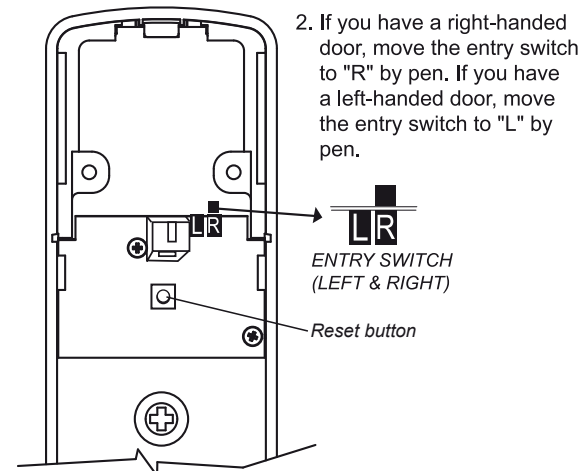
1. Be careful about the wire. Do not block the screw holes at the time of mounting the screws.
2. Ensure the mounting plate is positioned vertically.



C. ADJUSTING INTERIOR MODULE

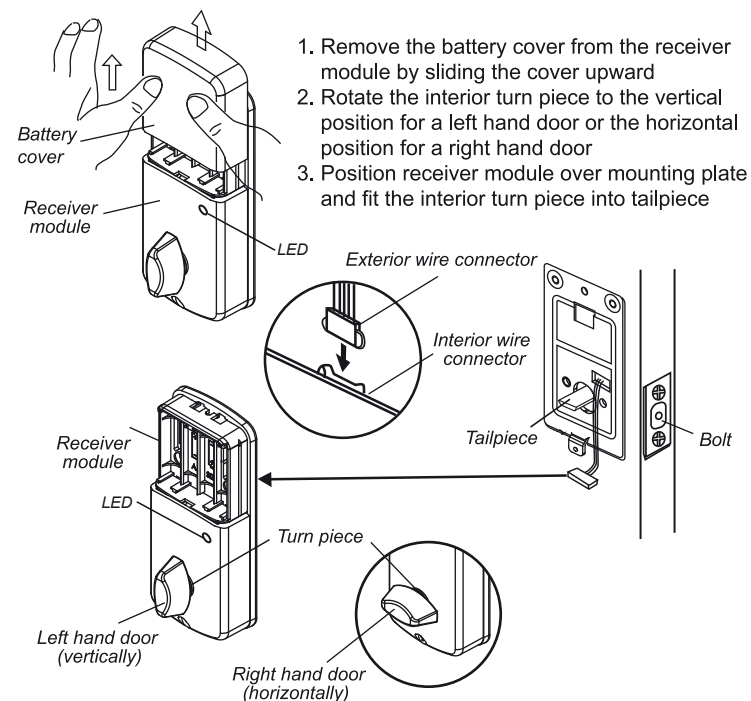


1. Check whether your door is right or left handed by standing outside and checking which side of the door the hinges are on. If the hinges are on the left side, the door is left handed, if the hinges are on the right side, the door is right handed.



2. If you have a right-handed door, move the entry switch to "R" by pen. If you have a left-handed door, move the entry switch to "L" by pen.

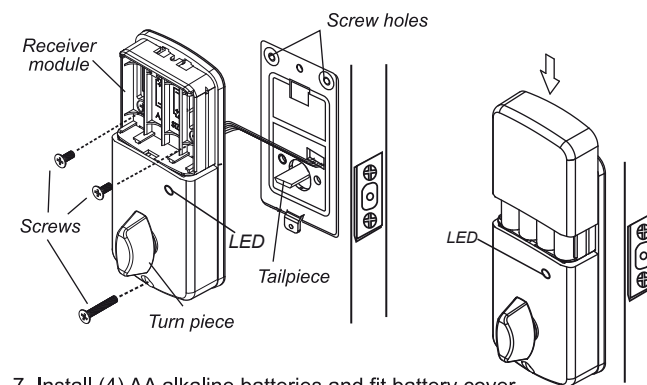
D. INSTALLATION OF INTERIOR MODULE



4. Check operation of the deadbolt manually turning the turn piece or using the key. Bolt should extend and retract freely. If bolt cannot be moved freely, the direction of turn piece is in the wrong place. Move receiver module and turn the turn piece to the opposite direction. Install again and check the operation of bolt.
5. Connect exterior wire connector to interior wire connector.
6. Secure the receiver module to mounting plate with 3 screws.

● IMPORTANT:

1. Be careful about the wire. Do not block the screw holes at the time of mounting the screws.
2. Lock should be straight on door before tightening screws.



7. Install (4) AA alkaline batteries and fit battery cover.

Federal Communication Commission Interference Statement

This equipment has been tested and found to comply with the limits for a Class B digital device, pursuant to Part 15 of the FCC Rules. These limits are designed to provide reasonable protection against harmful interference in a residential installation.

This equipment generates, uses and can radiate radio frequency energy and, if not installed and used in accordance with the instructions, may cause harmful interference to radio communications. However, there is no guarantee that interference will not occur in a particular installation. If this equipment does cause harmful interference to radio or television reception, which can be determined by turning the equipment off and on, the user is encouraged to try to correct the interference by one of the following measures:

- . Reorient or relocate the receiving antenna.
- . Increase the separation between the equipment and receiver.
- . Connect the equipment into an outlet on a circuit different from that to which the receiver is connected.
- . Consult the dealer or an experienced radio/TV technician for help.

FCC Caution: To assure continued compliance, any changes or modifications not expressly approved by the party responsible for compliance could void the user's authority to operate this equipment. (Example - use only shielded interface cables when connecting to computer or peripheral devices).

FCC Radiation Exposure Statement

This equipment complies with FCC RF radiation exposure limits set forth for an uncontrolled environment. This equipment should be installed and operated with a minimum distance of 0.5 centimeters between the radiator and your body.

This transmitter must not be co-located or operating in conjunction with any other antenna or transmitter.

The antennas used for this transmitter must be installed to provide a separation distance of at least 0.5 cm from all persons and must not be co-located or operating in conjunction with any other antenna or transmitter.

This device complies with Part 15 of the FCC Rules. Operation is subject to the following two conditions:

- (1) This device may not cause harmful interference, and (2) This device must accept any interference received, including interference that may cause undesired operation.