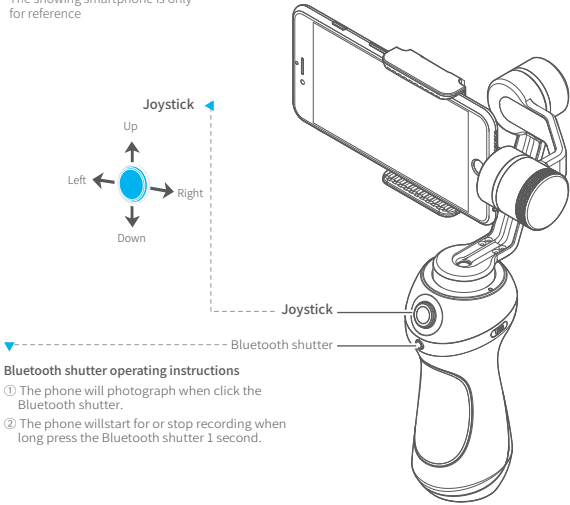


VIMBLE

VIMBLE.S

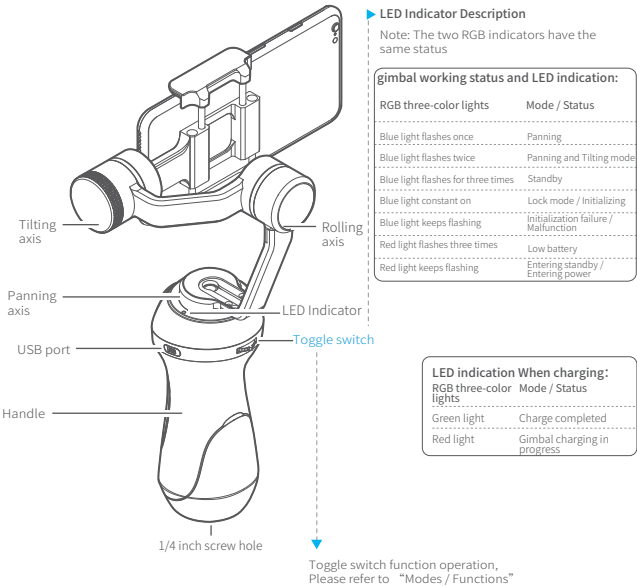
1. Product Overview

* The showing smartphone is only for reference



Bluetooth shutter operating instructions

- ① The phone will photograph when click the Bluetooth shutter.
- ② The phone will start for or stop recording when long press the Bluetooth shutter 1 second.

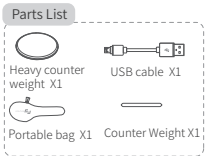


LED Indicator Description

Note: The two RGB indicators have the same status

gimbal working status and LED indication:	
RGB three-color lights	Mode / Status
Blue light flashes once	Panning
Blue light flashes twice	Panning and Tilting mode
Blue light flashes for three times	Standby
Blue light constant on	Lock mode / Initializing
Blue light keeps flashing	Initialization failure / Malfunction
Red light flashes three times	Low battery
Red light keeps flashing	Entering standby / Entering power

LED indication When charging: RGB three-color lights	
Mode / Status	lights
Charge completed	Green light
Gimbal charging in progress	Red light

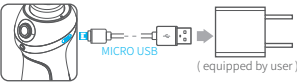


2. User Guide

Attention ! (1) Please install the smartphone before powering on the gimbal
(2) Please turn off the power when the gimbal is not in use, then remove the smartphone

1 Charging

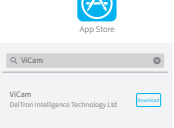
Please make sure the battery was fully charged before you power on the gimbal first time.
Charge with MICRO USB cable.
The indicator will light red in charging and light green when fully charged.



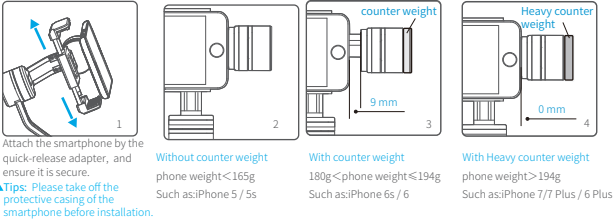
2 Download APP

Download ViCam and install it.

iOS version:

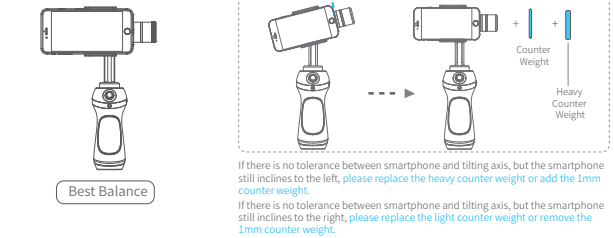


3 Install the phone



*If it is not balance when you finished the instructions as above, please take reference to step 4 to balance again.

4 Balance Adjustment



5 Power on / off

Power on: press the Toggle switch and bluetooth shutter at the same time until Green light, the gimbal start.

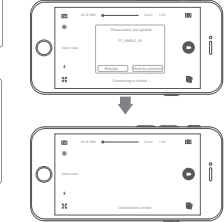
Power off: press the Toggle switch and Bluetooth shutter at the same time until Red light flashing to long light, the gimbal shutdown.

Attention: Turn the gimbal on after ensuring the iPhone is secure.

In case of low battery, the indicator will light red and flash 3 times every 5 seconds. Please charge VIMBLES or replace the battery.

6 Connecting APP

Start the app on your smartphone, follow the instructions to connect the smartphone with gimbal via Bluetooth.



3. Modes / Functions

Working Modes

Panning Mode

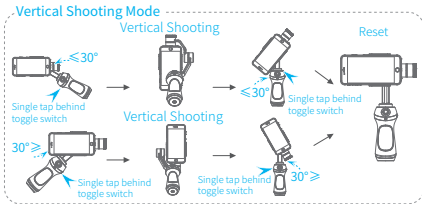
Hold the tilting and rolling direction of camera lens, camera lens will move along with handle moving.

Panning and Tilting Mode

Hold the rolling direction of camera lens, camera lens will move along with handle moving.

Lock Mode

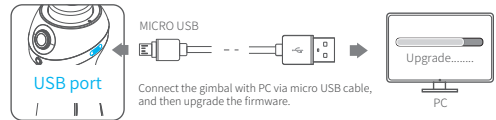
Hold the direction of camera lens.



Mode / Function Operation Instructions

Toggle switch Function Instructions	Modes / Functions	Explanation
Single tap	Panning Mode / Lock Mode	Single tap to switch between panning mode and lock mode
Double tap	Panning and Tilting Mode	Under panning and tilting mode, single tap to switch to lock mode
Triple tap	Rotate 180° in horizontal	Self-framing
Quadruple tap	Reset	Reset the tilting axis of the gimbal to initial orientation and initial mode
While long press the Toggle switch and Bluetooth shutter, the red light flash	Standby	Click again to wake-up the gimbal, and the Triple tap can be initialize the gimbal
Left and right toggle	Exposure, WB, Focus and Zoom Function parameter adjustment	Need to connect mobile phone APP

4. Firmware Upgrade

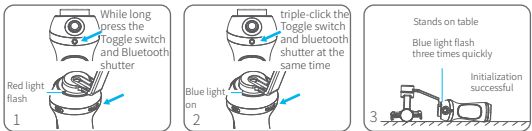


5. Gimbal initialization

You can initialize your gimbal when:

- (1) camera is not level
- (2) haven been used for long time
- (3) big variation of ambient temperature

Adjusting steps:



6. Parameters

Tilting Angle	320°	Tilting Increments	min 2°/s max 75°/s
Rolling Angle	320°	Panning Increments	min 3°/s max 150°/s
Panning Angle	360°	Usage time	7 Hours
Adaption	iPhone series / HUAWEI P9 / HUAWEI P9 Plus / Mi 5 / MEIZU MX6 / SAMSUNG NOTE 5 / S7 or other smartphones with the similar dimensions		
Weight	438g (not including smartphone)		

DISCLAIMER

Prohibit any user for any illegal purpose. Users will be responsible for all behaviors of purchase and use products.

The Company assumes no liability for any risks related to or resulting from the debug and use of this product (including the direct, indirect or third-party losses).

For any unknown sources of using, we will not be at any services.

The updating and changes of product firmware and program may cause changes in function descriptions in this user manual, please read the instructions carefully before upgrading the firmware and use the corresponding user manual.

You can get the latest user manual from the official website: www.vimbles.com

DelTron Intelligence reserves the right to amend this manual and the terms and conditions of use the product at any time.

Attention

- Please correctly assemble the gimbal in accordance with the diagram.
- Please install the iPhone before powering on the gimbal.
- When the gimbal is not in use or placed on the table, please ensure it is powered off.

For more information, please visit our official website: www.vimbles.com

Support Email: customerservice@vimbles.com

This product is due to follow-up hardware and software updates may occur description of the introduction does not match the actual product features. You can get the latest user manual from the official website.

FCC STATEMENT :

This device complies with Part 15 of the FCC Rules. Operation is subject to the following two conditions:

- (1) This device may not cause harmful interference, and
- (2) This device must accept any interference received, including interference that may cause undesired operation.

Warning: Changes or modifications not expressly approved by the party responsible for compliance could void the user's authority to operate the equipment.

NOTE: This equipment has been tested and found to comply with the limits for a Class B digital device, pursuant to Part 15 of the FCC Rules. These limits are designed to provide reasonable protection against harmful interference in a residential installation.

This equipment generates uses and can radiate radio frequency energy and, if not installed and used in accordance with the instructions, may cause harmful interference to radio communications. However, there is no guarantee that interference will not occur in a particular installation. If this equipment does cause harmful interference to radio or television reception, which can be determined by turning the equipment off and on, the user is encouraged to try to correct the interference by one or more of the following measures:

- Reorient or relocate the receiving antenna.

- Increase the separation between the equipment and receiver.

- Connect the equipment into an outlet on a circuit different from that to which the receiver is connected.

- Consult the dealer or an experienced radio/TV technician for help.

RF warning statement:

The device has been evaluated to meet general RF exposure requirement. The device can be used in portable exposure condition without restriction.