

MG_{v2}

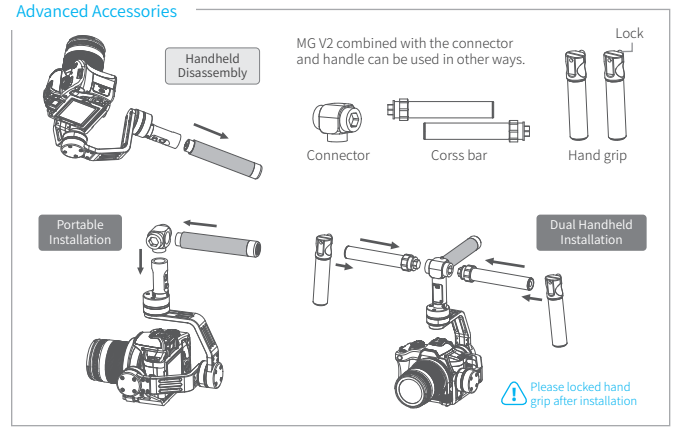
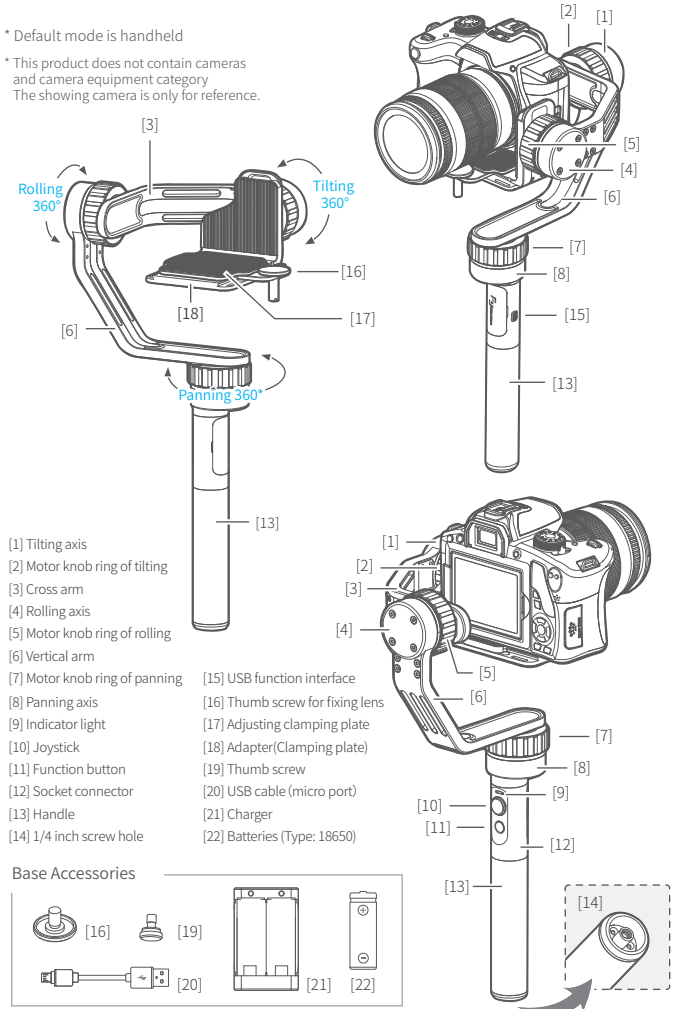
3-Axis Gimbal for Mirrorless Camera

1. Product Overview

MG V2 is one kind of 3-axis handheld gimbal especially for mirrorless cameras. Simple and clean design integrated strong operation function, easy to switch among more using ways. Panning / Tilting / Rolling 3-axis 360 degrees coverage, giving you ultimate experience while using the MG V2 for shooting.

* Default mode is handheld

* This product does not contain cameras and camera equipment category
The showing camera is only for reference.



GuiLin FeiYu Technology Incorporated Company

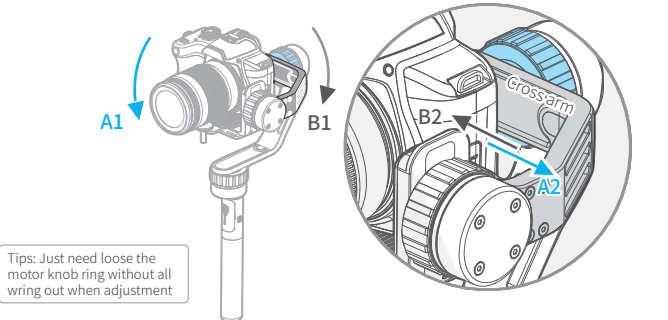
STEP 2 Balance adjustment of the rolling axis

Adjust the center of gravity of the camera's horizon position in rolling axis, after the adjustment of the center of gravity in tilting axis.

- Fix rolling position manually and keep the camera at the horizon level, leave hold of it and observe the camera status.
- If the camera leans to left or right, then loosen the motor knob ring (shown at bellow), and adjust the cross arm to the opposite position of the cross arm, until the camera keep the current position after adjustment.

As shown, if the camera is tilted toward A1, move the cross arm to A2 direction, if tilted toward B1, move the cross arm to B2 direction.

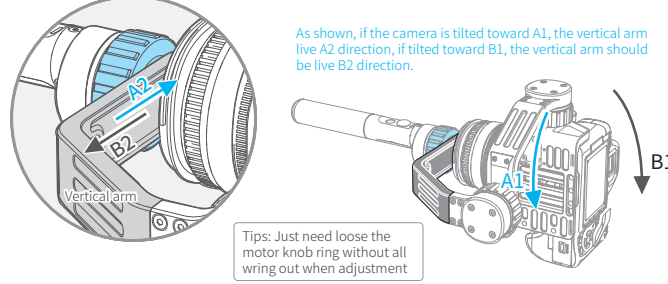
- Be sure to tighten the motor knob ring after the adjustment (shown at bellow).



STEP 3 Balance adjustment of the panning axis

Adjust balance of the panning after the balance adjustment of the tilting and rolling.

- Keep the socket connector of the gimbal parallel to the ground, refer the right picture:leave hold of it and observe the camera status.
- If the camera leaning left or right, loosen the Motor knob ring (shown at bellow), adjust the vertical arm to leaning opposite direction,until the camera keep the current position after adjustment.
- Be sure to tighten the Motor knob ring after the adjustment (shown at bellow).



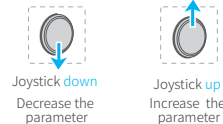
STEP 4 Camera adaptation parameter adjustment

After finishing the stabilizer balance adjustment, turn on the gimbal for a testing, please refer to point 5 in "Installation" chapter.

If there is a slight vibration happen on the panning / rolling / tilting axis after power on the gimbal, it means the adaptation parameters needs to be adjusted.

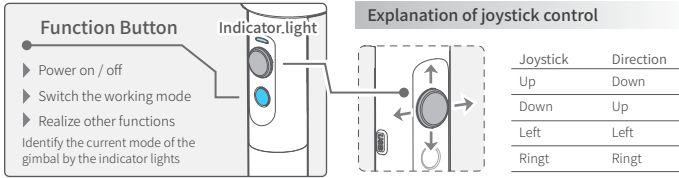
Steps:

- After power on, You can adjust the adaptation parameter of the corresponding axis while operation the function corresponding keys (as shown below). the led will keep flashing in the adjust mode.
- If the panning axis / rolling roll / tilting axis from side to side, then move up the joystick to increase the adaptation parameter.
- If the motor has felt the feeling of holding the handle, then move down the joystick to decrease the adaptation parameter.
- After the shock rocker disappeared please release button and click Save function parameters.



Function Button	Adjusted Axis
Tap button for five times	adjust for panning axis
Tap button for six times	adjust for rolling axis
Tap button for seven times	adjust for tilting axis

4. Operation



LED status	Mode / Status
Blue light flashes once	Panning mode
Blue light flashes twice	Panning and Tilting mode
Blue light flashes for three times	Standby
Blue light constant on	Lock mode / Initialize the gimbal
Blue light keeps flashing	Initialization failure / Malfunction
Red light flashes three times	Low battery (please charge or change the batteries)
Red light keeps flashing	Entering standby / Entering power off

Operation	Function	Explanation
Single tap	Panning mode / Lock mode	Single tap to switch between panning mode and lock mode
Double tap	Panning and Tilting mode	Under panning and tilting mode, single tap to switch to lock mode
Triple tap	Rotate 180° in horizontal	Make the camera lens rotate 180°
Quadruple tap	Reset	Reset the tilting axis of the gimbal to initial orientation and initial mode
Long press for 1 second	Standby	Single tap again to awake the gimbal, or triple tap to initialize the gimbal
Long press for 3 seconds	Power off	

Working Modes

Panning Mode

The camera can move to left or right smoothly along with the handheld moving. The tilting and rolling directions fixed.

* Boot default mode: Panning mode

Panning and Tilting Mode

The camera can move to left or right and tilt up and down smoothly along with the handheld moving. The rolling directions fixed.

Lock Mode

The camera stays in its current orientation. The panning, tilting and rolling direction are all fixed.

Other Functions

Reset

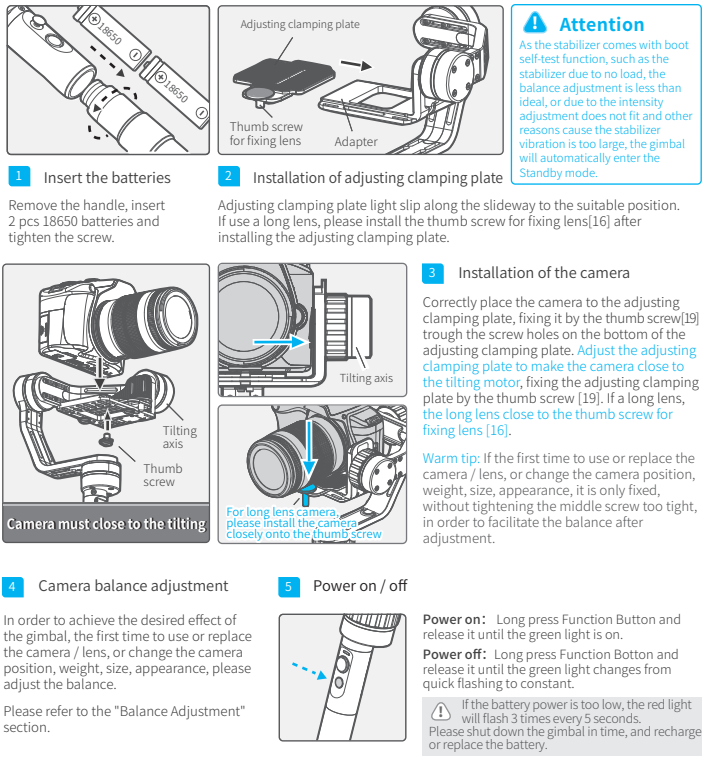
Reset the tilting axis of the gimbal to initial orientation and initial mode.

Standby

In standby model, keep the gimbal in power-up state, the motor stops working, the indicator light flashes for three times, and single tap again to wake the gimbal.

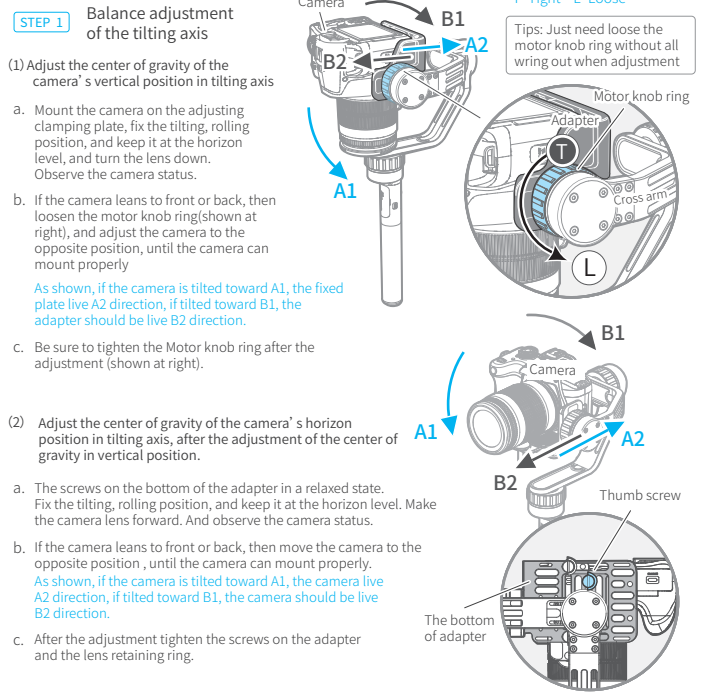
2. Installation

Attention: Please complete the following instructions before power on the gimbal



3. Balance Adjustment

- Please mount the adjusting clamping plate, camera lens, memory card, etc. and then remove the lens cover before the balance adjustment.
- Simply loosen the Motor knob ring, the adapter or cross arm or vertical arm to move without all wring out.



5. Gimbal Horizontal Angle Adjustment (Initialize the gimbal)

The horizontal angle needs to be adjusted whenever the following situations happen to the gimbal:

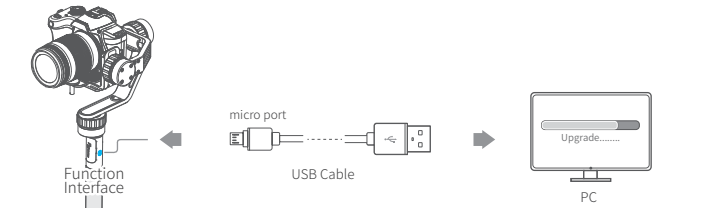
- The tilt angle is not leveled with the horizontal surface.
- The roll angle is not parallel to the horizontal surface.
- Under lock mode, the panning angle drifts.

Adjusting steps:

- In boot-up state, long press the Function Button until the red light flashes quickly to enter standby status, the blue light will flash 3 times periodically.
- Lay the gimbal on a static flat surface and triple tap the Function Button. Initialization is successful when the blue light changes from constant on to flashing 3 times periodically.

When the initialization failed, the LED indicator will flash quickly, repeat step (2) to reinitialize.

6. Firmware Upgrade

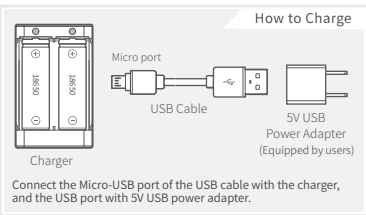


Upgrade steps

- Please visit the official website www.feiyu-tech.com to download the relevant programs for upgrading, including USB drive program, firmware upgrade software and product firmware, and install the relevant software, decompress the firmware files for standby application.
- Connect the USB cable with micro port as the above picture.
- Please upgrade the relevant firmware according to the operation instructions of firmware upgrade software.

7. Parameters

Tilting / Rolling / Panning	360°
Tilting Increments	2°/s ~ 75°/s
Panning Increments	3°/s ~ 150°/s
Usage Time	6 Hours
Adaption	Sony NEX-SN/NEX-T and other N-series, SONY A7RII / ILCE-TR / ILCE-5100, Panasonic LUMIX GH4, Canon 5D Mark III (with standard lens), and other cameras with similar dimensions with weight less 1630g (The camera weight including the accessories of lens and ect.)
Weight	887g (Not including the accessories of batteries, camera, camera lens and ect.)



Package List

Product model	Quantity	Product model	Quantity
MG V2 gimbal	1	Corss bar	2
Handle	1	Hand grip	2
Adjusting clamping plate	1	USB cable (micro port)	1
Thumb screw for fixing lens	1	Charger	1
Thumb screw	3	Batteries (Type:18650)	4
Connector	1	User manual	1
		Warranty card	1

DISCLAIMER

Prohibit any user for any illegal purpose. Users will be responsible for all behaviors of purchase and use products.

The Company assumes no liability for any risks related to or resulting from the debug and use of this product (including the direct, indirect or third-party losses). For any unknown sources of using, we will not be at any services.

You can get the latest user manual from the official website: www.feiyu-tech.com
Feiyu Tech reserves the right to amend this manual and the terms and conditions of use the gimbal at any time.

ATTENTION

- Please correctly assemble the gimbal in accordance with the diagram.
- Please install the camera, complete the installation and balance adjustment before power on the gimbal.
- Please charge the battery with the standard charger.
- When the gimbal is not in use or placed on the table, please ensure it is powered off.



Please visit the official website of Feiyu Tech to get related information: www.feiyu-tech.com
Support email: service@feiyu-tech.com

This device complies with Part 15 of the FCC Rules. Operation is subject to the following two conditions: (1) this device may not cause harmful interference, and (2) this device must accept any interference received, including interference that may cause undesired operation.

Changes or modifications not expressly approved by the party responsible for compliance could void the user's authority to operate the equipment.

NOTE: This equipment has been tested and found to comply with the limits for a Class B digital device, pursuant to Part 15 of the FCC Rules. These limits are designed to provide reasonable protection against harmful interference in a residential installation. This equipment generates, uses instructions, may cause harmful interference to radio communications. However, there is no guarantee that interference will not occur in a particular installation. If this equipment does cause harmful interference to radio or television reception, which can be determined by turning the equipment off and on, the user is encouraged to try to correct the interference by one or more of the following measures:

- Reorient or relocate the receiving antenna.
- Increase the separation between the equipment and receiver.
- Connect the equipment into an outlet on a circuit different from that to which the receiver is connected.
- Consult the dealer or an experienced radio/TV technician for help.