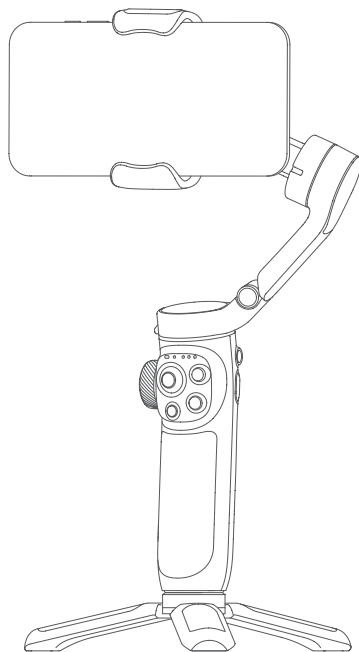




VB4SE

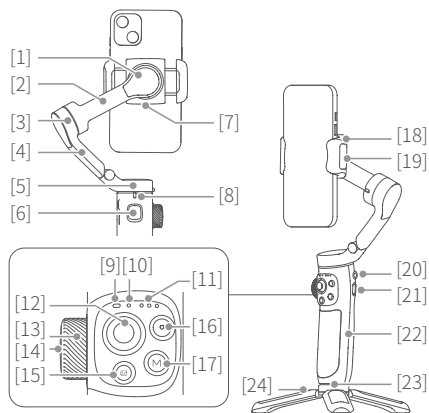
Quick Start Guide

EN V1.0



Quick Start Guide

1. Overview

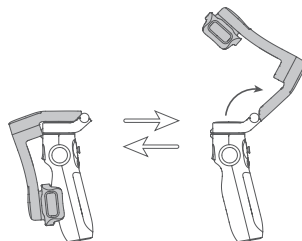


- | | |
|--------------------------------|-------------------------------------|
| [1] Roll axis | [14] Dial function switching button |
| [2] Cross arm | [15] Album button |
| [3] Tilt axis | [16] Shutter button |
| [4] Vertical arm | [17] M button |
| [5] Pan axis | (custom functions in App) |
| [6] Trigger button | [18] Smartphone holder |
| (custom functions in App) | [19] Magnetizable nameplate |
| [7] USB-C port for accessories | [20] Power button/ |
| [8] Limitation | Mode button |
| [9] Status/Battery indicator | [21] USB-C port |
| [10] Bluetooth indicator | [22] Handle (built-in battery) |
| [11] Mode indicator | [23] 1/4 inch thread hole |
| [12] Joystick | [24] Tripod |
| [13] Dial | |

* This product dose NOT include smartphone.

2. Quick Experience

Step 1: Unfold and fold

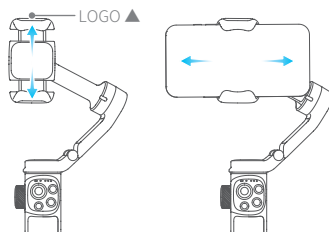


Step 2: Smartphone Installation

It is recommended to remove the smartphone case before installation.

Keep the logo of the smartphone holder upward. Keep the smartphone holder in center.

If the smartphone tilted, please move the smartphone left or right to make it horizontal.

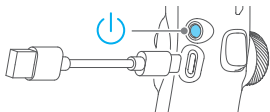


Step 3: Power ON/OFF/Standby

It is recommended to install your smartphone and balance gimbal before power on the gimbal.

Power ON/OFF: Long press the power button and release it when you hear the tone.

Enter standby mode: Triple tap the power button to enter standby mode. Tap again to wake up.



3. Charging

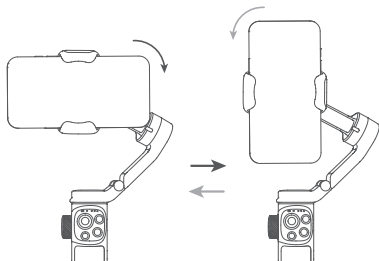
Please fully charge the battery before power on the gimbal for the first time.

Connect the USB-C cable to charge. The indicator light is yellow while charging, and turn green after charging complete.

4. Landscape & Portrait Mode Switching

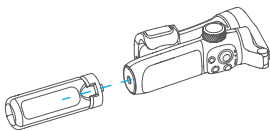
Double click the mode button or manually rotate the smartphone holder to switch between landscape and portrait mode.

Do not make anti-clockwise rotation in landscape mode, Do not make clockwise rotation in portrait mode.



5. Tripod

The tripod is attached to the bottom of the gimbal in a rotating manner. According to the needs of shooting, choose whether to install it.



6. Connection

6.1 Bluetooth Connection

Turn on the gimbal.

Method one: Download and install Feiyu ON App, run the App, follow the prompts to turn on and connect with the Bluetooth.

Method two: Turn on the smartphone Bluetooth, connect the gimbal Bluetooth in the setting of phone, e.g. FY_VB4_XX.

If fail to find the Bluetooth:

Method one: Shut down the App in the background.

Method two: Move downward the joystick and triple tap the power button at the same time to reset the Bluetooth connection of gimbal. (And the Bluetooth can only be reconnected after reboot the gimbal)

6.2 App Connection

Download the Feiyu ON App

Scan the QR code to download the app, or search for "Feiyu ON" in the App Store or Google Play.

* Requires iOS 9.0 or above, Android 6.0 or above.




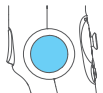

iOS

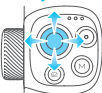



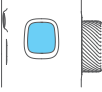


Android

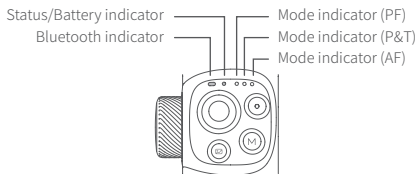
7. Common Operation

- ① [Basic] : VB 4SE can achieve those functions after balanced gimbal.
- ② [Bluetooth] : New available function which achieved after connected smartphone via Bluetooth with the functions in condition ① still available.
- ③ [APP] : New available function which achieved via Feiyu ON App with the functions in condition ① , ② still available.

Button	Condition	Function
	Basic	Power off: <ul style="list-style-type: none"> □ Long press: power on • Single tap: check battery level (while charging)
	APP	Power on: <ul style="list-style-type: none"> □ Long press: power off • Double tap: landscape and portrait mode switching □ Triple tap: enter standby mode (tap again to wake up)
	Basic	Control smartphone: <ul style="list-style-type: none"> • Single tap: switch between front and rear cameras * Support to switch to dual-view and pic-in-pic cameras for some smartphones
	APP	Control App: <ul style="list-style-type: none"> • Single tap: enter/quit shortcut menu in App
	Basic	Switch the control object of dial: • Single tap (tone: beep): When control zoom/focus: switch the control object of dial between <u>zoom/focus (default)</u> , cyclically When control axes: switch the control object of dial among <u>tilt/pan/roll (default)</u> axis, cyclically
	APP	<ul style="list-style-type: none"> □ Long press (tone: beep beep): switch the dial between <u>control axes/control focus and zoom (default)</u> □ Rotate: When control zoom/focus: switch the control object of dial between <u>zoom/focus (default)</u>, cyclically When control axes: control the movement of the <u>roll (default)/tilt/pan axis</u>

Button	Condition	Function
	Basic	Control the movement of the tilt and pan axes.
	APP	□ Select setting option □ After enter album: move to left to choose previous photo/video; move to right to choose next photo/video; move upward to play/pause; move downward to play/pause
	Bluetooth	When original camera App is in photo/video mode:
	APP	• Single tap: take photo, start/stop recording □ Press halfway: focus • Single tap: take photo, start/stop recording □ Long press: switch between photo/video
	Basic	• Single tap: switch among <u>pan follow/ all follow/follow mode (default)</u> , cyclically
	APP	Customize the function of single tap
	APP	Single tap: enter/exit album
	Basic	□ Long press: enter flash mode (release it to exit) • Single tap: Start AI face tracking • Double tap: recenter □ Triple tap: enter/exit selfie mode (pan axis turn 180°)
	APP	Customize the function of single tap/long press

8. Indicator



8.1 Status/Battery indicator

Charging:

Status/Battery indicator	Descriptions
Green light stays on	Charging completed
Yellow light stays on	Fully charged or high level of battery
Yellow light keeps flashing twice	Medium level of battery
Yellow light keeps flashing three times	Low power, need recharging
Breathing light (yellow)	Standby mode

Not charging:

Status/Battery indicator	Descriptions
Green light turn blue And the mode indicators turn on in turn (white)	Powering on
Blue light keeps flashing once	Initializing
Blue light keeps flashing three times	Initialization complete/ Low power, need recharging
Breathing light (green)	Standby mode
Constant Blue light	Fully charged or high level of battery
Blue light keeps flashing twice	Medium level of battery

Status/Battery indicator	Descriptions
Flashes green and red alternately	Updating
Green light stays on	Update complete
Red light keeps flashing And the mode indicators keep flashing quickly (white)	Malfunction warning (check in App)
Blue light keeps flashing quickly until turn off	Will auto power off
Red light keeps flashing quickly until turn off	Powering off

8.2 Bluetooth indicator

Bluetooth indicator	Descriptions
Constant Blue light	Bluetooth connected
Blue light flash	Bluetooth disconnected
Blue light keeps flashing	Reset Bluetooth connection of gimbal

8.3 Mode indicator

Mode indicator	Descriptions
White lights turn on in turn then grow solid white And the green status indicator turns blue	Powering on
PF solid white	Pan follow
P&T solid white	Follow mode (default)
AF solid white	All follow mode
AF white light flashing	Lock mode
All the white lights flashing quickly And the status indicators keep flashing quickly (red)	Malfunction warning (check in App)

9. Specifications

Product name: Feiyu VB 4SE 3-Axis Handheld Gimbal for Smartphone

Product model: FeiyuVB4SE

Max. Tilt Range: -35° ~ +35°

Max. Roll Range: -50° ~ +50°

Max. Pan Range: -80° ~ +174°

Size: About 98.5×154×64mm (folded)

Net gimbal Weight: About 315g (not including tripod)

Battery: 1300mAh

Charging time: About 2.5h

Battery Life: About 8h (test in lab environment with 260g load)

Payload Capability: ≤ 260g (after balanced)

Adapter smartphones: iPhone & Android phones (the width of the phone ≤ 88mm)

Packing list:

Main body×1, Tripod×1, USB-C cable×1,

Portable bag×1, Manual×1

Notice:

1. Make sure motor spinning is not blocked by external force when the product is power on.
2. The product DO NOT contact water or other liquid if the product is not mark waterproof or splash-proof. Waterproof and splash-proof product DO NOT contact sea water or other corrosive liquid.
3. DO NOT disassembly the product except marked detachable. It need send to FeiyuTech after-sales or authorized service center to fix it if you accidently disassembly and cause abnormal work. The relevant costs are borne by user.
4. Prolonged continuous operation may cause the product surface temperature to rise, please operate carefully.
5. DO NOT drop or strike the product. If the product is abnormal, contact FeiyuTech after-sales support.

Storage and Maintenance:

1. Keep the product out of the reach of children and pets.
2. DO NOT leave the product near heat sources such as a furnace or heater. DO NOT leave the product inside of a vehicle on hot days.
3. Please storage the product in dry environment.
4. DO NOT overcharge or overuse the battery, otherwise it will cause damage to the battery core.
5. Never use the product when the temperature is too high or too low.

FCC regulatory conformance:

This device complies with Part 15 of the FCC Rules. Operation is subject to the following two conditions:

- (1) This device may not cause harmful interference
- (2) This device must accept any interference received, including interference that may cause undesired operation.

NOTE

This equipment has been tested and found to comply with the limits for a Class B digital device, pursuant to part 15 of the FCC Rules. These limits are designed to provide reasonable protection against harmful interference in a residential installation.

This equipment generates and can radiate radio frequency energy and, if not installed and used in accordance with the instructions, may cause harmful interference to radio communications. However, there is no guarantee that interference will not occur in a particular installation. If this equipment does cause harmful interference to radio or television reception, which can be determined by turning the equipment off and on, the user is encouraged to try to correct the interference by one or more of the following measures:

- Reorient or relocate the receiving antenna
- Increase the separation between the equipment and receiver
- Connect the equipment into an outlet on a circuit different from that to which the receiver is connected.
- Consult the dealer or an experienced radio/TV technician for help.

NOTE

The manufacturer is not responsible for any radio or TV interference caused by unauthorized modifications to this equipment. Such modifications could void the user's authority to operate the equipment.

RF Exposure

This equipment complies with FCC radiation exposure limits set forth for an uncontrolled environment.

NCC警語

取得審驗證明之低功率射頻器材，非經核准，公司、商號或使用者均不得擅自變更頻率、加大功率或變更原設計之特性及功能。低功率射頻器材之使用不得影響飛航安全及干擾合法通信；經發現有干擾現象時，應立即停用，並改善至無干擾時方得繼續使用。前述合法通信，指依電信管理法規定作業之無線電通信。低功率射頻器材須忍受合法通信或工業、科學及醫療用電波輻射性電機設備之干擾。