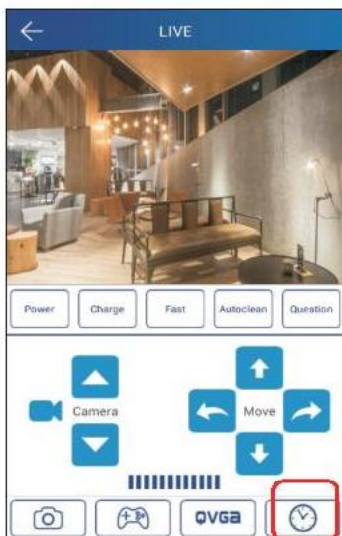


## 5. Cleaning Appointment

Click the clock in the lower-right corner to enter into cleaning schedule mode.



After entering into cleaning appointment interface, click ▲▼ to set hour and minute; click 日 一 二 三 四 五 六 to set day.(same time in a whole week can be scheduled)

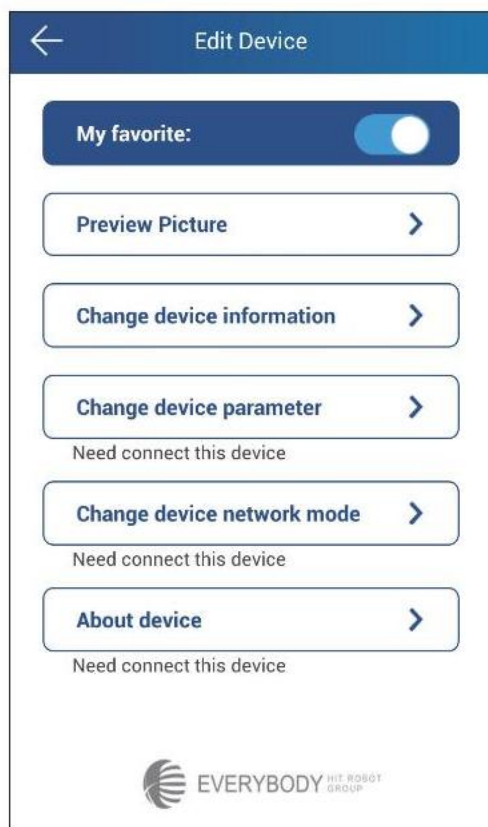
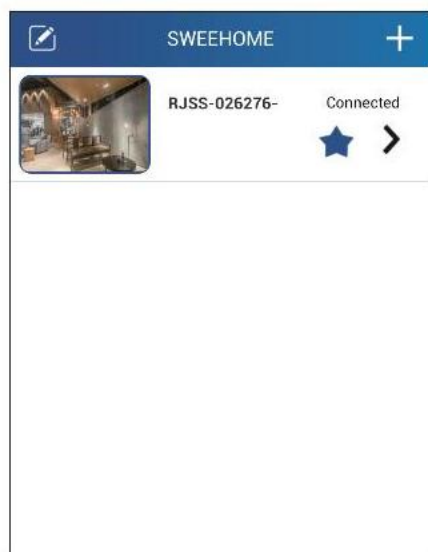


After successful appointment, click 📅 in the upper-right corner to preserve the setting. After preserving the setting, "Successful Appointment" will be displayed.



## 6. Device Editing Interface

Click the arrow region “connected” to enter into the interface of editing parameters (as shown on the right).



- ◆ **My favorite:** the open switch in blue shows following this device. And each time starting this App will enter the real-time video image. The close switch shows not following this device. App can only follow one device.
- ◆ **Preview Picture:** screenshots will be stored in this directory for viewing.
- ◆ **Change device information:** can change the device information.
- ◆ **Change device parameter:** can change the brightness and contrast.
- ◆ **Change device network mode:** can switch the network mode in WIFI or AP.
- ◆ **About device:** show the device information of firmware version, network mode and SSID.

**A ) Preview picture:**

Click “ preview picture ” button to enter the image file lists, select the file to view.



**B ) Change device information:**

In connected condition, modify the “ Name ” according to the picture below. For the password modification, click the button “ synchronize to the remote device ” to enter the old password and new password of 8 digits (the default password is 88888888). And then click the top right button to save it.

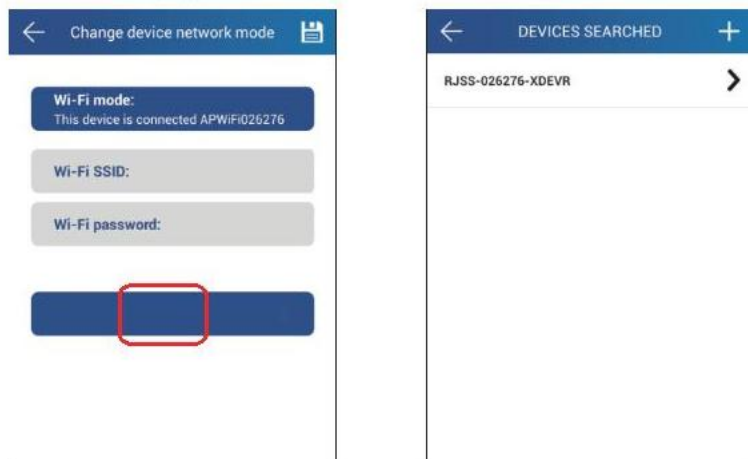
**C ) Change device parameter:**

According to the actual requirement to adjust the brightness and contrast of the video interface .

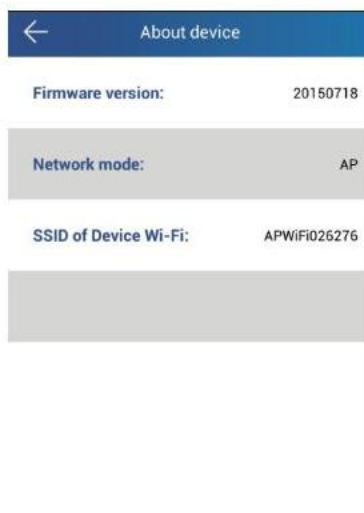
D : Change device network mode:

Click “ change device network mode ” (shown on the left below). The current interface displays the connected network APWiFi026276. Slide the button to switch the network mode. Click WiFi which need to be connected and enter the WiFi password, then click the top right button to synchronize to device ends, remote control will be realized using WiFi network mode .

Connect with different routers by switching IOS device in WI-FI mode. Click “ choose SSID ” to enter into WIFI selection interface. Choose new router and connect, back to the left interface to input password. Click top right button to synchronize to device ends.

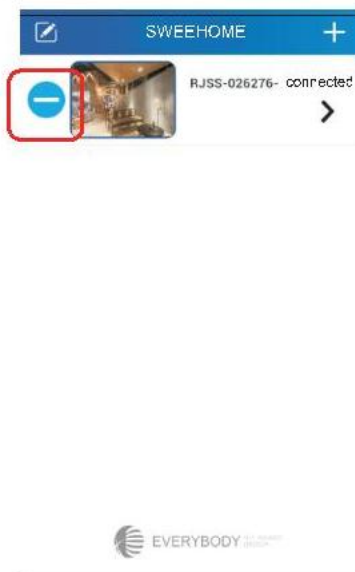
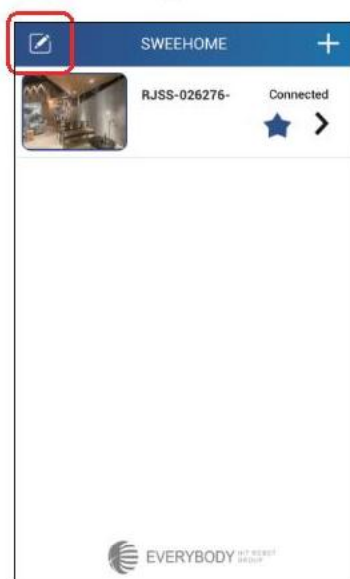



E : Check device information interface:  
Click “ About device ” button to check the device information.



## 6. Remove device

In the device list interface, Click the top left "editing" button to enter into the interface of device-deleting. Click the left "deleting button" of the list, device is in the deleting state. Click the top left "editing" button to exit the editing condition.



When the device is in the deleting condition, click the  button to exit the deleting condition. Click "Delete" to delete the device.



## Caution:

This device complies with Part 15 of the FCC rules and Industry Canada license-exempt RSS standard(s). Operation is subject to the following two conditions: (1) this device may not cause harmful interference, and (2) this device must accept any interference received, including interference that may cause undesired operation.

The manufacturer is not responsible for any radio or TV interference caused by unauthorized modifications or change to this equipment. Such modifications or change could void the user's authority to operate the equipment.

This radio transmitter (identify the device by certification number or model number if Category II) has been approved by Industry Canada to operate with the antenna types listed below with the maximum permissible gain indicated. Antenna types not included in this list, having a gain greater than the maximum gain indicated for that type, are strictly prohibited for use with this device.

This equipment has been tested and found to comply with the limits for a Class B digital device, pursuant to part 15 of the FCC Rules. These limits are designed to provide reasonable protection against harmful interference in a residential installation. This equipment generates, uses and can radiate radio frequency energy and, if not installed and used in accordance with the instructions, may cause harmful interference to radio communications. However, there is no guarantee that interference will not occur in a particular installation. If this equipment does cause harmful interference to radio or television reception, which can be determined by turning the equipment off and on, the user is encouraged to try to correct the interference by one or more of the following measures:

- Reorient or relocate the receiving antenna.
- Increase the separation between the equipment and receiver.
- Connect the equipment into an outlet on a circuit different from that to which the receiver is connected.
- Consult the dealer or an experienced radio/TV technician for help.

The device has been evaluated to meet general RF exposure requirement.

To maintain compliance with FCC's RF exposure guidelines, this equipment should be installed and operated with a minimum distance of 20cm between the radiator and your body.