

# 420x298mm

## Super Quick Start!

Cayla will talk to you about her accessories!

### 1 INSTALL BATTERIES

Unscrew the battery door  
Install 3 x AA batteries  
(Batteries not included)  
Replace the battery door

### 2 Select English language

ENG SP

### 3 Move switch to LP

OFF LP BT

## Quick Start to connect to a smart device

### 1 CHOOSE

Which kind of smart device you will be using with CAYLA

Apple® device



OR



Android™ device\*

\*Please make sure your Android™ smart device support Bluetooth® headset protocol.

### 2 GO TO

[www.myfriendcayla.com/instructions](http://www.myfriendcayla.com/instructions)  
for full video instructions.

### 3 INSTALL



Search for "My Friend Cayla" APP  
on the APP market place of your device.  
Download the APP onto your chosen smart device.

If you are using  
Apple® device  
search on



If you are using  
ANDROID™ device  
search on



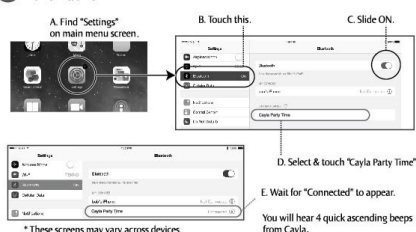
### 4 SWITCH

Switch to BT (Bluetooth mode) LP BT



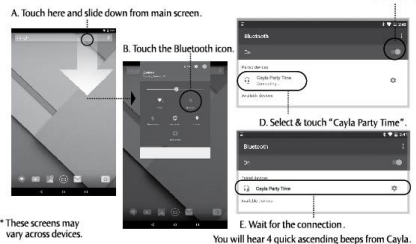
### 5 PAIR

iOS Device



\* These screens may vary across devices.

Android™ Device



\* These screens may vary across devices.

### 6 LAUNCH

This icon indicates the internet is connected.



Press **Hello!**  
to start Cayla talking.

OR  
press the hand icon  
and place an accessory  
in her hand.



Talk to her when her  
charm light goes on  
CAYLA listens to you when  
her charm lights up.

OR  
To ask her a question like:  
"How are you today?"  
press **to start**  
and **to pause** \*



\* Do not place any accessories in her  
hand when you ask her question.

#### Battery Warnings:

Important! Only adults should replace batteries.

Alkaline batteries are recommended.  
Rechargeable batteries must only be charged under adult supervision.  
Rechargeable batteries must be removed from the toy before recharging.  
Non-rechargeable batteries are not to be recharged.

Do not mix old and new batteries.  
Do not mix alkaline, standard (carbon-zinc), or rechargeable  
(nickel-cadmium) batteries.

Only batteries of the same or equivalent type as recommended are to be  
used.

Batteries are to be inserted with the correct polarity.  
Exhausted batteries are to be removed from the toy.  
The supply terminals are not to be short-circuited.  
Please keep this information for future reference.  
Remove batteries from the product before extended storage.

## Some questions you can ask Cayla

You can ask Cayla millions of things. But to help you get started here  
are some good examples you can ask her:

What's your name?  
Tell me something about yourself.  
What's your favorite color?  
Tell me about your sister.  
What's the capital of France?  
Who is Mona Lisa?  
How deep is the ocean?  
You look beautiful.  
You're so smart.  
What's the name of your father?  
Where is the Eiffel Tower?  
Night night.  
Do you feed your dog?  
What's your favorite pizza?  
Are you afraid of the dark?  
What's for dinner?  
Do you eat vegetables?

What's your favorite season?  
Are you hungry?  
What's your favorite movie?  
Who is Cinderella?  
Spell Hippopotamus.  
What's the population of Spain?  
Do you want to go outside?  
Do you like to draw?  
Have you seen a ballet?  
Am I your friend?  
Do you like the color orange?  
What's 26 plus 17?  
How much is 13 times 5?  
What's the weather?  
Where is Australia?  
Who is Mickey Mouse?  
Tell me a story.  
What is a Rhinoceros?

## What can I do with Cayla?

Games	Story Time	Photo Albums
Play games with Cayla like TIC-TAC-TOE (included)	Cayla has lots of stories to tell. Choose a story for Cayla to read to you. Follow along and look at the pictures.	Select a photo album. Scroll through the pictures to hear Cayla tell you about the places she's been to.

You can talk with Cayla even without using online voice recognition.

#### Here's how:



Go to [www.myfriendcayla.com/instructions](http://www.myfriendcayla.com/instructions)

## Useful information:

### Do I need an internet connection to play with Cayla?

Yes and No. Some functions, such as searching for information on the internet (famous people, places, things, weather, etc), require an internet connection. However much of the interaction between the child and the doll can be done OFFLINE including some conversations, playing games, reading stories, and exploring Cayla's photo album. She can also talk about her accessories without ANY connection to a smart device

### Can I run Cayla's app and another app at the same time?

If your operating system allows you to. Cayla's app works no differently than any other app you would have on your smart device.

### Does Cayla speak different languages?

Yes, you can play to download alternative versions of the app to play with Cayla in different languages. Please note you can only run one version of the app at a time.

### How is Cayla's internet safe?

Cayla's software system, VIOLET™, prevents any conversations involving nasty words or inappropriate topics. In addition to this, no website links or images will appear on the smart device and there can be no "data mining" of personal information. Any word or phrase can be blocked manually, too.

### For best performance make sure to:

- Turn off other active apps in your smart device.
- Play with the doll in a quiet environment. Noises will affect her ability to hear correctly.
- Connect your smart device to a fast and stable internet network.
- Be about 12 inches (30 cm) away from the front of the doll and facing directly toward her.
- Talk when white necklace lights up, listen and wait when it is not lit.
- Speak clearly so the doll can understand you.
- If she doesn't hear you, speak louder or more slowly or move closer and try again.
- Update your iOS and Android™ OS to the latest version.

## Troubleshooting

Problem	Possible Cause	Recommendation
No beep sound is heard when Cayla is turned on (Bluetooth® mode)	a) Bluetooth® connectivity is not enabled on the smart device. b) Batteries need replacing.	a) Ensure Bluetooth® connectivity is turned on before switching on Cayla. b) Insert new batteries.
My smart device can't find Cayla when its Bluetooth® connectivity is turned on.	a) The smart device is too far away from Cayla. b) Interference from appliances such as microwaves & WiFi routers.	a) Move the device closer to Cayla and retry making the connection. b) Move the smart device and Cayla away from other appliances and retry.
My smart device can't pair with Cayla when its Bluetooth® connectivity is turned on.	a) Cayla's batteries are running low. b) Attempting to pair multiple Caylas to the same device. c) Cayla is paired with another device.	a) Replace batteries. b) Switch off the other Cayla and retry. c) Switch off the other device(s) and retry.
Cayla is paired to a device and the device is connected to the internet but she doesn't respond to questions.	a) There could be a problem with the internet connection or speed. b) You may be talking while Cayla isn't listening. Talk only when her necklace is lit. c) Cayla is 'thinking'.	a) Check the strength of the internet connection. Cayla will work using 3G or 4G, but WiFi is recommended. b) Wait until the charm on Cayla's necklace is lit before talking to her. When the light is off Cayla is 'thinking'. c) Speak slowly and clearly.
When Cayla is paired with a smart phone, the phone rings and can be heard on Cayla.	Cayla will act as a Bluetooth® speaker when paired with a smart device.	Activate the phones "DO NOT DISTURB" feature during play with Cayla.
When Cayla is paired with a smart device, sounds from other apps can be heard.	Cayla will act as a Bluetooth® speaker when paired with a smart device.	Close or hibernate other apps on the smart device during play with Cayla.
Cayla doesn't understand my question.	a) The question wasn't asked clearly. b) Too much background noise. c) Something is blocking the microphone in Cayla's chest. d) You're too far away from Cayla.	a) Speak slowly and clearly. b) Take Cayla to a quieter place. c) If Cayla is wearing an outfit other than the one she came dressed in make sure the fabric isn't too thick. d) Move closer and retry.
Cayla answered a question incorrectly.	a) Cayla looks on the internet for the answers to many questions and she cannot tell if the information is correct. b) Cayla may have misheard the question.	a) Parental guidance recommended. b) Try asking the question again.
I hear a beep every 20 seconds. What is this?	Cayla's batteries are low.	Replace with 3 x AA batteries as soon as possible.

## Go to [www.myfriendcayla.com/instructions](http://www.myfriendcayla.com/instructions)

Find the video of your language there and play it.  
You'll see step-by-step how to get her set up,  
get her Bluetooth® connectivity running, and interact with her.

For further questions, please refer to the 'support' section on our website  
[www.myfriendcayla.com/support](http://www.myfriendcayla.com/support)

Apple and the Apple logo are trademarks of Apple Inc., registered in the U.S. and other countries. App Store is a service mark of Apple Inc.  
Android, Google Play and the Google Play logo are trademarks of Google Inc.

System requirement:  
Android 4.0.3 or above iOS 7.1+ or above  
\* Min OS version may increase from time to time. Please check  
[www.myfriendcayla.com/devices](http://www.myfriendcayla.com/devices) for latest updates.

PLEASE RETAIN THIS INFORMATION FOR FUTURE REFERENCE. SCREEN DISPLAY MAY VARY FROM DIFFERENT DEVICES.

The Bluetooth® word mark and logos are registered trademarks owned by the Bluetooth SIG, Inc. and any use of such marks by Genesis™ is under license.  
Other trademarks and trade names are those of their respective owners.

genesis. All Rights Reserved. MADE IN CHINA  
Manufactured by Genesis Industries LTD, China  
Police Industrial Area, Huizhou Town, Shou, Huizhou, China.

This device complies with Part 15 of the FCC Rules.

Operation is subject to the following two conditions:  
(1) This device may not cause harmful interference, and  
(2) This device must accept any interference received, including interference that may cause undesired operation.

Warning: Changes or modifications to this unit not expressly approved by the party responsible for compliance could void the user's authority to operate the equipment.  
NOTE: This equipment has been tested and found to comply with the limits for a Class B digital device, pursuant to Part 15 of the FCC Rules. These limits are designed to provide reasonable protection against harmful interference in a residential installation. This equipment generates, uses and can radiate radio frequency energy and, if not installed and used in accordance with the instructions, may cause harmful interference to radio communications.

However, there is no guarantee that interference will not occur in a particular installation. If this equipment does cause harmful interference to radio or television reception, which can be determined by turning the equipment off and on, the user is encouraged to try to correct the interference by one or more of the following measures:

- Reorient or relocate the receiving antenna.
- Increase the separation between the equipment and receiver.
- Connect the equipment into an outlet on a circuit different from that to which the receiver is connected.
- Consult the dealer or an experienced radio/TV technician for help.

01242-US

