



User Manual



Dual motion sensor for club (MICROSIM 2.0)

User Manual

Composition

SLX-MICROSIM 2.0 (Multi Motion Sensor) 2.0 model components.
It may be changed depending on some package keys.



Register Product

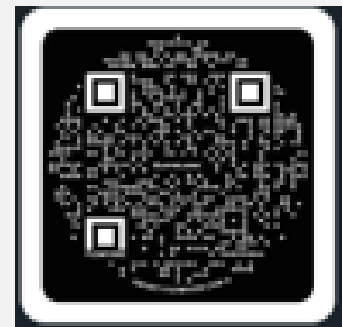
Welcome to SLX. Register your product right away.
After registration, you will receive an E6 Connect license.



Register Card

Scan QR with Camera App

You must register your product and serial number on SwingLogic.us and select the license type to receive your E6 License key



Or navigate to
<https://register.swinglogic.us>

Registration STEPS

Use Camera app to scan included QR code Fill out registration information. E6 license key will be emailed from registration@swinglogic.us and is accessible from the SwingLogic user portal Set up E6 account at <https://portal.e6golf.com/> using the same email address in step 2 Redeem license key Download E6 Connect and setup using the same email address as above

Caution) If you do not register the product, you will not be able to receive a license, and some AS and exchange may be difficult.

Swing with MICROSIM sensor

If you use a MICROSIM sensor, you can get more accurate swing results. Club Mount are required when swinging using the MICROSIM sensor.

Install the mount on the club as shown below. by turning sensor
When you insert it, the club is automatically recognized.

Mount and Swing Guide



- 1 Install the mount on the club and raise the sensor (the club will be recognized)
- 2 When you get into swing position, it will vibrate.
- 3 Swing within 3 seconds
- 4 You can control clubs, etc. through the connected app and buttons.

Note) Swing recognition may be difficult depending on the golfer's setup posture. In this case, adjust the position of your MICROSIM sensor to find the recognized position.

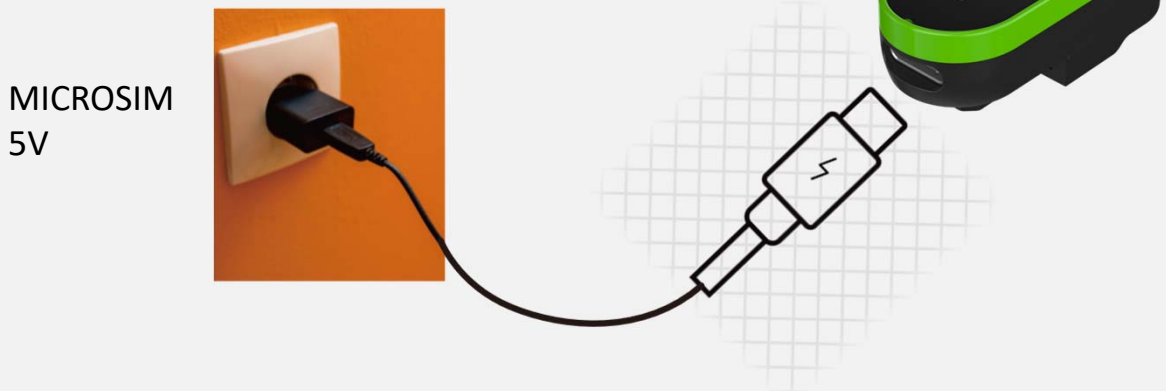
Charging and using Power bank

SLX-MICROSIM USER MANUAL

Charge your phone during a round of golf with power bank function

Device Charging

Adapter is not included



Caution) It can be charged with USB-C type using a 5 V d.c., 1 A charging adapter. Hybrid charging time 8 hours, MICROSIM charging time 2 hours



Correct disposal of batteries in this product (Applicable in countries with separate collection systems.)

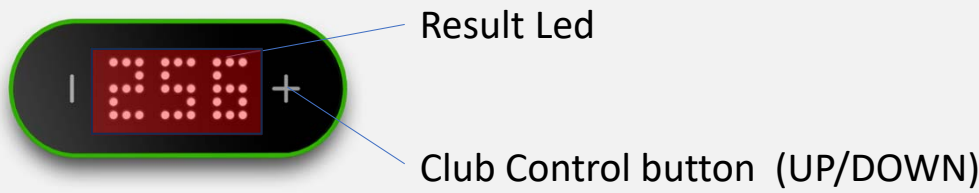
The marking on the battery, manual or packaging indicates that the battery in this product should not be disposed of with other household waste. Where marked, the chemical symbols Hg, Cd or Pb indicate that the battery contains mercury, cadmium or lead above the reference levels in EC Directive 2006/66.

The battery incorporated in this product is not user replaceable. For information on its replacement, please contact your service provider. Do not attempt to remove the battery or dispose of it in a fire. Do not disassemble, crush, or puncture the battery. If you intend to discard the product, the waste collection site will take the appropriate measures for the recycling and treatment of the product, including the battery.

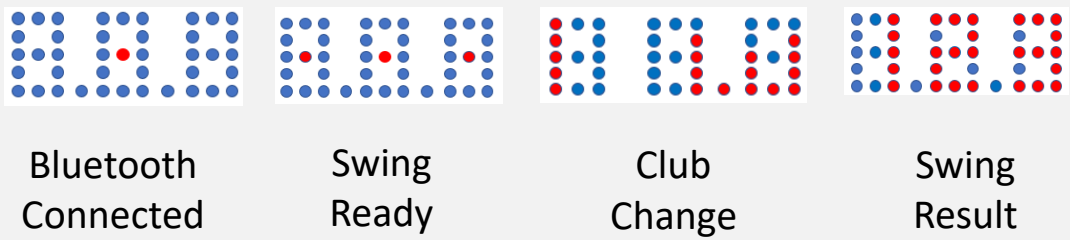
Button and LED Guide

Enjoy the ultra-easy-to-operate buttons and the MICROSIM button with remote control function.

MICROSIM Button



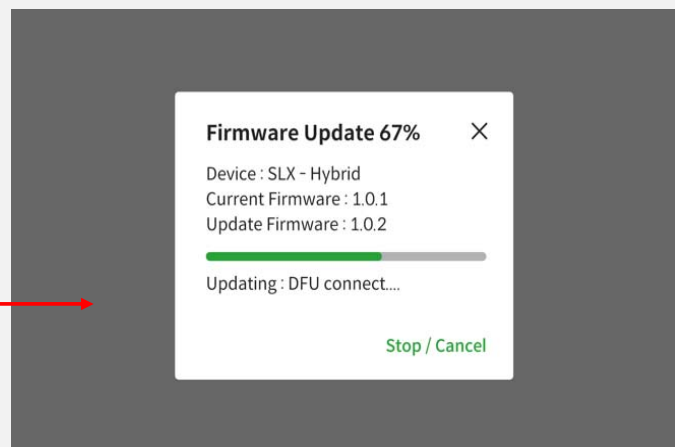
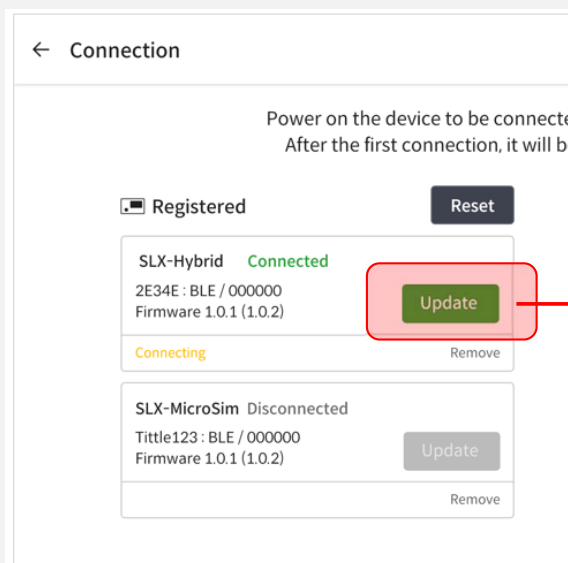
MICROSIM LED



Firmware Update

Connect SLX-CONNECT > Connect menu > Device Select

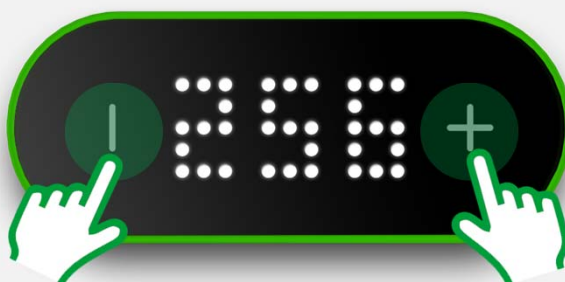
When the firmware of HW is updated, it is activated with a green button.



Device Factory Reset

If device is not connected continuously, any button does not work, or is incorrect, you can perform a factory reset through the button.

Press two fingers at the same time the + / - button continuously for more than **7 seconds**.



Caution) All stored calibration data will be deleted during factory reset.

Using E6 Connect

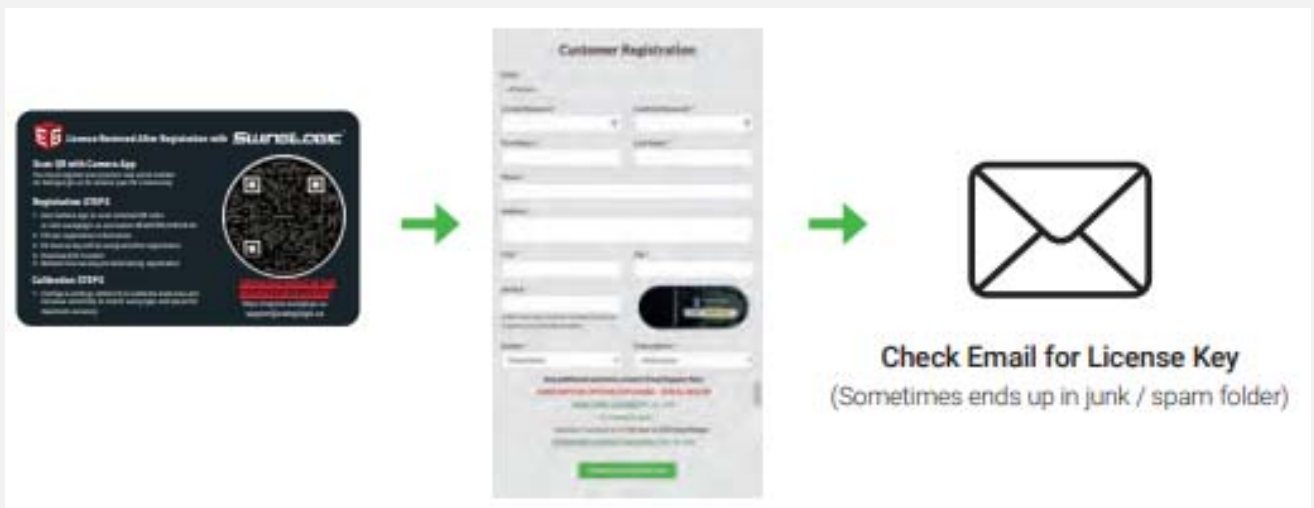
E6 CONNECT software is available.

Please install and connect according to each SETP.

Create an account and register with Swing Logic

STEP 1

Create an account and register with us STEP 1 Find the included Card as depicted below: You can either scan the QR code on your phone's camera or go to : <https://register.swinglogic.us>



LICENSE OPTIONS EXPLAINED (IMPORTANT)

5-Course Option is your FREE License and one version (iOS or PC) is included with Purchase. If you want to UPGRADE to the Expanded Content Subscription @ \$10/mo, that is the and Option DETAILS: Expanded Content Subscription now has ~40 Courses, mini games (darts, closest to pin, battleship...) & Online Play + multiple modes (Regular Stroke Play, captains choice, best ball etc...) Check out our website to learn more about the additional features if this interests you. If you are an avid golfer...\$10/mo for infinite rounds on 40 courses is a pretty good deal

Using E6 Connect

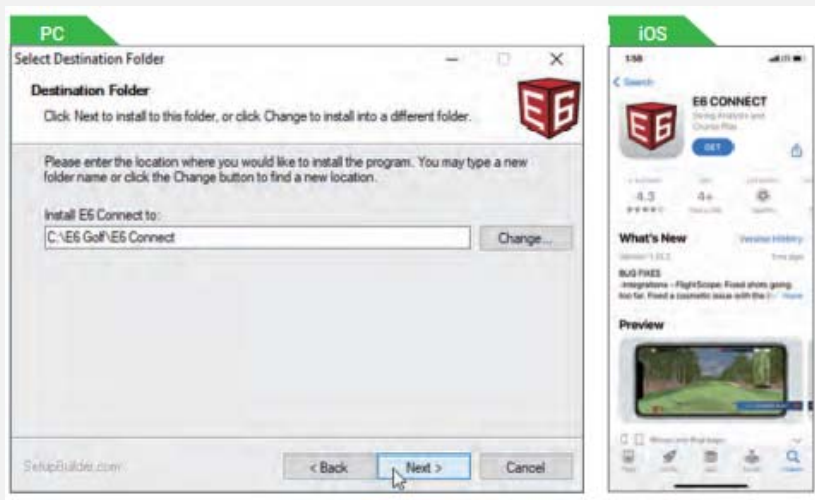
Install E6 CONNEC

STEP 2

After download, Run the program to install the software.

PC Version: <https://portal.e6golf.com/update/e6-connect>

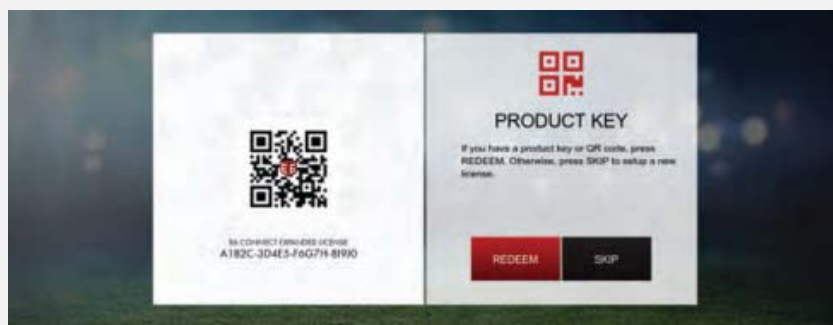
iOS Version: You will need to download the software from the app store. If you search for “E6 CONNECT” then it will pull up and you will be able to download



Start the E6 Application & Redeem your License

STEP 3

If you have a License code, press the REDEEM button to enter the code. If you don't have the code, press SKIP to move on. If you press SKIP, the demo version will be applied by default. You will also be required to setup an E6 Connect Account during this process. Please take note and remember your login credentials



Using E6 Connect

License Activation

STEP 4

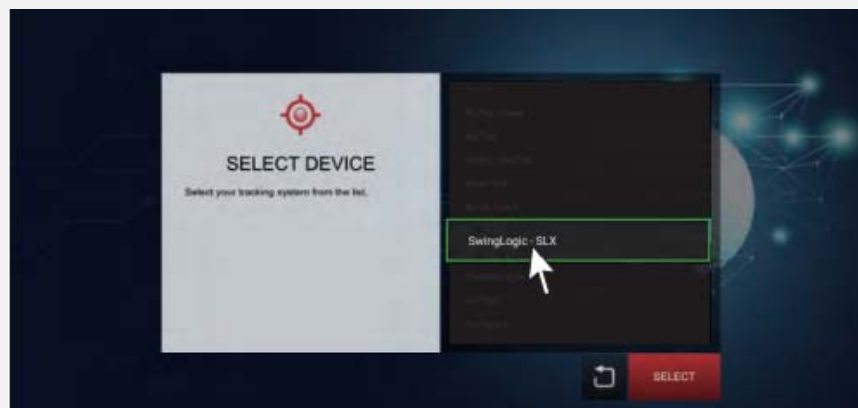
Enter License Key and press the Enter button



Select Tracking System Device

STEP 5

Select **"SwingLogic -SLX"**



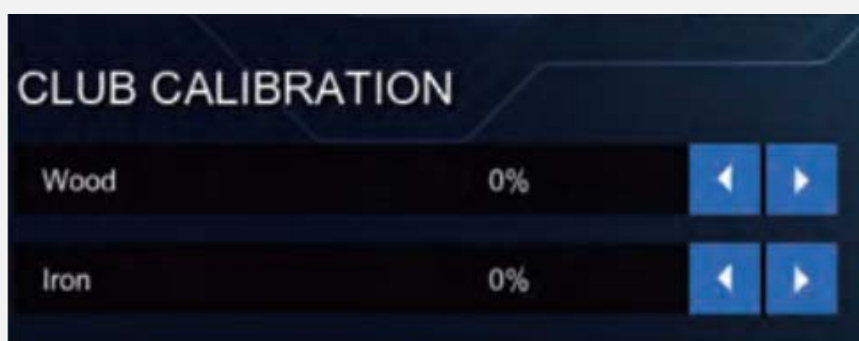
NOTE : Depending on the license type you are redeeming, the list of available trackers will be different. If you have redeemed any of the license we have provided, the list will be much shorter and contain only small sensor based products

Using E6 Connect

Calibrate sensor Setting - Maximize Accuracy

STEP 8

When inside the application's Main Menu. **Settings→Simulator→Configure**



Important!

Default Settings should be: Difficulty = Normal, Sensitivity = Normal, Woods/Iron/Putter = Your Choice based on type of clubs you will be installing sensor on. It is best to start with 0% distance "boost" to see what your sensor is displaying initially then adjusting up or down based on simulator output vs expected ball flight. You can also increase the altitude in Enviromental Settings to have your ball fly further

Check the swing data on the screen

STEP 9

When you swing, the ball will fly on the screen and Post-Shot dialog is displayed.



Important!

For more details on E6 Connect, check the "<https://e6golf.com/e6-connect/manual>"

Club selection control

STEP 10

You can change your club selection outside of the E6 Connect Application by click these up and down buttons



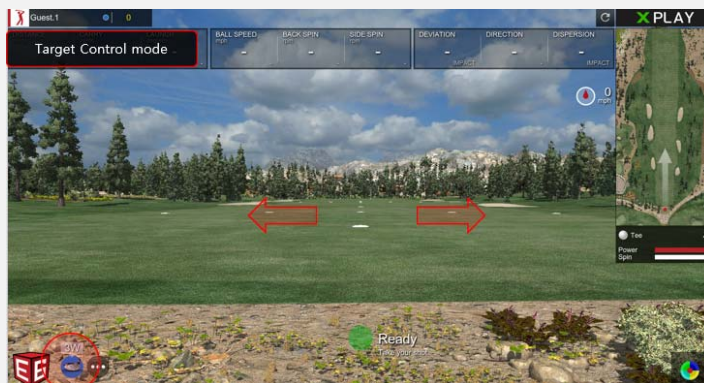
Important!

On the green, it automatically changes to the target direction. (Club side does not work on green)

Target Control

STEP 11

In the fairway / driving range, if you click the mode button once, it will change to "Target Control mode". Afterwards, you can change the target with the up/down buttons. If you click the mode button again, it will change to "Club Control mode".



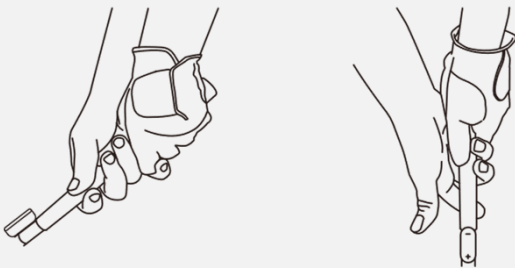
Check the latest registered information at swinglogic.us/support.
Below is a simple troubleshooting guide.

Replacing and reconnecting the MICROSIM Sensor

- ✓ If the Hybrid and MICROSIM are not connected or if you need to replace the MICROSIM,
- ✓ See the "MICROSIM Sensor Replacement" manual.
- ✓ If you press and hold the "-" button on the Hybrid and MICROSIM sensors, they are automatically connected.

MICROSIM Sensor Swing Recognition

- ✓ If the MICROSIM sensor does not recognize the swing well,
- ✓ try adjusting the position of the sensor installed on the glove.
- ✓ Depending on the customer's setup posture, it may not be recognized.



Calibration of swing results

- ✓ If the swing results are very different
- ✓ try adjusting each result in the SLX-Connect app > Settings > Calibration menu.

Factory reset

- ✓ If everything does not work,
- ✓ you can reset it by pressing the "+" / "-" buttons at the same time for 7 seconds.
Read the "Factory Reset" menu.

FCC Compliance Statement

This device complies with part 15 of the FCC Rules.

Operation is subject to the following two conditions : (1) This device may not cause harmful interference, and (2) This device must accept any interference received, including interference that may cause undesired operation.

CAUTION: Changes or modifications not expressly approved by the party responsible for compliance could void the user's authority to operate the equipment

Note: This equipment has been tested and found to comply with the limits for a Class B digital device, pursuant to part 15 of the FCC Rules. These limits are designed to provide reasonable protection against harmful interference in a residential installation. This equipment generates, uses and can radiate radio frequency energy and, if not installed and used in accordance with the instructions, may cause harmful interference to radio communications. However, there is no guarantee that interference will not occur in a particular installation. If this equipment does cause harmful interference to radio or television reception, which can be determined by turning the equipment off and on, the user is encouraged to try to correct the interference by one or more of the following measures:

- Reorient or relocate the receiving antenna.
- Increase the separation between the equipment and receiver.
- Connect the equipment into an outlet on a circuit different from that to which the receiver is connected.
- Consult the dealer or an experienced radio/TV technician for help.

RF Exposure Statement

Sample wording: This equipment complies with FCC RF exposure requirements set forth in an uncontrolled environment and can be used without any restriction.

Industry Canada Statement

This device complies with Industry Canada license-exempt RSS standard(s). Operation is subject to the following two conditions: (1) this device may not cause interference, and (2) this device must accept any interference, including interference that may cause undesired operation of the device.

Énoncé d'Industrie Canada(IC)

Le present appareil est conforme aux CNR d'Industrie Canada applicables aux appareils radio exempts de licence. L'exploitation est autorisée aux deux conditions suivantes : (1) l'appareil ne doit pas produire de brouillage, et (2) l'utilisateur de l'appareil doit accepter tout brouillage radioélectrique subi, même si le brouillage est susceptible d'en compromettre le fonctionnement.

Tout changement ou modification non expressément approuvé par la partie chargée de la mise en conformité peut annuler le droit de l'utilisateur à utiliser l'équipement.

Déclaration d'exposition aux RF

Exemple de formulation: Cet équipement est conforme aux exigences d'exposition RF de la FCC énoncées dans un environnement non contrôlé et peut être utilisé sans aucune restriction.



SPECIFICATION

Product name : Dual motion sensor for club (MICROSIM 2.0)

Model No : SLX-MM200

Size : 42mm * 15 mm (22g)

Bluetooth : 4.0 BLE 2.4Ghz 1Mbps

Power Source : Li-Polymer 80mAh

Operating Temperature: -10 °C ~ 50 °C

Storage temperature: 5 °C ~ 40 °C

Manufacturer: ULIKE (MADE IN KOREA)

Address : 23, Daehak 1-ro 58beon-gil, Yeongtong-gu,
Suwon-si, Gyeonggi-do, Republic of Korea

ULIKE Co,Ltd