

LEOPARD^{AL}

QUICK START GUIDE

温馨提示

本手册是为了您快速的安装与使用而设计，请您务必认真阅读本《快速入门指南》，并妥善保管，确保可随时翻阅。

您可登陆官网 SPEEDX.COM 查看开箱视频，更多使用帮助请翻阅《自行车使用手册》。

本产品功能及内容仅限本产品购买人使用，其他人不得私自转载、转印、复制、扫描储存提供给他人，或作为其他用途。

本产品所表示的商品文字或图片仅作为辅助说明的用途并非作为商标使用，原商品商标的知识产权仍为原权利人所有。

本手册版权归北京野兽科技有限公司所有，未经公司正式书面授权，任何部分不能被复制、传播、转述、储存在一个检索系统内，或以任何方式翻译成任何语言。本手册上所有内容均经过认真核对，如有任何错误或疏忽，您可以反应给我们。

本公司保留对本手册的最终解释权。

Gentle Reminder

This manual is designed to allow rapid assembly and use, please be sure to read the Quick Start Guide carefully and keep it safe, so you can refer to it in future.

You can visit the official SPEEDX.COM website to watch a video of the box being opened, for more help please refer to the Bicycle Manual.

The features and contents of this product are limited to the product purchaser; other people may not reproduce, transfer, copy, scan and store these instructions so that they are available to others, or for any other purposes, without permission.

The text or pictures used to represent this product are used only for supplementary explanation, not as a trademark, any intellectual property is still the property of the original trademark owners.

This manual is owned by SpeedX Inc. No part may be reproduced, transmitted, quoted, stored in a retrieval system, or translated into any language in any way without the written authorization of the company.

All contents on this manual has been carefully checked. If there are any errors or omissions, you are welcome to notify us.

This company reserves the right to the final interpretation of this Guide.

STEP 1

Open the cardboard packaging

1. Place the package with the arrow facing upwards, open the cardboard box, and remove the paper padding.
2. Remove the accessories box and check the items inside.



Quick-release
lever



Hex wrench



Quick Start
Guide



Bicycle User Manual
Component Guideline



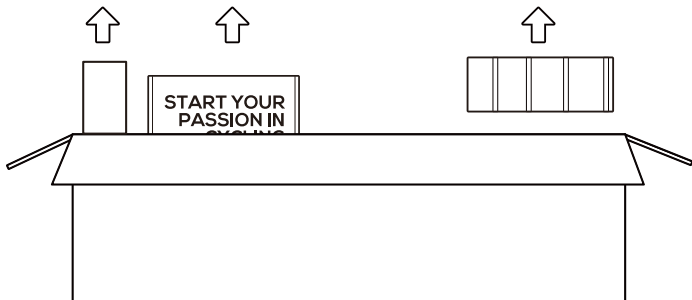
Smart Control
charging cable



Cycling computer



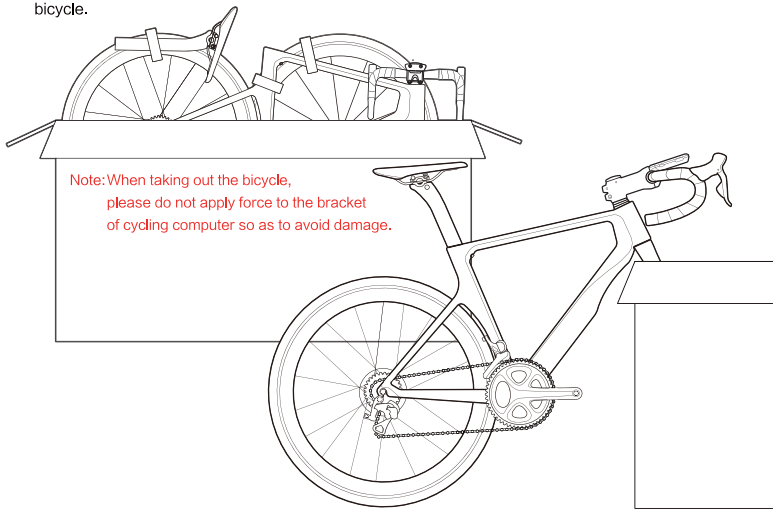
Accessories box



STEP 2

Remove the bicycle

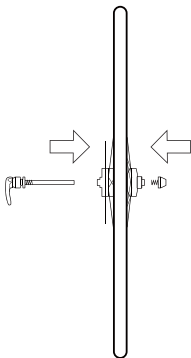
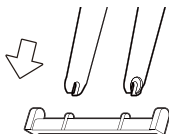
1. Remove the bicycle and wedge the front fork into the side of the box, ensure that the bicycle is stable and not shaking.
2. Remove the velcro and padding from the seatpost, handlebars and other parts.
3. Remove the remaining protective film from the bicycle, and check the appearance of the bicycle.



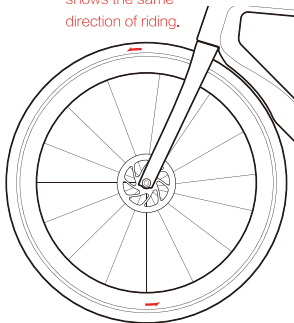
STEP 3

Installing front wheel

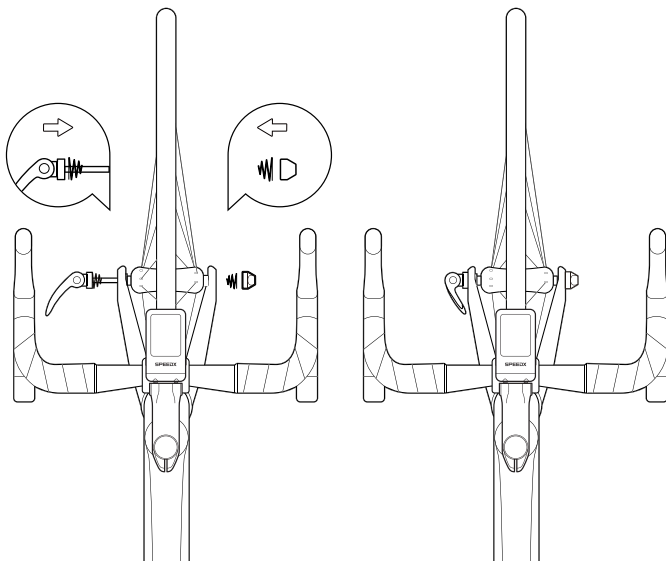
1. Remove the front wheel protective sheet/front fork. Protective bar and disc brake protective sheet, and turn. The front fork to face the correct direction.
2. Hold the front wheels on the ground steadily, so that the arrow marked on the outside of the tyre faces forward, align the front fork with the front wheel slot and insert. Ensure that the centre of the front wheel in the front fork is not skewed.



Note: The arrow on the tyre shows the same direction of riding.



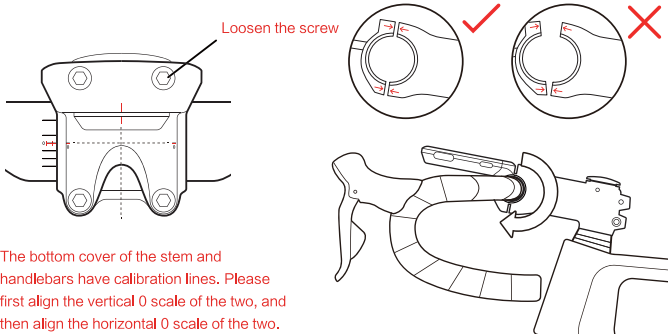
3. Remove the quick-release lever nut and conical spring on the same side. Insert the quick-release lever into the front wheel axis, ensure that the front quick release handle and rear quick release handle are both on the same side of the bicycle, insert the conical spring, and tighten the quick-release lever nut.
4. Tighten the quick-release handle to a safe point.



STEP 4

Adjust the handlebars

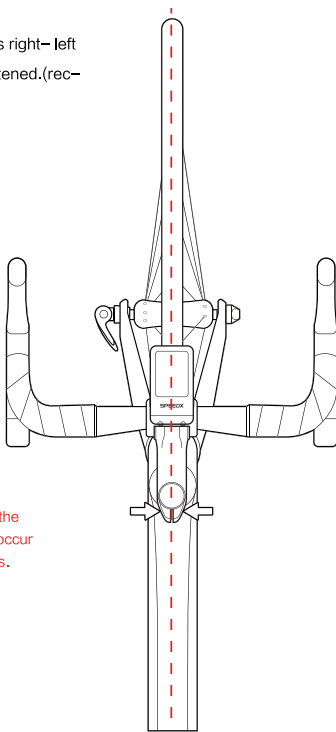
1. Adjust the handlebars to the correct steering angle, the stem, tyre and top tube centre should be in the same centreline.
2. Loosen the four screws on the bottom cover of the stem from opposite diagonals, align the vertical 0 scale and horizontal 0 scale of the handlebars and stem bottom cover respectively; you can also make adjustments for individual riding comfort.
3. Sequentially lock the four screws on the bottom cover of the stem from opposite diagonals, use even force on the four screws (recommended torque value: 6.5– 8.5 N*m), and ensure that the gap between the bottom cover of the stem and stem is of equal width at the top and bottom.



4. Nip the front wheel in legs, twist the handlebars right– left to check if the screws of the stem are fully tightened. (recommended torque value: 6.5– 8.5 N*m)

Note: Keep the stem, the tyres, and top tube on the same centreline.
Make sure the screws on both side of stem are fully tightened.

Warning: If the screws on the stem are not locked with the recommended torque value, problems could occur while riding, including life-threatening crashes.

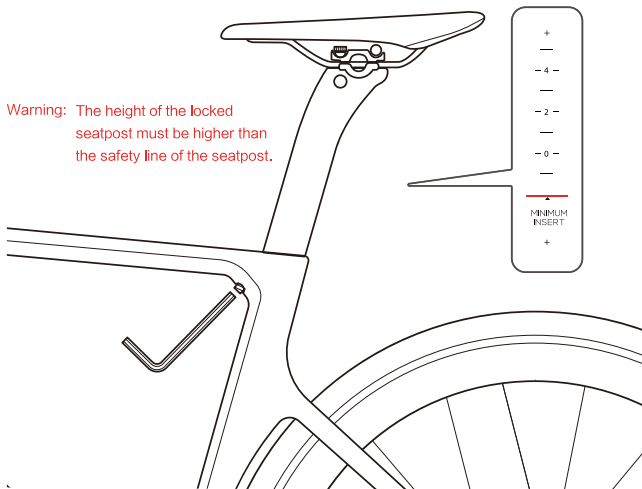


STEP 5

Installing the seatpost

1. Insert into the frame's seat tube, adjust the seat height to fit the individual, lock the seat post locking screw.

Warning: The height of the locked seatpost must be higher than the safety line of the seatpost.



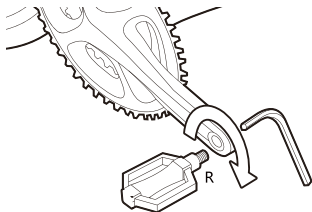
STEP 6

Installing pedals

1. Pick up the pedals; check the text in the centre to distinguish between the left and right.
L is the left pedal, R is the right pedal.
2. Use a hex tool to screw the pedal onto the crank thread (recommended locking torque 35 N*m), the left side pedal is screwed on anti-clockwise; the right side pedal is screwed on clockwise.
3. After the thread is fully locked, slowly apply pressure to the pedal to tighten the lock.

Warning: If the recommend locking torque value is not used on the pedals, the pedal could come loose, damaging the crank thread, causing ride problems, including life-threatening crashes.

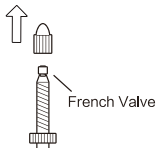
Parts of products do not come with pedals which need to be purchased individually due to the various requirements in riding experience.



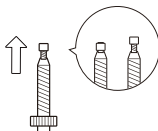
STEP 7

Pump up the tyres

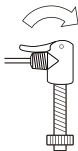
1. Squeeze off the gas nozzle dust cover, twist the switch until it reaches to the top of the valve.
2. Insert the pump cover onto the nozzle, based on rider weight and riding environment, the tyre air pressure can be pumped within the range of recommended value.
3. Remove the pump cover from the nozzle, twist the switch until it reaches the bottom of the valve.
4. Start Pumping, pump the tyre air pressure within the range of recommended value.



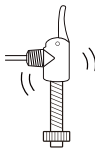
1. Squeeze off the gas nozzle dust cover.



2. Twist the switch until it reaches the top of the valve.



3. Insert the pump cover onto the nozzle.

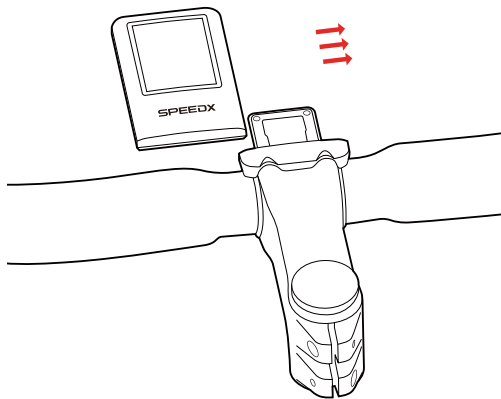


4. Start Pumping, pump the tyre air pressure within the range of recommended value.

STEP 8

Install the cycling computer

1. Put the cycling computer out of the accessories box, align the cycling computer with bracket and insert.
2. After installing, press the main button to start the cycling computer.



USING THE SMART CONTROL

PART A

Power on and Standby

1. Power on: When the cycling computer is charged with USB line, the control is automatically activated.
2. Sleep: When the bike has stopped for 5 mins, the control automatically sleeps.
3. Wake: When you press the main key or motion is detected, the control will wake, recovering pre-sleep values.

Battery Charging

1. Pull off the waterproof rubber cap below the seat post taillight, insert the charging cable.
2. When charging, the screen on the cycling computer will show the charging percentage of battery.

Keys Description

1. Main key: Switch pages, pause or end ride.
2. Left button: Turn the page up, and long-press to connect ANT + devices. Eg: heart rate belt
3. Right button: Turn the page down, and long press to connect Bluetooth devices.
Eg: cellphone, Cadence sensor

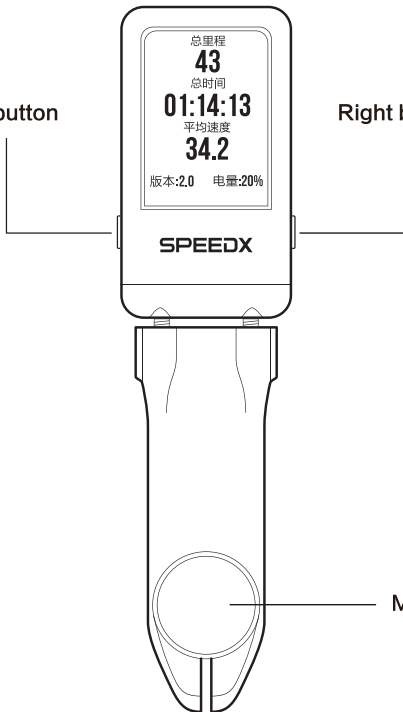
Left button

Right button

总里程
43
总时间
01:14:13
平均速度
34.2
版本:2.0 电量:20%

SPEEDX

Main key



PART B

Start Using

1. Install SpeedX app to your phone

Scan the code on the right side or log in speedx.com/app.html to download,

Support IOS 8.0 and Android 4.4 and above. Systems, supports BLE(Bluetooth 4.0)

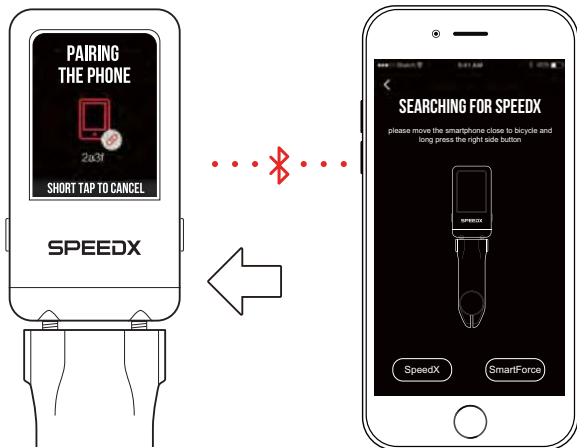
Scan to download the app



2. Control and mobile phone connection

Connecting your phone for the first time.

Press and hold the control key on the right side, the control will enter pairing wait status, activate the Bluetooth on the mobile phone, activate SpeedX App, select 'my device', press the '+' on the right top side of the page, wait until the connection is successful.



Language Settings

After successful connection, click the settings on the top right, select the language you need, Save and Return.

Unit Settings

After successful connection, click the settings on the top right, select the required mileage units (kilometres km/miles mi), Save and Return.

4. Cycling Record

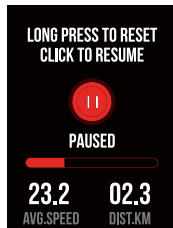
Start Riding

Please first press the main button to enter the reset page, again press the main button and you will clear the current ride data, starting a new record.

Pause Riding

During the cycling process, press the main key to enter the main ride paused state, again tap the main button to continue recording.

When you stop moving, the control automatically pauses, and it will again start automatically when a riding signal is input again.



The ride record ends and data is synchronized

Control end mode: After pressing the main button, enter the reset page; press the main key to end this ride record.

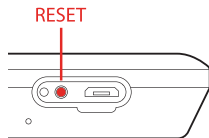
Restarting The Control

Use a pin to press the reset hole in the back of the control, the control is restarted.

To learn more visit speedx.com

Our cycling computer is upgrading constantly,

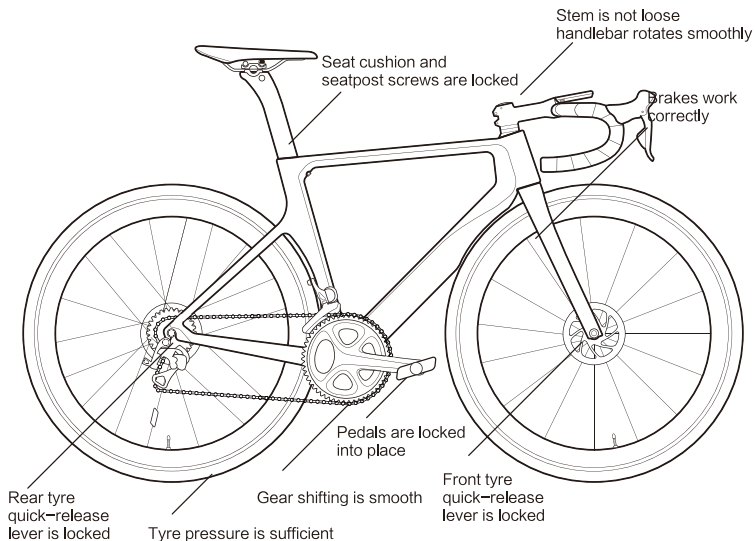
Please visit us on SPEEDX.COM for more details.



Bicycle Checks

After assembly, perform the safety checks (as shown in the Diagram) before going onto the road

Activate your Leopard Tour.



FCC statements:

This device complies with part 15 of the FCC rules. Operation is subject to the following two conditions: (1) this device may not cause harmful interference, and (2) this device must accept any interference received, including interference that may cause undesired operation.

NOTE: The manufacturer is not responsible for any radio or TV interference caused by unauthorized modifications or changes to this equipment. Such modifications or changes could void the user's authority to operate the equipment.