



XD-R3001

Multi-function Locater / Tracker

User Guide

(R2.0)

Peak Points Technology Co., Ltd.



Contents

1. Introduction.....	3
2. Package	3
3. Specifications	3
4. Operate Guide	4
4.1 SIM card install and activate	4
4.2 Real time checking from Internet	5
4.3 Mobile app	5
5. Diagnostic.....	6
5.1 Offline status	6
5.2 GPS signal bad	6
5.3 Indicator not lit up	6
6. Safety	7
7. Maintenance.....	7
8. Warranty.....	7



1. Introduction

The XD-R3001 multi-function locator/tracker utilizes the GPS / *BDS2 / *GLONASS global positioning system, seamlessly merged with GSM / GPRS communication technology, it can pin point the device position fast and accurately. BTW, XD-R3001 is also an anion generator, with the ion density up to 7 million/cm³, that can clean up the air, remove odor inside the vehicle cabin effectively; provides a fresh and pleasant feeling for driving. XD-R3001 additionally provides a USB charger with max. 2100mA current that is good fit for all kinds of mobile equipment, such as iPad, smart phone, etc.

*Remark: By default, positioning is based on GPS system, if other positioning system is required, please make contact with manufacturer.



2. Package

XD-R3001 multifunction locator and this user guide.

3. Specifications

Item	Specification
Input Power	12V DC
Power Consumption	≤13W
Negative Ion Density	≥7 x 10 ⁶ PCS/cm ³ ±10% (within 10cm)
USB Output	5V, 2100mA
Dimension	144.5 x 52.5 x 25.5mm
Weight	≤70g
Operating Temperature	-10℃ to 60℃



Operating Humidity	35% to 85% (non condense)
Fuse Rating	1A
Mobile Frequency	GSM 850/900/1800/1900MHz
GPS Sensitivity	-162dBm
GPS Frequency	L1
BDS Frequency	*B1
GLONASS Frequency	*L1
Coordinate System	WGS-84
Refresh Rate	Average 1s
Hot Start	Average 1s

*Remark: Factory activate, if such frequency is required, please contact manufacturer.

4. Operate Guide

4.1 SIM card install and activate

(A pre-installed SIM card can be provided according to customer request)

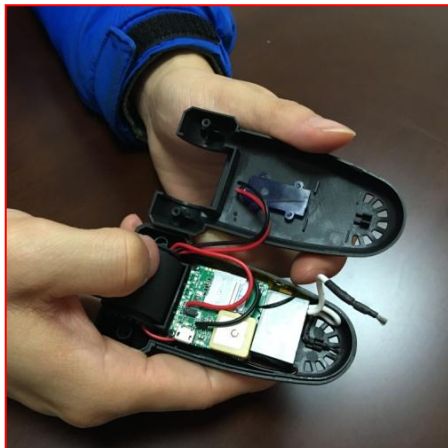
- 1) Open the packing box and check, if model is not correct, please contact the supplier/dealer;
- 2) the device needs to insert a microSIM GSM card;
- 3) loosen 2 screws on the bottom, and open the case gently, put in the microSIM face downwardly on to the card slot. Please check the followings:



1.Loosen 2 screws on the bottom



2.Open it gently



3.SIM card slot locate on the top



4.Push the cap onward



5.Put in the microSIM card



6.Close the cap and lock it



7.Put back the Anion tip



8.Close the case and tighten it

Note:

- 1) microSIM need to be activated the GPRS transport;
- 2) the microSIM may need the caller display according to user expectation;
- 3) if your microSIM request to input the PIN, please check with the mobile operator manual to shut that down;
- 4) please ensure the microSIM card has enough tariff and data traffic.

4.2 Real time checking from Internet

1) Login

Please check with the provider website or visit manufacturer website:

<http://www.xd-gnss.com/>

Get in the login page, input the username and password:

By default

Username: device serial number (IMEI number, labeled on the device)

Default password: **123456** (please modify the password after login)

2) Check vehicle position

After successful login, click on the appropriate functional icon for the location of the vehicle, track playback, parameter settings, etc.

4.3 Mobile app

Please go to the home page of www.xd-gnss.com website to download the Android or iphone client application program,



5. Diagnostic

5.1 Offline status

After few minutes of power applied, but the application platform or the client app is still shown as off-line, please check the device:

- 1) SIM card is properly installed;
- 2) whether the vehicle is in the basement, does not cover by the GSM signal;
- 3) check that is individual device or all devices are in offline mode within the same region, that can help to determine whether the operator's network problem;
- 4) SIM card is in arrears;
- 5) GPRS service has been cancelled (usually at the end of the month).

5.2 GPS signal bad

When the GPS signal reception environment is poor (surrounding by tall building and GPS signal is blocked), then it will show LBS positioning, and accuracy is getting lower, please drive to the open space for better GPS positioning.

5.3 Indicator not lit up

The device is equipped with a fuse, if the indicator on the front is not lit up, please check the fuse. If fuse was broken, usually replace that can resume the device back to normal. If not, and the device is still under warranty, contact your dealer and return for repair. The fuse chamber is located on the tip and opens up as follow:



1. Twist the tip anti-clockwise



2. Fuse is installed inside

Remark: If fuse is broken, replace with 1A rating fuse. Please don't try to use any over rating fuse, that can damage the device permanently, and such action has violate the warranty commitment.



6. Safety

- 1) The device will generate with large number of negative oxygen ion once in operation, please do not touch the metal parts of the device, in order to avoid electrostatic bunt.
- 2) Do not put the device in high heat, high temperature or flammable environment.
- 3) Do not disassemble or put any metal into the device, to prevent electric shock.
- 4) Vehicle power voltage must be in line with the provisions of the power supply voltage, otherwise it will damage the device and the negative ion generator.
- 5) At any time, please do not let the children play with the device.
- 6) When the device is in working mode, it will produce an irregular "Chi Chi" sound, which is the voice of the corona discharge, which is a normal phenomenon.

7. Maintenance

- 1) Do not use organic solvent to clean the device. Power supply must be disconnected first, and by using a soft cloth with neutral detergent to clean the surface and no liquid is allowed to get into the device.
- 2) After certain of time, use a dry brush to wipe the ion outlet, keep that clean and clear.
- 3) Do not overload the USB port that may cause high temperature of the device and resulting of charging power shutdown.

8. Warranty

- 1) The information contained in this document is subject to change without notice and does not represent a commitment on the part of Peak Points Technology Co., Ltd.
- 2) The information in this document is believed to be accurate and reliable; however, Peak Points Tech. assumes no responsibility or liability for any errors or inaccuracies that may appear in the document.
- 3) Please get in the website and activate the device within one month after the purchase. Warranty will **NOT** subject to those devices haven't been activated.
- 4) One year warranty is granted to those devices haven't been opened or repaired by unauthorized person.
- 5) Please fill in the following info, and keep the purchase receipt, warranty may request those documents as reference.



Warranty info:

Customer Name		Contact Phone	
Product Model		IMEI/ID Number	
Purchase Date		Invoice Number	

Peak Points Technology Co., Ltd.

Tel: 0752-2150773

Website: <http://www.fhjwchina.com>

Application server: <http://www.xd-gnss.com>

FCC Warning

This equipment has been tested and found to comply with the limits for a Class B digital device, pursuant to Part 15 of the FCC rules. These limits are designed to provide reasonable protection against harmful interference in a residential installation. This equipment generates uses and can radiate radio frequency energy and, if not installed and used in accordance with the instructions, may cause harmful interference to radio or television reception, which can be determined by turning the equipment off and on. The user is encouraged to try to correct the interference by one or more of the following measures.

- Reorient or relocate the receiving antenna.
- Increase the separation between the equipment and receiver.
- Connect the equipment into and outlet on a circuit different from that to which the receiver is connected.
- Consult the dealer or an experienced radio/TV technician for help.

This equipment complies with FCC radiation exposure limits set forth for an uncontrolled environment. This equipment should be installed and operated with minimum distance 20cm between the radiator & your body.

You are cautioned that changes or modifications not expressly approved by the party responsible for compliance could void your authority to operate the equipment. The distance between user and products should be no less than 20cm. This device complies with part 15 of the FCC Rules. Operation is subject to the following two conditions:

- (1) This device may not cause harmful interference, and
- (2) this device must accept any interference received, including interference that may cause undesired operation.