

Bluetooth Thermometer BT1219

- ❶ On/Off
- ❷ LED light
- ❸ Temperature sensor
- ❹ Front cover (Battery cover)

Proper Use:

The **Livan Thermometer BT1219** is a battery powered wireless transmission device of the sensor head under the arm or on pit of the stomach to monitor the body temperature, and the temperature value will show on the display. The device transfer the measured values to the corresponding application on user's smart-phone by **Bluetooth®**

Against Indications:

The device is not suitable for use in emergencies situations.

Caption:



This instruction manual belongs to this device. It contains important information about starting up and operation. Read the instruction manual thoroughly. Non-observance of these instructions can result in serious injury or damage to the device.



WARNING

These warning notes must be observed to prevent any injury to the user.



CAUTION

These notes must be observed to prevent any damage to the device.



NOTE

These notes give you useful additional information on the installation or operation.



Lot number



Manufacturer



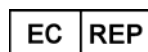
Date of manufacture



applied

Classification: Type BF
part

IP22 protection against solid foreign objects of 12.5 mm Ø and greater and against vertically falling water drops when enclosure tilted up to 15°.



EU Representative

EN -IMPORTANT INFORMATION! -

RETAIN FOR FUTURE USE!



Read the instruction manual carefully before using this device, especially the safety instructions, and keep the instruction manual for future use. Should you give this device to another person, it is vital that you also pass on these instructions for use.



Safety Information

- Only use the unit for the specific purpose described in the instruction manual. Any misuse will void the warranty.
- A control measurement using a conventional thermometer is recommended in the following cases:
 1. If the reading is surprisingly low.
 2. For new-born infants up to 100 days old.
 3. For children under three years of age who have a weakened immune system or who react unusually in the presence or absence of fever.
 4. If you are using the thermometer for the first time or want to familiarize yourself with it
- The unit is not designed for commercial use.
- Using this thermometer is not substitute for consulting a doctor.
- The unit is designed for indoor use.
- This unit is intended measure body temperature.
- Please put the monitor sensor on armpit or pit of the stomach at least 10 minute when monitor the temperature
- This device is not designed to be used by persons (including children) with limited physical, sensory or mental abilities, or by persons with insufficient experience and/or knowledge, unless under observation by a person responsible for their safety, or unless they have been instructed in the use of the device.
- The patient is an intended operator
- Children must be supervised to ensure that they do not play with the device.
- If a fault occurs or the unit is damaged, do not attempt to repair the unit yourself, as this will void the warranty. Contact your dealer and only have repairs carried out by authorized service partners.
- Do not open up the device. It contains small parts which might be swallowed by children.
- Do not use the thermometer in damp environments.
- Do not immerse the thermometer in water or other liquids. It is not watertight.
- Do not shake or tap the thermometer. Do not drop it.
- Protect the device from direct sunlight, extremely high or low temperatures, dirt and dust.
- Do not use or store the unit in an environment where the ambient temperature or humidity is too high or too low (see operating conditions in the **"Technical specifications"** section)
- If the device is not going to be used for a long period, remove the batteries.
- Avoid using any kind of sharp object to touch the device. Do not disassemble or modified.
- Banned in high radiation environments or high concentrations of flammable gases or nitrous oxide environment using this device.
- The device should not both use with CT or MRI.
- Do not use the thermometer if it is damaged.
- When monitor the temperature, Must regularly check the contact with the skin, avoid measurement errors.
- The wireless transmission range may be affected when obstructions or body height shelter
- It may result in inaccurate measurements when sudden movements or low battery power.
- This device should not be used continuously for more than 12 hours. when feel uncomfortable, please stop using and remove the device.

- Only get genuine Parts from the original supplier.
- Before each use and after use, please clean the device follow the instructions **Cleaning and Maintenance**
- If the temperature measurement result is abnormal, please consult your doctor.
- A warning against servicing and maintenance while the equipment is in use

BATTERY SAFETY INFORMATION

- If a battery has been swallowed seek medical attention immediately!
- Do not disassemble batteries!
- Clean the battery and device contacts if necessary before putting in the batteries!
- Remove discharged batteries from the device immediately!
- Increased risk of leakage, avoid contact with skin, eyes and mucous membranes! If battery acid comes in contact with any of these parts, rinse the affected area with copious amounts of fresh water and seek medical attention immediately! Insert the batteries correctly, observing the polarity!
- Keep the battery compartment well sealed!
- Remove the batteries if you do not wish to use the unit for an extended period of time. Otherwise there is a danger that the batteries may leak.
- Keep batteries out of children's reach!
- Do not attempt to recharge these batteries! **There is a danger of explosion!!!!**
- Do not short circuit! **There is a danger of explosion!!!!**
- Do not throw into a fire! **There is a danger of explosion!!!!**
- Keep unused batteries in their packaging away from metal objects in order to prevent short circuiting!

- Do not throw used batteries into the household refuse; put them in a hazardous waste container or take them to a battery collection point, at the shop where they were purchased!



NOTE:

The battery contains the following contaminants: Li (lithium)

Package Contents

Please check the package and the contents are complete, and no any damage on it.

If in doubt, do not operate the device and associated with the dealer or Service positions.

- 1 x **Bluetooth thermometer BT1219**
- 1x **CR2032, 3V button battery**
- 1x **Instructions manual**
- 1 x **Open cover tool**
- 10 x **3M Double Sided Medical Tape**

The packaging is reusable or can be recycled. Observe the environmental protection rules of regarding the disposal when you no longer need the packaging. If you found any damage during open the packing, contact your dealer immediately.



WARNING:

Be sure to put the packaging film out of reach of children. Or it may cause suffocation.

Installing and removing - battery

Install battery before using the device.

Use the **open cover tool** to remove the front case. Then put the battery into the device, be sure the battery is in the correct position. (**POSITIVE(+) IS VISIBLE**) then put back the front cover and compact it, Battery drops after a period of use, **the Yellow Led will keep fast flash**, please change the battery

The device is use 1 x CR2032 , 3V button battery

Download the Application

Download and install the thermometer application on your iOS / Android device.

You can download for free in Apple App Store or Google Play Store

Search«LivanThermo App»



NOTE



A typical smart device with a maximum output power of 2 W yields $d = 3.3$ m at an immunity level of 3 V/m

Establish a connection

Please turn on your Bluetooth on your iOS or Android device.

Press On/Off on the thermometer at least 3 sec to turn on the thermometer.

Launch the App on your iOS or Android device and follow the instruction for the application to establish the connection with the Livan Bluetooth thermometer BT1219, then the devices will be synchronize.

Once the connection has been established, the temperature is shown on the screen of the App on your iOS or Android device.

Please turn off your airplane mode and active Bluetooth on your iOS or Android device, or the connection will be not restricted by calls

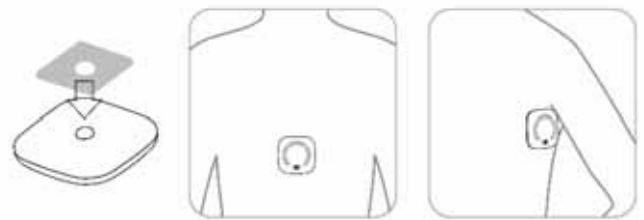
Measuring the temperature

- Please put the steel sensor on armpit to monitor the temperature. Hold the position within 150 seconds, to ensure correct measurement values.
- To ensure a good connection between the device and the iOS or Android device, the distance between devices should not exceed 5 meters. Connection is more secure, if the device is located in the ipsilateral of body
- In normal Bluetooth connection, the scope can reach up to 10 m, the scope can be reduced by obstacles. (E.g wall)

- The application on the iOS or Android device will show the measured temperature Value by the thermometer

Instructions

- Take a Double Sided Medical Tape stuck on the back of the device, then stuck the thermometer. **The sensor device toward the ARMPIT or the pit of the stomach.**



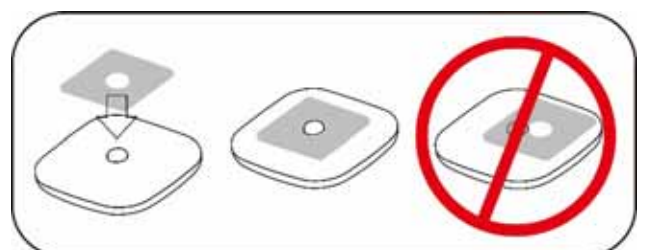
- Power ON by On/Off button(Press 3 sec), all LED on for 5 sec, blue LED continue ON for 5 min, then put the sensor of the device on armpit or pit of the stomach to start monitor the temperature.
- The device will show the temperature in 4 ranges by 3 color LED, green, yellow & red
- 3 color LED temperature indication
Green LED –
when temperature is in between $35^{\circ}\text{C} \sim 37.2^{\circ}$
Yellow LED –
when temperature is in between $37.3^{\circ}\text{C} \sim 37.9^{\circ}$
Red LED –
when temperature is over 38°C
- After using, press the On/Off button for 5 sec, the 4 color LEDs will flash for 5 sec, then the device will shutdown.

Note

The applied part is the sensor head.

The device has automatic shutdown when sensor doesn't any temperature measured for 30 min.

Don't stuck the **Double Sided Medical Tape** on the sensor , that will Error sensing.



Cleaning and Maintenance

- To clean the thermometer, use a soft cloth slightly dampened with mild soapy water or 70% isopropyl alcohol. Do not let water get into the unit. Only use the unit again when completely dry.
- Never use aggressive cleaning agents, thinners, benzene or tough brushes.
- Remove the batteries if you do not wish to use the unit for an extended period of time. Otherwise there is a danger that the batteries may leak.
- If the thermometer is used as described in these instructions, no regular maintenance or calibration is required.



CAUTION

Do not immerse the thermometer in water or any other liquid. It is not watertight

Disposal



This product must not be disposed of together with domestic waste. All users are obliged to hand in all electrical or electronic devices, regardless of whether or not they

contain toxic substances, at a municipal or commercial collection point so that they can be disposed of in an environmentally acceptable manner.

Please remove the batteries before disposing of the device/unit.

Do not dispose of old batteries with your household waste, but at a battery collection station at a recycling site or in a shop.

Consult your municipal authority or your dealer for information about disposal.

Technical specifications

Name & model :	Livan Bluetooth thermometer BT1219
Power supply :	3V = 1 x CR2032 Button battery
Battery service life	Standby for 2 years Continuous use for 30 days
Measuring range :	25°C ~ 45°C

Accuracy of measurement :	±0.1°C
Operating Conditions :	+5°C ~ +40°C (+41°F ~ +104°F) Relative humidity 15-95% Atmospheric pressure 80-106KPa
Storage & transport conditions :	-25°C ~ +70°C (-13°F ~ +158°F) Relative humidity 10-95% Atmospheric pressure 70-106KPa
Dimensions :	Host : 42mm x 42mm x 10.5mm
Material :	Host: ABS plastic Sensor: Steel
Weight :	about 10g (without battery)
Lifetime	2 years
Compatible with :	iOS : 7.0 or higher. Android: 4.3 or higher. Bluetooth 4.0 or higher.
FCC ID	2AHQNB T1219
Article No. :	BT1219
Manual No.:	BT1219 – IFU160908



Note

The device recovers from -25°C to 20°C in 5 minutes, recovers from 70°C to 20°C in 20 minutes

Recommended separation distances between portable and mobile RF communication equipment and the equipment	
The equipment is intended for use in an electromagnetic environment in which radiated RF disturbances are controlled. The customer or the user can help prevent electromagnetic interference by maintaining a minimum distance between portable and mobile RF communication equipment (transmitters) and the equipment as recommended below, according to the maximum output power	
Rated maximum output power of transmitter (W)	Separation distance according to frequency of transmitter (m)
	800 MHz to 2.5 GHz $d = 2,3\sqrt{P}$
0.01	0.23
0.1	0.73
1	2.3
10	7.3
100	23
For transmitters rated at a maximum output power not listed above, the recommended separation distance in meters (m) can be estimated using the equation applicable to the frequency of the transmitter, where P is the maximum output power rating of the transmitter in watts (W) according to the transmitter manufacturer. NOTE: These guidelines may not apply in all situations. Electro	

In accordance with our policy of continual product improvement, we reserve the right to make technical and optical changes without notice.

CE certification of the device refers to the EU Directive 93/42 / EEC.

we declare that the Livan Bluetooth thermometer BT1219, art. BT 1219, respects the fundamental requirements of the European R & TTE Directive 1995/5 / EC.

You can request the complete conformity EC declaration to Livan Technology Co., Ltd.

Electromagnetic compatibility :

The device complies with the EN 60601-1-2 standard for electromagnetic compatibility.

FEDERAL COMMUNICATIONS COMMISSION INTERFERENCE STATEMENT

This equipment has been tested and found to comply with the limits for a Class B digital device, pursuant to Part 15 of the FCC Rules.

These limits are designed to provide reasonable protection against harmful interference in a residential installation.

This equipment generates, uses and can radiate radio frequency energy and, if not installed and used in accordance with the instructions, may cause harmful interference to radio communications.

However, there is no guarantee that interference will not occur in a particular installation.

If this equipment does cause harmful interference to radio or television reception, which can be determined by turning the equipment off and on, the user is encouraged to try to correct the interference by one or more of the following measures:

- Reorient or relocate the receiving antenna.
- Increase the separation between the equipment and receiver.
- Connect the equipment into an outlet on a circuit different from that to which the receiver is connected.
- Consult the dealer or an experienced radio/TV technician for help.

CAUTION:

To assure continued FCC compliance:

Any changes or modifications not expressly approved by the grantee of this device could void the user's authority to operate the equipment.

FCC Label Compliance Statement:

This device complies with Part 15 of the FCC Rules. Operation is subject to the following two conditions:

- (1) this device may not cause harmful interference.
- (2) this device must accept any interference received, including interference that may cause undesired operation.

Exposure to Radio Frequency Radiation:

This equipment complies with FCC radiation exposure limits set forth for an uncontrolled environment. This transmitter must not be co-located or operating in conjunction with any other antenna or transmitter.



Livan Technology Co., Ltd

3F., No.3, Ln. 133, Baozhong Rd., Xindian Dist.,

New Taipei City 23144, Taiwan(R.O.C)

E-mail:info@livan-co.com



Emergo Europe B.V.

Molenstraat 15, 2513 BH The Hague,

The Netherlands.

CE 0434