



Model: BBXGTS
Owner's Manual
23 February 2018
Revision 1

Harman International Industries, Inc.

30001 Cabot Drive

Novi, MI 48377

U.S.A.

BOOM!™ BOX 6.5 GTS

2019 HARLEY-DAVIDSON® OWNER'S MANUAL



Harley-Davidson Motor Company
Service Communications
Milwaukee WI 53208 USA

This publication was produced with 100% renewable energy through the purchase of Renewable Energy Certificates from the non-profit Bonneville Environmental Foundation.



Certified Fiber Sourcing
www.sfiprogram.org

Printed in the USA

2019 HARLEY-DAVIDSON® OWNER'S MANUAL
BOOM!™ BOX 6.5 GTS - 94000601



2019 HARLEY-DAVIDSON® OWNER'S MANUAL

FRONT COVER GOES HERE

Part No:

Title:

Author:

Output Date:

Model: BBXGTS

REGULATORY AND SAFETY INFORMATION

Exposure to Radio Frequency Radiation

The radiated output power of the internal wireless radio is far below the FCC radio frequency exposure limits. Nevertheless, the wireless radio shall be used in such a manner that the radio is 20 cm or further from the human body.

The internal wireless radio operates within guidelines found in radio frequency safety standards and recommendations, which reflect the consensus of the scientific community.

The radio manufacturer believes the internal wireless radio is safe for use by consumers. The level of energy emitted is far less than the electromagnetic energy emitted by wireless devices such as mobile phones. However, the use of wireless radios may be restricted in some situations or environments, such as aboard airplanes. If you are unsure of restrictions, you are encouraged to ask for authorization before turning on the wireless radio.

This device complies with Part 15 of the FCC Rules and with Industry Canada license-exempt RSS standard(s). Operation is subject to the following two conditions: (1) this device may not cause harmful interference, and (2) this device must accept any interference received, including interference that may cause undesired operation.

Le présent appareil est conforme aux CNR d'Industrie Canada applicables aux appareils radio exempts de licence. L'exploitation est autorisée aux deux conditions suivantes: (1) l'appareil ne doit pas produire de brouillage, et (2) l'utilisateur de l'appareil doit accepter tout brouillage radioélectrique subi, même si le brouillage est susceptible d'en compromettre le fonctionnement.

NOTE: This equipment has been tested and found to comply with the limits for a Class B digital device, pursuant to Part 15 of the FCC Rules. These limits are designed to provide reasonable protection against harmful interference in a residential installation. This equipment generates, uses and can radiate radio frequency energy and, if not installed and used in accordance with the instructions, may cause harmful interference to radio communications. However, there is no guarantee that interference will not occur in a particular installation

If this equipment does cause harmful interference to radio or television reception, which can be determined by turning the equipment off and on, the user is encouraged to try to correct the interference by one or more of the following measures: (a) Increase the separation between the equipment and receiver. (b) Consult the dealer or an experienced radio technician for help.

This device complies with IC radiation exposure limits set forth for an uncontrolled environment. The device should be installed and operated with a minimum distance of 20cm between the radiator and your body. This device must not be collocated or operating in conjunction with any other antenna or transmitter



DECLARATION OF CONFORMITY

The EC Declaration of Conformity is available at www.harman.com/EN-US/ContactUs/Pages/Compliance.aspx.

English

Hereby, Harman Becker Automotive Systems, Inc., declares that this device is in compliance with the essential requirements and other relevant provisions of Directive 1999/5/EC.

Česky [Czech]

Harman Becker Automotive Systems, Inc. tímto prohlašuje, že toto zařízení je ve shodě se základními požadavky a dalšími příslušnými ustanoveními směrnice 1999/5/ES.

Dansk [Danish]

Undertegnede Harman Becker Automotive Systems, Inc. erklærer herved, at følgende udstyr anordning overholder de væsentlige krav og øvrige relevante krav i direktiv 1999/5/EF.

Deutsch [German]

Hiermit erklärt Harman Becker Automotive Systems, Inc., dass sich das Gerät in Übereinstimmung mit den grundlegenden Anforderungen und den übrigen einschlägigen Bestimmungen der Richtlinie 1999/5/EG befindet.

Eesti [Estonian]

Käesolevaga kinnitab Harman Becker Automotive Systems, Inc. et käesolev seade vastab direktiivi 1999/5/EÜ põhinõuetele ja teistele asjakohastele sätetele.

Español [Spanish]

Por medio de la presente Harman Becker Automotive Systems, Inc. declara que el dispositivo cumple con los requisitos esenciales y cualesquiera otras disposiciones aplicables o exigibles de la Directiva 1999/5/CE.

Ελληνική [Greek]

ΜΕ ΤΗΝ ΠΑΡΟΥΣΑ Harman Becker Automotive Systems, Inc. ΔΗΛΩΝΕΙ ΟΤΙ Η ΣΥΣΚΕΥΗ ΣΥΜΜΟΡΦΩΝΕΤΑΙ ΠΡΟΣ ΤΙΣ ΟΥΣΙΩΔΕΙΣ ΑΠΑΙΤΗΣΕΙΣ ΚΑΙ ΤΙΣ ΛΟΙΠΕΣ ΣΧΕΤΙΚΕΣ ΔΙΑΤΑΞΕΙΣ ΤΗΣ ΟΔΗΓΙΑΣ 1999/5/ΕΚ.

Français [French]

Par la présente Harman Becker Automotive Systems, Inc. déclare que ce dispositif est conforme aux exigences essentielles et aux autres dispositions pertinentes de la directive 1999/5/CE.

Italiano [Italian]

Con la presente Harman Becker Automotive Systems, Inc. dichiara che questo dispositivo è conforme ai requisiti essenziali ed alle altre disposizioni pertinenti stabilite dalla direttiva 1999/5/CE.

Latviski [Latvian]

Ar šo Harman Becker Automotive Systems, Inc. deklarē, ka ierīce atbilst Direktīvas 1999/5/EK būtiskajām prasībām un citiem ar to saistītajiem noteikumiem.

Lietuvių [Lithuanian]

Šiuo Harman Becker Automotive Systems, Inc. deklaruoja, kad šis įrenginys atitinka esminius reikalavimus ir kitas 1999/5/EB Direktyvos nuostatas.

Nederlands [Dutch]

Hierbij verklaart Harman Becker Automotive Systems, Inc. dat het toestel in overeenstemming is met de essentiële eisen en de andere relevante bepalingen van richtlijn 1999/5/EG.

Malti [Maltese]

Hawnhekk, Harman Becker Automotive Systems, Inc., tiddikjara li dan il-prodott jikkonforma mar-rekwiziti essenzjali u ma' dispozizzjonijiet oħrajn rilevanti li hemm fid-Direttiva 1999/5/KE.

Magyar [Hungarian]

Alulírott, Harman Becker Automotive Systems, Inc. nyilatkozom, hogy a készülék megfelel a vonatkozó alapvető követelményeknek és az 1999/5/EC irányelv egyéb előírásainak.

Polski [Polish]

Niniejszym Harman Becker Automotive Systems, Inc. oświadcza, że urządzenie jest zgodne z zasadniczymi wymogami oraz pozostałymi stosownymi postanowieniami Dyrektywy 1999/5/WE.

Português [Portuguese]

Harman Becker Automotive Systems, Inc. declara que este dispositivo está conforme com os requisitos essenciais e outras disposições da Directiva 1999/5/CE.

Slovensko [Slovenian]

Harman Becker Automotive Systems, Inc. izjavlja, da je ta izdelek v skladu z bistvenimi zahtevami in ostalimi relevantnimi določili direktive 1999/5/ES.

Slovensky [Slovak]

Harman Becker Automotive Systems, Inc. týmto vyhlasuje, že zariadenie spĺňa základné požiadavky a všetky príslušné ustanovenia Smernice 1999/5/ES.

Suomi [Finnish]

Harman Becker Automotive Systems, Inc. vakuuttaa täten, että tämä laite on direktiivin 1999/5/EY oleellisten vaatimusten ja sitä koskevien direktiivin muiden ehtojen mukainen.

Svenska [Swedish]

Härmed intygar Harman Becker Automotive Systems, Inc. att denna apparat står i överensstämmelse med de väsentliga egenskapskrav och övriga relevanta bestämmelser som framgår av direktiv 1999/5/EG.

Íslenska [Icelandic]

Hér með lýsir Harman Becker Automotive Systems, Inc. yfir því að tæki þetta er í samræmi við grunnkröfur og aðrar kröfur, sem gerðar eru í tilskipun 1999/5/EC.

Norsk [Norwegian]

Harman Becker Automotive Systems, Inc. erklærer herved at denne enheten er i samsvar med de grunnleggende krav og øvrige relevante krav i direktiv 1999/5/EF.

TABLE OF CONTENTS

INTRODUCTION

Your Owner's Manual.....	1
Customer Service Assistance.....	1

SAFETY FIRST

Safety Definitions.....	3
Safety Information.....	3
Navigation.....	3
Pre-Ride Checklist.....	4
Emergency Phone Number.....	4
Emergency CB Operation.....	4

FEATURES AND SPECIFICATIONS

Acronyms Used in this Manual.....	5
Customer Quick Start Guide.....	5
SAFETY.....	5
CONTROLS.....	7
LAYOUT.....	9
BASIC OPERATION.....	11
RADIO.....	11
SETUP.....	12
BLUETOOTH.....	13
BLUETOOTH STREAMING AUDIO.....	13
PHONE.....	14
VOICE RECOGNITION.....	14

NAVIGATION SYSTEM (if equipped).....	14
Map Display.....	14
Input Address.....	14
Select From Category.....	15
Take Me Home Feature.....	15
Specifications.....	15

SETUP

Setup Menu.....	25
Software Updates.....	25

AUDIO

Satellite Radio.....	27
----------------------	----

COMMUNICATIONS

Voice Recognition.....	29
Intercom.....	29
Whim.....	29
Getting Started.....	30
Powering On and Off.....	30
Wireless Headset Setup.....	30
Headset to Headset Intercom Pairing.....	33
Headset Configurations.....	33
Headset Software Version.....	36
Unpair Wireless Headset.....	37
Reset Factory Headset Settings.....	37

TABLE OF CONTENTS

Fault Reset.....	38
Citizen Band (CB) Radio.....	38

FAVORITES

Favorites.....	41
Setting a Favorite.....	41
Selecting a Favorite.....	41

INFORMATION

Vehicle Status.....	43
---------------------	----

LIMITED RADIO WARRANTY

2018 Limited Radio Warranty.....	45
Other Rights.....	46

LIMITED RADIO WARRANTY (AUSTRALIA)

2018 Australia/New Zealand Limited Radio Warranty.....	47
Your Consumer Rights.....	47
Warranty.....	47
Warranty Period.....	47
Exclusions.....	48
Obtaining Warranty Service.....	48

GLOSSARY

Acronyms and Measurement Symbols.....	49
H-D U.S.A., LLC Trademark Information.....	49
Product Registered Marks.....	49

YOUR OWNER'S MANUAL

This manual has been prepared to acquaint you with the operation, care and maintenance of your motorcycle. It also provides important safety information. Follow these instructions carefully for maximum motorcycle performance and for your personal motorcycling safety and pleasure.

Your owner's manual contains instructions for operation and minor maintenance. Major repairs are covered in the Harley-Davidson service manual. Major repairs require the attention of a skilled technician and the use of special tools and equipment. Your Harley-Davidson dealer has the facilities, experience and Genuine Harley-Davidson parts necessary to render this valuable service. We recommend that any emission system maintenance be performed by an authorized Harley-Davidson dealer.

Harley-Davidson reserves the right to change specifications, equipment or designs at any time without notice and without incurring obligation.

This owner's manual should be considered a permanent part of the motorcycle and should remain with the motorcycle if it is resold.

CUSTOMER SERVICE ASSISTANCE

Most sales or service issues are resolved at the dealership.

1. Discuss your problem with the appropriate personnel at the dealership in the Sales, Service or Parts area. If that proves unsuccessful, speak to the owner of the dealership or the general manager.
2. If you cannot resolve the issue with the dealership, contact the Harley-Davidson Customer Support Center. Harley-Davidson Motor Company Attention: Harley-Davidson Customer Support Center P.O. Box 653 Milwaukee, Wisconsin 53201 1-800-258-2464 (U.S. only) 1-414-343-4056

For customers outside the US, contact your local Harley-Davidson market office, call 1-414-343-4056 or visit harley-davidson.com.

Table 1. Vehicle and Personal Data

PERSONAL INFORMATION	DEALER INFORMATION
Date of Purchase:	
Name:	Name:
Address:	Address:
Address:	Address:
Vehicle Identification Number:	Sales Contact:
Key Number:	Service Contact:

SAFETY DEFINITIONS

Statements in this manual preceded by the following words are of special significance:

⚠ WARNING

WARNING indicates a potentially hazardous situation which, if not avoided, could result in death or serious injury. (00119a)

⚠ CAUTION

CAUTION indicates a potentially hazardous situation which, if not avoided, may result in minor or moderate injury. (00139a)

NOTICE

NOTICE indicates a potentially hazardous situation which, if not avoided, may result in property damage. (00140b)

NOTE

Refers to important information and is placed in italic type. It is recommended that you take special notice of these items.

SAFETY INFORMATION NAVIGATION

The navigation, lane guidance and traffic features are intended to assist you when traveling. Always use personal judgment

and observation of the actual road conditions while riding. In some circumstances, information provided in the navigation database may be incomplete, incorrect or outdated. Road conditions, traffic laws and restrictions (such as no left turns, street closures, one way streets, road construction detours, and so on) can frequently change. Before following any instruction from the system, check whether the instruction can be done safely and legally.

If necessary, safely park the vehicle if there is difficulty following the route guidance or if there is a need to program a new route. In some circumstances, the system could temporarily provide an inaccurate position of the vehicle or show errors in distance between objects.

When importing routes from other devices or websites, understand that there may be limitations to the accuracy or reliability of the imported data. There may also be compatibility limitations when importing data files from another device or website.

Program and review navigation routes with the vehicle stopped. When taking a long trip, plan and review the route before riding the motorcycle. Install updates to the navigation database to make sure you have the latest information available.

PRE-RIDE CHECKLIST

To make full use of features and minimize distraction while on the road, configure the system with your personal preferences before riding.

- Set brightness, background color and day/night color mode.
- Configure presets and favorites.
- Select tuning mode (tune/seek/preset).
- Adjust audio settings (volume, tone, fade and headset/speaker selection).
- Pair, connect and set up phone features through Bluetooth.
- Connect USB devices.
- Select station or media.
- Set up trips and navigation.
- Set up CB and intercom.
- Connect and put on headsets.

EMERGENCY PHONE NUMBER

Setting up an emergency phone number can provide access to help when needed. See [Unresolved link \(id=118978\)](#).

Phone numbers and navigation to nearby emergency resources are also available on equipped systems. See [Unresolved link \(id=118979\)](#).

4 Safety First

EMERGENCY CB OPERATION

For vehicles equipped with a CB, channel 9 is reserved for emergency use in most countries. When using this channel for emergencies or assistance, clearly identify the nature of the problem and your location. If no response is received, try other channels or find another way to get help.

ACRONYMS USED IN THIS MANUAL

See Table 2. explains the acronyms used throughout this manual.

Table 2. Acronyms

ACRONYM	DESCRIPTION
AVC	Automatic volume control
BT	Bluetooth
BTA	Bluetooth audio
BTHS	Bluetooth headset
CB	Citizens band
COM	Communication
CVO	Custom Vehicle Operations
DISP	Display
DMI	Digital media indexing
EITMS	Engine idle temperature management system
GPS	Global positioning system
POI	Point of interest
PTT	Push to talk
RDS	Radio Data System
RBDS	Radio Broadcast Data System
TA	Traffic announcement
TP	Traffic program
THD	Total harmonic distortion
TMC	Traffic message control
TPMS	Tire pressure monitoring system

Table 2. Acronyms

ACRONYM	DESCRIPTION
VOX	Voice operated transmission
WHIM	Wireless headset interface module

CUSTOMER QUICK START GUIDE

SAFETY

Follow all warnings, cautions and safety tips in this Quick Start Guide, vehicle owner's manual and **Boom! Box** owner's manual.

⚠ WARNING

Set volume levels and other controls on audio and electronic devices before riding. Distractions can lead to loss of control, resulting in death or serious injury. (00088b)

⚠ WARNING

Set CB channel, squelch threshold and volume before riding to minimize adjustments on the road. Distractions can lead to loss of control, resulting in death or serious injury. (00089a)

⚠ WARNING

Do not select a volume level that blocks out traffic noise or interrupts the concentration necessary for safe operation of the motorcycle. Distractions or a volume level that blocks out traffic noise could cause loss of control resulting in death or serious injury. (00539b)

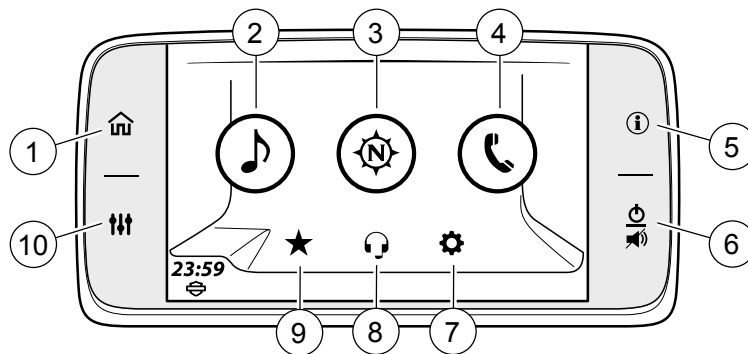
NOTICE

There are no serviceable parts inside the unit; leave all servicing to qualified service personnel. Disassembly of the unit could result in equipment damage and/or equipment malfunction. (00172a)

CONTROLS

Faceplate

1142080



- 1. Home
- 2. Audio
- 3. Navigation
- 4. Phone
- 5. Info

- 6. Power/Mute
- 7. Setup
- 8. Communications
- 9. Favorites
- 10. Audio Settings

Figure 1. Faceplate Controls

Right Hand Controls

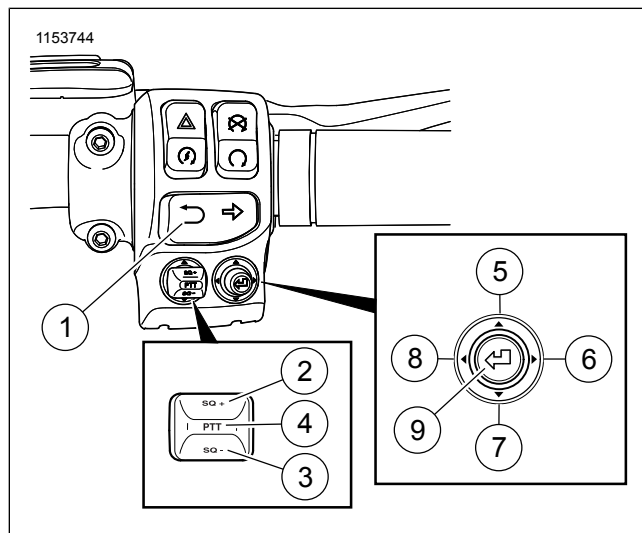


Figure 2. Right Hand Control Audio Functions

Table 3. Right Hand Control Audio Functions

ITEM	ICON	NAME	FUNCTION
1		Back Button	Short Press: Back to previous screen Long Press: Screen transitions between normal day color and high contrast color
2	SQ +	CB Squelch +	Increases CB squelch level (if equipped).
3	SQ -	CB Squelch -	Decreases CB squelch level (if equipped).
4	PTT	CB Push to Talk	Press and hold to transmit on CB/intercom (if equipped).
5		Cursor Up	Moves the highlighting up through the selections.
6		Cursor Right	Moves the highlighting right through the selections.
7		Cursor Down	Moves the highlighting down through the selections.
8		Cursor Left	Moves the highlighting left through the selections.
9		Select /Enter	Selects highlighted item.

Left Hand Control

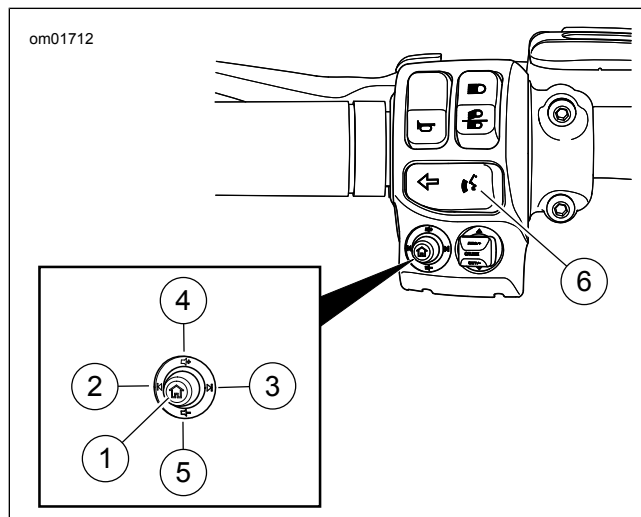


Figure 3. Left Hand Control Audio Functions (typical)

Table 4. Left Hand Control Audio Functions

ITEM	ICON	NAME	FUNCTION
1		Home	Toggles between current screen and Home screen
2		Previous /Seek Down	Media: Previous media file. Tuner: Tune/seek/next preset down.

Table 4. Left Hand Control Audio Functions

ITEM	ICON	NAME	FUNCTION
3		Next/Seek Up	Media: Next media file. Tuner: Tune/seek/next preset up.
4		Volume Up	Increases volume
5		Volume down	Decreases volume
6		Voice Recognition	Initiates a voice recognition session

LAYOUT

Setup/Settings

Refer to Figure 4.

See Refer to Figure 1.Refer to Figure 2.Refer to Figure 4.Refer to Figure 5.Refer to Figure 6.Refer to Figure 7.Refer to Figure 8.Refer to Figure 9.. Setup/Settings (1).

Radio system setup (1) is located on the home the screen. This should be configured prior to riding the vehicle, with the motorcycle stationary and set to accessory mode.

Radio feature settings (1) adjust the options to make best use of any feature or device that you may be using.

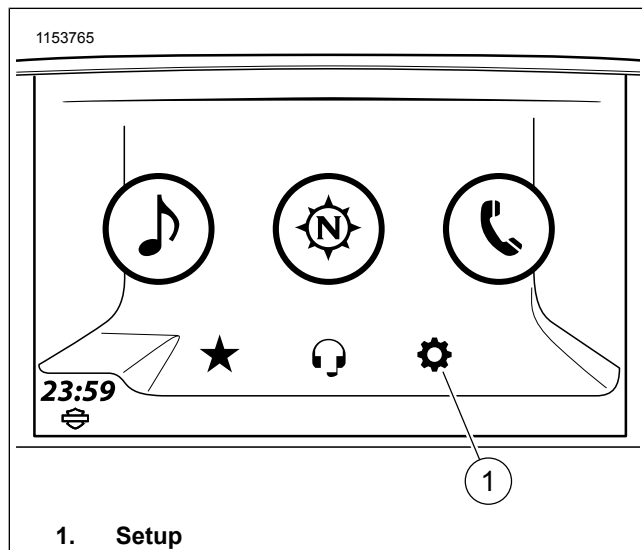


Figure 4. System Setup

Option Menu

Indicates additional options are available for that function.

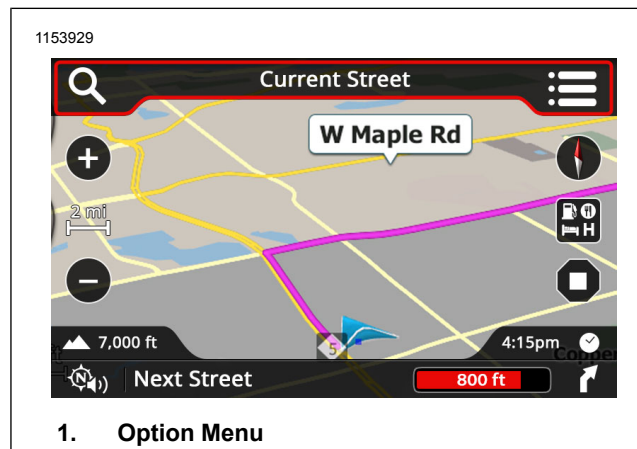


Figure 5. Option Menu

Toggle Buttons

Use the SELECT/ENTER key to toggle through options for that function.

Checkboxes

Enables (if checked) or disables (unchecked) that feature.

BASIC OPERATION

Turning System ON/OFF

1. Turn ignition to ON or to ACC.
2. If radio is OFF, press POWER.

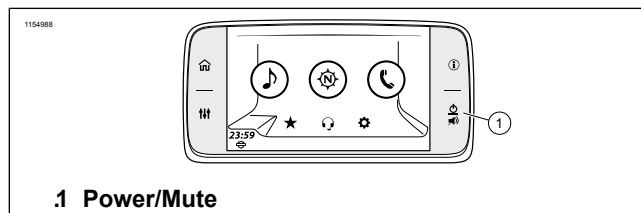


Figure 6. Turning System ON/OFF

3. Read the warning and select Accept.

NOTE

Pressing MUTE for more than 3 seconds will turn radio off.

4. To mute or un-mute audio, briefly press MUTE.

Adjusting Volume/Mute

Press VOLUME UP (1) or VOLUME DOWN (2) on left hand control.

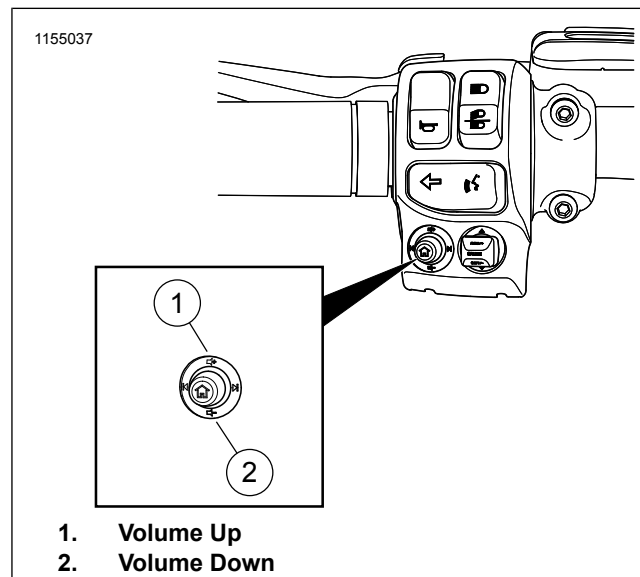


Figure 7. Volume/Mute

RADIO

Select Source

1. **Navigate:** Home > Audio
2. **Select:** Source button.

3. **Select band:** AM - FM - WB.
4. **Select media:** USB (when connected), phone (Bluetooth), SiriusXM (if equipped).

Seek and Save Station

1. **Select:** SEEK DOWN (1) or SEEK UP (2) on left hand control.
2. Press and hold preset button until it beeps.

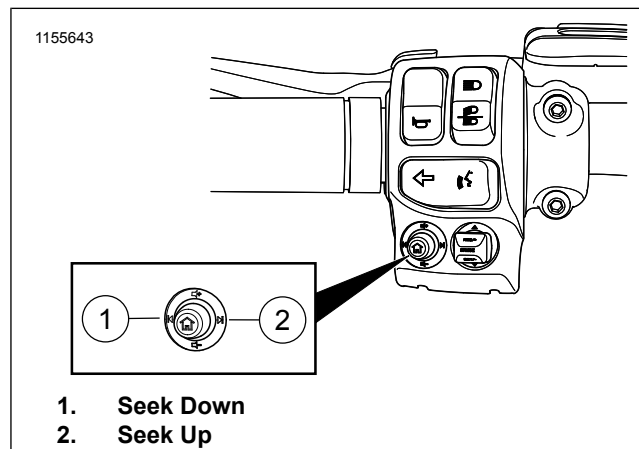


Figure 8. Radio Station Seek

SETUP

Activating Headsets or Speakers (if equipped with headset)

1. **Navigate:** Home > Setup > Audio Settings > Audio Routing
2. Select speaker or headset. Test link:

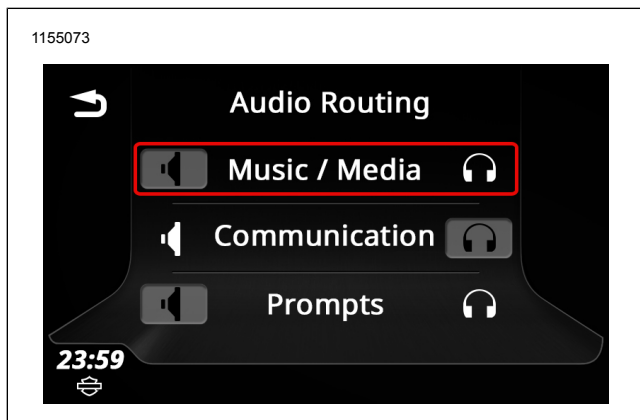


Figure 9. Speaker or Headset

Audio Setup

1. **Navigate:** Home > Setup > Audio Settings
2. **Adjust:** BASS or TREBLE.

BLUETOOTH

Pair a Phone or Other Device

1. Activate Bluetooth on your device.

2. **Navigate:** Home > Phone
3. **Prompt:** No device connected. Would you like to connect a device?
 - a. **Select:** Yes.
4. **Select:** Add new device.
5. **Prompt:** Does PIN (xxxxxx) match on device?
 - a. Check PINs on audio system and device.
 - b. **Select:** Yes (if numbers match).
6. **Prompt:** Would you like to set an Emergency number?
 - a. **Select:** Yes or No.

BLUETOOTH STREAMING AUDIO

NOTE

The device must first be paired with the Boom! audio system before it can be used. See BLUETOOTH. Device must also support Bluetooth audio streaming profile.

1. **Navigate:** Home > Audio

2. **Select:** Source button.
3. **Select media:** Phone (Bluetooth).

PHONE

Making a Call

NOTE

- *The phone must first be paired with the audio system before it can be used through the Boom! Box infotainment system. See BLUETOOTH.*
- *A Harley-Davidson headset with microphone is required to make and receive calls via Bluetooth.*

1. **Navigate:** Home > Phone
2. **Select:** Calls, Contacts, SOS (Emergency) or Keypad.

Receiving a Call

Select: Accept or Ignore.

VOICE RECOGNITION

NOTE

A list of available voice commands are displayed on the screen when the voice recognition

1. **Select:** Voice recognition.
2. When the system beeps, speak a voice command calmly and normally into the headset microphone.

NAVIGATION SYSTEM (if equipped)

Map Display

NOTE

See Boom! Box owner's manual for additional information.

1. **Navigate:** Home > Navigation
2. Use Map controls on the screen to adjust the view.

Input Address

1. **Navigate:** Home > Navigation
2. **Select:** Search icon.

3. **Prompt:** Search: Near Me
 - a. Input address of location.

Select From Category

1. **Navigate:** Home > Navigation
2. **Select:** Search icon.
3. **Select:** Fuel, Food, Hotel, H-D Dealerships, or POI preset category icon.

Take Me Home Feature

1. **Navigate:** Home > Navigation
2. **Select:** Search icon.
3. **Select:** Go Home icon.

SPECIFICATIONS

Not all features are available on all models, destinations or year of manufacture. Most screen illustrations in this manual show the 6.5 GTS radio.

Vehicles are equipped from the factory with the radios and features as described in and . Also see to view the hardware, software and navigation database installed on your vehicle.

Table 5. Boom! Box Radio Identification

MODEL	IDENTIFYING FEATURES *
6.5 GTS	Screen measures 165 mm (6.5 in) diagonally. Radio face is glass and has four fixed-key buttons. Splash screen shows H-D bar & Shield logo.
6.5 GTS (CVO)	Screen measures 165 mm (6.5 in) diagonally. Radio face is glass and has four radio fixed-key buttons. Splash screen shows Custom Vehicles Operations logo.
* See .	

Table 6. Infotainment System Features

FEATURES	6.5 GTS	6.5 GTS (CVO)
Tuner ¹	X	X
Media playback	X	X
Phone	X	X
Voice commands	X	X
Vehicle status	X	X
Wireless headset interface module (WHIM)		X
CB radio ²		X

Table 6. Infotainment System Features

FEATURES	6.5 GTS	6.5 GTS (CVO)
Rider/passenger intercom ³	X	X
Weather alert ^{2,5}		X
Navigation ²	X	X
SiriusXM radio and services ^{2,4}		X
Three free map updates (within 5 years)		X
¹ Frequency bands and RDS features depend on region.		
² Not available in all regions.		
³ Models with passenger headset.		
⁴ Requires activation.		
⁵ CB equipped only.		

Table 7. Display

ITEM	DESCRIPTION
Screen	Weatherproof 6.5-inch WVGA TFT MVA-PSV color touchscreen
Languages	English (US), English (UK), Czech, Dutch, French (Canada), French (France), German, Italian, Japanese, Polish, Portuguese (Brazil), Portuguese (Portugal), Russian, Spanish (Mexico), Spanish (Spain), Turkish

Table 7. Display

ITEM	DESCRIPTION
Day/night color modes	Day, night or automatic sensor activated
Background colors	6 selectable colors (6.5 only)
High contrast day colors	Selectable in day or automatic color modes
Adjustable brightness	Manual or automatic sensor activated

Table 8. Controls

ITEM	DESCRIPTION
Illuminated face-plate controls	Home, information, on/off/mute, audio settings, four fixed-key touchscreen buttons
Integrated handle-bar controls	Volume, seek/previous/next, home, CB push-to-talk (PTT), voice recognition, squelch, cursor/select, back button
Integrated passenger controls	Volume, seek/previous/next, audio source selection, CB push-to-talk (PTT)
Keyboard	Full keyboard, alphabetic keypad, smart speller
Screen selection	Touchscreen
Hand control configuration	Normal or Classic mode

Table 9. Bluetooth

ITEM	DESCRIPTION
Functions	Media streaming, phone calls, phone book download, text message notifications
Protocols	Hands-Free Calling Profile (HFP, HFPAG/HFPHF services), Phone Book Access Profile (PBAP), A2DP/AVRCP (AV/Music, A2DP sink/source services), Message Access Profile (MAP), HFP+PBAP+AV Profile (simultaneously used), MP3, MPEG-4AAC, WMA, WAV
Paired devices	6 devices maximum
Connections	1 for phone, 1 for media
Range (approximate)	30 ft (9 m)

Table 10. Tuner

ITEM	DESCRIPTION
Tuner bands ¹	AM, FM, MW, LW, WB, DAB+, CB, and Satellite Radio
Tuner presets	20 Satellite radio/media, 15 FM/DAB+, 5 AM, 5 LW, 5 MW, 5 WB
Global presets	Up to 4 pages with up to 20 total
Tuning modes	Tune, seek, scan, preset scan
Favorites	1 Fav hardkey plus 6 favorites
Category filtering (PTY)	Selectable

Table 10. Tuner

ITEM	DESCRIPTION
Stations list	Dependent on region
RDS/RDBS	Dependent on region
RDS functions	Traffic Announcement/Traffic Program, Alternate Frequency Switching, Regionalization (dependent on region)
Single/dual tuner	Dependent on region
Weather band channels	7 channels, 5 presets
Weather alert	Select regions, requires CB module
Weather band frequency	WB1-162.400MHz, WB2-162.425MHz, WB3-162.450MHz, WB4-162.475MHz, WB5-162.500MHz, WB6-162.525MHz, WB7-162.550MHz
Clock	GPS/RDS/user-selectable time setting, automatic time zone adjustment

¹ Frequency bands and RDS features depend on region.

² Not available in all regions.

³ Models with passenger headset.

⁴ Requires activation.

⁵ CB equipped only.

Table 11. Media

ITEM	DESCRIPTION
Media presets	20 per device
Media devices supported	USB flash drives, Apple devices (iAP, iUI), PlaysForSure devices, SDRAM card with reader
USB device compatibility	FAT16, FAT32, NTFS, HFS+ (FAT32 required for data import/export and software updates)
Media file playback (USB/PlaysFor-Sure)	MP3, MP4, MPEG-4AAC, M4A, M4B, WAV, WMA
Media file playback (Bluetooth)	MP3, MPEG-4AAC, WMA, WAV
Media file playback (Apple devices)	All iPod supported file types decoded and played from Apple device
USB port	USB 2.0, 5 V, 1.0 A charging current
Media controls	Repeat, shuffle, find, Bluetooth streaming, pause/resume
Playlists supported (Apple)	All playlists native to Apple iPod
Playlists supported (USB/PlaysFor-Sure)	ASX, WPL, M3U, PLS, XML, RMP

Table 12. Audio

ITEM	DESCRIPTION
Speed volume	4 levels of automatic gain based on speed, plus off setting
Audio routing	Adjustable speaker/headset audio routing (tuner, communication device, phone)
Sound adjustment	Audio tone and fade adjustment
Headset connectors	7-pin DIN with protective cap (number of headset ports depends on vehicle configuration)
Headsets (wired)	Helmet-mounted 7-pin DIN headset with microphone boom (non-mounted headset optional)
Headsets (wireless)	Boom Audio 20S EVO Bluetooth helmet headset with microphone (CVO)
Squelch	15 step adjustable, plus full on/off
Output	25 W (6.5 GTS) or 75 W (6.5 GTS CVO) per channel
Speaker configurations	2 sealed and closed front speaker housings, 2 bass port rear speakers (models with Tour-Pak), 2 saddlebag speakers (FLHXSE and FLTRXSE). 2 fairing lower speakers (FLHXSE).
Speakers, fairing: Touring and Trike	6.5 in, 1.7 ohm, 88.9 dB, 75-16.2kHz, 51 W
Speakers, Tour-Pak: Touring and Trike	6.5 in, 1.7 ohm, 88.9 dB, 75Hz-16.2kHz, 51 W

Table 12. Audio

ITEM	DESCRIPTION
Speakers, fairing: FLHTKSE	6.5 in, 1.7 ohm, 91.5 dB, 75Hz-20kHz, 75 W
Speakers, fairing lower: FLHTKSE	6.5 in, 2.0 ohm, 91.5 dB, 75Hz-20kHz, 75 W
Speakers, Tour-Pak: FLHTKSE	6.5 in, 1.7 ohm, 91.5 dB, 75Hz-20kHz, 51 W
Speakers, fairing: FLHXSE	6.5 in, 1.7 ohm, 91.5 dB, 65Hz-20kHz, 150 W
Speakers, saddlebag: FLHXSE	5 x 7 in, 1.7 ohm, 91 dB, 60Hz-20kHz, 150 W
Amplifiers - Watts per channel	Internal 25 W amplifier (all models, turned off for CVO), 75 W fairing amplifier (CVO), additional 75 W amplifier in left saddlebag (FLHXSE and FLTRXSE), third 75W amplifier in RH saddlebag (FLHXSE)
Distortion	<1.5% THD+N

Table 13. Phone

ITEM	DESCRIPTION
Features	Inbound/outbound calls, call history, mute/unmute, phone book download, emergency phone calling, point of interest dialing
Call history	Up to 60 calls (20 received, 20 missed, and 20 dialed calls)
Saved phone numbers	Up to 200 contacts or phone numbers
Compatible phones	See www.h-d.com for phone list
Calls supported	Only one call at a time. Call waiting and three-way calling not supported
Connections	USB (media and charging only), Bluetooth (calls, text messaging, streaming media)
Text messaging	Inbound SMS messages (with text-to-speech), outbound text message autoreply
Indicators	Signal strength and battery level indicators, low battery indicator, text message notification
Ring tones	4 built-in ring tones, 1 custom ring tone (media file import)

Table 14. Wireless Headset Interface Module (WHIM)

ITEM	DESCRIPTION
Key specifications	Bluetooth 4.1; Supporting profiles: Headset Profile, Hands-Free Profile (HFP), Advanced Audio Distribution Profile (A2DP), and Audio Video Remote Control Profile (AVRCP)
Firmware	Upgradeable
Bluetooth	Dual module communication system, intercom up to 2.0 kilometers (1.2 miles)*, audio recording, pairing for dual mobile phones, hands-free for Bluetooth mobile phones, stereo headset for Bluetooth audio devices such as MP3 players, stereo headset for Bluetooth GPS navigations
Reset to factory settings	Yes
Fault reset	Yes
Certification and safety approvals	FCC, FCC, CE, IC, RoHS, WEEE

Table 14. Wireless Headset Interface Module (WHIM)

ITEM	DESCRIPTION
Features	Bluetooth 4.1, music sharing, playback control, versatile jog control, speed dial, audio booster, use while charging, individual volume control, dual Bluetooth module communication system, audio multitasking, multi-way intercom up to 4 connections, group intercom, Bluetooth intercom up to 2.0 kilometers (1.2 miles)*, smartphone app for iPhone and Android, universal intercom, advanced noise control, Intuitive voice prompts and voice commands, Bluetooth audio recording, all-in-one helmet clamp kit, built-in FM radio tuner with a station scan and save function, Bluetooth pairing for dual mobile phones, Bluetooth hands-free for Bluetooth mobile phones, Bluetooth stereo headset for Bluetooth audio devices such as MP3 players, Bluetooth stereo headset for Bluetooth GPS navigations
*In open terrain	

Table 15. CB Radio: Bike-To-Bike Communications

ITEM	DESCRIPTION
CB channels	40
Frequency range	26.925 to 27.405 MHz
Transmitter output	4 W
Modulation	AM or FM (depending on region)
Squelch	15 step adjustable, plus full on/off

Table 16. Intercom

ITEM	DESCRIPTION
Communication	Rider/passenger headset communication
Operation	Push-to-talk (PTT) or voice activation (VOX)
Adjustments	VOX sensitivity, automatic speed sensitivity adjustment

Table 17. Voice Recognition

ITEM	DESCRIPTION
Functions	Tuner, media, phone, SiriusXM, navigation, Siri
Languages (one-shot destination entry)	<ul style="list-style-type: none"> English (US), French (CA), Spanish (MX) (for North America 49ST/CAL/CAN configurations). English (US/UK), French (FR/CA), Spanish (MX/ES), Czech, Dutch, German, Italian, Japanese, Polish, Portuguese (BR/PT) Russian, Turkish (for ENG/HDI-Europe configurations). Not supported for other destinations.
Languages (other commands)	English (US/UK), French (FR/CA), Spanish (MX/ES), Czech, Dutch, German, Italian, Japanese, Polish, Portuguese (BR/PT) Russian, Turkish (for ENG/HDI-Europe configurations).

Table 18. SiriusXM

ITEM	DESCRIPTION
Subscription	Free 3-month trial subscription for 6.5 CVO, optional module and subscription required for other 6.5 systems
Channels	Over 200 channels

Table 18. SiriusXM

ITEM	DESCRIPTION
Radio features	Channel list, direct tune, scanning, song/artist tagging, program categories
Specialty services	Game Zone, fuel prices, weather, traffic
Game Zone	Game and score alerts, up to seven teams
Fuel prices	Up to 30 nearest stations within 100 miles, sort by price/distance/brand, navigate/call station
Weather forecast	Current, daily (3 hour and 6 hour), and 5-day forecast
Weather map	Radar, weather fronts, atmospheric pressure
Traffic	Traffic navigation mapping, rerouting, traffic alerts

Table 19. Navigation

ITEM	DESCRIPTION
Map display	Two data fields, next turn guidance, current street, POI icons, navigation routing, traffic flow/events (requires RDS or SiriusXM traffic service), 3D terrain and landmarks (6.5 CVO only)
Map orientation	North up, 2D heading up, 3D heading up
Points of interest (POIs)	Over 80 POI types

Table 19. Navigation

ITEM	DESCRIPTION
Navigation route selection	Address, recent destination, home destination, phone book contact, POI, dealership, emergency facility, coordinates
Trips	Up to 17 trips
Waypoints per trip	Up to 100 destinations per trip
Trails	Up to 20 trails
File export	GPS Exchange Format (GPX) export of trips, trails and saved destinations
File import	GPX and V-card contact files (VCF)
Maneuvers (turn-by-turn instructions)	Next turn, list of turns, view turn location, avoid turns and roads
Lane guidance	Lane guidance arrows, signpost and junction view
Saving destinations	Current location, preferred POI, home location
Traffic (requires RDS or SiriusXM Traffic)	Traffic flow (green/yellow/red), traffic event icons, traffic event list, rerouting
GPS coordinates	Current location or route guidance to coordinates
Touchscreen selection	On screen scrolling and destination selection
Avoidances	Selectable
Detours	Automatic or manually selectable
Compass	Full screen compass and directional heading markers

Table 19. Navigation

ITEM	DESCRIPTION
Voice prompts	Selectable (on/off), adjustable volume
Other features	Round trip guidance, trip summary, phone contact navigation, route simulation, low fuel navigation alert, graphical signpost display
Map database	North American map (for North America 49ST/CAL/CAN configurations). European map (for ENG/HDI-Europe configurations). Map optional (other destinations).

Table 20. Vehicle Status

ITEM	DESCRIPTION
Info	Current speed, air temperature,
Engine/Fuel Info	Oil pressure, miles/km to empty, miles since last service, Engine Idle Temperature Management System (EITMS)
TPMS	Tire pressure monitoring system
Ride Summary	Start time, end time, route time, stops, average speed, distance traveled, fuel used, mileage

NOTES

SETUP MENU
SOFTWARE UPDATES

NOTES

SATELLITE RADIO

SiriusXM radio is equipped on select vehicles in North America. See [Unresolved link \(id=118289\)](#). The radio includes over 200 digital channels of music, news, talk, entertainment and sports. The radio broadcast is over satellite (with ground repeaters) to provide consistent programming and signal quality nationwide without a break in coverage.

SiriusXM specialty services provide weather mapping, weather forecast data, fuel price information and traffic data service. SiriusXM traffic provides information for traffic events and road conditions. This data is integrated with the navigation system to provide speed flow along selected routes and notifications of traffic situations (such as accidents or lane closures).

NOTES

VOICE RECOGNITION

Voice recognition provides a hands-free alternative to operate many Boom! Box functions. Commands spoken into a headset microphone can instruct the system to play a media file, make a phone call, navigate to a destination, tune to a frequency or perform other features. Voice commands can be used to access functions that are otherwise locked out while the motorcycle is in motion.

To make full use of the system and to reduce distraction while riding, take time to learn voice commands for features that you commonly use.

NOTE

- *Voice recognition on 4.3 models is only supported for phone functions. The 4.3 phone commands are available in English only. Refer to [Unresolved link \(id=119834\)](#).*
- *Some vehicles do not have headset connectors. A P&A headset connection kit must be installed on the vehicle to use voice command functions.*

INTERCOM

The intercom allows the rider and passenger to talk with each other through the headsets. The intercom can be operated by pressing the PTT switch or by using voice operated transmission (VOX). When voice input is picked up by the

rider or passenger microphone, the intercom is automatically activated. This process is known as "breaking VOX".

The rider or passenger can initiate intercom communication. When the intercom is active, tuner and media volume are automatically reduced so the intercom can be heard through the headsets.

For privacy, the intercom is only heard through the rider and passenger headsets. It is not heard through the speakers.

Microphone sensitivity and headset volume can be adjusted. The microphone sensitivity (VOX) applies to both rider and passenger microphones. The rider and passenger headset volumes are adjusted independently.

NOTE

Some local governments prohibit or restrict the use of headset (helmet-mounted) speakers. Check with local authorities and obey all applicable laws and regulations.

[Unresolved link \(id=115682\)](#)

WHIM

Please read the Sena User's Guide for additional information pertaining to the wireless headset. Also check **Harley-Davidson.com > Owners > Infotainment** for the latest version of User's Guide and related information to Boom! Audio Bluetooth products.

Getting Started

Charge the wireless headset by connecting the supplied USB power & data cable into a computer USB port or USB wall charger. You can use any standard micro-USB cable to charge. The LED turns red while the headset is charging and turns blue when it is fully charged. It takes about 2.5 hours to be completely charged.

Powering On and Off

Press the Jog Dial and the Phone Button at the same time to power the headset either on or off. When powering on the headset, press the Jog Dial and the Phone button at the same time until the blue LED appears while hearing the ascending beeps. When powering off the headset, press the Jog Dial and the Phone Button at the same time until the red LED appears briefly and the headset turns off completely while hearing descending beeps.

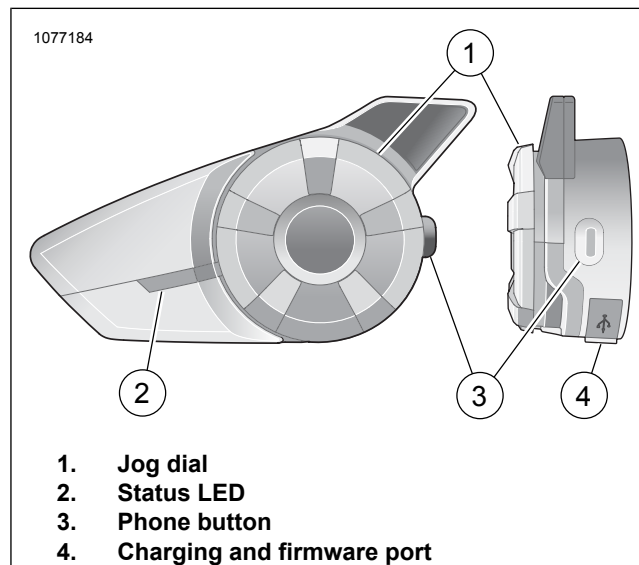


Figure 10. Boom Wireless Headset

Wireless Headset Setup

Before using the wireless headset with any Bluetooth devices for the first time, you will need to pair them together. For example, it can be paired with Bluetooth mobile phones, Bluetooth stereo devices such as MP3 players, or motorcycle specific Bluetooth GPS navigation, and with other Boom!

Audio Bluetooth headsets. This pairing operation is only required once for any Bluetooth device. The headset remains paired with the devices and automatically reconnects to them when they are within range. You will hear a high tone single beep and a voice prompt when the headset connects to the paired device automatically:

When a headset is paired to the motorcycle, it will say **Your Headset is Paired, Boom Audio Connected**. After this initial pairing, every time the headset connects to the motorcycle you will hear **Boom Audio Connected**.

When a headset is paired to a phone, it will confirm the pairing by saying **Your Headset is Paired..** After this initial pairing, every time the headset reconnects to the phone it will say **Phone Connected**.

1. Turn on wireless headset.
2. From the Home screen, select Setup on the touchscreen.

3. See Figure 11. Use the scroll control and scroll to Wireless Headset.



Figure 11. Scroll to Wireless Headset

4. See Figure 12. Select Wireless Headset.



Figure 12. Select Wireless Headset

NOTE

Place headset in pairing mode before selecting **Pair Rider Headset**. Press phone button for 5 seconds until red and blue LED's alternately flash.

5. Put **Headset** into pairing mode.
 - a. Touchscreen will display **Pairing in Process with Headset**.

NOTE

Rider's headset should be paired first followed by the passenger.

6. See Figure 13. Select Pair Rider Headset.

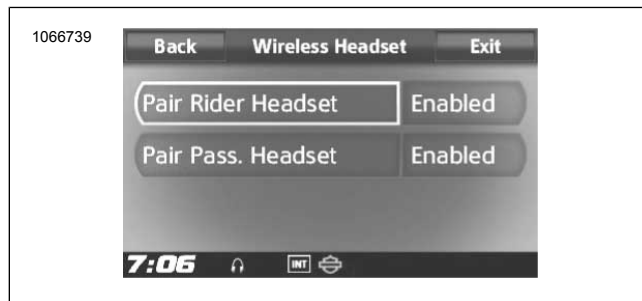


Figure 13. Pair Rider Headset

NOTE

Harley Davidson headsets will show up as Boom Audio and the version of its software. See owner's manual of non-Harley Davidson headset products for display options.

7. See Figure 14. Confirm wireless headset display information on the touchscreen. Select the model of wireless headset to pair.



Figure 14. Place Headset Into Pairing Mode

8. See Figure 15. Touchscreen will display confirmation status that the wireless headset has been Connected.

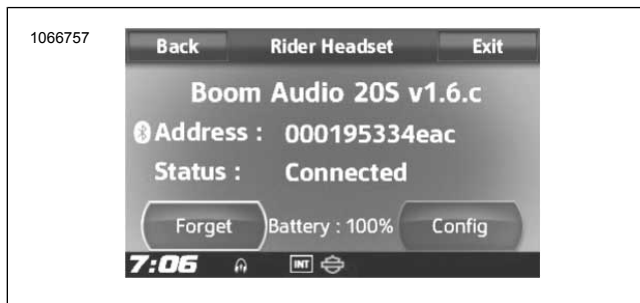


Figure 15. Paired Headset

9. Perform the same procedure for pairing the wireless headset for a passenger.

Headset to Headset Intercom Pairing

NOTE

When in pairing mode, do one device at a time in the area of the motorcycle and headset.

Please read the Sena User's Guide for information pertaining to the wireless headset to headset intercom set up and usage.

Headset Configurations

NOTE

The wireless headset must be turned on and paired with the system for the following configurations to appear on the touchscreen.

The headset configurations only affect headset performance when it is paired to a phone or other headset. They do not directly impact the performance of the headset when it is paired to the vehicle. The Sidetone setting is the only configuration option that will directly impact the headset when it is paired to a vehicle.

The 12 configuration modes can be accessed through the Boom! Box Infotainment system.

Select **Home > Setup > Wireless Headset > Manage Rider or Passenger Headset > Config** to manage headset configurations.



Figure 16. Headset Configuration

Smart Vol. Control: Smart Volume Control automatically changes the level of the speaker volume based on the level of the environmental noise. When it is disabled, volume is controlled manually. You can enable it by setting the sensitivity to low, medium, or high. Smart Volume Control responds to smaller environmental noises as the sensitivity level becomes higher. This factory setting is disabled.

SideTone: Sidetone is the sound of your own voice as picked up by your headset's microphone and reproduced in your own ear, by your own speaker. It helps you to naturally speak at the correct level according to varying helmet noise conditions. If this feature is enabled, you can hear what you are speaking during an intercom conversation or a phone call. This factory setting is disabled.

Voice Prompt: You can disable voice prompts, but the following voice prompts are always on:

- Voice prompts for configuration setting menu
- Voice prompts for battery level Indicator
- Voice prompts for factory reset
- Voice prompts for speed dial
- Voice prompts for FM radio functions

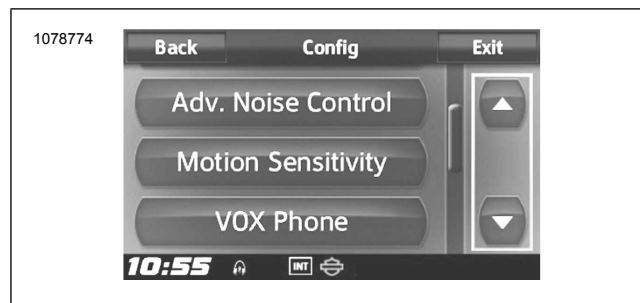


Figure 17. Headset Configuration

Adv. Noise Control: When Advanced Noise Control is enabled, the background noise is reduced during an intercom conversation. When it is disabled, the background noise is mixed with your voice during intercom. This factory setting is enabled.

Motion Sensitivity: Motion Sensor Sensitivity determines the sensitivity when you double tap on the surface of the Boom! Audio 20S EVO to enter voice command mode. The factory setting is low, but you may change it to high, or disable the feature.

VOX Phone: If this feature is enabled, you can answer incoming calls by simply saying a word loudly enough, unless you are connected to intercom. For example, when you hear a series of beeps for an incoming call, you can answer the phone by saying **Hello** or any other word loudly. However, the VOX Phone feature does not work if you are connected to the intercom. This feature is enabled from the factory but can be disabled through the configuration menu, Device Manager, or the Sena Smartphone App. If this mode is disabled, you have to tap the Jog Dial or the Phone Button to answer an incoming call.



Figure 18. Headset Configuration

HD Intercom: HD Intercom enhances the two-way intercom audio from normal quality to HD quality. HD Intercom will become temporarily disabled when you enter into a multi-way intercom. If this feature is disabled, the two-way intercom audio will change to normal quality. This factory setting is enabled.

Audio Multitasking: Audio Multitasking allows you to have an intercom conversation while simultaneously listening to music, FM radio, or GPS instructions. The overlaid audio is played in the background with reduced volume whenever there is an intercom conversation and will return to normal volume once the conversation is finished. If this feature is disabled, any incoming or outgoing intercom will interrupt your audio channel. This factory setting is enabled.

INT-Audio Sensitivity: When the Audio Multitasking setting is enabled, if you talk over the intercom while music is playing, then the music volume will be lowered to play in the background. You can adjust the intercom sensitivity to activate this background music mode. Level 1 has the lowest sensitivity and level 10 has the highest sensitivity. The factory setting is 6.



Figure 19. Headset Configuration

Nav. App Support: When Audio Multitasking is enabled, your smartphone's GPS application reduces in volume whenever there is an ongoing intercom conversation. To listen to your smartphone's GPS navigation clearly without this volume reduction, enable Navigation App Support. This factory setting is disabled.

Eight-way Intercom: Disabling the Eight-way Intercom optimizes the intercom performance for a small group up to four participants. Enabling the Eight-way Intercom optimizes the intercom performance for a larger group up to eight participants. This factory setting is disabled.

FM Station Guide: When FM Station Guide is enabled, FM station frequencies are given by voice prompts as you select preset stations. When FM Station Guide is disabled, the voice

prompts on FM station frequencies will not be given as you select preset stations. This factory setting is enabled.

Headset Software Version

NOTE

The Boom! Audio 20S EVO supports firmware upgrade function. Visit www.harley-davidson.com to check for the latest software downloads.

The information given in this topic is only informational. The exact Model/Software Version and Address will vary upon the product that is paired to the vehicle.

See Figure 20. When the wireless headset is properly paired it will confirm:

- Model/Software Version:
- Bluetooth Address:
- Status: Connected

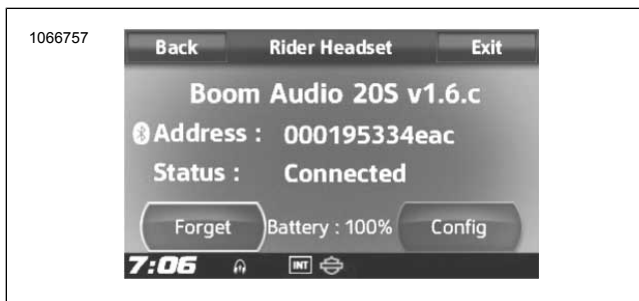


Figure 20. Paired Headset

Unpair Wireless Headset

1. Select **Home > Setup > Wireless Headset**
2. Select Manage **Rider** or **Passenger** headset.
3. See Figure 21. Press **Forget** to unpair rider or passenger wireless headset from the Boom system.



Figure 21. Delete Paired Headset

Reset Factory Headset Settings

NOTE

When performing this procedure, the link between the Boom Infotainment system and headset will be broken. The wireless headsets must be paired again for system communications to operate properly.

1. To restore the Boom! Audio 20S EVO to factory default settings, press and hold the Phone Button for 12 seconds until the LED shows solid red and you hear double beeps. You will hear a voice prompt saying **Factory reset**.

2. Within 5 seconds, press the Jog Dial to confirm reset. The headset will be restored to factory settings and switched off automatically. You will hear a voice prompt saying **Headset reset, good-bye**.
3. If you press the Phone Button or don't press the Jog Dial within 5 seconds, the reset attempt is canceled and the headset returns to stand-by mode. You will hear a voice prompt saying **Canceled**.
4. Unpair current wireless headset(s) in Boom system. See Unpair Wireless Headset in this section.
5. Perform pairing procedure. See Wireless Headset Setup in this section.

Fault Reset

When the Boom! Audio 20S EVO is not working properly or is in faulty status for any reason, you may reset by pushing the pin-hole reset button at the back of the headset main unit. Insert a paper clip into the reset pin-hole and press the reset button for a second with light pressure. The Boom! Audio 20S EVO will be switched off, and you have to turn the system back on and try again. However, this will not restore the headset to factory default settings.

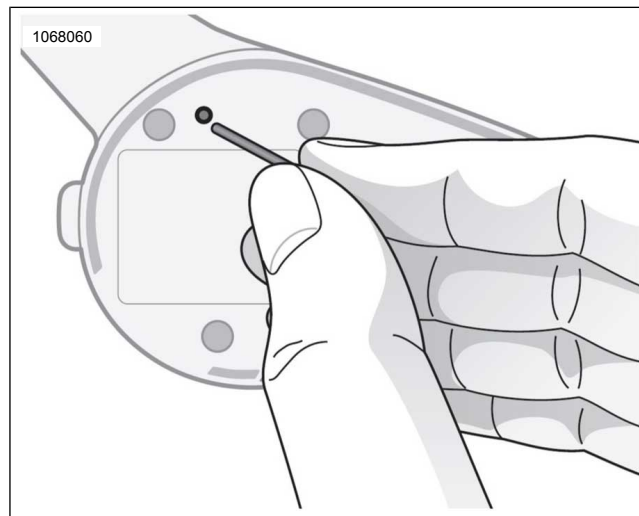


Figure 22. Fault Reset

CITIZEN BAND (CB) RADIO

⚠ WARNING

Set CB channel, squelch threshold and volume before riding to minimize adjustments on the road. Distractions can lead to loss of control, resulting in death or serious injury. (00089a)

NOTICE

Operating the CB radio without an antenna or with a broken antenna cable can result in damage to the transmitter circuitry. (00176a)

NOTICE

There are no adjustments internal to the CB transceiver chassis that can be performed without risking non-compliance with Federal Communications Commission (FCC) rules. Refer to the original equipment manufacturer for any service required during the warranty period. For transmitter service after the warranty period, refer to a certified repair service. Any frequency determining components, such as crystals, or power determining semi-conductors, etc., should only be replaced with the original component manufacturer's part or equivalent. Substitutes can result in violation of FCC rules. (00175a)

Some models in select regions have a CB module. The CB radio can be used to communicate with other CB-equipped motorcycles (or other CB users) on any of the 40 Citizen Band channels.

Regulations for CB operation, specific frequencies or power output may be unique for different regions. Check local laws and regulations before operating the CB radio. In the United

States, read **Part 95, FCC Rules and Regulations** before operating your transmitter.

NOTES

FAVORITES

SETTING A FAVORITE

SELECTING A FAVORITE

NOTES

VEHICLE STATUS

NOTES

2018 LIMITED RADIO WARRANTY

Harley-Davidson warrants that your Harley-Davidson radio will be free from factory defects in factory materials and workmanship, under normal use and service, for a period of twenty-four (24) months starting from the earlier of (a) the date of initial retail purchase of the motorcycle on which the radio is installed, or (b) the third anniversary of the last day of the model year of the motorcycle on which the radio is installed. Any unexpired portion of this limited warranty will be transferred to subsequent owner(s), upon the resale of the motorcycle during the limited warranty period. If the motorcycle was used as a demonstrator or company motorcycle, then the limited warranty period may have started and/or expired prior to the initial retail sale. See an authorized Harley-Davidson Dealer for details.

This limited warranty does not cover defects or damage due to abuse, misuse or improper installation, or any radio on a motorcycle which has been registered with Harley-Davidson as a collector's vehicle. Radios with a touchscreen have a replaceable protective film. Damage to the radio due to use without this screen protector is not covered under warranty. The screen protector itself is a serviceable wear part which can be purchased at an authorized Harley-Davidson dealer. Wear or subsequent damage to the screen protector is not covered under warranty. Also, the limited warranty does not cover syncing issues or an improper functioning radio caused by an incompatible phone or other media storage device (MP3,

jump drive, etc.). See an authorized Harley-Davidson dealer for details. Use of aftermarket parts may void all or parts of your limited warranty.

This limited warranty does not cover repairs under certain conditions. Examples include:

- Loss of personal media, software or data.
- Failure to provide proper installation environment.
- Damage caused by abnormal use, unauthorized modification, computer viruses, or installation of unauthorized software, peripherals and attachments; unauthorized, unapproved or incompatible devices or upgrades; or malfunction of a mobile phone or digital media device, including inadequate signal reception by the external antenna, viruses or other software problems.

To obtain warranty service, return your motorcycle with sound system intact, at your expense, within the limited warranty period to an authorized Harley-Davidson dealer. Authorized Harley-Davidson dealers should be able to provide warranty service during normal business hours depending upon the workload of the authorized dealer's service department and the availability of necessary parts.

The remedy for breach of this warranty is expressly limited to the repair or replacement (**which may include a refurbished replacement radio**), without charge for parts and labor, of any part that proves to be defective, AND DOES

NOT EXTEND TO LIABILITY FOR CONSEQUENTIAL DAMAGES, COSTS OR EXPENSES, INCLUDING LOSS OF TIME, INCONVENIENCE, COMMERCIAL LOSS, OR LOSS OF USE OF THE VEHICLE, RESULTING FROM ANY PART THAT PROVES TO BE DEFECTIVE.

THERE IS NO OTHER EXPRESS WARRANTY ON THE RADIO. ANY IMPLIED WARRANTY RELATING TO THIS RADIO, INCLUDING WARRANTIES OF MERCHANTABILITY OR FITNESS FOR A PARTICULAR PURPOSE, IS EXPRESSLY LIMITED TO THE DURATION OF THIS LIMITED WARRANTY.

TO THE FULLEST EXTENT ALLOWED BY LAW, HARLEY-DAVIDSON AND ITS AUTHORIZED DEALERS SHALL NOT BE LIABLE FOR LOSS OF TIME, INCONVENIENCE, LOSS OF MOTORCYCLE USE, COMMERCIAL LOSS OR ANY OTHER INCIDENTAL OR CONSEQUENTIAL DAMAGES.

Some states do not allow the exclusion or limitation of incidental or consequential damages, so the above limitation or exclusion may not apply to you.

Other Rights

This warranty gives you specific legal rights, and you may also have other rights which vary from state to state.

2018 AUSTRALIA/NEW ZEALAND LIMITED RADIO WARRANTY

Your Consumer Rights

The benefits given to you under this H-D Radio Warranty are additional to, and do not detract from, other rights and remedies that you may have in respect of the radio or its installation under Australian and New Zealand laws, including consumer protection laws.

In Australia, our goods come with guarantees that cannot be excluded under the Australian Consumer Law. You are entitled to a replacement or refund for a major failure and compensation for any other reasonably foreseeable loss or damage. You are also entitled to have the goods repaired or replaced if the goods fail to be of acceptable quality and the failure does not amount to a major failure.

In New Zealand, our goods also come with guarantees that cannot be excluded under the New Zealand Consumer Guarantees Act.

Warranty

This warranty is provided by Harley-Davidson Motor Company P.O. Box 653, Milwaukee, Wisconsin 53201, U.S.A, phone: +1 (414 343-4056) ("Harley-Davidson").

Harley-Davidson warrants that an authorised Harley-Davidson dealer will repair or replace your Harley-Davidson radio if it is found to be defective in factory materials or workmanship, under normal use and service, during the warranty period set out below.

Such repair or replacement will be Harley-Davidson's sole obligation and your sole remedy under this H-D Radio Warranty, however you may have other rights under Australian and New Zealand laws, as described above.

Note that goods presented for repair may be replaced by refurbished goods of the same type rather than being repaired. Refurbished parts may be used to repair goods.

Warranty Period

The warranty period is a period of twenty-four (24) months starting from the earlier of:

- (a) the date of delivery of the motorcycle on which the radio is installed by an authorised Harley-Davidson dealer to the first retail purchaser; or
- (b) the third anniversary of the last day of the model year of the motorcycle on which the radio is installed (if not sold to a retail purchaser before that date).

Any unexpired portion of this H-D Radio Warranty will be transferred to subsequent owners, upon the resale of the motorcycle during the limited warranty period. See the

OWNER CONTACT INFORMATION section of this Owner's Manual for information regarding notification of ownership changes.

Note: If the motorcycle was used as a demonstrator or company motorcycle, then the warranty period may have started and/or expired prior to the initial retail sale. See an authorised Harley-Davidson dealer for details.

Exclusions

This H-D Radio Warranty does not cover defects or damage due to abuse, misuse or improper installation, or any radio on a motorcycle which has been registered with Harley-Davidson as a collector's vehicle. Radios with a touchscreen have a replaceable protective film. Damage to the radio due to use without this screen protector is not covered under warranty. The screen protector itself is a serviceable wear part which can be purchased at an authorized Harley-Davidson dealer. Wear or subsequent damage to the screen protector is not covered under warranty. Also, the limited warranty does not cover syncing issues or an improper functioning radio caused by an incompatible phone or other media storage device (MP3, jump drive, etc.). See an authorised Harley-Davidson dealer for details.

Obtaining Warranty Service

To obtain warranty service, return your motorcycle with sound system intact, at your expense, within the warranty period to an authorised Harley-Davidson dealer.

Harley-Davidson's network of authorised dealers is large, and continues to expand. To find current contact information for your nearest authorised dealer, visit our website at www.h-d.com.au.

ACRONYMS AND MEASUREMENT SYMBOLS

See Table 21. explains the acronyms used throughout this manual.

Table 21. Acronyms

ACRONYM	DESCRIPTION
AVC	Automatic volume control
CB	Citizens band
CVO	Custom Vehicle Operations
EITMS	Engine idle temperature management system
GPS	Global positioning system
POI	Point of interest
PTT	Push to talk
RDS	Radio Data System
RBDS	Radio Broadcast Data System
THD	Total harmonic distortion
TMC	Traffic message control
TPMS	Tire pressure monitoring system
VOX	Voice operated transmission
WHIM	Wireless headset interface module

H-D U.S.A., LLC TRADEMARK INFORMATION

Bar & Shield, Boom!, Cross Bones, Cruise Drive, CVO, Digital Tech, Digital Technician, Digital Technician II, Dyna, Electra

Glide, Evolution, Fat Bob, Fat Boy, Forty-Eight, Glaze, Gloss, H-D, H-Dnet.com, Harley, Harley-Davidson, HD, Heritage Softail, Iron 883, Low Rider, Milwaukee-Eight, Night Rod, Nightster, Night Train, Profile, Reflex, Revolution, Road Glide, Road King, Road Tech, Rocker, Screamin' Eagle, Seventy-Two, Softail, Sportster, Street Glide, Street Rod, Sun Ray, Sunwash, Super Glide, SuperLow, Supersmart, Switchback, SYN3, TechLink, TechLink II, Tour-Pak, Tri Glide, Twin Cam 88, Twin Cam 88B, Twin Cam 96, Twin Cam 96B, Twin Cam 103, Twin Cam 103B, Twin Cam 110, Twin Cam 110B, Twin-Cooled, Ultra Classic, V-Rod, VRSC and Harley-Davidson Genuine Motor Parts and Genuine Motor Accessories are among the trademarks of H-D U.S.A., LLC.

PRODUCT REGISTERED MARKS

Apple, Alcantara S.p.A., Allen, Amp Multilock, Bluetooth, Brembo, City Navigator, Delphi, Deutsch, Dunlop, Dynojet, Fluke, G.E. Versilube, Garmin, Gunk, Hydroseal, Hylomar, iPhone, iPod, Kevlar, Lexan, Loctite, Lubriplate, Keps, K&N, Magnaflux, Marson Thread-Setter Tool Kit, MAXI fuse, Molex, Michelin, MPZ, Multilock, nano, NGK, Novus, Packard, Pirelli, Permatex, Philips, PJ1, Pozidriv, Road Tech, Robinair, S100, Sems, SiriusXM, Snap-on, Teflon, Threadlocker, Torca, Torco, TORX, Tufail, Tyco, Ultratorch, Velcro, X-Acto and XM Satellite Radio are among the trademarks of their respective owners.

NOTES

Index

A

Acronyms.....49

C

Customer service.....1

E

Emergency CB Operation.....4

Emergency Phone Number.....4

G

Glossary.....49

M

Manual.....1

Measurement Symbols.....49

Menu.....25

N

Navigation.....3

P

Pre-Ride Checklist.....4

Q

Quick Start Guide.....5

S

Safety.....3, 4

4

Satellite Radio.....27

Setup.....25

Software.....25

Specifications.....15

Index

T

Trademarks.....49

U

Updates.....25