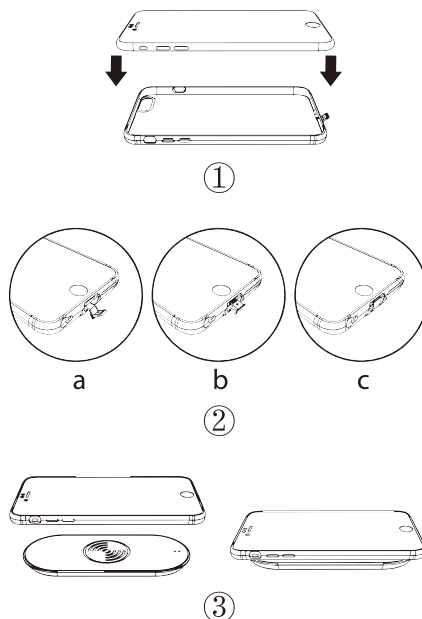


## QUICK START GUIDE & SUPPORT

Wireless charging  
receiver case for iPhone



### Quick Start Guide:

#### Installation:

- ① Put the phone into the case
- ② a→b→c Plug the connector into the dock
- ③ Put the embedded phone onto the wireless charging pad.

Uninstallation: Follow the reversed step: ② c→b→a→①

⚠ Unplug the connector before taking off the case.

#### Introduction:

This product is a Qi-compatible wireless charging receiver and enables iPhone 6/6 plus to charge wirelessly. Products with Qi mark, all comply with wireless charging standard specification of WPC. It works with electronic products that match with the wireless charging communication protocol (depending on the machines, in rare cases, it may appear errors. When using this product, please read the instruction manual carefully.)

#### Tips for use:

- 1: A wireless charging transmitter is required to realize the function of this product. Please refer to transmitter manual.
- 2: After install this product, put the phone in transmitter charging area and charging will start automatically.
- 3: Drop the phone to the central area of charging transmitter where provides higher efficiency and current.
- 4: When the phone is almost fully charged, it will stop charging.
- 5: This product has the phone case function, there is no need to apply another case.

### Applications:

This product is compatible with universal Qi wireless charging standard. More and more companies are joining in to set wireless charging transmitters in public places. People don't have to carry cables and adapters. Simple drop the phone and charging starts.



Offices



Hotels



Restaurants



Waiting halls

### Warnings:

To prevent harm and property loss, please read the following instructions carefully before using this product.

Indicating signs:



Warning! There are contents concerning the occurrence of wound and property damage.

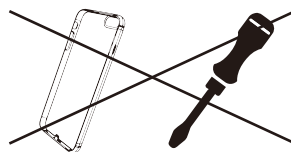


Attention! There are contents concerning the occurrence of property damage.

- ⊘ Do not use it in places out of -20°C to 50°C temperature range. It may damage the product.
- ⊘ Do not use it in places where the sun shines directly or with high temperature. It may lead to damage.
- ⊘ Do not use it in wet and dusty places. It may lead to heat, fire and electric shock.
- ⊘ Do not lay the product in places that are easy to fall. It may damage the product.
- ⊘ Do not put it into water or any other liquid, do not make it wet. It may lead to damage of the product.



Do not dismantle!



Dismantling the product will cause irreversible damage.

### Limited Warranty:

There is a limited warranty to the original retail purchaser of this product. Should the product or any part thereof be proven defective in material or workmanship within 1 year from the date of original purchase, such defects will be repaired or replaced, at the company's option, without charge for parts or labor.

### Certifications:



### Trademark disclaimer:

Product names, logos, brands and other trademarks referred to within this product are the property of their respective trademark holders. These trademark holders are not affiliated with our company, our products, or our website. They do not sponsor or endorse our materials.

## **FCC Statement**

This equipment has been tested and found to comply with the limits for a Class B digital device, pursuant to Part 15 of the FCC Rules. These limits are designed to provide reasonable protection against harmful interference in a residential installation. This equipment generates uses and can radiate radio frequency energy and, if not installed and used in accordance with the instructions, may cause harmful interference to radio communications. However, there is no guarantee that interference will not occur in a particular installation. If this equipment does cause harmful interference to radio or television reception, which can be determined by turning the equipment off and on, the user is encouraged to try to correct the interference by one or more of the following measures:

- Reorient or relocate the receiving antenna.
- Increase the separation between the equipment and receiver.
- Connect the equipment into an outlet on a circuit different from that to which the receiver is connected.
- Consult the dealer or an experienced radio/TV technician for help.

This device complies with part 15 of the FCC Rules. Operation is subject to the following two conditions: (1) This device may not cause harmful interference, and (2) this device must accept any interference received, including interference that may cause undesired operation.

Changes or modifications not expressly approved by the party responsible for compliance could void the user's authority to operate the equipment.