

User Manual

MUSOS 51806378

1. Getting Start

1.1 Setting up the 51806378

Download the MUZO Player App to your ISO system(iOS 6.0 or later Required) from the App Store or for the Android system from the Google Play Store.



Before using the MUZO Player App, make sure that the 51806378 is properly connected and in working condition.

1.2 Specifications

Product Size	270X83X135MM
Unit Weight	N.W:2.1KGS/Unit
Speaker drivers	2.1 HI-FI System: 1 set 10W Subwoofer(3.5")+2sets 5W Tweeters(1.75")
Audio effect	DSP 3D Surround sound
Battery	3 sets SAMSUNG 18650 Battery, 2600MAH each, total Capacity: 7800MAH
Power Supply	DC adaptor: 15V/2A;
Play Time	Up to 12Hours against 100% Volume, 20Hours against 70% Volume

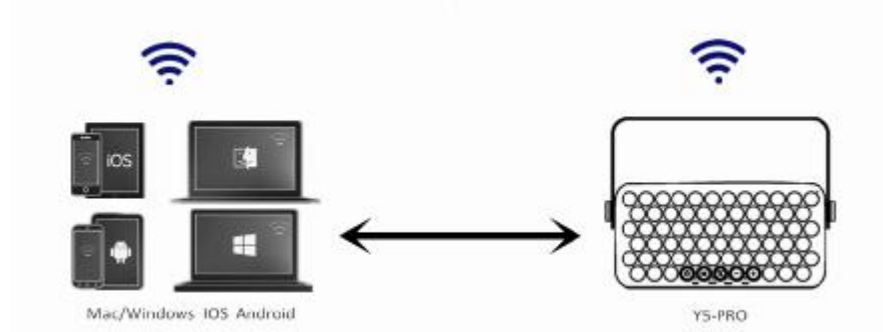
2. Playing Modes, there are total five playing modes

Play Modes	Features	Led Light Color
WIFI Mode	Peer to Peer direct connecting and playing	White
	Network connection 1)connecting internet via Wifi Router; 2)Independent play or multiple play via MUZO Player; 3)Play cloud music via WIFI internet; 4)Play global internet radios; 5)Play music via Pandora, Spotify, TuneIn, iHeart Radio etc. social media; 6)Alarm Clock setting via MUZO Player;	
	Social communication 1)One MUZO Player control more than two sets 51806378 system, play different song or same song available; 2) Different ISO or Android system(iPhone/iPad etc) control one or more sets 51806378 available, enjoy the music what you like;	
Bluetooth Mode	Bluetooth connection and play music, Max distance: up to 60M;	Blue
SD Card Mode	Directly Reading Micro SD or sharing on MUZO Player;	White
Line in Mode	Audio cable connecting to Computer, Mobile, Ipad etc any Line In device;	Green
Recording Mode	Record the song when you sing, saving to Micro SD card automatically	White

2.1 WiFi Mode

1) Peer to Peer Direct connection

Using Peer to Peer Direct Mode in a non-Wi-Fi environment. Wireless local music play can be realized after successful peer to peer connection via AirPlay or MUZO Player



2) Network Connection

Network connection is required in Wi-Fi environment via Wifi Router, which both local and online music can be played. once Network connection is successfully set, all devices (e.g., your smart phone, tablet PC, PC, MAC, etc.) within the same Wi-Fi network can directly play music without repeatedly log in and out.

Note: Avoid using the speaker in a complicated public Wi-Fi network environment (e.g. airport), this may lead to an unstable connection because of the interference (play buffer, connection failure, etc.)

What the MUZO Player can do via same Wifi Router network

- a) Independent or multiple play;
- b) Play cloud music via WIFI internet;
- c) Play global internet radios;
- d) Play music via social media such as Pandora, Spotify, TuneIn, iHeart Radio etc.
- e) Alarm Clock setting via MUZO Player;



2.2. Bluetooth Mode

Press mode button once to change to Bluetooth Mode, BT/AUX led light will be slow blinking in blue color, In your device setting, turn Bluetooth ON, pairing with "MUSOS 51806378", after paired successfully, any music can be played on your device.

2.3. SD Card Mode

Insert your Micro SD card to the SD card Slot at the back of 51806378, the songs in the SD card can be played directly, the song will also share to MUZO Player and can be played via MUZO Player, white Led light is slow blinking;

2.4 AUX IN Mode

Press Mode button once again from SD card Mode to AUX IN mode, BT/AUX light led will be slow blinking in green color, Connect any device to 51806378 with Audio cable, and play music;

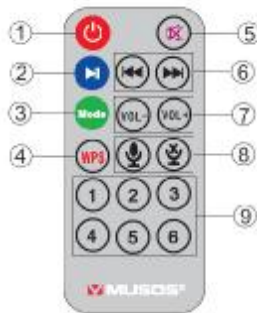
2.5 Recording Mode

- 1) Insert Micro SD card first, holding "Play/Pause" button for 3 seconds, the Record white LED will be slow blinking, then it start recording whatever you are speaking, the record files will be saved to Micro SD (compatible with max capacity 64GB)
- 2) Open the MUZO Player, connection with the 51806378, and you can find and play your recording files in Micro card;

3.Remote Controller

51806378 is not only controlled by MUZO player, but also remote controlled, Quick guide for remote panel as below

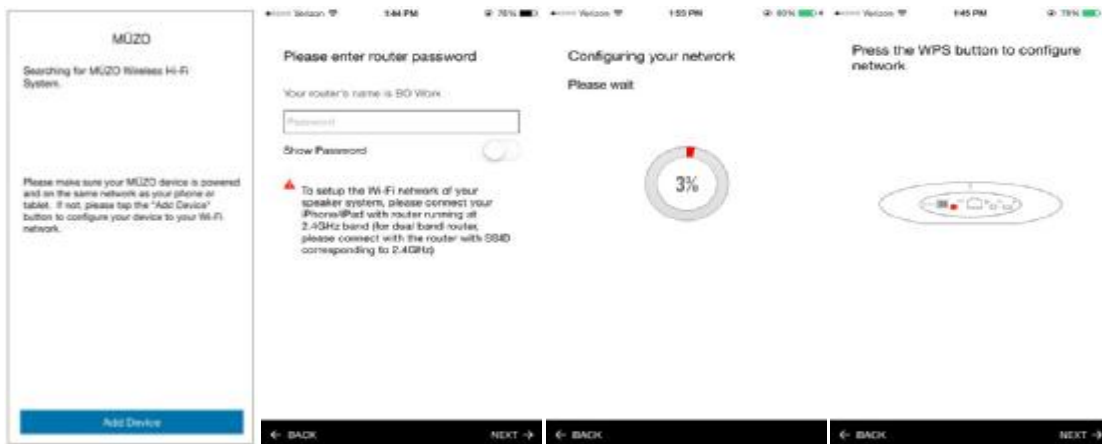
- 1.Power button/Sleep/Reboot (need holding 3 seconds for Sleep mode)
- 2.Pause/Play
- 3.Modes switch
- 4.WPS: researching Wi-Fi connection (need to work with MUZO player)
- 5.Mute button
- 6.Previous track/Next track
- 7.Volume down/volume up
- 8.Recording/Stop Recording (only be used once you insert Micro SD card)
- 9.Preset/Reset channels as your Favorite



4.Configuring your 51806378

4.1 Install and open the MUZO Player

MUZO Player will search 51806378 WIFI connection automatically, if it does not detect an existing 51806378, the following interface will show:



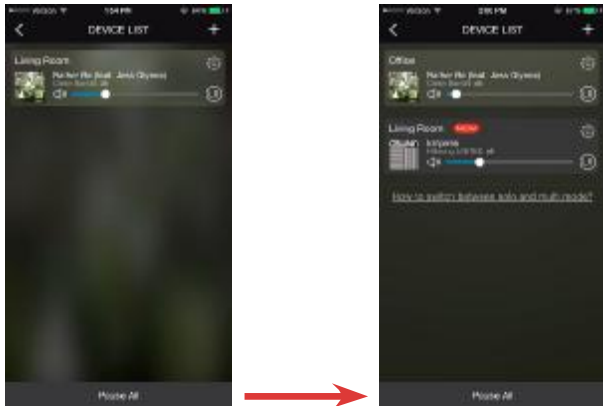
1)Next click "Add Device," input the password of the WIFI router Which is already connected with your device such as iPhone ,

2)Press the "WPS" button at the back of 51806378 at the same time, waiting 8–15 seconds. there will be a voice to notify you if the connection is successful or unsuccessful

4.2 Adding another 51806378

If you want to add another 51806378 to your Wi-Fi network, press "+" on the top right corner of MUZO Player and it will take you through the same instructions to configure the 51806378 to the Wi-Fi network

Click "+" on the "DEVICE LIST" interface to add the device according to the steps. After it is finished, the newly added device will appear in the "DEVICE LIST" as below:



4.3 Naming your 51806378

After you first add the 51806378, it will show the interface and you can name your 51806378 such as Bedroom etc, or Customized the name by yourself.

e.g. if your speaker is in the family room, you can choose "Family Room" as its label.



4.4 Touring your MUZO Player

The easy-to-use MUZO Player turns your smart device such as iPhone into a remote to control music playing on all your 51806378s.

a)Control music all in one place

The Dashboard can see what music is playing in each room

b)Multi-Rooms

Multiple 51806378 lets you play music in sync or play different songs in different rooms

On the "DEVICE LIST" interface, you can glance the situation of all the devices, like the song, voice volume, voice channel. As the pictures below:



Now you can playback music to both of the speakers; there is nearly zero second delay after adding a slave speaker.

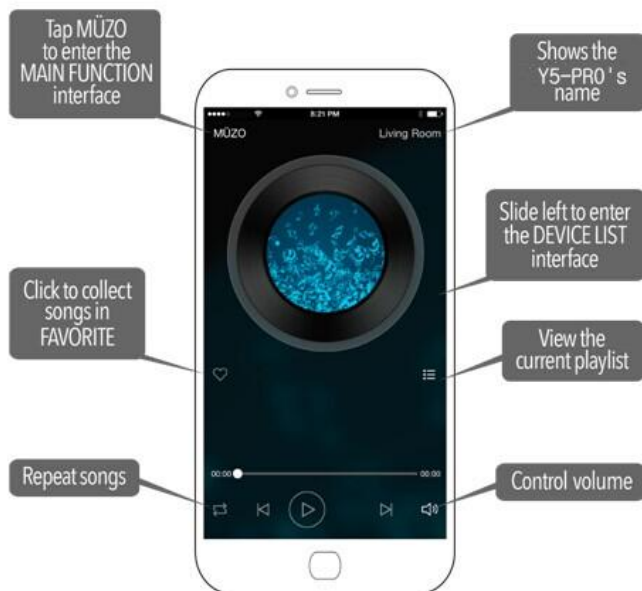


c) Multi-Channels

You can listen to the internet radio and your songs with another 51806378 within one room at the same time;

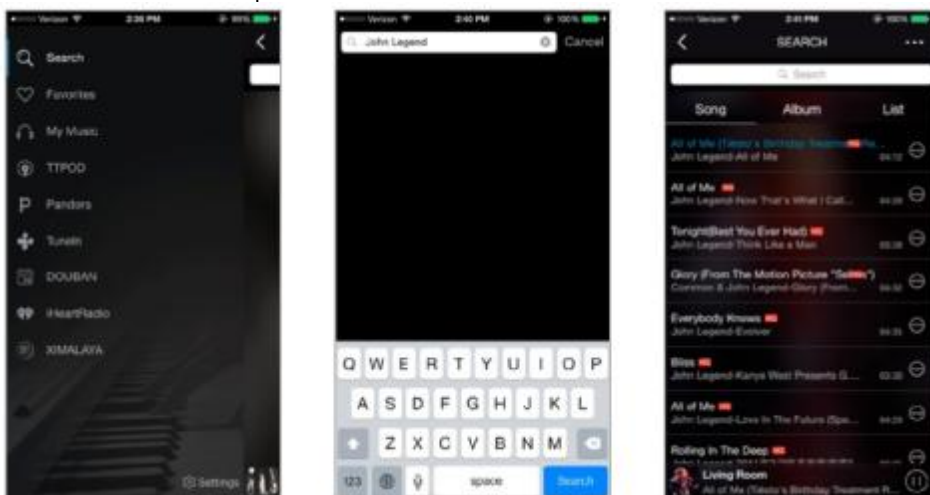
d) Music playback

Preset music playlists can be played and controlled by your Smart device or 51806378 itself



4.5 Searching Cloud Music

all your favorite songs and artists can be searched via the cloud music of MUZO Player. For example, input John Legend, and all his songs will be found within the music services as pictured below:



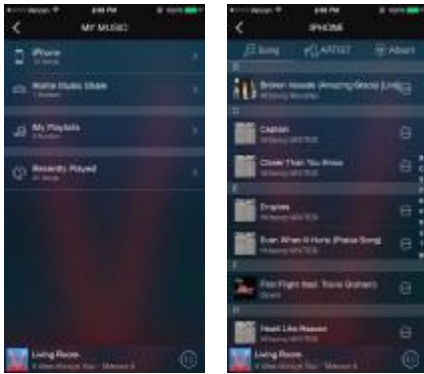
4.6 Favorite Songs

The Favorite function allows you to freely collect your favorite songs, Just click the heart near the bottom left of the screen, if you want to listen to it next time, just open the Favorite on the main menu, no need to search for the song again.



4.7 My Music

Through My Music function, you can playback your local music on your smart device such as iPhone, iPad or Android device.



4.8 My Playlists

You can add or delete a playlist.

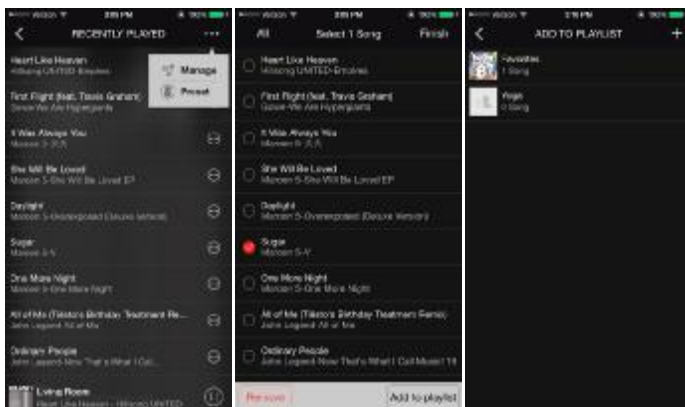


4.9 Recently Played

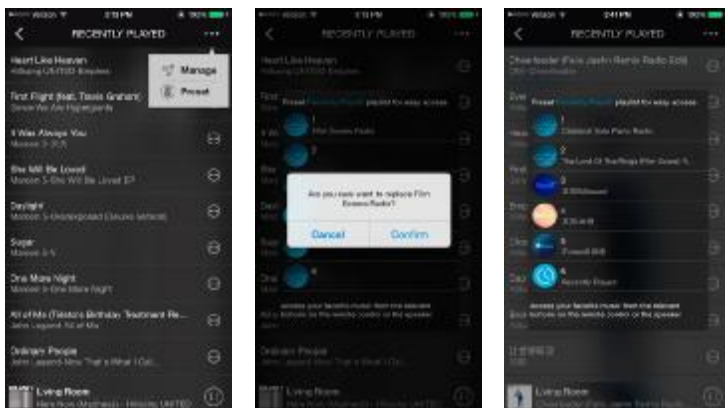
1) You can collect the songs you recently listened to and create a playlist and preset it to the speakers.



2) You can add or remove a song to a playlist



3) You can set the recently created playlist to a preset playlist. (e.g. Set Channel 6 as your most recently created playlist).



5 Music Service

5.1 Spotify

Spotify is a digital music service that gives you access to millions of songs. To stream Spotify, you will need a Spotify Premium account. You can control music play through your Spotify app. Go to the Connect screen and select your 51806378. For example "Family Room". Once you connect, you can stream Spotify to any room connected with a 51806378.

5.2 Pandora

To access Pandora, tap Pandora on the main function control interface, log into your existing account, and play and control music play from your phone. If you do not have an existing Pandora account, go to www.pandora.com to register for a free account. If you are not located in the US or New Zealand, please use the proxy link.

5.3 iHeartRadio

iHeartRadio is an Internet radio platform owned by iHeartMedia, Inc. Founded in April 2008 as the website iheartmusic.com, iHeartRadio now aggregates audio content from over 800 local iHeartMedia radio stations across the United States, as well as hundreds of other stations and various other

media.

5.4 TuneIn

Online radio TuneIn is powerful, it can provide a collection of tens of millions of online radio around the world, click TuneIn on the main function control interface: choose your favorite programs, start a wonderful radio trip

Remark: All above service has been Authorized by official social Media.

6.Regarding WiFi & Bluetooth

While Bluetooth is widely supported by portable devices, including smart phones and tablets, you can only stream to one device at a time, usually within a 30-foot range.

Apple Airplay uses Wi-Fi, which has a longer range, and you can stream from a mobile device with Apple's iOS software to one speaker or from a computer running iTunes to speakers in up to six rooms. Android and Windows-powered devices use DLNA to connect to your home network.

The 51806378 is very flexible. Not only can be connected by Bluetooth, but also each device acts as a Wi-Fi hotspot to extend the wireless range of the system. This system can stream music from different sources in up to multiple locations in your home all controlled by your smart device (iOS and Android).

Since Wi-Fi enables 51806378 to stream music directly from the cloud, you don't even need your smart phone around once the initial setup is done. The music will not stop playing when phone is off or get interrupted by the incoming calls. With Bluetooth you will always need your phone around to control music play and the music will stop playing when the phone is off or when you receive phone calls.

7. Warranty Info

Your 51806378 is guaranteed to be free of defects for 12 months from date of purchase. Simply return the defective 51806378 with your original receipt for free repair or replacement. Warranty void if the speaker has been tampered with.

FCC Caution:

This device complies with part 15 of the FCC Rules. Operation is subject to the following two conditions: (1) This device may not cause harmful interference, and (2) this device must accept any interference received, including interference that may cause undesired operation.

Any Changes or modifications not expressly approved by the party responsible for compliance could void the user's authority to operate the equipment.

Note: This equipment has been tested and found to comply with the limits for a Class B digital device, pursuant to part 15 of the FCC Rules. These limits are designed to provide reasonable protection against harmful interference in a residential installation. This equipment generates uses and can radiate radio frequency energy and, if not installed and used in accordance with the instructions, may cause harmful interference to radio communications. However, there is no guarantee that interference will not occur in a particular installation. If this equipment does cause harmful interference to radio or television reception, which can be determined by turning the equipment off and on, the user is encouraged to try to correct the interference by one or more of the following measures:

- Reorient or relocate the receiving antenna.
- Increase the separation between the equipment and receiver.
- Connect the equipment into an outlet on a circuit different from that to which the receiver is connected.
- Consult the dealer or an experienced radio/TV technician for help.

This equipment complies with FCC radiation exposure limits set forth for an uncontrolled environment. This equipment should be installed and operated with minimum distance 20cm between the radiator & your body.