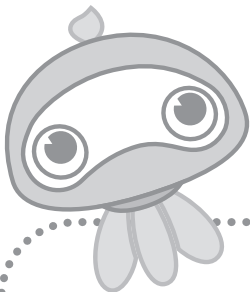




Gululu

User Guide



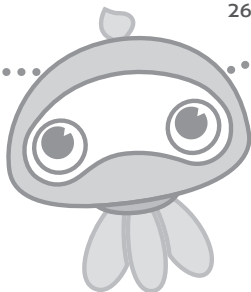
**Before using Gululu Interactive Bottle,
please thoroughly read the Gululu user guide to ensure
proper installation and operation of the product.
And keep the user guide for future reference.**

**Also, we recommend to hand-wash Gululu Interactive Bottle
with cold water before initial use.**

More information in the online manual and setup video is
available at: **www.mygululu.com**

CONTENTS

INTRODUCTION	1
OVERVIEW	2-4
GETTING STARTED	5-6
USING THE GULULU APP	7-10
USING GULULU INTERACTIVE BOTTLE	11-18
CLEANING	19-20
SAFETY INFORMATION	21-22
WARRANTY	23
TECH SPEC	24-25
SUPPORT	26

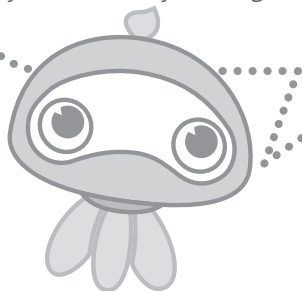


INTRODUCTION

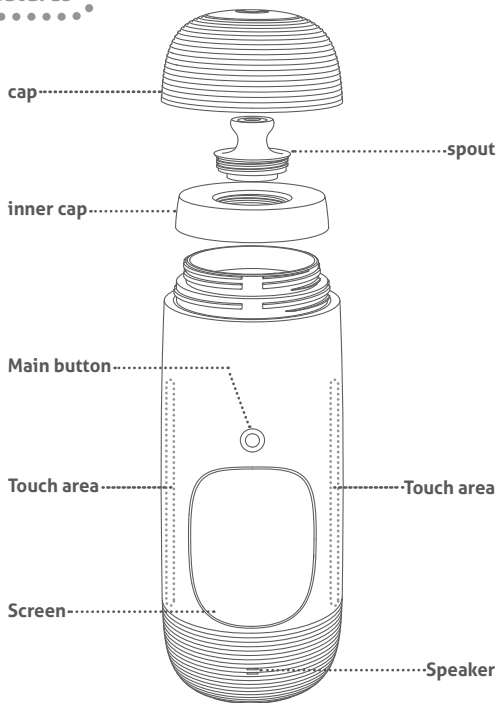
Gululu encourages kids to self-cultivate healthy water drinking habits in interactive and fun ways. Kids choose a virtual pet with a unique personality and begin a journey to healthy habits.

When Gululu Interactive Bottle is in school mode, the drinking status and records are still recorded. Using seamless integration of hardware and software, Gululu can even tell whether kids are drinking water or sneakily watering the plants.

All the materials are BPA-free and comply with FDA (U.S.) standards, excluding the screen lens. The modular design is detachable and makes cleaning an easy task. Also, Gululu Interactive Bottle is 100% water-proof and leak-proof. The soft exterior prevents the inevitable fall of the bottle when kids are playing. Light up your child's day and begin a journey with the vibrant Gululu!

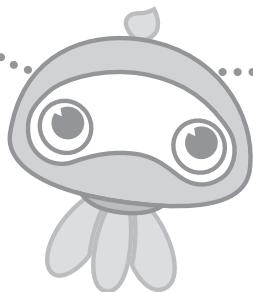


Bottle features



GETTING STARTED

1. Place Gululu Interactive Bottle close to your mobile phone.
2. Make sure your mobile phone is under a stable, home Wi-Fi connection.
3. Press and hold down the main button until the screen lights up to turn on Gululu Interactive Bottle.
4. Press the main button to show the ID of your Gululu Interactive Bottle.
5. Follow the instructions in Gululu App to set up.



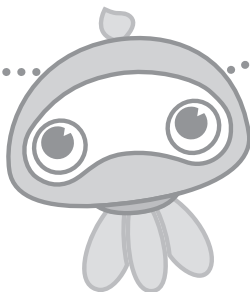
If you do not connect Gululu Interactive Bottle to your phone, the pet can still interact with the kids, but will not grow up through the process.

Gululu Interactive Bottle can only be connected with one account at a time.

Install the free Gululu App on your mobile phone:

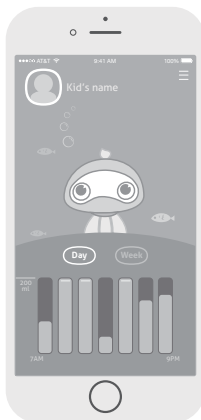


Gululu App

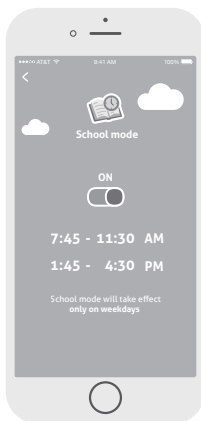


USING THE GULULU APP

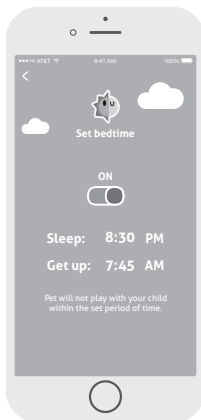
Drinking status: When you want to review your child's drinking status, open the Gululu App and find the day's water consumption on the home page. You can also check your kids' weekly drinking patterns in the App.



School mode: Gululu Interactive Bottle can be set into silence to avoid being a distraction during school hours. You can set up the time in the setting page.

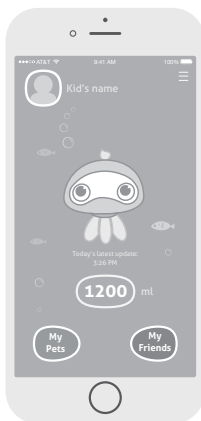


Set bedtime: To encourage kids to maintain a healthy bedtime routine, pets fall asleep on the home page when it is time for bed. You can find the bedtime setting in the wetting page.



Data are uploaded only when Gululu Interactive Bottle is connected to the setting Wi-Fi. When you want to add a new Wi-Fi or change your Wi-Fi, go to setting page to set up.

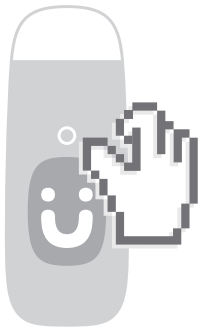
Click the photo to connect a second bottle with your mobile phone.



USING GULULU INTERACTIVE BOTTLE

To turn on Gululu Interactive Bottle: Press the main button firmly until the screen lights up. You can switch from the home page to other pages to check the latest status of your kids' adventure by pressing the main button for 3 seconds.

Press the main button

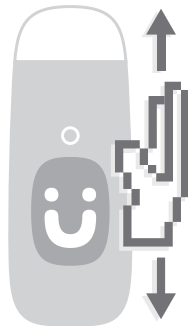
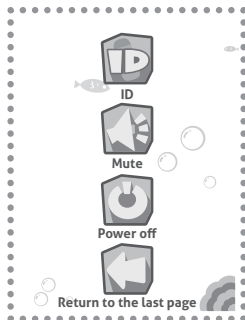
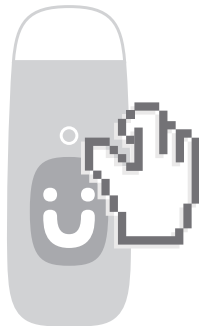


Home page

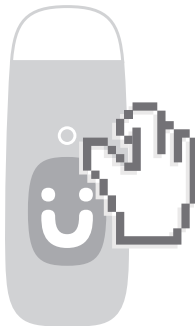


To check the menu: Press the main button until the menu appears. To enter each item in the menu, slide your hand upward or downward against the right or the left side of the bottle (touch area) to scroll through the items, and then press the main button to select your desired item. If you enter the ID page, press the main button again to return to the menu. To exit the menu, select the return button and the last screen you viewed will be shown.

Menu



Standby: Standby mode is a power-saving feature that automatically turns off the screen when motionless for 10 seconds. Press the main button for 3 seconds or touch the bottle in the touch area to light up the screen.



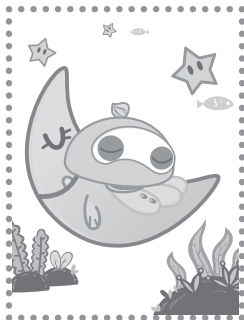
School Mode: When Gululu Interactive Bottle is in school mode, there will be a book icon on the screen and the pets will not respond to any interactions. Set the timetable in the Gululu App.

School Mode



Bedtime: When it is time for bed, the pets will not respond to any interactions.

Bedtime Mode

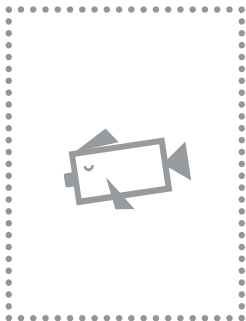


Social Networking: When there are two or more Gululu Interactive Bottles nearby, shake Gululu to find friends! The kids, as well as the pets of both kids, are added as friends with a simple shake. The friend adding function works best when two bottles are within 6 yards of each other.

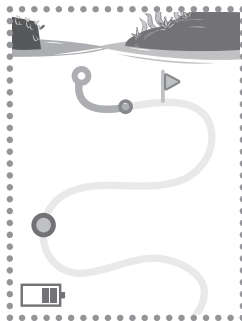


Battery status: When the battery fish (a) appears on the home page, the battery is low. Charge Gululu Interactive Bottle as soon as possible. The battery status is also shown on the map. Press the main button to switch from the home page to the map to check the remaining battery.

Battery fish

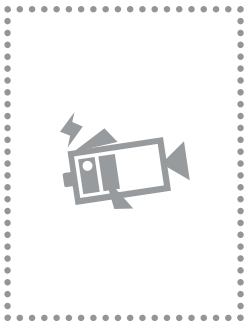


Map

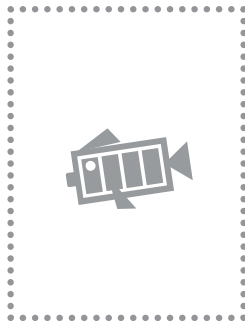


When charging, the charging status appears on the screen.
Recommended charging time is 2 hours.

Charging...



Charging is complete



CLEANING

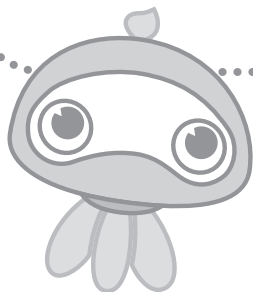
Remove the detachable bottle cap, the inner cap and the spout from the bottle. Rinse all these parts with cold or warm water. You can wash Gululu Interactive Bottle with a soft bottle cleaning brush or a sponge for a deep clean. Do not use hard bristle brushes to clean Gululu Interactive Bottle.

Use soapy water or mild dish detergent if necessary. Do not use cleansers containing bleach, chlorine, or harsh chemicals.

Gululu Interactive Bottle is not dishwasher safe.

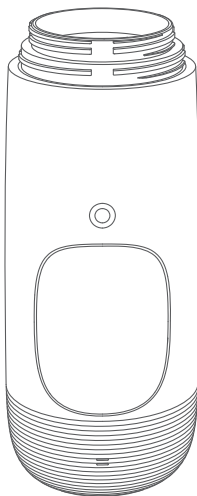
Do not put Gululu Interactive Bottle in the dish dryer.

Do not sterilize Gululu Interactive Bottle in boiling water or by putting it in a steam sterilizer.





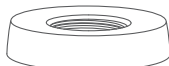
Not dishwasher safe.
Non-microwavable



clockwise



Counterclockwise



clockwise



SAFETY INFORMATION

Recommended for ages 3+.

Make sure to screw the cap and the spout tight on to the bottle before use to avoid any choking hazard.

Gululu can handle water temperatures from 0°C (32°F) to 65°C (149°F). To avoid damaging Gululu, do not put water hotter than 65°C (149°F) into the bottle. We recommend temperature of approximately 35°C (95°F). Please be mindful of the water temperature to avoid burns or scalding.

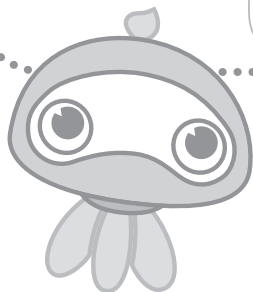
Gululu Interactive Bottle is not microwavable.

Do not put Gululu Interactive Bottle in the freezer.



WARNING:

CHOKING HAZARD - Small parts
Not for children under 3 years.



Do not disassemble the bottle yourself. Disassembling Gululu Interactive Bottle might cause injury and loss of bottle functions.

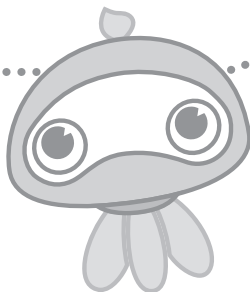
Keep away from fire.

Avoid crash or break.

Dispose of batteries safely.

Periodically examine the battery charger for damage to the USB charging cable, charging dock or other parts that may result in the risk of fire, electric shock or injury. If the USB charging cable or charging dock is damaged, do not use it.

Rechargeable batteries are only to be charged under adult supervision.



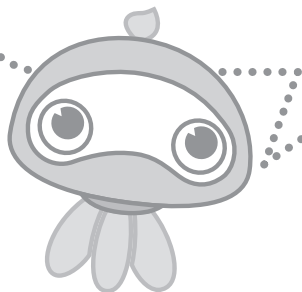
WARRANTY

We offer a one-year return for repair if the product is defective or damaged. Shipping charges or taxes may apply depending on location.

The warranty does not cover any damage resulting from abnormal use, abusive use, incorrect use, negligence, accidents non-observance of guidelines, etc.

To return the product, please provide a copy of the original invoice, bill or receipt along with your full address and contact information.

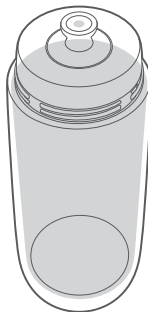
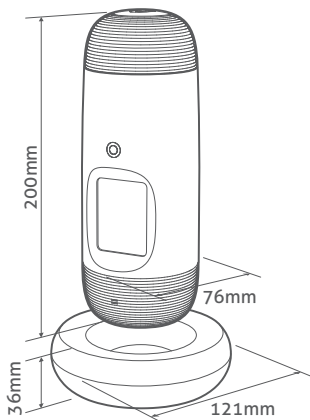
Bowhead Technology reserves the right of refusal, repair, replacement, or refund.



TECH SPECS

Materials: BPA free and comply with FDA (U.S.) standard, excluding the screen lens and the charging dock.

IP 6/7(Ingress Protection): Totally protected against dust. Protected against the effect of immersion between 15cm and 1m.



Weight: 335g / 0.74lb
Volume: 400ml / 13.5oz



Charging Dock—Input: 5V,1A
(Use a power adapter compliant with applicable country regulations and specification.)



Battery—Capacity: 950mAh.
Charge time: 2 hours of charging provides 5 days of ordinary use or 200 hours of standby.

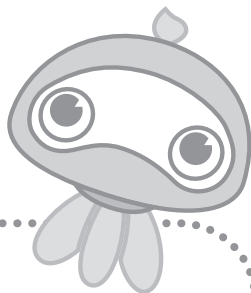


Wi-Fi—Frequency: 2.4 GHz, 802.1 b/g/n

Certification



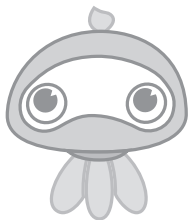
SRRC



For customer service, email to
customer-service@bowhead-tech.com

Customer service: (phone number)

Visit **www.mygululu.com** for more support information, how
to use Gululu Interactive Bottle and Gululu App.



www.mygululu.com

© 2016 Bowhead Technology Inc. All rights reserved.

Apple and Apple logo are trademarks of Apple Inc. registered in the US and other countries. App Store is a service mark of Apple Inc. Android, Google Play and the Google Play logo are trademarks of Google Inc.

Visit www.mygululu.com for more information on how to use Gululu Interactive Bottle and Gululu App.

Printed in China

FCC Warning

This device complies with part 15 of the FCC Rules. Operation is subject to the following two conditions:

(1) This device may not cause harmful interference, and (2) this device must accept any interference received, including interference that may cause undesired operation.

Any Changes or modifications not expressly approved by the party responsible for compliance could void the user's authority to operate the equipment.

Note: This equipment has been tested and found to comply with the limits for a Class B digital device, pursuant to part 15 of the FCC Rules. These limits are designed to provide reasonable protection against harmful interference in a residential installation. This equipment generates uses and can radiate radio frequency energy and, if not installed and used in accordance with the instructions, may cause harmful interference to radio communications. However, there is no guarantee that interference will not occur in a particular installation. If this equipment does cause harmful interference to radio or television reception, which can be determined by turning the equipment off and on, the user is encouraged to try to correct the interference by one or more of the following measures:

- ▶ -Reorient or relocate the receiving antenna.
- ▶ -Increase the separation between the equipment and receiver.
- ▶ -Connect the equipment into an outlet on a circuit different from that to which the receiver is connected.
- ▶ -Consult the dealer or an experienced radio/TV technician for help.

CE Note

Declaration of Conformity

Kang Zhun Electronical Technology (Kunshan) Co., Ltd. hereby declares that this Gululu Interactive Bottle is in compliance with the essential requirements and other relevant provisions of Directive 1999/5/EC. a copy of the original declaration of conformity may be found or obtained at <http://www.mygululu.com>.

