

**CHIC**

# USER MANUAL

**SMART**

Thank you for purchasing CHIC-Smart.

CHIC-Smart is a self-balancing mobility device with two wheels.

Before you started, please make sure to read the User Manual, and follow all safety Precautions.

User Manual can help you better understand, use and maintain CHIC-Smart

For more information or questions regarding CHIC-Smart, please contact  
Hangzhou Chic Intelligent Technology Co., Ltd.



#### **WARNING!**

- It is highly recommended to start your CHIC-Smart always wear the proper safety gear before operating.
- Before you started, please make sure to read the User Manual, and follow all safety Precautions carefully.
- This appliance can be used by children aged from 8 years and above and persons with reduced physical, sensory or mental capabilities or lack of experience and knowledge if they have been given supervision or instruction concerning use of the appliance in a safe way and understand the hazards involved. children shall not play with the appliance. cleaning and user maintenance shall not be made by children without supervision.
- Improper use of this product can lead to property damage, serious bodily injury or death.
- The information in this manual has informed all operating instructions and precautions, users must read it carefully and follow the instructions. Users are responsible for all the consequences that caused by violating warning contents and prompt operations.
- Hangzhou Chic Intelligent Technology Co., Ltd. do not bear legal liability for users improper operate CHIC-Smart in accordance with law.

# Catalogue

1. The document overview .....	3
1.1 About User Manual .....	3
1.2 Driving Risk .....	3
1.3 Preparation before Driving .....	3
1.4 Related Instructions .....	3
2. Product Introduction .....	3
3. CHIC-SMART Operation .....	3
3.1 Turn on CHIC-SMART .....	4
3.2 Remote control of CHIC-SMART .....	5
3.2 Calibration .....	5
3.4 Mat Sensor .....	5
5. Safe-using of CHIC-SMART .....	6
4.1 About safe-using .....	6
4.2 Weight Limit .....	7
4.3 Speed Limit .....	7
4.3 Operating Range .....	7
5. Learn driving .....	7
5.1 Operation Procedure .....	8
5.2 Protection Function .....	8
5.3 Practice Driving .....	8-10
11	11
12	12

6. Safe Driving .....	13-15
7. Usage of Battery .....	16
7.1 Battery Power .....	16
7.2 Charging process .....	17
7.3 Temperature .....	17
7.4 Shipping Notes .....	17
7.5 Description of Battery .....	18
8. CHIC-SMART Bluetooth Function.....	19
8.1 Mobile phone application connect .....	19
8.2 Bluetooth Speaker .....	19
9. Shipping and Maintenance .....	20
9.1 Clean CHIC-SMART .....	20
9.2 Store CHIC-SMART .....	20
10. Handle Fault .....	21
Enjoy your CHIC-SMART .....	



# 1. The document overview

## 1.1 Description

Describe safety and warning information ensure every user can drive CHIC-SMART safely and enjoy CHIC.

- Introduce every part of CHIC-SMART Manual warning and caution help you enjoy it.
- This Manual only for CHIC-SMART.
- Any questions, please contact Hangzhou Chic Intelligent Technology Co., Ltd.

## 1.2 Driving Risk

CHIC-SMART is for personal transporter, Technology and production process have strict test for every CHIC-SMART. Driving don not according Manual, may cause any danger.



Falling, out of control, collision in any place, including fail to obey CHIC-SMART Manual, may cause injury even death. In order to minimize the risk of driving, insure you must read CHIC-SMART Manual.

### 1.3 Preparation before Driving

Before driving, please check level of battery, using details check fifth chapter, Fail to obey CHIC-SMART Manual, may cause injury

## 1.4 Related Instructions

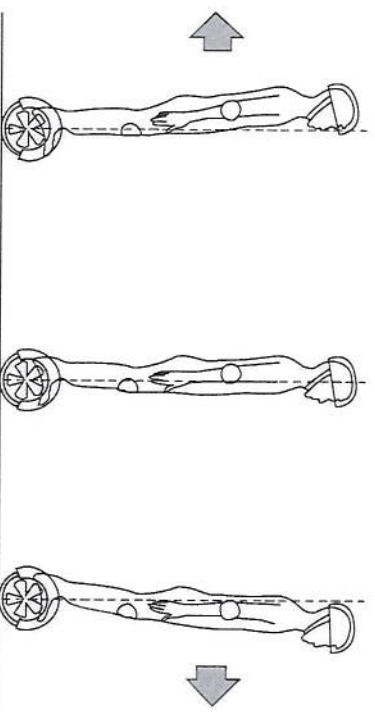
Instruction below adapt to all CHIC-SMART Manual, Please give special attention to related WARNING and NOTE.

	<b>WARNING!</b>	Warning: Any improper action will bring dangers on your personal safety.
	<b>NOTE:</b>	Note: Users should pay attention to the matters and the relevant usage.

## 2. Product Introduction

CHIC-SMART is a high-tech electric car, which based on dynamic balance principle can control forward, backward, and stop. Easy Operation, flexible control low carbon, green environmental protection and suitable for the road are CHIC-SMART's advantages, CHIC-SMART is widely used in leisure walking, scenic tours, security patrol and other fields.

- CHIC-SMART uses gyroscope and acceleration sensor to control balance intelligently depend on center of gravity. CHIC-SMART also use servo-control system to drive motor accurately. It likes a human body, when you stand on the CHIC-SMART, body forward or backward, power plant will control the wheels forward or backward movement to keep balance. When you turn, need to slow down and move body left or right.
- Built-in inertia dynamic stabilization system can keep the direction of front and back, however, it cannot guarantee the stability of left and right. When you drive CHIC-SMART, please shift your weight in order to overcome the centrifugal force and improve the turning of security.



## 3. CHIC-SMART Operation

### 3.1 Turn on CHIC-SMART

Press and hold the power button, battery indicator light up.

CHIC-SMART series including two models. One with remote, the other one without remote.

CHIC-SMART without remote can be turn off by press power button on working state.



Power Button



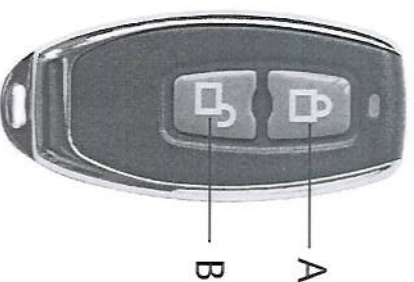
pin Charging Port

### 3.2 Remote control of CHIC-SMART

CHIC-SMART with remote maximum operating range is 15feet(approximately 5 meters)

A. Power OFF (A) Button: When the device is powered on, press and hold button A for 3 seconds to power off.

B. Lock/Unlock (B) Button: While device is powered on, click the B button to lock CHIC-SMART, click B button again to unlock CHIC-SMART. Press and hold B button for 3 seconds while device is powered on, CHIC-SMART will switch to beginner mode reducing top speed and turning sensitivity.



#### NOTE:

The Maximum control distance will gradually decline when the battery power of the remote control drops. No cycling in 10 minutes, CHIC-SMART will turn itself off. Lock status will increase power consumption and not turn off by itself, CHIC suggestions for long time no use, please turn off CHIC-SMART.

### 3.3 Calibration

When CHIC-SMART experience an error, such as mats cannot on level, CHIC-SMART may not go straight or turn by itself. It means it will not operate until it is properly calibrated.

- CHIC-SMART without remote

Put CHIC-SMART mats on level. Press and hold power button for 3seconds. Both display lights flash and beep for 5seconds. Now it has been reset.

- CHIC-SMART with remote

1. Put CHIC-SMART mats on level.

2. Click B button, battery light will display red (locked mode).

3. Then press and hold both A and B simultaneously for 2seconds, both display lights flash and beep for 5seconds.

4. Click B button again to unlock. Now it has been reset.

### 3.4 Mat Sensor

There are four sensors under the mat,when the user steps on CHIC-SMART mats,it will automatically adjust to the balance mode.

- Driving CHIC-SMART,you must ensure that you are stepping on the feet mats,trample floor mat,please don't step part besides of the mats.

- Please do not put items on the mats,which will make CHIC-SMART switch unable to turn off,and increase the probability of collision to cause the injury of people or damage to CHIC-SMART.



## 4. Safe-using of CHIC-SMART

### 4.1 About safe-using

We hope every user can drive CHIC-SMART safely and enjoy the fun. You can recall the memories of learning how to ride a bicycle, drive a car, ski or use other similar means of transportation; all these experiences can be applied to our products.

- Please follow the related content in "User Manual". We strongly recommend that you should read the "User Manual" carefully before riding at the first time. Checking whether tires are damaged, parts are loose before driving. If there is any abnormal situation, please contact local dealer for repair.
- Please carefully read the "Product Manual", which will help you to get a lot of important safety information such as speed limits, vibration alert and safety shutdown, etc.
- Do not make any use of CHIC-SMART to endanger the safety of persons or property.
- Do not modify the parts of CHIC-SMART randomly, it will affect the performance of CHIC-SMART, even cause serious injury.

### 4.2 Weight Limit

- The following two points are the reason of weight limit: 1. Ensure the safety of user 2. Prevent injury due to overload



- Overload will cause injury!

### 4.3 Speed Limit

- When the speed close to the maximum allowable speed, the buzzer alarm will ring.
- CHIC-SMART can keep the user in balance within the specified speed. If the speed exceeds the specified speed; CHIC-SMART will take the initiative to tilt the driver so as to make the speed in a safe range.

## 4.4 Operating Range

There are a lot of factors that will affect drive distance, such as:

- Terrain: A smooth, flat surface will increase the driving distance, on the contrary, it will reduce the distance.
- Weight: The weight of the driver can affect driving distance, a light user will have further range than a heavier user.
- Ambient temperature: Please ride and store device under recommended temperature, which will increase driving distance, on the contrary, it will reduce the distance.
- Maintenance: Reasonable battery charging and maintenance will increase the distance.
- Speed and Driving Style: Maintain a moderate speed will increase distance, frequent start, stop, acceleration and deceleration will reduce the distance.

## 5. Learn driving

It is important to learn and remember the related security matters and notes before driving chic-smart.

### 5.1 Operation Procedure

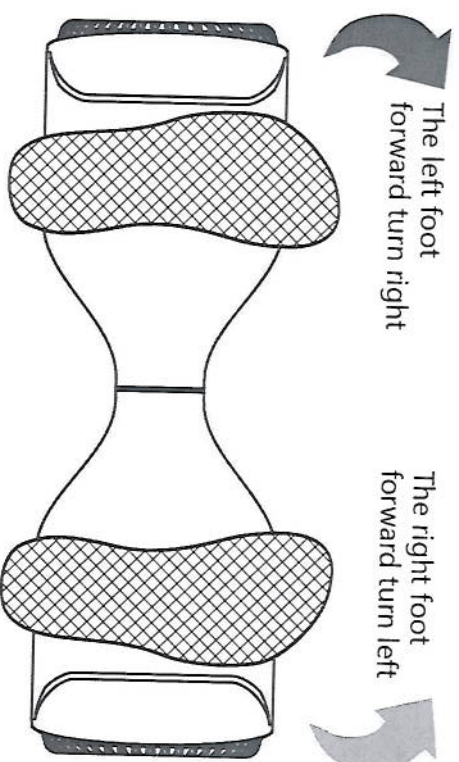
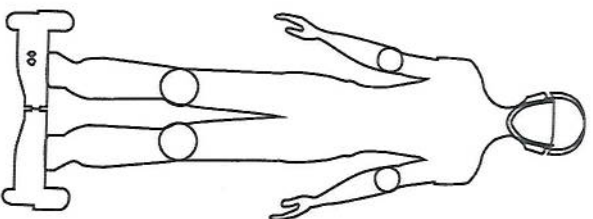
- Step 1: Start CHIC-SMART. Open the charger port of vehicle, press the power button.
- Step 2: Prepare driving. 1, Put CHIC-SMART on the flat ground. 2, Put one foot on pad that will trigger pedal switch to run indicator light, after the system enters the self-balancing, then put the other foot on the pad.
- Step 3 : Control CHIC-SMART . After standing up successfully, keeping the balance of the center of gravity can maintain

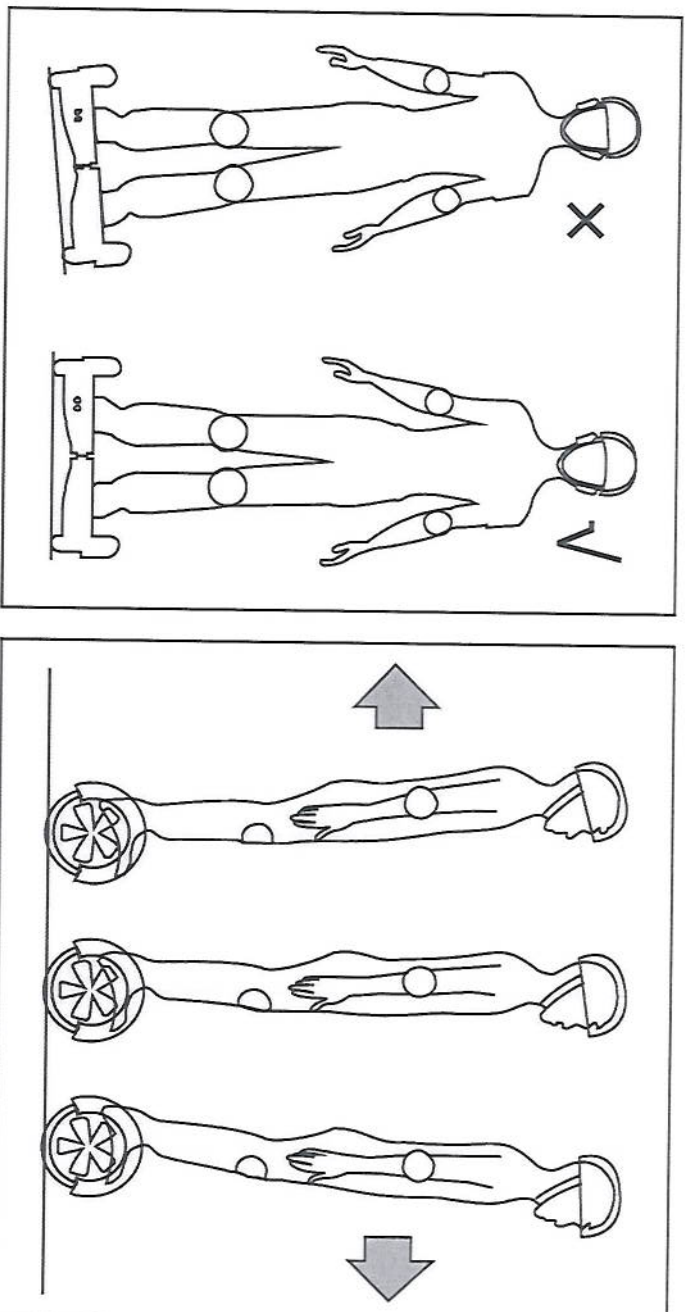
CHIC-SMART stationary state. Small forward or backward through body, remember that do not moves large extent.



If user stands CHIC-SMART, platform is not at the level stat, the buzzer will alarm and warning indicator will light up. At that time the system cannot enter self-balancing status, users are forbidden to operate CHIC-SMART.

- Step 4 : Control turning. Learn your body,CHIC-SMART will turn to the left; rightward, it will turn to the right.
- Step 5 : Get off. Keep CHIC-SMART balance, get one foot down, then the other foot left mat quickly.





Driving Schematic



- Do not turn sharply in the case of high speed to avoid dangerous situations.
- Do not drive and turn round quickly on slopes, it may cause dangerous issues.

## 5.2 Protection Function

During operation, if there is a system error or illegal operations, CHIC-SMART will prompt drivers in different ways.

- When you get on the vehicle, the surface forward or backward more than 10 degrees.
- Battery voltage is too low.
- In charging.
- Riding process, the following is forbidden in uphill.
- Over-speed.
- Battery is shortage.
- Car body rocking back and forth over 30S.
- System enters protection mode, alarm indicator will be lighted up, buzzer will alarm.
- Platform forward or backward mode, alarm indicator will be lighted up, buzzer will alarm.
- Tire blocked, SMART will halt after 2 seconds.
- Battery is insufficient below protection, SMART will engine off after 15 seconds.
- Sustained high discharge current performance (such as long time drive at long steep slope). SMART will engine off after 15 seconds.





When CHIC-SMART engine off, system will halt, press Battery Display to unlock. Do not continue driving CHIC-SMART when the battery is exhausted or the system issues the stop information, it may lead you in trouble. Continue driving under low power will affect battery life.

### 5.3 Practice Driving

Learn how to ride CHIC-SMART in an open field until you can get on, off the vehicle, forward and backward, turn and stop easily.

- Dress in casual clothes and flat shoes.
- You can drive CHIC-SMART in outdoor space until you can easy control. Ger on, forward, backward, turning, get off.
- Drive in flat ground.
- You can drive CHIC-SMART in different terrain, please slow down in an unfamiliar terrain.
- CHIC-SMART is design to be a personal transporter drive in flat ground, if you drive in different terrain, please slow down in an unfamiliar terrain.
- If you are not skilled at driving CHIC-SMART, please avoid driving it in crowded place. When you go through a door, please make sure CHIC-SMART can pass normally.

## 6. Safe Driving

This section provides some safety knowledge and cautionary statements, letting you learn about the safety precautions before using the CHIC-SMART.

To ensure that you can safely drive CHIC-SMART, please be sure to read product manuals and comply with the relevant safety instructions. Please note all the safety warnings and safety cautions that are mentioned in the product manuals, which can make drive CHIC-SMART safer and get more pleasure.



- At any time using the CHIC-SMART, it may cause injury due to loss of control, collision and falling down. To avoid injuring, you must carefully read the user manual and drive the CHIC-SMART referring to the manual description. Please make sure to use products in good condition and carefully read and well-known all users materials provided by our company before using the product.
- When you are driving CHIC-SMART, make sure to take all the safety measures, such as: wear a helmet, knee pads, elbow pads and other protective gear.
- CHIC-SMART is only used for personal entertainment use.
- It is prohibited to use on motorway.
- Do not allow children, the elderly, pregnant women drive it.
- Do not drive after drinking or using drugs.
- Do not carry items when you are driving it.
- When driving CHIC-SMART, please comply with local traffic laws, give way to pedestrians.
- Please be alert to things in front or far away from you, keeping good vision will help you drive CHIC-SMART safer.
- Hands clench the handle, legs relax, knees slightly bent, which would help you keep balance when you encounter uneven ground.

- Make sure the feet are always riding on the pads.
- Please wear suitable sports apparel to drive CHIC-SMART, so that you can deal with emergencies better.
- CHIC-SMART can only be driven by one person, it cannot be driven by two or more people.
- Users and their belongings should not exceed the maximum load , or it would make users more easily to fall or get injured during the course of driving, and even cause CHIC-SMART functional damage. In addition, the driver should not be less than, which will cause driver cannot operate CHIC-SMART, especially on the downhill the driver can't reduce or stop safely.
- Ensure the speed within a safety range.
- If accident happens, please stay in place and wait for relevant departments to deal with events.
- When you drive CHIC-SMART along with other users, please keep a certain distance between each other to avoid a collision.
- You should always keep in mind your height has increased 10 centimeters, be carefully when you pass doors.
- When turning, please keep balance.
- Do not distract when driving CHIC-SMART, such as answer the phone, listen to music, or engage in any other activities.
- Do not allow to drive on slippery road in rainy day, reverse turning with a high-speed and long range high-speed.
- The personal transport is not in order to design, test, or relevant proof way to become medical equipment. Therefore, the user must use it without external force to help CHIC-SMART.
- Do not drive in a dark place.
- Avoid driving in impediment and smooth surface, such as: snow, ice, and slippery floor.
- Do not drive in road with obstacles, such as twigs, litter or small stones, etc.
- Avoid driving in narrow space.
- Avoid driving on a steep slope.
- Avoid driving unsafe place, including Inflammable gas, steam, liquid, dust, fiber which could cause fire and explosion accidents.

- This device complies with Part 15 of the FCC Rules. Operation is subject to the following two conditions:
  - (1) This device may not cause harmful interference, and
  - (2) This device must accept any interference received, including interference that may cause undesired operation.
- Please take attention that changes or modification not expressly approved by the party responsible for compliance could void the user's authority to operate the equipment.
- Note: This product has been tested and found to comply with the limits for a Class B digital device, pursuant to Part 15 of the FCC Rules. These limits are designed to provide reasonable protection against harmful interference in a residential installation. This product generates, uses, and can radiate radio frequency energy and, if not installed and used in accordance with the instructions, may cause harmful interference to radio communications. However, there is no guarantee that interference will not occur in a particular installation. If this product does cause harmful interference to radio or television reception, which can be determined by turning the equipment off and on, the user is encouraged to try to correct the interference by one or more of the following measures:
  - Reorient or relocate the receiving antenna.
  - Increase the separation between the equipment and receiver.
  - Connect the equipment into an outlet on a circuit different from that to which the receiver is connected.
  - Consult the dealer or an experienced radio/TV technician for help.

FCC ID: 2AHNZCHIC

## 7. Usage of Battery

This section mainly describe the charging method of CHIC-SMART, how to maintain the battery, some security issues, and battery specifications. For users' safety and the maximum extent of prolonging the battery life and improve battery performance, please follow the following operations using the battery.

### 7.1 Battery Power

You must stop driving if CHIC-SMART displays low power, or it may affect lifetime and cause dangerous problems.

Don't use the battery if the following occurs.

- Emit odor or overheat.
- Don't touch any leaking materials.
- Children and animals are forbidden to touch battery.
- The charger must be taken out before installing or driving or it may cause danger.
- Battery contains dangerous substances, do not open the battery, do not insert anything into the battery.
- Please use the charger provided by CHIC.
- Don't charge the battery that has over discharged. It should be abandoned for safety.
- CHIC-SMART battery should be used obey local law.



## 7.2 Charging process

- Ensure charging port is dry.
  - Open the charging port.
  - Plug the charging cable into the CHIC-SMART, make sure green indicate light up, then connect the cable with the power supply (100V ~ 240V; 50, 60 Hz).
  - The red light indicates that it begins to charge, otherwise check whether the cable is connected.
  - When the indicator light from red to green, it indicates that power is fully charged.
- At this time, please stop charging, over-charging will affect lifetime.



Charging port



Forbidden to use the charger for charging without the manufacturer's approval, otherwise the device will be damaged.

## 7.3 Temperature

The best charge temperature is 0°C~40°C. Over cold and over heat will not completely full of battery.

## 7.4 Shipping Notes



Please contact CHIC or our authorized agent, and then CHIC-SMART can be send to you according to your requirement.



Lithium battery is dangerous articles. Shipping lithium should be allowed by local law.

#### 7.5 Description of Battery

Contents	Parameters
Battery	Lithium Battery
Charging time	2-3 h
Voltage	36 V
Initial Capacity	1-4 Ah
Working Temperature	-10°C~50°C
Charging Temperature	0°C~40°C
Storage Time(-20°C-25°C)	12 months
Storage Humidity	5 %-95 %

## 9. Shipping and Maintenance

CHIC-SMART requires the user to do routine maintenance.

This chapter describes maintenance steps and important operating tips.

Before you perform the following operations, ensure the power and charging cable is disconnected. If the power or the battery is charging, the operation is not allowed.

### 9.1 Clean CHIC-SMART

- Disconnect the charger and turn off CHIC-SMART.
- Wipe the cover.



**WARNING!**

- Avoid using water or other liquids on the CHIC-SMART for cleaning. The IP is X4. If water or other liquids seep into the car, it will cause permanent damage to the internal electronics.

### 9.2 Store CHIC-SMART

- Fully charge your battery before storing.
- If you store CHIC-SMART more than one month, please remove the battery and charge it at least every three months.
- If the storage ambient temperature is below 0 °C, please do not charge. You can bring the vehicle into a warm environment (above 10 °C) for charging.
- To prevent dust coming, you can cover CHIC-SMART.
- Store CHIC-SMART indoors, a dry and suitable temperature. If you do not use it for a long time, please do not connect the power.



**WARNING!**

- Users who disassemble CHIC-SMART without permission will regard as giving up the right of warranty.

## 10. Handle Fault

CHIC-SMART some trouble may caused by gyroscope, quiescent current, dynamic current.

If CHIC-SMART have some trouble, please dealing with it as follow:

Trouble Shooting Guide

No.	Symptom	Solution
1	chic-smart mats tilt up, alarm and red LED lights up	1. Over speed    2. Low battery
2	Chic-smart mats unbalanced	Please calibration according to 3.3
3	Chic-smart cannot go directly or turn by itself	
4	Remote not work or control distance shorter	Remote low battery, please replace the battery.
5	Lose of remote	Please use new remote and reset the chic-smart with remote
6	Hub wheel gets stuck	Please check whether the card into the foreign body between motor and the shell
7	Unable to charge	Make sure the charger connection is corrected. ( Please connect charging port to charger in right position, be care for concave - convex structure. The location should not be misplaced, the main board will be broken if dislocation charger;Please check whether it can be work the charger and battery or not. (Can use the Multimeter to test)
8	Unable to turn on	Please charge for 10-15min, check chic smart whether low battery or not.

## 8. CHIC-SMART Bluetooth Function

New functions can be chosen by users at will.

### 8.1 Mobile phone application connect

- The mobile client is another control platform of the CHIC scooters in the smart phone,it can implement more advanced functions.
- Mobile client If IOS APP can be downloaded from Apple App Store,and The Andriod APK version can be downloaded from our company' s official website.
- Connection method:to open the phone Bluetooth(Bluetooth 4+),search the Bluetooth device,and addthe CHIC scooter,then enter the password of login(the initial password is 000000)
- It can achieve the following functions,such as power-on/off,flock/unlock,mode switching,balance calibration,and more features are under constant upgrading.
- Status display:Instant running speed,remaining energy,working mode,total mileage,and single mileage.

### 8.2 Bluetooth Speaker

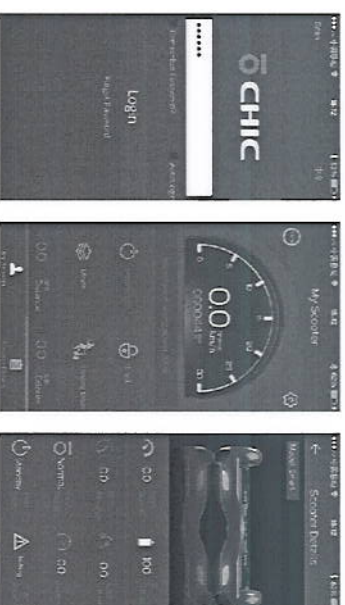
Mobile phone connect CHIC-SMART with Bluetooth, music can be play through Bluetooth speaker in the CHIC-SMART.

Connection Step:(same way as connect with Bluetooth earphone)

1. Turn on CHIC-SMART
2. Open Bluetooth in mobile phone, connect with CHIC-SMART
3. Open the music player in mobile phone, then play the music.



NOTE: Mobile phone application and Bluetooth speaker cannot be connected at the same time in one mobile.

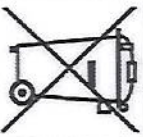




## Enjoy your CHIC-SMART

**Address:** Hangzhou, China.

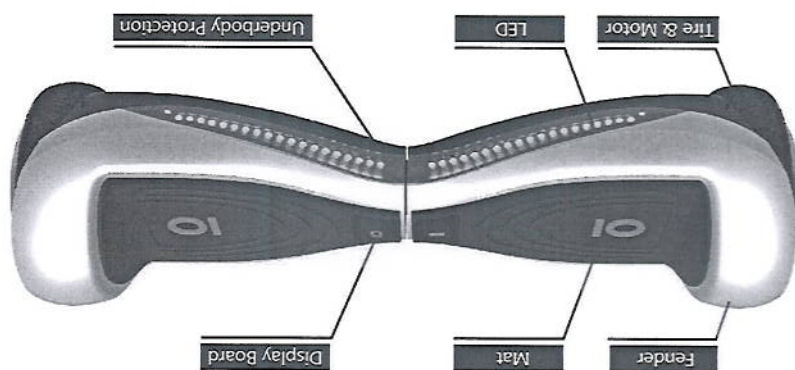
**Website:** [www.chic-robot.com](http://www.chic-robot.com)

Correct Disposal of this product	
	<p>This marking indicates that this product should not be disposed with other household wastes throughout the EU. To prevent possible harm to the environment or human health from uncontrolled waste disposal, recycle it responsibly to promote the sustainable reuse of material resources. To return your used device, please use the return and collection systems or contact the retailer where the product was purchased. They can take this product for environmental safe recycling.</p>

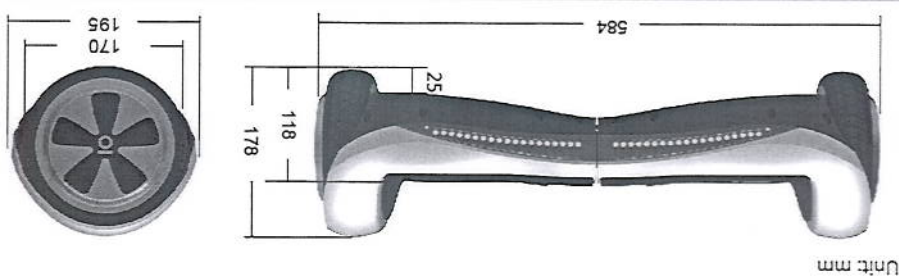
Chic, Move on follow your heart

Hangzhou Chic Intelligent Technology Co., Ltd.  
[www.chic-robot.com](http://www.chic-robot.com)

# 1. CHIC-SMART S3 Components



# 2. CHIC-SMART S3 Dimension



# 3. CHIC-SMART S3 Indicator

Indicators are located in the center of S3 indicate the working state.

A. Battery Indicator: The Green LED light indicates the S3 is charged more than 50%, Yellow LED light indicates the power is less than 50%, Red LED indicates the power is down to 20%, then please recharge the device.

B. Running Indicator: When the operator triggers the rubber foot mats, the Running Indicator LED will light up, which means that the system enters the running state, when the system have an error during operation, running LED light will turn to red and alert with a beep.



#### 4. CHIC-SMART S3 Specifications

Description	Specification	Remark
N.W.	10.5 kg	
Load	20 - 100 kg	Include driver and belongings
Max speed	12 km/h	
Range	10-20km	Terrain, the way of driving and payload may effect range
Max climbing limit	15°	
Min turning radius	0	
Battery	Lithium-ion	
Power requirement	AC100-240V/50-60HZ	Applied to Global
Dimensions	584 x 195 x 178 mm	
Ground clearance	25 mm	
Platform height	118 mm	
Tire	non-pneumatic hollow tire	

#### 5. Packing List

Number	Product Name	Quantity
1	CHIC SMART	1
2	Charger	1
3	Remote	2
4	Manual	1
5	Warranty Card	1
6	Certificate of Approval	1