

FCC ID: 2AHN8-BG7F

#### FCC/IC Statement

This device complies with Part 15 of the FCC Rules. Operation is subject to the following two conditions: (1) this device may not cause harmful interference, and (2) this device must accept any interference received, including interference that may cause undesired operation

Cet appareil est conforme à la partie 15 des règles de la FCC. Le fonctionnement est soumis aux deux conditions suivantes: (1) ce dispositif ne peut pas causer d'interférences nuisibles, et (2) cet appareil doit accepter toute interférence reçue, y compris les interférences qui peuvent causer un mauvais fonctionnement.

#### FCC § 15.21

Changes or modifications made to this equipment not expressly approved by BlackBox Biometrics Inc. could void the user's authority to operate the equipment

#### FCC § 15.105

Note: This equipment has been tested and found to comply with the limits for a Class A digital device, pursuant to part 15 of the FCC Rules. These limits are designed to provide reasonable protection against harmful interference when the equipment is operated in a commercial environment. This equipment generates, uses, and can radiate radio frequency energy and, if not installed and used in accordance with the instruction manual, may cause harmful interference to radio communications. Operation of this equipment in a residential area is likely to cause harmful interference in which case the user will be required to correct the interference at his own expense

#### WARNING!

FCC and IC Radiation Exposure Statement:

This portable equipment with its antenna complies with FCC's and IC's RF radiation exposure limits set forth for an uncontrolled environment. To maintain compliance, follow the instructions below:

This transmitter must not be co-located or operating in conjunction with any other antenna or transmitter. Avoid direct contact to the antenna, or keep contact to a minimum while using this equipment.

Cet équipement portable avec son antenne est conforme aux limites d'exposition aux rayonnements RF de la FCC et IC de définies pour un environnement non contrôlé. Pour maintenir la conformité, suivez les instructions ci-dessous: Cet émetteur ne doit pas être situé ou opérant en conjonction avec une autre antenne ou émetteur. Éviter tout contact direct à l'antenne, ou garder le contact à un minimum tout en utilisant cet équipement.

#### Radio Standards Procedure:

This device complies with Industry Canada's license-exempt RSSs. Operation is subject to the following two conditions:

This device may not cause interference; and

This device must accept any interference, including interference that may cause undesired operation of the device.

Cet appareil est conforme aux CNR exempts de licence d'Industrie Canada. Le fonctionnement est soumis aux deux conditions suivantes:

Ce dispositif ne peut causer des interférences; et

Cet appareil doit accepter toute interférence, y compris les interférences qui peuvent causer un mauvais fonctionnement de l'appareil.

#### Declaration of Conformity:

BlackBox Biometrics, Inc. of 3559 Winton Place, Ste. 2, Rochester, NY declares under our sole responsibility the Wireless Blast Gauge® System 7 0a & 7 1a are in conformity with the following standards:

Low Voltage Directive – 2014/35/EU

EMC Directive – 2014/30/EU

RoHS (Restriction of Hazardous Substances) Directive – 2011/65/EU

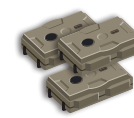
R&TTE Directive – 1999/5/EC

which is indicated and affirmed by the applied CE marking

# The Blast Gauge® System: Gen 7 Flex™

## Quick Start Setup Guide

### What's in the kit?



**Blast Gauges**  
Head – 1 ea  
Shoulder – 1 ea  
Chest – 1 ea



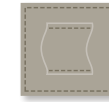
**Rail Adapter**  
1 ea



**Shoulder Strap Extender**  
1 ea



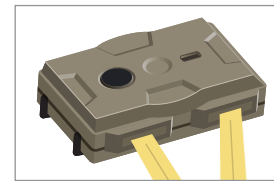
**Bungee System**  
160 mm  
1 ea



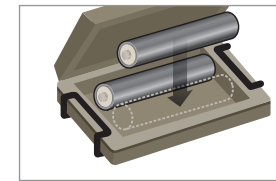
**Mounting Patch**  
2 x 2 in – 1 ea

**Also included:**  
x6 Rechargeable AAA Batteries – 6 ea  
x6 Lithium AAA Batteries – 6 ea

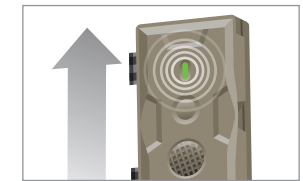
### Product Preparation



1. Using two fingers, gently lift tabs to open gauge

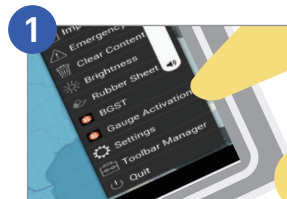


2. Install 2 AAA batteries  
**Note:** Avoid installing batteries in wet or dusty environments.



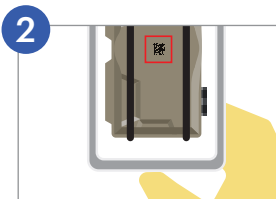
3. Attach gauges as instructed  
**Note:** Gauges should be oriented with the LED up and users should ensure the wire mesh is not covered.

### Software Activation



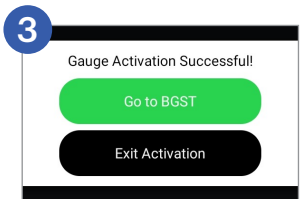
#### Software/ID Setup

1. Open ATAK App
2. Tap the ATAK Menu in upper right corner
3. Tap "Gauge Activation"
4. Tap "Scan QR"



#### Scan QR Codes

1. Align QR code in red square until mobile device vibrates
2. Tap "Next Gauge"
3. Repeat with other gauges
4. Tap "Review Gauges"
5. Tap "Complete Activation"



#### Gauge Activation

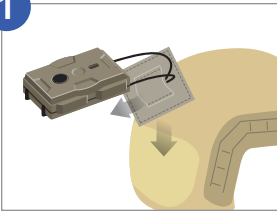
1. Activated gauges will show green LED
2. Tap "Go to BGST" to open the plugin
3. Optional: Tap "BGST" in the menu to open plugin



Not an approved medical device. AirBoss Defense Group continuous development may cause the information and specifications contained herein to change without notice. ADG reserves the right to change, modify, or discontinue any products. Image may be slightly different than actual products.

## Attachment

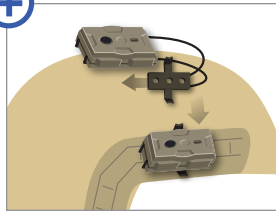
1



### Head (patch)

1. Loop BGS bungee through fabric loop of velcro patch
2. Affix patch to velcro on helmet shell

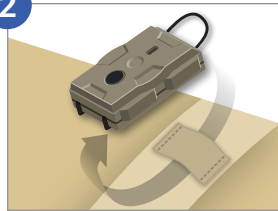
+



### Head (rail)

1. Using BGS bungee, attach BGS to rail mount adapter
2. Affix BGS with adapter to helmet rail

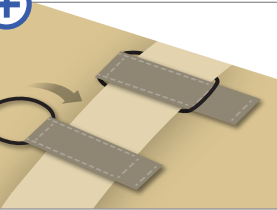
2



### Shoulder

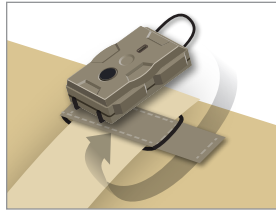
1. Using BGS bungee, attach BGS to PALS webbing on non-firing shoulder

+



### Shoulder (alt.)

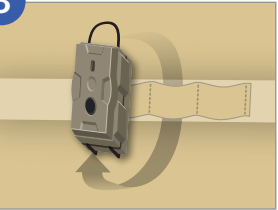
1. Hold extender on top of shoulder strap
2. Pull extender bungee behind shoulder strap and loop over opposite end of extender



### Shoulder (alt.)

3. Using BGS bungee, attach BGS to PALS webbing on extender

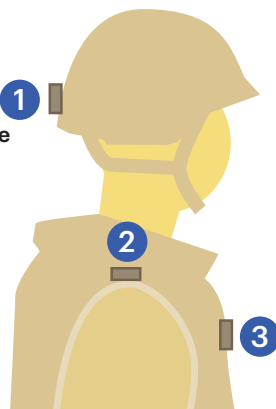
3



### Chest

1. Using BGS bungee, attach BGS to PALS webbing on vest

Place as close to back of the head as possible

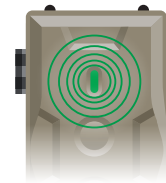
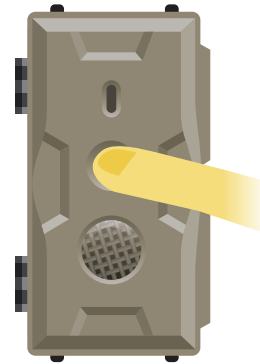


## Attachment Positioning

- 1 Back of head
- 2 Non-firing shoulder
- 3 Chest

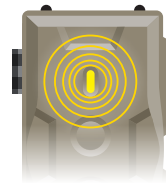
## Manual Reading (LED Indicator)

Press and hold the center button for 3 seconds to retrieve reading and activate LED.



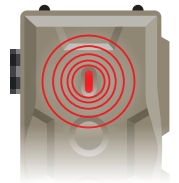
### GREEN

Overpressure exposure within the guideline for a single exposure



### YELLOW

Caution: Exposure guideline exceeded

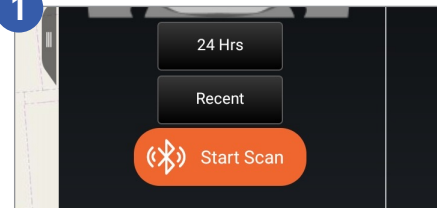


### RED

Alert: Severe exposure  
**Check Personnel**

## Software Scanning

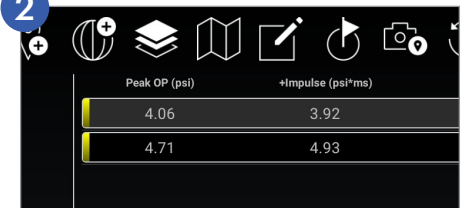
1



### Show Blast Events

1. Filter events by time frame
2. Gauges are in ultra-low Bluetooth mode (Interrogated Wireless™)
3. Tap "Start Scan" only if safe to emit Bluetooth noise

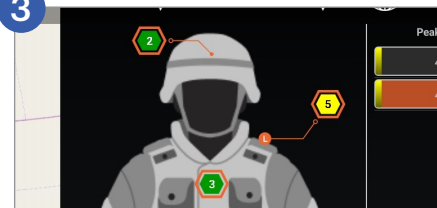
2



### Blast Events

1. If blast events have occurred in your selected time frame, they will begin to appear on the list

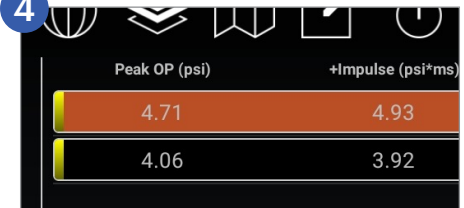
3



### Body Loading

1. Tap an event to see rounded readings from each gauge location on the diagram. Use this to conceptualize how the blast interacted with your body

4



### Sorting

1. Events automatically sort with the most recent events first
2. Tap "Time" and select "Peak" to sort with the highest Peak OP events first