

# BW8800 Users Manual

## 1. Introduction

BW8800 is a wireless module, It support usb2.0 interface, and it is compatible with 802.11 a/b/g/n/ac and BT4.0 spec.

Generic,the wireless module is build in complete machine, it will not be used on PC.

### 1.1 Work Mode

BW8800 support following work mode:

- ◆ WLAN Client
- ◆ Wifi Direct / P2P features
- ◆ Bluetooth

### 1.2 Supported System

BW8800 support linux system up to now,we can provide linux driver and test tools.

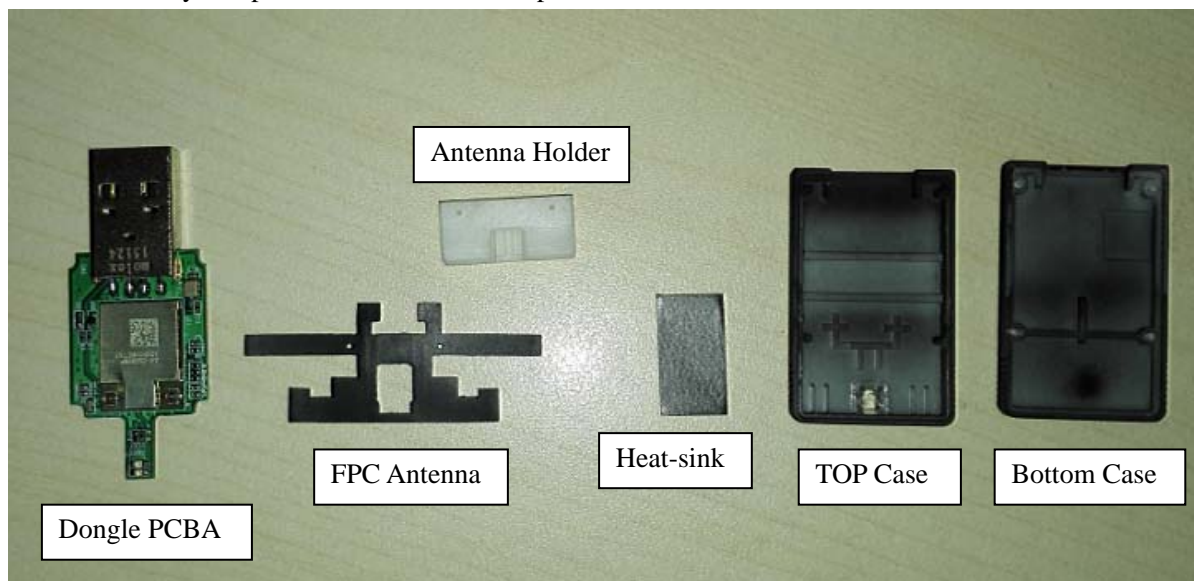
### 1.3 Supported interface

It support usb2.0,you can connect it to host with usb interface.

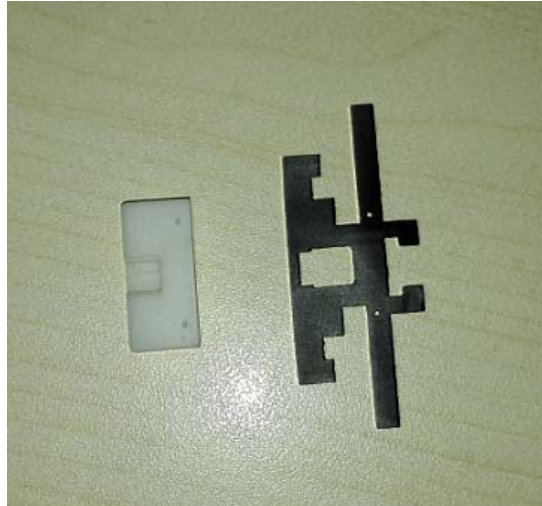
## 2. SOP

The BW8800 assembly is shown in the following steps:

All the assembly components are shown in the picture at below:



**Step 1:** Paste FPC antenena to antenna holder to construt the antenta pattern as the picture showsns at below:

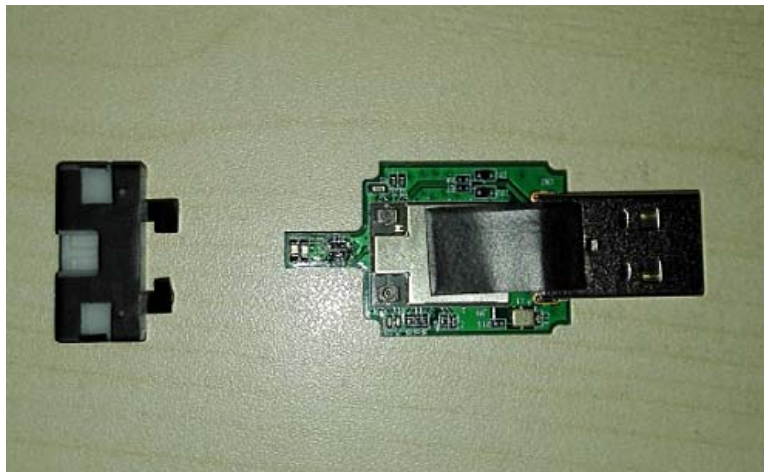


**Step 2:** Paste the heat-sink from Azurewave module to USB connector as picture shown:





**Step 3:** assembly the antenna pannen and the dongle module as the following pictures:



**Step 4:** install the top and bottom case of dongle

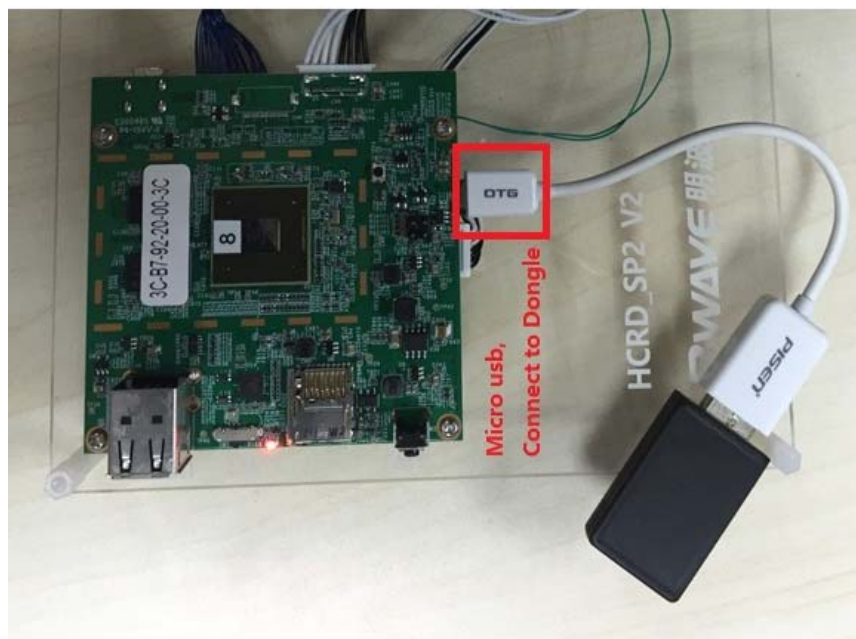






**Step 5:** Connect to your host main board with usb interface and the main board was setup in the HITACHI smart projector. BW8800 can not work alone ,it must be working with main board .

Such as:



### 3. Application

BW8800 is now used to HITACHI smart projector.

#### 4.1 The smart projector outside view

The new smart projector is developing,Its first outside view as below:



## 4.2 The smart projector supported features

It may support following features:

- ✚ connect with AP or other smart device by wifi
- ✚ connect with smart phone or other smart device by BT
- ✚ support storage
- ✚ support multi-screen
- ✚ It can be controlled with smart phone
- ✚ Miracast
- ✚ Support Internet

## 4.3 wifi connect

When BW8800 is work in P2P model in the smart projector, your phone can scan and connect to it.

Then you can control the smart projector with your phone, or up or download file to/from the projector.

When BW8800 is work in STA model in the smart projector, it can be connected to AP. Then it can access Internet.

## 4.4 BT connect

Open the BW8800 BT and your phone BT function, scan BW8800 and pair with your smart phone, and connect your phone to BW8800

Then you can control the smart projector with your phone, or up or download file to/from the projector

## 5. Warning

- Please keep far away from water
- Please use the rated power
- Please keep ventilation

**FCC Radiation Exposure Statement:**

This equipment complies with FCC radiation exposure limits set forth for an uncontrolled environment. This equipment should be installed and operated with minimum distance 20cm between the radiator& your body.

This transmitter must not be co-located or operating in conjunction with any other antenna or transmitter.

This device complies with part 15 of the FCC Rules. Operation is subject to the following two conditions:

- (1) This device may not cause harmful interference, and
- (2) this device must accept any interference received, including interference that may cause undesired operation.

Changes or modifications not expressly approved by the party responsible for compliance could void the user's authority to operate the equipment.