

---

motion camera user manual

FCC ID: 2AHHX-A11

---

## 目录 -- Directory

directory--目录

- 1 .motion camera appearance and Key Description--运动相机外观和按键说明 3
2. Motion camera memory card--运动相机存储卡 4
- 3.WLAN--无线局域网 5
- 4.BT-蓝牙 7
- 5.E-mall--电子邮件 9
- 6.Dial--拨号 10
- 7.message--信息 14
- 8.catalog--目录 16
- 9.Browser--浏览器 19
- 10.recorder--录音机 21
- 11.Clock--时钟 22
- 12.Documents Management--文件管理 23
- 13.Camera--相机 24
- 13.1.Camera--相机 24
- 13.2.vidicon--摄像机 20
- 14.picture--图库 27
- 15.music--音乐 30
- 16.motion camera--运动相机 33
- 17.settings--设置
- 18.the operation notices of motion camera--运动相机使用注意事项 37

## 1 .运动相机外观和按键说明      Description of motion camera appearance and Keys

按键 --Keypad	功能--function
拍照键 --Camera Key	在拍照界面按下此按钮拍照，在其他界面长按此按钮快捷进入相机。 under camera interface, press this key you can take a picture under other interface, long-time press this key will enter into camera interface
菜单 --Menu	按下此键可开启动作清单，让您在目前的界面或选项菜单中执行动作。 Press this key ,the action lists will pop-up, you can select and execute any action in this list.
返回 --Back	按下此键可返回前一个界面，或是关闭对话框、选项菜单、通知面板或屏幕键盘。 Press this key to return to the pre-interface ,or close the present dialog , the menu,the notice or the soft keyboard.
电源 --Power	在关机状态按住此键4秒以上开启运动相机；休眠状态轻按此键唤醒运动相机，开机状态轻按此键运动相机熄屏休眠；开机状态按住此键开启运动相机的选项菜单，可以选择飞行模式、关闭运动相机，或将运动相机设成静音模式、振动模式。 Press this key for 4s to turn on camera under shut down status; Press this key to wake-up camera under stand by status; Press this key to enter into stand by status under power-on status; under power-on status, press this key can open the selection menu, user can select flight mode, shut down camera or set silent mode or vibration mode.
音量键 “+” volume keys “+”	按此键可以增大音量。 Press this key to upper volume
音量键“-” volume keys “-”	按此键可以减小音量。 Press this key to lower volume
镜头选择 键 Lens selection key	按住次按钮可以更换不同配置的镜头 Press this key to change different lens

若要从计算机传送音乐、相片和其它档案到您的储存卡，您必须先将运动相机储存卡设成U盘。

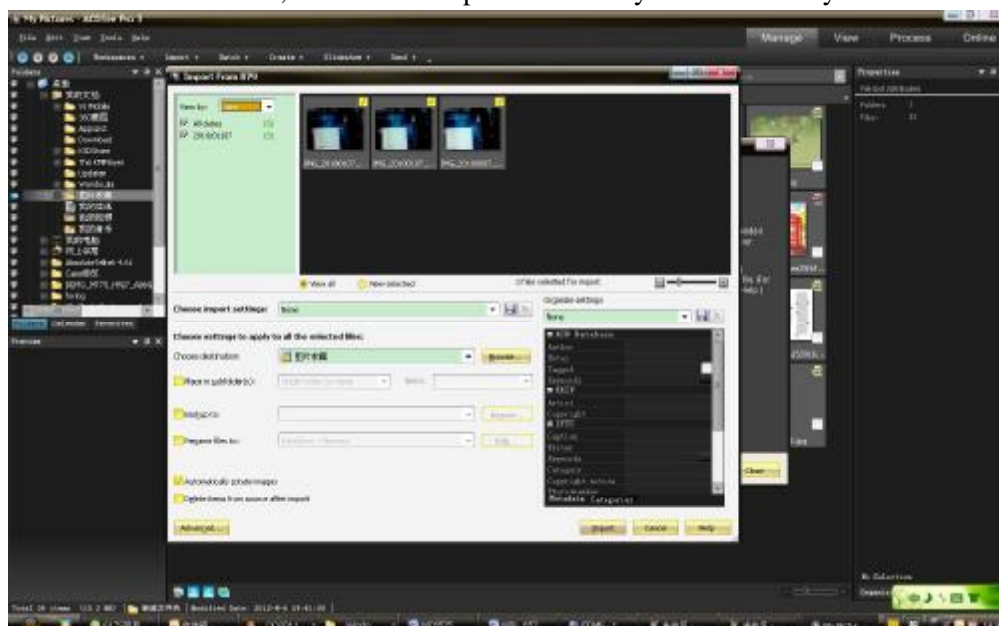
将运动相机储存卡设成U盘 set memory card to U-disk:

Select 'USB already connected ' to load U-disk, then you can download music, photos and other documents from computer to your memory card

Select 'USB as storage device', then you can open the selection on right



After create connection, user can view photos taken by camera directly in PC



### 3.WLAN

WLAN提供最远150英尺(50M)的无线网络接入范围。若要使用运动相机上的WLAN，您必须连接到无线接入点或「热点」。

WLAN can provide no more than 150 inch(50M) wireless network. If you want use the WLAN in camera ,you need connect to access point

注意：WLAN信号的可用性与涵盖范围需视数量、基础结构，以及其它信号穿透的对象而定。

开启WLAN并连接到无线网络

- note: the WLAN signal is decided by the number of need, the basic structure, and the other item which signal to penetrate.

按下首页>菜单，然后触碰设置

Press front page>manual and touch the setting

在无线和网络下。点击WLAN开关按钮，以开启WLAN。运动相机会自动扫描可用无线网络。

Click the WLAN switch button to open the WLAN. Motion camera will automatically scan available wireless network.

触碰WLAN，进入WLAN设置。接着WLAN网络列表会显示查找到的WLAN网络的网络名称和安全性设置(开放网络或以WEP、WPA/WPA2加密)。默认启用WLAN高级设置中的网络通知，运动相机会在查找到有可用的开放无线网络时在状态栏显示图标。


Press Wlan, entering the WLAN settings. Then the WLAN network list will show the network name and security settings for the WLAN network (open network or WPA/WPA2, WEP encryption). The default WLAN advanced settings in the network notification, the camera will be in search of the available open wireless network in the status bar display icon.


触碰其中一个WLAN网络，以进行连接。当您选取开放网络时，运动相机会自动连接到该网络。如果选取的是WEP、WPA/WPA2加密网络，则必须先输入相应的密码，然后再触碰连接。

Selecting one of the WLAN networks to make a connection. When you select an open network, the camera will automatically connect to the network. If you choose the WEP, WPA/WPA2 encryption network, you must first enter the appropriate password, then touch the connection.



---

注意：当运动相机连接到无线网络后，状态栏会显示WLAN图标（），并显示大致的信号强度(亮起的条状数量)。如果触碰运动相机目前所连接的无线网络，则会显示WLAN网络的名称、状态、速度、信号强度、安全性信息和IP地址。如果您想移除运动相机上的无线网路设置，请触碰此窗口上的“不保存”。如果您想连接到此网络，就必须重新输入这些设置。

- note: when the camera is connected to a wireless network, the status bar will be displayed.WLAN Icon () , And display the intensity of the signal (light up Strip number). If you touch a camera at the current connection Network, it will show the name of the WLAN network, state, speed Degree, signal strength, security information and IP address. If you want to remove the wireless network settings on the camera, please Touch this window, do not save". If you want to connect to This network must be reentered in these settings.

注意：

除非您选择不保存网络，否则下次运动相机要连接到先前曾连接过的加密无线网络时，就不需要再重新输入相应密码。WI-FI网络会自行搜寻，也就是运动相机不需执行额外的步骤就可连接到WI-FI网络。

NOTE:

Unless you choose not to save the network, the next time the camera is connected to a previously connected encrypted wireless network, you do not need to input the password again. WI-FI network will search for themselves, it means the motion camera does not need to perform additional steps to connect to the WI-FI network.

连接到其它的WLAN网络Connect to other WLAN networks

在无线和网络画面上，触碰WLAN设置。查找到的WLAN网络会显示在WLAN网络列表中。

touching WLAN settings on in the wireless and network screen,. Other WLAN network will be displayed in the WLAN network list.

触碰其它的 WLAN网络，即可连接到该网络。

touching the other WLAN network, you can connect to the network.

注意：此外，运动相机还可以通过移动网络上网。我们目前默认开机后SIM卡的移动网络为开，用户可手动选择，具体位置在“设置>SIM卡管理>数据连接”，触碰“数据连接”则关闭当前SIM卡数据连接。

note: in addition, the camera can also be online through mobile network. The SIM card's mobile network is on, Users can manually select, Specific location in the >SIM card management >, GPRS connection, touching the data connection to close SIM card data connection.

#### 4. 蓝牙--BT

开启蓝牙或设置运动相机为可检测Put on the Bluetooth or set the camera for detection

按下首页>菜单，然后触碰设置。press the home menu, then touch the settings.

在无线和网络下，点击蓝牙开关按钮，以开启蓝牙功能。开启后，状态栏会出现蓝牙(📶)图示。运动相机会自动扫描蓝牙设备。

in the wireless and network, click the Bluetooth switch button to open the Bluetooth function. After the opening, the status bar will appear blue (📶) icon. Camera will automatically scan the Bluetooth device.

触碰蓝牙，进入蓝牙设置，所有查找到的设备将显示在蓝牙设备列表下方。

touch the Bluetooth, enter the Bluetooth settings, all the devices found will be displayed in the list of Bluetooth devices.

(点击本机蓝牙设备名，可将运动相机设成可检测，这样范围内的其它蓝牙设备就能查找到运动相机。)

click on the Bluetooth device name, can be set into motion camera can be detected, so that other Bluetooth devices can be found in the range of motion camera.

注意：运动相机的可检测时间最长为两分钟。设备下以倒计时方式显示，时间结束，又恢复为默认的不可检测状态。

Note: the detection time of the moving camera is two minutes. After 2 mins later, the camera will become undetective again

配对及连接蓝牙耳机

Match and connect bluetooth

1)按下首页>菜单，然后触碰设置。press the home menu, and then touch the settings.

2)触碰无线和网络>蓝牙，开启蓝牙功能。接着您的运动相机会开始扫描范围内的蓝牙设备，并将所有查找到的设备显示在蓝牙设备列表下方。

pressing the wireless and network > Bluetooth, turn on the Bluetooth function. Then your camera will begin to scan the range of Bluetooth devices, and will all find the device shown below the Bluetooth device list.

提示：Note:

如果列表中找不到您的设备，请触碰搜索设备，再重新扫描一次。

if you can't find your device in the list, please touch search device, then scan again.

请确定您想要配对的蓝牙设备是设为可检测模式。

Please make sure the Bluetooth device you wanna match can be detected

触碰设备列表中的耳机，以进行配对。

press the bluetooth device in the list to match

注意：一般蓝牙设备需输入密码才能进行配对。多以「0000」作为默认密码。配对和连接状态会显示在蓝牙设备列表中耳机的下方。当蓝牙耳机连接到运动相机时，状态栏就会显示蓝牙已连接图示(📶)。这时您可以开始使用耳机拨打或接听电话。



note: most of Bluetooth device need password to match. "0000" is the default password. Matching and connection status will be shown below the list of Bluetooth devices. When the Bluetooth headset is connected to the camera, the status bar will display the Bluetooth connection icon (📶). At this time you can start using the headset to make or receive calls.

中断与蓝牙耳机的连接 Stop the connection with a Bluetooth headset

1) 按下首页>菜单>设置>无线和网络>蓝牙设置。

Press home > Menu > Settings > wireless and network > Bluetooth settings.

2) 在蓝牙设备列表中，触碰已连接的蓝牙耳机。

In the Bluetooth device list, touch connected Bluetooth headset.

3) 选择“确定”，断开与蓝牙耳机的连接。 Select OK, disconnect the connection with the Bluetooth headset.



## 5.电子邮件--Email

登录电子邮箱log in email

a开启网络连接，put on network connection,

b在账户设置界面，输入正确的电子邮件地址和密码，点击下一步 运动相机自动完成接收和发送的服务器设置。弹出邮件查收频率等用户设置界面，完成设置，点击下一步。

in the account settings interface, input the correct email address and password,press next, the motion camera automatically complete the receiving and sending server settings. Pop up mail frequency user interface, complete the setup, click next.

c.为账户创建名称，编辑外法邮件显示的用户名，点击下一步。完成设置，

create a name for the account, edit the user name, click next. Complete set,

d.同步邮箱。Sync mailbox

撰写及发送邮件- write and send email

撰写电子邮件时，选择电子邮件 > 撰写邮件。输入电子邮件地址（收件人）、主题和邮件内容。

When writing an email, select an email. input the email address (recipient), subject and message content

按MENU键可以‘添加附件’、‘添加抄送/密送地址’，选择发送、舍弃或另存为草稿。

You can press MENU 'attachment', 'adding CC / BCC addresses', choose to send, abandon or save as draft.

查看邮箱文件夹Check the mailbox folder

点击底部文件夹选项，列出所有文件夹选项Click the bottom folder option, listing all the folder options



## 6.拨号--dial

当网络供应商的标志在显示屏上出现时，您就可以拨打或接听电话了。显示屏右上角的信号条显示网络信号强度（当有4条信号条时表示信号最强）。

When the network vendor's logo appears on the display, you can make or receive a call.

The signal bar on the top right corner of the display shows the network signal intensity (when there are 4 signals when the signal is strongest).。

### 启动拨号start dialing

打开应用程序主界面>拨号。可以在拨号框输入电话号码

open application master interface > dial. enter the phone number in the dial box



### 拨打电话 Call

在“拨号器”界面，输入想要拨打的号码。点击拨号会让你选择使用那张SIM卡拨号。输入号码时会根据输入的号码搜索本地联系人并将模糊匹配的联系人信息，显示在查询结果下。模糊匹配包括联系人号码及联系人姓名的拼音。点击某条查询结果，会呼出该号码。如需拨打分机；可以在电话接通后点击屏幕下方的“拨号键盘”来打开输入界面，输入分机号码。或者在拨号键盘输入号码时，按menu选择“暂停时间延长2秒”和“延长等待时间”来拨打分机。

Enter the number you want to dial in the "dial-up" interface. You can choose to use the SIM card. When you enter a number, you will search for the local contact number and the contact information of the fuzzy matching is displayed in the query results. Fuzzy matching includes the contact number and the contact name of the pinyin. Click on a query result, and the number will be exhaled. If you need to call the extension, you can click on the screen below the phone to open the "dial keypad" to open the input interface, enter the extension number. Or when dialing a number, press menu to select "pause time extended 2 seconds" and "extended waiting time" to call the extension

在拨号键盘输入号码后，Menu菜单可以IP拨号或快速拨号

after input the telephone number on keyboard,the Menu menu can be IP or speed dial.

视频电话 视频通话通常指基于互联网和移动互联网（3G互联网）端，通过运动相机之间实时传送人的语音和图像(用户的半身像、照片、物品等 )的一种通信方式。

---

只有3G才支持此功能。输入一个号码点击视频拨号，对方接起电话后两者可以通过摄像头来进行视频通话。

video phone Video calls are usually based on the Internet and mobile Internet (3G), through the movement of the camera between the real-time transmission of voice and images (user's body image, photos, items, etc.) of a communication. Only 3G to support this feature. Enter a number to click on the video, the other after the phone can be connected to the video calls through the camera.

拨打通话记录中电话call the call records

拨出的和接听到的每一个电话号码都存在运动相机通话记录菜单中。每条通话记录的左下角都会显示电话呼入呼出情况。可以按通话情况：呼入、呼出和未接来筛选通话记录。

Every phone number that is dialed and received is recorded. The left corner of each call will display the call and receive situation. You can press the call: incoming, outgoing and missed call records to screen.

点击单条记录，可以查看该条记录详情。点击通话记录右边电话按钮，直接拨出电话号码。

Click on the record, you can view the details of record. Click the call log on the right side of the phone button, dial the phone number directly.

接听电话answer the phone

有电话呼入，按住“电话”键向右滑动到触点即可接听来电。

There are telephone incoming, press the "call" button to the right sliding contact to answer the call.

拒接电话reject the call

有电话呼入，按住“电话”键向左滑动到触点即可拒接来电。

When it rings, press the "call" button to slide to the left to contact can reject a call.

有电话呼入，按住“电话”键向上滑动到触点即可短信拒接。选择拒接内容后，对方运动相机，会收到相应短信。

When it rings, press the "call" button and slide to top to reject and send reject messages.

Select reject content by yourself, the caller will receive it

两路通话/多方通话（电话会议）

two way calls / multi calls (conference call)

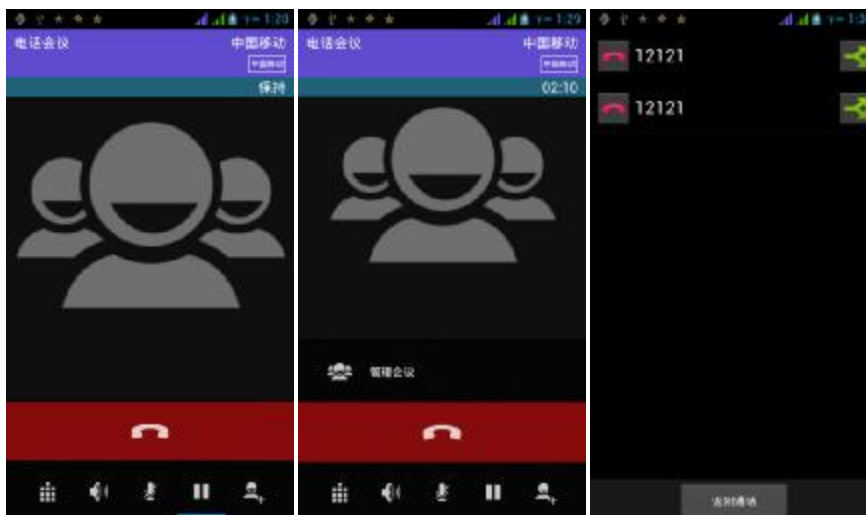
注意：此功能需要SIM卡开通多方通话功能

note: this feature requires a SIM card to open multi call function

1)运动相机已有一路通话the camera has a way of talking

点击“添加通话”，再次呼出一路通话（也可呼入一个电话，运动相机默认开启“来电等待”（设置 - 通话设置 - 语音电话 - 其他设置），等两路通话都建立后，通话界面可查看到状态。

click "add call", call another telephone no.(also can receive a call, camera motion is enabled by default "call waiting" (Set - call settings - voice telephone - other settings), after two calls established, call interface can check the status of.



3) 选择“合并通话” - 可以将两路通话合并成一个多方通话。

select the "merge" call - can be combined into a multi call call.

4) 在建立多方通话后，可以通过电话会议的小箭头，进入菜单分离电话或挂断某路电话。

After the establishment of a multi call, you can through the phone conference of the small arrow, to enter the menu or hang up a phone call.

电话录音Telephone recording

在通话过程中，Menu键>开始录音，可以对通话进行录音。

When you are speaking, press the menu key> start record, the conversation will be recorded

1) 设置>通话设置中可以对电话的其他一些功能进行设置，如：呼叫转移 - 完成相应设置并开启后，可将来电转移到其他制定号码上。

Settings > call settings can be set to other functions of the phone, such as: call transfer - complete the corresponding set and start, can be transferred to other number.

2) 在设置>通话设置>其他通话设置中，可开启“来电等待”。开启后，可使运动相机在已有一路通话的情况下，可以再呼入一路电话，接听或拒接的操作同普通电话。

In Settings > call Settings > other call settings, start" Call waiting". the motion camera can dail, listen or reject another call

语音电话Voice calls

1) 语音信箱：在语音信箱设置中可输入语音信箱号码。

voice mail: in the voice mail settings can be input voice mail number

2) IP号码前缀：设置不同SIM卡拨打IP电话的前缀

IP number prefix: set different SIM card to call IP phone

3) 来电转接：可以分别设置2张SIM卡始终、占线、无人接听、无法接通四种转接方式。

Call transfer: you can set up 2 SIM cards, always busy, no answer, unable to connect four kinds of transfer mode.

4) 呼叫限制：可以分别设置2张SIM卡的呼叫限制

Call limit: can be set respectively 2 SIM card call limit

5)其他设置：a 本机号码 b来电等待。

other settings: this machine number B call waiting.

---

## 视频电话Video phone

1) 替换本地视频的图片: 设置在本地摄像头关闭时显示给对方的图片。

Replace the image of the local video: set the image displayed when the local camera is closed

2) 替换对方视频: 当对方无视频时显示替代图片

replace the other video: show alternative pictures when the other side no video

3) 对方视频替换图片: 设置在对方无视频时显示给本地的图片

The other side of the video to replace the picture: set in each other no video when the display to the local picture

4) 打开后摄像头: 打开此项后允许切换摄像头

using the back camera: with this, the switch of back and front camera is allowed

5) 对方视图大于本地视图: 打开此项后对方视图大于本地视图

The view of the other side is larger than local view. With this, The other view is larger than the local view

6) 自动回落: 自动回落为语音电话

Automatic fall: automatic fall for voice calls

7) 拨出视频电话: 拨出视频电话时显示本地视频

Dial video phone: dial out the video phone to display the local video

8) 视频来电: 接受视频电话是显示本地视频

Receive Video call: accept the video phone is to show the local video

9) 其他设置: a 来电转接 b呼叫限制 c电话号码和呼叫等待设置

Other settings: a Call transfer B call limit C phone number and call waiting settings

## 互联网电话Internet call

其他设置 other setting

1)固定拨号fixed dialing

2)通话提醒: 开启通话50秒提醒功能

call reminder: Open Call 50 seconds to remind function

3)快速回复: 可以编辑短信拒接时的信息内容

quick reply: can reject the message information content editor

## 7.message

重要：运动相机的消息以对方的号码为标题，以类似聊天记录“会话”形式保存，而非通常的文件夹结构。其中联系人图标显示在对话左侧的是本机接收到的消息，联系人图标显示在对话右侧的是本机发出的消息。

important: the message of the camera saved by dialogue with telephone number title, not usual folder structure. what displayed on the left side of the dialog is the message received, what displayed on the right side is sent from motion camera.

发送短消息SMS给某个号码sending SMS

按下首页>信息，触碰“新建信息”按钮。

press the home page > message, touch the "new message" button.

在“编写”界面中：in the "writing" interface

点击“接收者”输入框可启动输入法，点击“输入内容”输入框也可启动输入法，可以输入字符。

click the "receiver" input box to start the input method, click the "input content" to started input method, you can enter the character.

点击“发送”时会让你选择SIM卡来发送信息。

click the "send" will let you choose SIM to send information.

当接受者和输入内容都不为空时，点击发送按钮，发送消息。

when both recipient and the input content are not empty, click the send button to send a message



群发消息给多个号码

sending messages to multiple numbers

在输入框中直接输入多个号码，各个号码间以英文的逗号分隔。

In the input box, input multiple numbers directly, and each number is separated by a comma.

点击接受者右边的头像带加号图标，可以在通讯录下选择群发联系人

Click on the right side of the head with the recipient can choose the icon, sending contacts in the mail list under the



注意：目前该运动相机群发只能支持最多100个接收者。

note: currently the motion camera group can only support up to 100 receivers.

当联系人数量超过100个添加时，会提示“收件人过多”，确定后联系人没有成功添加。必须手动再次添加。

when the number of contacts is added to more than 100, it will prompt the "recipient is too much", and the contact person is not successfully added. Need add again

信息编辑时Menu菜单键的其他功能

the other features of the Menu key when the message is edited

菜单中选择“设置”同主界面菜单键进入信息设置功能相同。

select settings on the menu as the same as enter the message setting fuction on main manu key



## 8.联系人contact

打开应用程序主界面>联系人open application master interface

默认显示运动相机联系人和SIM卡中的联系人，联系人按拼音首字母排序。

the default display of the contact person and the SIM card



2) 点击搜索图标，可以进入联系人搜索界面。click the search icon, you can enter the contact search interface.

输入数字或字母与列表中姓名部分吻合的，即会在搜索结果中显示。Enter the number or the name of the letter and the list, which will be displayed in the search results.

若是没有搜索到匹配的联系人，界面会出现‘未找到任何联系人’。

If there is no search to match the contact, the interface will appear 'no contact'.

点击“添加联系人”图标可以新建联系人。

click "add contact" button to create a new contact.

选择保存联系人到电话或某张SIM卡，进入联系人编辑界面。select the save contact phone or a SIM card, enter the contact editor interface

可以编辑联系人 头像、姓名、电话、群组、保存到和更多，然后点击“完成”。

you can edit the contact avatar, name, phone, group, save to and more, and then click finish".





4) 在联系人主界面, 点击Menu键调出菜单

At the contact interface, click the Menu key to call up the menu.

Menu键 > 删除联系人 Menu A. > delete contact

可以勾选全选, 点击删除按钮, 删除所有联系人, 包括运动相机中和SIM卡下的联系人。

可以单独勾选一个或多个联系人, 点击删除, 删除选中的所有联系人。

You can check the select, click the delete button, delete all contacts, including the movement of the camera and SIM card contacts.

Menu键 > 要显示的联系人 Menu > display the contact

可以选择所有联系人, 某张SIM卡下的联系人, 运动相机下的联系人

选择自定义, 还可在SIM卡和运动相机下单独选择是否显示所有联系人。

You can choose any contact, a contact under the SIM card, the contact person under the motion camera

Menu键 > 导入导出 Menu > Import and export

可以在运动相机本地、SIM卡和SD卡三方实现联系人信息的互相拷贝。

先选择“复制源”然后选择下一步, 选择复制联系人到, 即可完成联系人的拷贝。

Can copy between motion camera local, SIM card and SD card three party to each other

Select the "copy" first and then choose the next step, select the copy of the contact, and then complete the copy of the contact.

Menu键 > 账户 Menu > account

账户和同步设置 常规同步设置, 可以选择背景数据和自动同步。

Account and sync settings Conventional synchronous setting Background data and automatic synchronization can be selected

Menu键 > 分享可见的联系人 menu > share contacts

可以将全部联系人导入到SD卡, 或通过蓝牙、邮件、短信或彩信分享。

all contacts can be shared by SD card, mail, SMS MMS and Bluetooth

打开应用程序主界面 > 联系人, 切换到群组

Open application main page > contact, switch to group

点击“添加群组”图标可以新建群组, 群组只能保存在运动相机中

click on the "add group" icon to create a new group, which can only be saved in motion camera



---

2) 在“群组名称”栏输入群组名，在“键入联系人的姓名”栏输入联系人关键字，可以在所有联系人中搜索，并添加到群组。最后点击“完成”。

enter a group name in the group name column, enter the contact name in the name of the contact person, and then search the contact list and add it to the group. Finally click finish".

3) 在某个群组中，点击Menu键，调出菜单功能

in a group, click the Menu button to call up the menu function

a. Menu键 >修改 menu> modify

可以修改群组名称，删除或添加群组联系人Can modify group name, delete or add group contact

b. Menu键 >删除menu> delete

可以删除群组，并且不会删除联系人本身。delete groups, wont delete contacts.

c. Menu键 >发送群组消息Menu > send group messages

Automatically create new information, and add group contacts to the receipt address bar

d. Menu >发送群组邮件 menu> send group messages

若群组联系人有相同的邮件地址，则自动新建邮件，并把邮件地址添加到接收者地址栏

If the group contact has the same email address, the new message is automatically built, and the email address is added to the recipient's address bar.

## 9.浏览器Browser

### 浏览器Browser

1)在浏览器画面上，然后触碰地址栏输入网址。

touch the address bar to enter the url in browser box.

2)使用键盘输入网页地址。在您输入地址的同时，符合的网页地址会出现在画面上。您可以触碰网址直接前往该网页或继续输入网址。

Use the keyboard to enter a web address. At the same time you enter the address, the web address will appear on the screen. You can touch the URL directly to the web site or continue to enter the url.

3)页面浏览时Menu键菜单功能Menu function when the page is viewed

a.Menu键 >刷新 刷新当前浏览的网页。Menu > refresh the current view of the page

b.Menu 键 >停止 停止当前处于加载状态的网页。Menu > stop uploading the page.

c.Menu键 >主页面 如果您没有进行设置，将使用厂商预先设置的站点。默认主页是页面导航

Menu>home If you do not set up the homepage, the site will be set up by the manufacturer.

Default home page navigation



d.Menu键 >保存到书签 会把当前窗口的网址作为书签保存。点击书签列表下的书签，会打开该书签的网址。

Menu > save the current website as bookmarks.Click on the bookmark list to open it.

e.Menu键 >关闭 退出浏览器或最小化浏览器。

Menu > close to quite or minimize the browser.

f.Menu键 >保存以供离线阅读 自动保存当前网页及内容，以便下次浏览。

Menu > save the current page and content for offline reading.。

---

g.Menu键 >分享网页 选择蓝牙、邮件、短信或其他方式分享当前网页  
Menu >share the web page by Bluetooth, email, SMS or other ways to share the current Web

h.Menu键 >请求桌面版网站 以PC的方式浏览页面  
Menu > request the desktop version of the web site view webpage as on pc

i.Menu键 >书签/历史记录 切换到书签/历史记录/保存的网页界面  
Menu > bookmarks / history switch to bookmarks / history / save the web interface

j.Menu键 >设置 包含浏览器的多种设置  
Menu > setting including a variety of settings for the browser

#### 浏览器设置Browser settings

常规设置，包括主页面的设置等功能。general settings, including the home page settings and other functions.

隐私和安全，包括清楚历史记录，清除缓存等功能  
privacy and security, including clear historical records, clear cache, and other functions

辅助功能，包括文字大小，点按操作缩放等功能。  
auxiliary functions, including text size, point press operation, and other functions.

高级，包括网页浏览模式，页面调整，插件启用等功能。  
high level, including web browsing mode, page adjustment, plug-in enabled, and other functions.

带宽管理，开关载入网页时是否载入图片功能。  
bandwidth management, decide if loading pic into the web page

实验室，包括开启快速控制和全屏显示功能。  
laboratory, including the opening of the fast control and full screen display.

## 10.录音机

录音机可录制声音，并通过彩信或蓝牙快速发送,也可将录制的声音作为铃声。

The sound machine can record sound, and by quickly sending MMS or Bluetooth, also can be recorded voice as Ring.

注意：录音机仅以AMR的格式来保存音频文件。Note: the audio file is stored only in AMR format.

1) 点击程序录音机。click program recorder.

2) 保持运动相机麦克风在声源附近。Keep the camera microphone around the sound source.

录音机界面按钮功能the function of button on recorder interface

点击录音键开始录制声音，界面显示录音时长，和录音文件名。

click on the record to start recording the sound, the interface show the recording time, and the recording file name.

录音过程中点击暂停键可以暂时停止录音。

in the recording process, click pause button to stop recording

录音过程中点击停止键，停止录音，并跳出提示。让用户选择放弃或者保存录音。在此界面点击播放键，可以回放刚才的录音

in the recording process, click stop button, stop recording, and jump out of the tip. Let users choose to give up or save the recording. Click the play button at this interface, you can play back the recording

所有录音文件可在录音列表查看，点击录音文件

all the recording files can be viewed in the recording list and click on the recording file

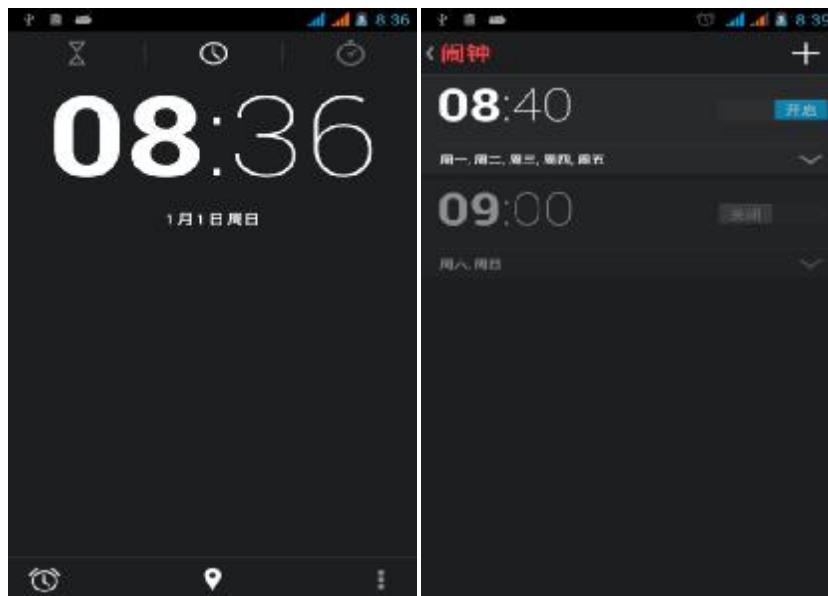


## 11.时钟 clock

时钟 clock

点击界面上左下角闹钟设置位置，进入闹钟设置界面

Click the interface on the left corner of the alarm settings, to enter the alarm settings interface



闹钟alarm clock

开启闹钟后，运动相机将在您设定的时间到达时，发出响铃或振动提醒您，以达到闹钟的作用。

open the alarm clock, when the time you set arrive, the motion camera will ring or shake to remind you to achieve the alarm clock.

按MENU键可以添加闹钟，也可以按界面上的添加闹钟来添加。您可以根据您的需要进行闹钟设置。在“闹钟”界面会有三个处于关闭的闹钟（二个闹钟分别为周一至周五8点30分，周六，周日9点）。

Press the MENU button to add an alarm clock, you can also add the alarm clock on the interface. set the alarm clock according to your needs. In the "alarm clock" interface, three are on the alarm clock (two alarm clock, respectively, from Monday to Friday at 8:30, 9:00 on Saturday, Sunday

点击闹钟标签可以编辑当前闹钟的内容，可编辑内容包括时间、铃声、振动、重复方式与标签。

click on the alarm clock tab to edit the contents of the current alarm clock, can edit the contents include time, ringing, vibration, repeat the way and label.

长按闹钟标签，可以停用或启用闹钟、修改闹钟设置、删除闹钟。

long press the alarm clock, you can disable or enable alarm clock, modify alarm settings, delete alarm.

Menu键 > 设置，可修改闹钟音量，再响间隔，自动停止闹钟时间，闹钟铃声等  
Menu > settings, can modify the alarm clock volume, and then ring interval, the time automatically stop the alarm clock, alarm clock ring, etc.

---

## 12.文件管理File management

文件管理便于管理手机里面的文件、软件，支持复制、粘贴、移动或删除；还可以新建文件和文件夹，并可以对各文件进行重命名等操作。

File management to facilitate the management of the file, software, support copy, paste, move or delete; also can be a new file and folder, and can be renamed and other documents. 您还可以将手机中的文件按手机和存储卡两种类型进行分类，以便于选择查看不同存储空间的文件

You can also classify the files in your mobile phone by using your phone and memory card to check file in different storage space.



### 13.相机Camera

#### 相机Camera

开启相机 start camera

按下首页，触碰菜单，选择相机。如果你要摄影，点击切换菜单切换到摄像模式  
press the home page, touch the menu, select the camera. If you want to take picture, click switch to camera mode

点击前后摄像头切换按钮 可在默认摄像头和自拍镜头间切换。

Click the front and back camera switch button to change the different camera

#### 拍摄照片Take photos

使用相机Use camera

1) 用屏幕对准您的拍摄主体。use the screen to align your subject.

2) 直接在屏幕点击快门按钮，拍摄照片。

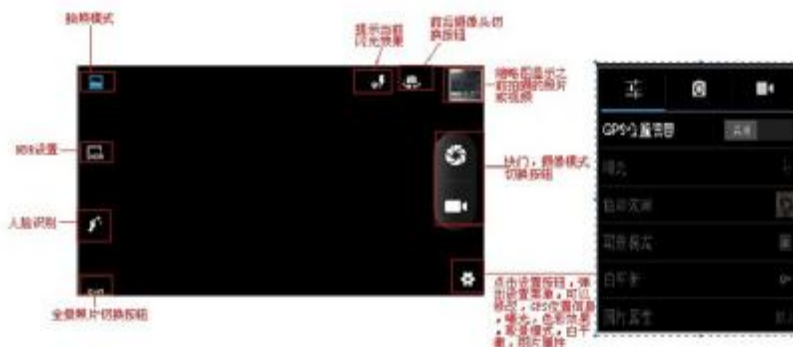
Click the shutter button directly on the screen, take pictures.

3) 拍摄后，照片自动以拍照时间为文件名，保存至图库默认相机照片文件夹中。

After shooting, the camera automatically name file name as time and save to the gallery default camera photo folder.

4) 在照片取景图像右上角，显示前一张拍摄照片的预览图。触碰预览框，则全屏显示前一张照片，并可放大照片查看细节。

The top right corner of viewfinder image, show preview of last pic. Touch the preview box, then a full screen display of the previous photo, and can zoom in to see the details of the photo.



#### 相机设置camera settings

拍照模式：人脸美化、全景模式、情境相片模式。

camera mode: face beautification, panoramic mode, scene photo mode.

GPS位置信息：GPS位置信息关闭和开关GPS

GPS position information: GPS position information off and on

HDR设置：可以开启高动态光照渲染

HDR setting: open up high dynamic illumination rendering

4) 闪光模式：开启闪光灯、自动闪光灯、关闭闪光灯

Flash mode: flash, Automatic flash, flash off

5) 白平衡：自动、白炽光、日光、荧光、阴天、微光、阴影、暖荧

White balance: automatic, incandescent, fluorescent, fluorescent, cloudy, light, shadow, warm fluorescence

6) 色彩效果：无、单色、棕褐色、负片、黑板、白板、水蓝色效果



---

Color effect: No, color, brown, film, blackboard, whiteboard, blue water effect

7) 取景模式，可以选择自动、普通、夜景、日落、派对、肖像、风景、夜景肖像、影院、海滩、雪景、防抖、烟火、运动、烛光。

Framing mode, you can select automatic, general, night, sunset, party, portrait, landscape, night portrait, theater, beach, snow, anti shake, fireworks, movement, candlelight.

8) 图片属性：锐度，色度，饱和度，亮度，对比度

Picture: sharpness, color saturation, attribute, brightness, contrast

9) 相机设置：曝光值、自拍计时、锐度、色度、饱和度、亮度、对比度、照片大小、ISO感光度、测光模式，避免闪烁、还原默认设置。

Camera settings: the exposure value, self timer, sharpness, hue, saturation, brightness, contrast, photo size, ISO, metering mode to avoid flicker, restore the default settings.

## 13.2 摄像机Video camera

### 事前准备prepare beforehand

使用相机或摄影机前请先确保储存卡没有被PC挂载。您用运动相机拍下的所有照片或影片都会储存在储存卡上。

Please ensure that the storage card is not mounted by PC. All the photos and videos you take with the motion camera is saved by storage card.

### 开启摄像机 start video camera

按下首页，触碰菜单，选择相机。切换到摄像模式。屏幕会自动切换成横向模式。

press the home page, touch the menu, select the camera. Switch to video camera mode.

Screen will automatically switch into horizontal mode.

### 拍摄视频shooting video

1) 用屏幕对准您的拍摄主体。Use the screen to align your subject.

2) 直接在屏幕触碰快门按钮。Touch the shutter button directly on the screen.

3) 拍摄后，录像自动以拍摄时间为文件名，保存至图库默认相机照片文件夹中。

After the shooting, the video automatically saved to camera photo folder.with the name of shooting time

4) 在照片取景图像右上角，显示前一个视频的预览图。触碰预览框，则全屏显示视频，触碰播放按钮可以播放视频。

The top right corner of viewfinder image, there is previous video preview. Touch touch the play button to play video.



## 14. 图库Gallery

### 图库查看Gallery view

#### 1) 图库界面Gallery interface

- a. 在图库主界面，右上角相机按钮，可以快速切换到相机程序

In the gallery main interface, there is camera button on the right upper corner , you can quickly switch to the camera

- b. 文件夹平铺在图库主界面，文件夹缩略图上显示文件夹名和内含文件个数。

Folder tile in the gallery of the main interface, display a number of folder names and file folders containing thumbnail.



#### 1) 文件夹界面folder interface

- a. 在图库主界面，右上有幻灯播放按钮，点击则以幻灯方式循环播放所有图片文件。

In the gallery of the main interface, right on the slide button, click to slide loop all image files

- b. 点击图片，进入图片查看界面。Click on the picture to see the interface.

- c. 长按选择某一图片文件，弹出相应操作。Long press select a picture file, will show the corresponding operation.



### 分享图片share pictures

在文件夹下长按选中照片或在图片查看界面，选择分享。分享方式包括蓝牙、邮件、信息等。

in a folder, long press the selected picture or pick up in Gallerye. Share by Bluetooth, email, information, etc..

使用邮件发送图片：选择Gmail或电子邮件，图片会自动附加到电子邮件。撰写您的信息，点击发送。

use email to send pictures: select Gmail or email, the image will be automatically attached

to the email. Write your message, click send.

使用信息发送图片：选择信息，图片会自动附加到彩信中。撰写您的信息，点击发送。  
send pictures by SMS: , pictures are automatically added to the multimedia message. Write your message, click send.

使用蓝牙发送图片：在蓝牙列表下，选择已配对的蓝牙设备，通过蓝牙传送图片。

Use Bluetooth to send pictures: in the Bluetooth list, select the matched pairs of Bluetooth devices, through Bluetooth transfer pictures.

查看照片View Photos

在照片查看界面，在屏幕上左右滑动，可以向前或向后查看照片

In the photo viewer interface, slide around the screen, you can move forward or backward to view photos

#### 4) 编辑图片Edit pictures

色彩效果：无，冲压，复古，黑白，漂除银影，瞬时，拿铁咖啡，蓝色，版印，负冲  
color effect: No, stamping, retro, black and white, silver in bleaching, instantaneous, coffee latte, blue, print, negative impact

修剪：拉直，修剪，旋转，镜像pruning: pruning, straightening, rotation, mirror

编辑亮度：自动调整色彩，曝光，晕影，对比度，阴影，自然饱和度，锐度，曲线，色调，饱和度，黑白过滤器

editing brightness: automatically adjust the color, exposure, vignette, contrast, shadows, natural saturation, sharpness, curve, hue, saturation, color filter



#### 6) 修剪图片 Cut picture

a. 若要调整修剪器的大小，请按住裁切器工具的边缘。出现修剪器箭头后，将手指从修剪器中心向内或向外拖曳，即可调整大小。

If wanna cut the picture, Please hold down the edge of the cutting tool. After the clip appears, Drag your fingers from the center or to the center of the clip to change the size

b. 若要在调整大小时保持修剪器的显示比例，请按住四个角落的其中任一个。

If you wanna keep the display ratio when cut the pic, pls hold down one coner

c. 若要将修剪器移到图片的其它区域，请按住裁切器内部，然后拖曳手指移到所要的位置。

To move the clip to the other area of the picture, press and hold the inside of the crop, and then drag the finger to the location you want.

观看影片watch the movie

1) 在图片库画面中，触碰视频相簿，然后再选择您想要观看的视频，即可开始播放视频。

In the picture library screen, touch the video album, and then select the one you want to watch the video, you can start playing video.

2.) 触碰屏幕会显示播放控制条。Touch the screen to display the control bar.

a. 进度控制条：拖动控制条可以移动到任意播放点。

---

Control bar: drag control bar can be moved to any play point.

b. 屏幕缩放按钮：按比例播放、全屏播放，最大化播放。

Screen zoom button: press the proportion of play, full screen playback, the maximum play.

暂停或继续播放：播放时点击暂停视频，暂停时点击继续播放视频。

Pause or continue to play: when playing, pause the video, click continue to play video.



## 15. 音乐Music

音乐可播放运动相机储存卡中的数字音频文件。音乐支持下列的音乐文件格式：M4A、MP3、WAV、FLAC格式。

Digital audio files in the music can be played by the camera's memory card. Music supports the following music file formats: M4A, MP3, WAV, FLAC format

开启音乐 start playing music

按下首页，触碰应用程序图标，然后触碰音乐。出现音乐媒体库画面。

Press the home page, touch the application icon, and then touch the music. Music media library screen.

音乐媒体库Music Media Library

您的音乐会依下列四个类别进行分类：艺术家、专辑、歌曲和播放列表。触碰其中一个类别，即可查看该类别的列表。

Your music is classified by the four categories: artist, album, song, and player list. Touch one of the categories to see all the list of the categories.

在类别内持续触碰画面，直到出现您想要播放的音乐为止。例如，如果您触碰艺术家，就会出现以英数字母顺序排序的艺术家列表。如果您触碰其中一个艺术家，就会开启列表，显示所有的专辑或音乐。选取其中一个专辑，就会显示该专辑的歌曲列表。

Continue to touch the screen in the category until find the music you want to play. For example, if you touch artist, you'll have a list of artists ordered by alphabet. If you touch one of the artists, you will open the list, showing all the albums or music. Select one of the albums, which will show a list of the songs on the album.



音乐播放器Music Player

在音乐器播放界面，显示艺术家名、专辑名以及歌曲名称。

in the music player interface, showing the artist name, album name and song name.

右侧显示当前播放模式，循环播放、随机播放或者排队播放等。

On the right show the current playback mode, playback, random play, or waiting in line.

底部进度条可以控制当前播放进度、并可在队列播放时实现快进快退等操作。

At the bottom of the progress bar can control the playback progress, and can achieve Fast forward and rewind

a Menu键 >派对随机播放menu > party random player

提示 您可以在音乐媒体库或播放画面上，以随机顺序播放媒体库中所有的歌曲。按下Menu键，然后触碰派对随机播放。接着就会开始播放随机选取的第一首歌曲。若要

关闭派对随机播放，请按下Menu键，然后触碰关闭派对随机播放。

Tips you can play in the music media library or play on the screen, broadcast all of the media library in a random order. Press the Menu button, touch the party randomly. Then you start playing the first song that was randomly selected. To shut down the party random player, press the Menu button, and then touch party random player to close it

Menu键 > 添加到播放列表 添加当前播放的歌曲到用户播放列表。

Menu > add to the playing list add the current player to the user's play list

C Menu 键 > 用作铃声 把当前歌曲设成运动相机铃声

Menu > used as the ring set the current song to a motion camera as ring

D Menu键 > 删除 删除当前播放的歌曲，并且是从存储器中永久删除。

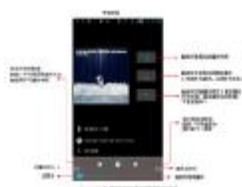
Menu > Delete delete the current player's song, and it is permanently deleted from the memory.

E Menu键 > 音效 可以打开均衡器，用户可自行调节音乐效果。

Menu> Sound effects turned on the equalizer, the user can adjust the music effect.

F Menu键 > 音乐库 返回音乐主界面

Menu> Music library return to the main music interface



建立播放列表create a play list

1) 触碰音乐媒体库画面上的任一类别。

Touch any class of music media library.

2) 在出现的列表中，可以按住屏幕上下滑动浏览到您想要新增至播放列表的艺术家、专辑或歌曲。

In the list, you can press and hold down the screen to browse to the artist, album or song that you want to add to the list.

3) 按住艺术家、专辑或歌曲，然后触碰选项选单中的 添加到播放列表。

Hold the artist, album or song, and then touch the options menu is added to the playlist.

4) 在添加到播放列表窗口中，触碰新建播放列表。

In the play list window, touch the new play list.

5) 输入新播放列表的名称，然后触碰保存。

Enter the new play list name, then touch save.

管理播放列表manage the play list

进入音乐媒体库画面，然后触碰播放列表。

Enter the music media library screen, and then touch the play list.

若要播放播放列表中的歌曲，请触碰播放列表的名称。

play the songs in the play list, please touch the name of the play list.

若要删除播放列表，请按住播放列表，然后触碰删除。

To remove the play list, press and hold the play list, then touch delete.

若要重新整理歌曲或移除播放列表中的歌曲，请按住播放列表，然后触碰选项选单中

---

的编辑。

rearrange or remove songs on playing list, press and hold the playlist, then touch edit

若要删除播放列表中的歌曲，请按住歌曲，然后触碰从播放列表中删除。

if you want to remove songs from the play list, hold down the song, touch delete from the play list.

若要重新命名播放列表，请按住播放列表，然后触碰选项选单中的重新命名。输入新的播放列表名称，然后触碰保存。

rename the playlist, please press the playlist, and then touch the rename. Enter a new player list name, then touch save.

若要把歌曲设成运动相机铃声，然后触碰选单中的用作运动相机铃声。该歌曲就会设成预设的运动相机铃声。

set into motion camera tones, ps touch the menu as a moving camera ring. The song will be set as motion camera tones



## 16. 运动相机Sports Camera

### 运动相机软件安装Software installation for Sports Camera

运动相机软件可支持的客户端：苹果手机，安卓手机。Camera software to support the client: Apple mobile phone, Android phone.

#### 1：下载运动相机软件安装Download Sports Camera Software installation

方法：苹果手机通过safari打开femtod.com网站，下载安装运动相机音乐播放器APP。  
Methods: Apple's mobile phone go to the website femtod.com by safari, download and install the camera music player APP.

安卓手机通过MotionCamera.apk进行安装。

Android phones are installed by MotionCamera.apk.

#### 二：运动相机连接使用Motion camera connection

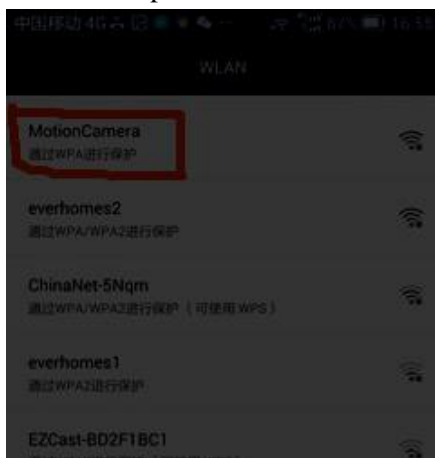
1.先将运动相机的远程应用软件开启First, turned on the remote application software of the camera



2.手机WiFi热点中找到MotionCamera（默认密码123456789）并与运动相机建立热点连接。

WiFi (default password 123456789) is found in the hot spot of the mobile phone Motion Camera, and the hot spot is connected with the camera.

1)：在手机上搜索MotionCamera的wifi热点Search for WiFi on mobile phone Motion Camera hotspot



2)：输入WiFi密码，默认初始密码是：123456789 input the WiFi password, the default password is: 123456789



3) 手机和运动相机已建立热点的连接 Mobile phones and motion camera linked by hot spots



3.进入手机运动相机软件。 Enter the mobile camera software

1) 运动相机软件的主界面 Main interface of camera software



2) 在主界面可以做相关设置。例如：热点名字的重置，热点密码的重置，远端存储位置（指运动相机：文件管理—设备存储—MotionCamera），本地存储位置（指手机终端：文件管理—设备存储—MotionCamera）。

set up the main interface. For example: hot spots names reset, hot spot password reset,

remote storage location (motion camera: file management, equipment storage, MotionCamera), the local storage location (mobile terminal: file management, storage, MotionCamera).



1) : 进入相机界面，可以拍照，录像及设置按钮

Into the camera interface, you can take pictures, video and set buttons



2) “设置” 相关菜单。可以对远程相机，曝光，色彩效果，取景模式，白平衡，照片大小进行设置。

2) "Settings" menu. The remote camera, set exposure, color effects, viewfinder mode, white balance, and picture size.



设置—远程相册：可以对照片和视频进行本地存储和远端删除。打开相片/视频文件—单击相片/视频的列表文件可以将相片/视频下载到手机存储上，长按相片/视频的列表

---

文件是可以对运动相机的相片和视频进行删除操作。

Set up - Remote Photo Album: you can store and delete photos and videos for local saved and remote delete. Open photo / video file - click on the photo / video of the list file can be downloaded to the mobile phone store, long press photos / video of the list file, delete the pictures and videos in camera



## 17. 设置setting

您的服务提供商可能已预设了部分设备设置，因而您可能无法更改这些设置。

Your service provider may have set up some of the device settings, so you may not be able to change these settings.

无线和网络Wireless and network

SIM卡管理SIM card management

触碰可以选择SIM卡或停用SIM卡，停用时状态栏显示飞行模式。

Touch can choose SIM card or disable the SIM card, when the status bar displays the flight mode.

默认SIM卡，可以选择语音电话、视频电话、信息及是否打开数据连接或者选择使用那张SIM卡。

The default SIM card, you can choose voice phone, video phone, information and whether to open the data connection or choose to use the SIM card.

WLAN开关和设置 触碰WLAN打开。打开WLAN以后会自动搜索可用网络，没有设置密码的可直接连接使用，设置密码的需输入密码连接可使用。

WLAN switch and set touch WLAN to open. After opening the WLAN will automatically search the available network, no password can be set directly connected to use, set up a password to enter the password can be used to connect.

注：打开WLAN再打开离线模式，WLAN会自动关闭；打开飞行模式再连接WLAN，WLAN可正常使用。

Note: open the WLAN to open the offline mode, WLAN will automatically shut down; open the flight mode to connect WLAN, WLAN can be normal use.

WPS连接 无线AP和运动相机均需要支持AOSS，可以直接连接无需输入密钥。

WPS connect the wireless AP and motion camera are required to support AOSS, you can directly connect without the need to enter the key.

注：若无线AP具有AOSS功能 则运动相机WLAN在SSID项名

Note: if the wireless AP has the function of AOSS, the motion camera

Is named SSID WLAN on wireless list

3) 蓝牙开关和设置 触碰蓝牙打开。打开蓝牙后会自动搜索附近开启蓝牙功能的设备。

Bluetooth switch and settings touch Bluetooth open. After opening the Bluetooth will automatically search the device nearby with Bluetooth function working.

4) 流量使用情况 可以监控流量及设置移动数据流量限制，流量超过限制时会自动关闭移动数据服务。

can monitor and set up the limit of the mobile data flow, the flow will automatically close when the flow exceeds the limit.

5) 飞行模式 触碰可打开/关闭。打开离线模式后，运动相机移动网络相关服务被禁。

flight mode touch can be turned on / off. After opening the off line mode, network related services are prohibited.

6) VPN VPN网络 VPN network

7) 网络共享与便携式热点 将您运动相机的移动数据连接通过USB分享。

shared your camera GPRS through USB keyboard.

8) WLAN Direct 允许无线网络中的设备无需通过无线路由器即可相互连接

Devices in a wireless network are connected to each other through a wireless router.

9)移动网络 进入“移动网络设置”界面，其中包括： a 数据漫游 b 接入点名称 c 网络运营商。

network settings interface includes: a data roaming B access point name C network operators.

10)GPRS数据优先模式 默认勾选，电话优先。使用GPRS上网时，电话可以正常呼入。

GPRS data priority mode default check, call priority. When using GPRS, can receive the call

设备Equipment

1) 情景模式 model

a. 该选项为您提供运动相机在接收来电、通知等状态时的铃声设置。包括：振动、音量、运动相机铃声、通知铃声、和反馈（按键操作音、选择操作音、屏幕锁定提示音、触感）。以适应用户所处的各种环境。

The option providing your ring setting in the reception of the call, notification, etc..

Including: vibration, volume, motion camera ring tones, notice bell, and feedback (keyboard voice, selecting voice, screen lock voice, touch voice) for the user's environment.

b. 选择“标准/静音/会议/户外，按右边的圆点，圆点心为蓝色时表示开启。

Select "standard / mute / conference / outdoor, press the right dot, on is blue.

c. 音量：包括铃声和通知音量与闹钟的音量设置，可以手动滑动来选择。

Volume: the volume and the volume of the alarm clock is set up, you can manually slide to choose

d. 分别为语音和视频来电是遏制铃声

Respectively for voice and video calls is to curb the ring

显示display

a 亮度 调整屏幕亮度Brightness adjust screen brightness

b 壁纸 可以在壁纸图库，图库程序或动态壁纸库中设置运动相机壁纸  
wallpaper can be set up in the wallpaper gallery, library procedures or dynamic wallpaper library

c 自动旋转屏幕 旋转运动相机改变方向

automatic rotating screen rotating camera to change direction

d休眠 调整屏幕自动锁定前的延迟。

sleep adjustment screen automatically lock the front delay.

e 字体大小 设置系统的字体大小 Character size Set up system character size

存储storage

可以查看SD卡和运动相机内存使用情况。

can view the memory usage of the SD card and motion camera.

b.可以卸载或格式化SD卡。 unloaded or format the SD card.

c.可以选择默认存储器can choose the default memory

电池battery

显示开机使用时间及各模块使用电量的大致情况

show the using time and the general situation of the power of the Application

应用程序applications management

---

管理应用程序 管理和删除安装的应用程序。

application management manage and removal installed applications.

正在运行的服务 点击‘停止’正在运行的服务，确认后该服务从“正在运行的服务”列表中消失。

The service is running click 'stop' the running the service, confirm it disappear from the list of working

个人Individual

1)位置信息访问权限location information access rights

a.允许访问我的位置信息 allow you get me position

允许得到您许可的应用使用您的位置信息allow get your location information if you allow

b.GPS卫星定位 GPS satellite positioning

GPS卫星定位打开和关闭 GPS satellite positioning on and off

WLAN和移动网络位置信息 WLAN and mobile network location information

允许应用使用Google 位置服务更快地大致了解您所在的位置。系统将收集匿名位置数据并将其发送给Google.

allow the Google location service to get your location. The system will collect anonymous location data and send it to Google

2)安全security

设置屏幕锁定使用图案、PIN或密码锁定屏幕。

Set the screen lock using pattern, PIN or password to lock screen

触碰“图案”，第一次设置解锁图案时会有一个简单的说明和示例，点击“下一步”即可进入后续步骤“绘制解锁图案”。

touch the "pattern", the first time to set the unlock pattern, there is a simple description and examples, click the next to enter the next step to draw the unlock pattern".

触碰PIN输入数字PIN给屏幕解锁。Touch PIN input digital PIN to unlock the screen.

触碰密码 Touch password

可以设置密码给屏幕解锁。set up password to unlock the screen.

触碰无 Touch disable

停用屏幕解锁保护。stop screen unlock protection.

b. SIM卡锁定输入（4-8位数字）的PIN可以设置SIM的锁定。

SIM lock input (4-8 bit) PIN can set up lock the SIM.

SIM卡的PIN码（个人识别码）是防止SIM卡被非法使用。PIN码通常随SIM卡一起提供。初始值由服务供应商提供。

SIM card PIN code (personal identification code) is to prevent the illegal using of SIM card. PIN code is usually supplied with the SIM card. The initial value is provided by the service provider.

修改被锁定的PIN码时，需要开启“SIM锁”，然后进入更改密码界面，运动相机会自动提示旧的PIN码输入以及要求输入两次新的PIN码，最后运动相机将提示PIN码修

---

改成功。如果连续三次输入PIN码都有错误，SIM卡PIN码将自动上锁，PUK码通常随SIM卡一起提供。如果未提供，应到服务供应商处获取此密码。

Modify the PIN code, you need to open the SIM lock, enter changing password interface, the camera will automatically prompt the old PIN code input as well as the required input two times the new PIN code, the final motion camera will be prompted to modify the PIN code. If there are errors in the PIN code for the three time in a row, the PIN card will be locked automatically, and the PUK code is usually supplied with the SIM card. If not provided, the password should be obtained from the service provider.

如果连续10次输入错误的PUK码，则SIM卡将被永久锁住。

If the PUK code is 10 times in a row, the SIM card will be permanently locked.

c. 密码可见 Password visible

输入时密码可见。 password is visible when inputting

d. 未知来源 Unknown sources

允许安装非电子市场提供的应用程序。

allow the installation of non electronic markets to provide applications.

e. 受信任的凭据 Trusted credentials

允许应用程序访问安全凭证和其他凭证。

allow applications to access security credentials and other documents.

f. 从SD卡安装 From SD card install certificate

Install a certificate from the SD card on the SD card.

g. 清除凭据 Clears the credentials

清除所有内容的凭证存储并重置其密码。

clear all the contents of the certificate store and reset its password.

语言和输入法 language and input method

选择语言 Chose language

包括中文简体和繁体等，默认支持的15种语言

including Chinese simplified and traditional, etc., the default support 15 languages.

个人词典 personal dictionary

向个人词典中添加字词以及从用户词典中删除字词。可以按“+”键添加字词，此后输入法输入时会自动与用户词典里的字词匹配并显示。

add words and phrases from the user dictionary to the personal dictionary. You can add the word "+" button, and then automatically and the user dictionary when you enter the input method.

默认输入法设置 default input method settings

可以选择默认打开输入法键盘时调用的输入法

select default open input method when using keyboard

Android键盘设置 Android Keyboard setting

语音搜索 voice search

可以设置搜索语言，过滤图片和文字

set up the search language, filtering pictures and text

备份和重置 backup and reset



---

备份我的数据 backup my data

将应用程序数据、WLAN密码以及其他设置备份到Google的服务器

backup my data to the application data the WLAN password, and other settings to the Google server

恢复出厂设置 restore the factory settings

清除运动相机上的所有数据。remove all the data in camera.

账户account

添加账户 添加公司账户，电子邮件账户

add the account to the company account, email account

系统system

日期和时间date and time

自动确定日期和时间使用网络提供的时间。

automatically determines the network date and time

b. 自动确定时区 automatically determines the time zone

使用网络上的时区 using the network time zone

c.设置日期 set up date

可以滑动年份、月份和日期来设置日期。

Slide year, month and date to set up the date.

选择时区 select the time zone

根据你所在地选择所在地的时区，中国‘选择GMT+08:00、中国标准时间’。

based on your location choice of time zone, China 'choice GMT+08:00, China standard time'.

设置时间 set the time

滑动小时、分钟和上下午的滚轮来设置时间。

slide the hours, minutes, and the afternoon's wheel to set the time.

使用24小时格式 uses 24 hour format

打开使用24小时，关闭使用12小时。24 hours on, 12 hours off

选择日期格式 select date format

有7种格式日期 7 date formats

所在区域area

(2010-12-31)

12-31-2010

31-12-2010

2010-12-31

周五，12月31日，2010年Friday, 2010, December 31st

周五，31日 12月2010年Friday, 31 2010 December

2010年12月31日，周五2010, December 31, Friday

定时开关机 on and off the camera at the time

可以设置定时开机/关机时间，也可以选择定时开关机起效的时间。重复或一周的某一天。

can set up the time to start / off time, also can choose the time switch machine time. A day or a week.

辅助功能auxiliary functions

---

大号字体 big Character

使用网络提供的时间。Using network time

按“电源”按钮结束通话 打开后，通话时，按下“电源”将结束通话而不是关闭屏幕

press the "power" button to end the call, press "power" will end the call and not close the screen if you are talking

说出密码 tell the password

触摸和按住延迟touch and hold the delay

安装网页脚本 install web script

快速开机 turn on fast

关闭/打开 on/off

快速开机 turn on fast

开发人员选项 development personnel options

a. USB调试 USB debugging

USB调试仅用于开发工作。使用该功能可在计算机和移动设备之间复制数据。

USB debugging is only used for development work. Use this feature to replicate data between a computer and a mobile device.。

b. 保持唤醒状态 keep awake

打开后充电时屏幕不会休眠The screen will not sleep when the charge is kept awake

c. 允许模拟地点Permit simulation site

关于相机 about camera

可以查看到状态信息和版本等情况。

You can view the status information and version, and so on

## 18.运动相机使用注意事项

### Motion Camera using note

您的电话是具有优良设计和工艺的产品，应小心使用。下列建议可以帮助您遵守包修条款，延长运动相机的使用寿命。

The motion camera is a product with excellent design and process,pls be careful. The following suggestions can help you comply with repair terms, prolong the service life of the camera movement.

将运动相机及其零部件置于儿童拿不到的地方。

The motion camera and components in the place where children can not reach

使运动相机保持干燥，雨水、湿气和各种液体都可能含有矿物质，会腐蚀电子线路。

keep the camera dry, rain, moisture and all kinds of liquid may contain minerals, will corrosive to the electronic circuit

当电池充电时不要用潮湿的手接触运动相机，这样会引起电击伤害到人或使运动相机损坏。

do not touch the camera with wet hands when the battery is charged, , which will cause the electric shock to hurt or damage the camera.

避免将运动相机置于温度过高（25°）的环境中。高温将缩短电子设备的寿命，损坏电池，扭曲或熔化某些塑料部件。

avoiding high temperature（25°） environment. High temperature will shorten the life of electronic equipment, damage the battery, distort or melt some plastic parts.

---

避免将运动相机置于温度过低的环境中。当温度升高时，运动相机内部将可产生导致电子线路损坏的水汽。

avoid low temperature environment. When the temperature rises, the water vapor can cause the damage of the electronic circuit.。

避免将运动相机置于多灰尘、肮脏的场所，否则运动相机部件可能受损

Avoid the dusty, dirty place, or camera parts may be damaged

避免使运动相机置于点燃的香烟，明火或任何热源的附近。

avoid near any ignition of a cigarette, open flame and other heat source.

不要自行拆卸运动相机，非专业的处理方式会导致运动相机的损坏。

do not disassemble the camera, the unprofessional operation will lead to damage

不要从高处掉落、敲击或摇晃运动相机，粗鲁的使用方式会损坏内部的电路板。

don't drop, knock or shake the camera from a high place, the rude way will damage the inside circuit board.

不要用颜料涂抹运动相机，因为涂料会阻塞耳机，话筒或其它可移动配件，并导致无法正常使用。

do not apply paint on camera to avoid blocking the headset, microphone or other portable parts, and can not normally working anymore.

使用干净、柔软、干燥的布清洁摄像头。禁止使用有害化学品，清洁剂等液体清洁运动相机

using a clean, soft, dry cloth to clean the camera. Forbidden harmful chemicals, cleaning agents, and other liquid cleaning motor

如运动相机，电池，充电器或运动相机配件出现故障，请送至最近的合格服务中心进行检查。

If any problem with our motion camera, battery, charger or sports camera accessories ,please send to the nearest qualified service center for inspection.

服务中心的人员将向您提供帮助，如果需要的话会安排运动相机的维修。

Service Center staff will provide you with help, if necessary, will arrange for the maintenance of the camera.

---

This device complies with part 15 of the FCC Rules. Operation is subject to the condition that this device does not cause harmful interference and this device must accept any interference received, including interference that may cause undesired operation. changes or modifications not expressly approved by the party responsible for compliance could void the user's authority to operate the equipment.

NOTE: This equipment has been tested and found to comply with the limits for a Class B digital device, pursuant to Part 15 of the FCC Rules. These limits are designed to provide reasonable protection against harmful interference in a residential installation. This equipment generates, uses and can radiate radio frequency energy and, if not installed and used in accordance with the instructions, may cause harmful interference to radio communications. However, there is no guarantee that interference will not occur in a particular installation. If this equipment does cause harmful interference to radio or television reception, which can be determined by turning the equipment off and on, the user is encouraged to try to correct the interference by one or more of the following measures:

- Reorient or relocate the receiving antenna.
- Increase the separation between the equipment and receiver.
- Connect the equipment into an outlet on a circuit different from that to which the receiver is connected.
- Consult the dealer or an experienced radio/TV technician for help.

FCC RF Radiation Exposure and SAR Statements SAR Statement The Archos 7 home tablet has been tested for body-worn Specific Absorption Rate (SAR) compliance. The FCC has established detailed SAR requirements and has established that these requirements.

RF Exposure Information The radio module has been evaluated under FCC Bulletin OET 65C (01-01) and found to be compliant to the requirements as set forth in CFR 47 Sections, 2.1093, and 15.247 (b) (4) addressing RF Exposure from radio frequency devices. This model meets the applicable government requirements for exposure to radio frequency waves. The highest SAR level measured for this device was 1.183 W/kg.