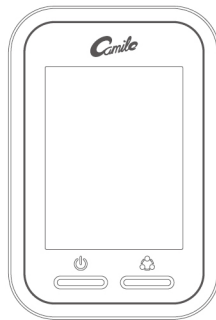




## Quick-Start Guide 快速入门指南



[www.miniwing.com](http://www.miniwing.com)



杭州米为科技有限公司

Hangzhou Miniwing Technology Co.,Ltd

E-mail: [support@miniwing.com](mailto:support@miniwing.com)

浙江省杭州市西湖区三墩镇金蓬街368号同硕科技园

No.368 Jinpeng Street,Sandun Town, Hangzhou, China.

## Contents

Package Contents .....	01
Product Guide .....	01
About the Device .....	02
Installation .....	03
Functions .....	04
Camile App Features .....	09
Warning .....	13
FCC Statements .....	14

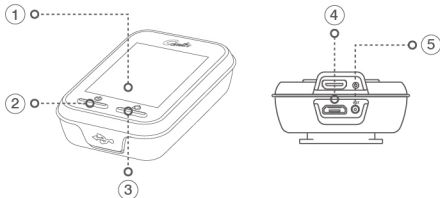
## 目 录

产品清单 .....	17
产品介绍 .....	17
使用场景 .....	18
安 装 .....	19
功能说明 .....	20
App功能 .....	25
注意事项 .....	29

## 1 Package Contents

Camile R20 Cycling Camera x1、Mount x1、Rubber ring x4、  
Micro USB Cable x1、R20 Quick Guide x1、Warranty Card x1

## 2 Product Guide



### ① 【Display】

### ④ 【Micro USB Cable】

Charging Only

### ② 【Power Button】

Press and hold to  
turn on/off the device

### ⑤ 【Reset Button】

Press to reboot the device

### ③ 【Mode/Bluetooth Button】

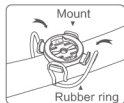
Short press - Change stat mode  
Press and hold - Bluetooth on/off  
(SSID:CamileR20\_XXXXXX)

## 3 About the Device

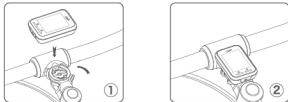
R20 can be used on the handlebar of most bicycles and scooters. Using GPS, the Camile R20 can record your route, as well as display and save cycling stats. Connect with your phone via Bluetooth and you can view it all through the Camile app.

## 4 Installation

- 1 As the following diagram, take the two rubber rings and loop each one diagonally round the handlebar or stem fitting them in opposite directions:



- 2 Place and rotate (90° anticlockwise or clockwise) the Camile R20 device into the mount as follows, you should hear a click when it's correctly in place (the arrows on the mount represent the direction the device should face):




## 5 Functions

### 1 Power On/Off

Press and hold the power button to turn on/off the device.



### 2 GPS Positioning

After you turn on the device, the flashing GPS icon  indicates the device is searching for satellites. When it turns solid, it means the GPS is on and you can start your trip.

### 3 Stat Modes

Short press the mode button to toggle through stat modes: ODO–Total Distance, DST–Single Trip Distance, MXS–Maximum Speed, AVS–Average Speed, PTM–Time Plan, PDST–Distance Plan.

(PTM and PDST will only appear when you set a training plan in the App)



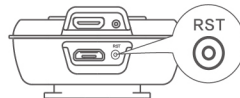
### 4 Auto Stand-by

When the Camile R20 is in a stationary state for more than 10 seconds, it will automatically stop tracking. When tracking has stopped for more 15 minutes, it will switch to stand-by mode (only displays the time). Any action will wake the device from its stand-by mode. After one hour in stand-by mode the device will automatically turn off.



### 5 System Reset

If you need to reset the device, press the reset button located at the bottom of the device. Device will reboot automatic after the reset button be pressed. Your stats will still be stored on the device after the reset.



### 6 Factory Reset

Make sure that the device power on, press the both left and right button more than 5s, factory reset done and all the date stored in the device will be deleted.

## 7 Bluetooth On/Off

Press and hold the mode button to turn on/off the Bluetooth. The Bluetooth icon blinks to indicate that the device Bluetooth is on, but not connected to the App. If the Bluetooth icon is on, it indicates that the device is connected to the App successfully.



## 8 Time Calibration

Connect your Camile R20 to your phone via Bluetooth, the time on the device will automatically adjust to your local time after it's successfully connected.



## 9 Connect to the Camile App

First turn on the Bluetooth of the Camile R20 and of your mobile device. In the Camile App, select the R20 device icon and click the connection button to connect.



## 6 Camile App Features

### 1 Route Sync

After a trip with the Camile R20, you are able to view your routes and stats on the Camile App. You can then share your route with your friends over social media. (The device uses a 'looped' storage mode, so to avoid old data being automatically deleted, we recommend syncing your data after each trip.)



### 2 Unit Setting

Through the Camile App you can set the distance unit as either kilometers or miles.



### 3 Training Plan

Through the Camile App you can set either a time plan or a distance plan.



#### 4 Automatic Backlight

Through the Camile App you can choose to turn on or off the automatic backlight feature (default setting is off). When the automatic backlight is on, the backlight will be come on after sunset (only whilst moving, not stationary). When the automatic backlight is off, a press of any key will turn on the backlight for 30 seconds. We recommend when changing time-zones to recalibrate your devices time.



#### 5 Firmware Upgrades

Through the settings page of the Camile App you can download the latest firmware, and update the device via Bluetooth. The device must restart after a firmware upgrade.



#### 6 Download the Camile App

To get the full Camile R20 experience download the Camile App.

##### 1 Learn more at:

[www.miniwing.com/support](http://www.miniwing.com/support) 

[Download Camile App](#)

[Download Feature Guide](#)

.....

##### 2 Contact us:

[support@miniwing.com](mailto:support@miniwing.com) 

#### 7 Camile Support

If you encounter any problems or require further assistance, please contact Camile support:

[support@miniwing.com](mailto:support@miniwing.com)



## 7 Warning

- ① Do not expose to fire or high heat.
- ② Do not allow contact with water.
- ③ Do not place with sharp objects to avoid screen scratches.
- ④ Do not disassemble.
- ⑤ Use the charger according to public safety regulations.
- ⑥ The suitable temperature for the equipment is  $-10^{\circ}\text{C}$ – $40^{\circ}\text{C}$ .
- ⑦ For your safety, avoid operating the device when cycling.

**CE 0700 RoHS**

**FCC ID:2AHGHR20 IC:21443-R20**



## FCC Statements:

This device complies with part 15 of the FCC rules. Operation is subject to the following two conditions: (1) this device may not cause harmful interference, and (2) this device must accept any interference received, including interference that may cause undesired operation.

CAUTION: Any changes or modifications not expressly approved by the grantee of this device could void the user's authority to operate the equipment.

NOTE: This equipment has been tested and found to comply with the limits for a Class B digital device, pursuant to part 15 of the FCC Rules. These limits are designed to provide reasonable protection against harmful interference in a residential installation. This equipment generates uses and can radiate radio frequency energy and, if not installed and used in accordance with the instructions, may cause harmful interference to radio communications. However, there is no guarantee that interference will not occur in a particular installation. If this equipment does cause harmful interference to radio or television reception, which can be determined by turning the equipment off and on, the user is encouraged to try to correct the interference by one or more of the following measures:

- Reorient or relocate the receiving antenna.
- Increase the separation between the equipment and receiver.
- Connect the equipment into an outlet on a circuit different from that to which the receiver is connected.
- Consult the dealer or an experienced radio/TV technician for help.

**CE 0700**



## FCC Radiation Exposure Statement:

The device has been evaluated to meet general RF exposure requirement, The device can be used in portable exposure condition without restriction.

Due to the used enclosure material, the product shall only be connected to a USB Interface of version 2.0 or higher. The connection to so called power USB is prohibited.

CAUTION: RISK OF EXPLOSION IF BATTERY IS REPLACED BY AN INCORRECT TYPE.  
DISPOSE OF USED BATTERIES ACCORDING TO THE INSTRUCTIONS.

EU Regulatory Conformance:

Hereby, Hangzhou Miniwing Technology Co., Ltd, declares that this device is in compliance with the essential requirements and other relevant provisions of Directive 1999/5/EC.

**CE 0700**

Notice: Observe the national local regulations in the location where the device is to be used.  
This device may be restricted for use in some or all member states of the European Union (EU).

## Canadian regulatory statement

This device complies with Industry Canada licence-exempt RSS standard(s). Operation is subject to the following two conditions: (1) this device may not cause interference, and (2) this device must accept any interference, including interference that may cause undesired operation of the device.

Le présent appareil est conforme aux CNR d'Industrie Canada applicables aux appareils radio exempts de licence. L'exploitation est autorisée aux deux conditions suivantes : (1) l'appareil ne doit pas produire de brouillage; (2) l'appareil doit accepter tout brouillage radioélectrique subi, même si le brouillage est susceptible d'en compromettre le fonctionnement.

This Class B digital apparatus complies with Canadian ICES-003.

Cet appareil numérique de la classe B est conforme à la norme NMB-003 du Canada.

Any changes or modifications not expressly approved by the grantee of this device could void the user's authority to operate the device.

Toute modification non approuvée explicitement par le fournisseur de licence de l'appareil peut entraîner l'annulation du droit de l'utilisateur d'utiliser l'appareil.

Due to the used enclosure material, the product shall only be connected to a USB Interface of version 2.0 or higher. The connection to so called power USB is prohibited. Do not use the mobile phone in the environment at too high or too low temperature, never expose the equipment under strong sunshine or too wet environment.  
The suitable temperature for the product and accessories is -10-40 °C.