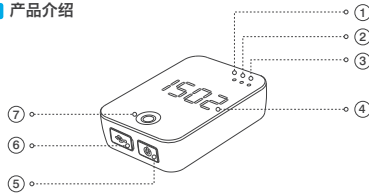


1 产品清单

R100骑行相机*1、专用底座*1、Micro USB数据线*1、R100使用说明书*1。



2 产品介绍



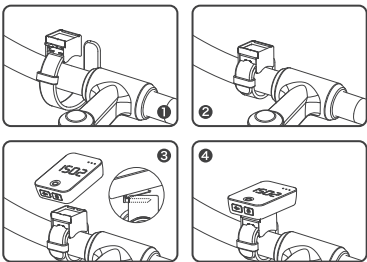
① 【WiFi指示灯】	⑤ 【电源/WiFi】
② 【工作指示灯】	长按 —— 开关机
常亮 —— 录像	短按 —— 开关WiFi
闪烁 —— 连拍	(WiFi用于设置设备和传输数据)
③ 【电量指示灯】	[WiFi名称: camile_xxxxxxxxxx]
常亮 —— 电量充足	密码12345678]
闪烁 —— 电量低于20%或正在充电	⑥ 【Micro USB】
④ 【显示区域】	(USB用于设备充电和传输数据)
显示 —— 速度、时间、里程、	⑦ 【开启录像、连拍/显示切换】
电量(开机时)、来电提醒(显示CALL)、	长按 —— 开启录像、连拍(必须在App中切换)
骑行计划提醒(半程提醒、完成提醒)	短按 —— 切换显示
蓝牙连接	
① 扫描二维码或在iOS、Android商店中下载App，并打开手机蓝牙。	
② 进入App后搜索，配对成功即可进行设备参数设置及来电提醒。	

3 使用场景

本产品可固定在自行车上使用，以生成、显示及存储GPS定位信息，并且可以按照使用者需求，拍摄存储录像或照片。使用者可将这些数据通过USB或WiFi传输给其他数码设备。

4 R100安装及取下

(取下时按照上述步骤倒序进行)



5 App下载

扫描以下二维码获取App:





6 注意事项

- ① 请勿将产品扔进火中或靠近高温物体；
- ② 请使用符合安全规定的充电器进行充电；
- ③ 请勿将产品泡在水中；
- ④ 请勿用锐物触碰产品屏幕，以免造成划伤；
- ⑤ 请勿自行拆卸产品；
- ⑥ 充电时在27度以下使用，电池供电时在38度以下使用。



R100
使用说明书

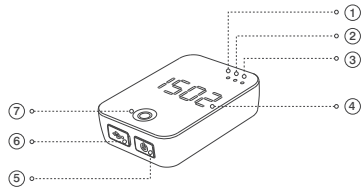
MINIWINING
杭州米为科技有限公司
Tel: 400-960-3766
E-mail: service@miniwing.com
浙江省杭州市西湖区三墩镇金蓬街368号同德科技园

1 Package Contents

Camile R100 Cycling Camera x1, Camile Mount x1, Micro USB Cable x1, Camile R100 Quick-Start Guide x1.



2 Product Guide

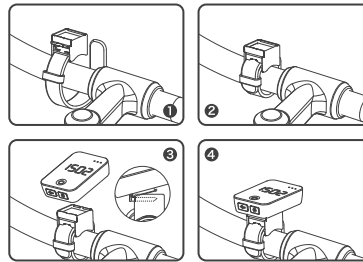


- | | |
|---|---|
| ① [WiFi Indicator] | ⑤ [Power/WiFi Button] |
| ② [REC / Photo Indicator] | Long Press - Power On/Off |
| Constant Light - Video | Single Press - WiFi On/Off |
| Flashing Light - Continuous Shooting | (WiFi Set up and Data Transmission) |
| ③ [Power Indicator] | (WiFi Username: camile_xxxxxxxx) |
| Constant Light - More than 20% power | Password: 12345678) |
| Flashing Light - Less than 20% power /charging | ⑥ [Micro USB Port] |
| ④ [Display] | USB Charging and Data Transmission |
| Displays Speed / Time / Mileage | ⑦ [Starting Video or Continuous Shooting / Display Toggle] |
| Battery Percentage on Power Up | Long Press - Starting Video or |
| Call Alerts | Continuous Shooting (Video or Continuous |
| Cycling Plan Alerts (Halfway and Goal Reached Alerts) | Must be Set Up in App) |
| | Single Press - Display Toggle |
- *Bluetooth Connection***
- ① Download the App by scanning the QR Code, or find in the Android or iOS App Store, then switch on your device bluetooth.
- ② After opening the App, go to Device > Bluetooth, and search for Camile and connect to the device. In "Device" you can change Camile settings.

3 Product Use:

This product is able to be fixed on to a bike using a mount, and collect GPS data in accordance with the users needs, as well as shoot movies or capture photos. The user can then transfer this data to another device using USB or WiFi.

4 Mounting Instructions



5 Download Camile App

Scan the QR Code to download.



MINIWINING
www.miniwing.com

Hangzhou Miniwing Technology Co.,Ltd
Tel: 400-960-3766
E-mail: service@miniwing.com
No.368 Jinpeng Street, SandunTown, Hangzhou, China.



6 Warning:

- ① Do not expose to fire or high heat.

② Do not allow contact with water.

③ Do not place with sharp objects to avoid screen scratches.

④ Do not disassemble.

⑤ Use the charger according to public safety regulations.

⑥ The suitable temperature for the equipment is 0-38°C.
It is recommended to charge the equipment in an environment with a temperature that ranges from 0°C-27°C.



FCC Statements:
This device complies with part 15 of the FCC rules. Operation is subject to the following two conditions: (1) this device may not cause harmful interference, and (2) this device must accept any interference received, including interference that may cause undesired operation.
CAUTION: Any changes or modifications not expressly approved by the grantee of this device could void the user’s authority to operate the equipment.
NOTE: This equipment has been tested and found to comply with the limits for a Class B digital device, pursuant to part 15 of the FCC Rules. These limits are designed to provide reasonable protection against harmful interference in a residential installation. This equipment generates uses and can radiate radio frequency energy and, if not installed and used in accordance with the instructions, may cause harmful interference to radio communications. However, there is no guarantee that interference will not occur in a particular installation. If this equipment does cause harmful interference to radio or television reception, which can be determined by turning the equipment off and on, the user is encouraged to try to correct the interference by one or more of the following measures:
- Reorient or relocate the receiving antenna.
- Increase the separation between the equipment and receiver.
- Connect the equipment into an outlet on a circuit different from that to which thereceiver is connected.
- Consult the dealer or an experienced radio/TV technician for help.

FCC Radiation Exposure Statement:
The SAR limit of USA (FCC) is 1.6 W/kg averaged over one gram of tissue. Device Types One Touch R100 has also been tested against this SAR limit. The highest SAR value reported under this standard during product certification for use when properly worn on the body is 0.189 W/kg.

Due to the used enclosure material, the product shall only be connected to a USB Interface of version 2.0 or higher. The connection to so called power USB is prohibited.
The suitable temperature for the equipment is 0-38°C.It is recommended to charge the equipment in an environment with a temperature that ranges from 0°C-27°C.

CAUTION RISK OF EXPLOSION IF BATTERY IS REPLACED BY AN INCORRECT TYPE. DISPOSE OF USED BATTERIES ACCORDING TO THE INSTRUCTIONS.

EU Regulatory Conformance:
Hereby, Hangzhou Miniwing Technology Co.,Ltd, declares that this device is in compliance with the essential requirements and other relevant provisions of Directive 1999/5/EC.

CE 0700
Notice: Observe the national local regulations in the location where the device is to be used. This device may be restricted for use in some or all member states of the European Union (EU).

R100
Quick-Start Guide