

Appendix B

BLE

Device Under Test Properties

Model	Dimensions [mm]	IMEI
ID208 Plus-H	50.0 x 40.0 x 14.0	

Exposure Conditions

Phantom Section, TSL	Position, Test Distance [mm]	Band	Group, UID	Frequency [MHz], Channel Number	TSL Conductivity [S/m]	TSL Permittivity
Flat, HSL	FRONT, 10.00	ISM 2.4 GHz Band	Bluetooth, 10670-AAA	2480.000, 39	1.78	39.4

Hardware Setup

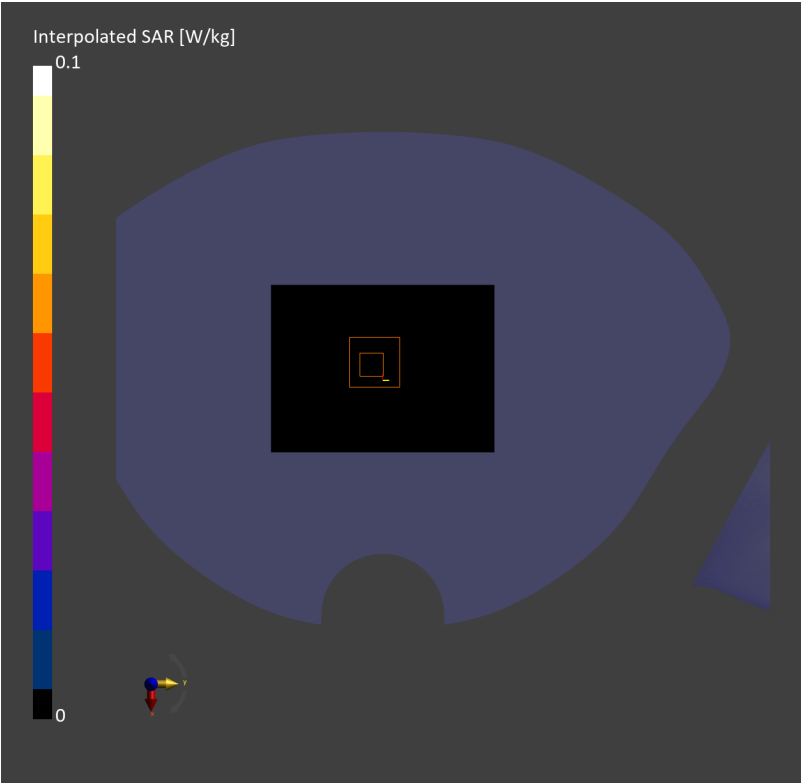
Phantom	TSL	Probe, Calibration Date	DAE, Calibration Date
Twin-SAM V8.0 (30deg probe tilt) – 2168	HSL2450	EX3DV4 – SN7812, 2024-06-25	DAE4ip Sn1846, 2024-12-10

Scans Setup

	Area Scan	Zoom Scan
Grid Extents [mm]	72.0 x 96.0	30.0 x 30.0 x 30.0
Grid Steps [mm]	12.0 x 12.0	5.0 x 5.0 x 5.0
Sensor Surface [mm]	3.0	1.4
Graded Grid	N/A	Yes
Grading Ratio	N/A	1.5
MAIA	Y	Y
Surface Detection	Unknown method	All points
Scan Method	Measured	Measured

Measurement Results

	Area Scan	Zoom Scan
Date	2025-01-17, 11:29	2025-01-17, 11:38
psSAR1g [W/Kg]	0.004	0.003
psSAR10g [W/Kg]	0.002	0.002
Power Drift [dB]	0.09	-0.06
Power Scaling	Disabled	Disabled
Scaling Factor [dB]		
TSL Correction	No correction	No correction
M2/M1 [%]		35.4
Dist 3dB Peak [mm]		9.0



Device Under Test Properties

Model	Dimensions [mm]	IMEI
ID208 Plus-H	50.0 x 40.0 x 14.0	

Exposure Conditions

Phantom Section, TSL	Position, Test Distance [mm]	Band	Group, UID	Frequency [MHz], Channel Number	TSL Conductivity [S/m]	TSL Permittivity
Flat, HSL	BACK, 0.00	ISM 2.4 GHz Band	Bluetooth, 10670-AAA	2480.000, 39	1.78	39.4

Hardware Setup

Phantom	TSL	Probe, Calibration Date	DAE, Calibration Date
Twin-SAM V8.0 (30deg probe tilt) – 2168	HSL2450	EX3DV4 – SN7812, 2024-06-25	DAE4ip Sn1846, 2024-12-10

Scans Setup

	Area Scan	Zoom Scan
Grid Extents [mm]	72.0 x 96.0	30.0 x 30.0 x 30.0
Grid Steps [mm]	12.0 x 12.0	5.0 x 5.0 x 5.0
Sensor Surface [mm]	3.0	1.4
Graded Grid	N/A	Yes
Grading Ratio	N/A	1.5
MAIA	Y	Y
Surface Detection	All points	All points
Scan Method	Measured	Measured

Measurement Results

	Area Scan	Zoom Scan
Date	2025-01-17, 11:00	2025-01-17, 12:31
psSAR1g [W/Kg]	0.008	0.011
psSAR10g [W/Kg]	0.003	0.003
Power Drift [dB]	0.01	0.01
Power Scaling	Disabled	Disabled
Scaling Factor [dB]		
TSL Correction	No correction	No correction
M2/M1 [%]		41.8
Dist 3dB Peak [mm]		5.4

