

CONTACT US

For questions, troubleshooting and assistance, contact

support@soneter.com

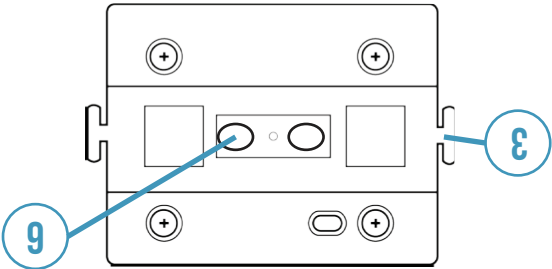
SMARTFLOWH2O INSTALL GUIDE

Welcome to your Smart Home Water System
A new way to conserve and protect



METER FEATURES

UNDERSIDE OF METER



6 SENSORS

Indicates pipe calibration status or if there is proper signal through the pipe. Indicates wireless connectivity and pairing status and events.

5 BLUE LED

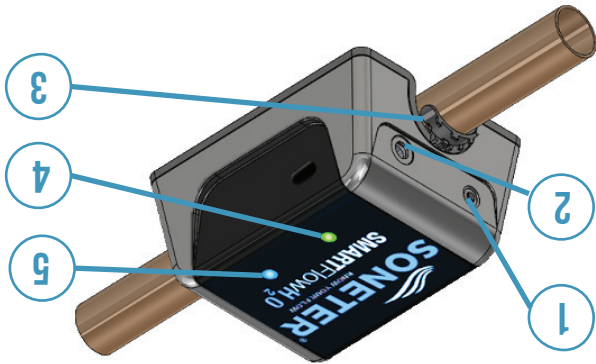
4 GREEN LED

Allows ultrasonic signals to enter the pipe.

MEET YOUR SMART WATER METER

LEARN. MONITOR. PROTECT.

Know your water like never before.



1 PUSH BUTTON

Used for pipe calibration or restoring factory settings.

2 POWER CONNECTOR

Accepts the included AC power cord to provide power to the meter.

3 ZIP TIE CHANNELS

Guides the zip ties that are used to secure the meter on the pipe.

INSTALL MATERIALS

POWER SUPPLY

Your meter must be installed where an outlet is accessible either directly or via extension cord (not included).



GREASE APPLICATOR

Grease allows the ultrasonic signal to pass through the pipe. If there is too little or too much grease covering the sensors, no readings will occur. Use as directed.



SKIN CONTACT Wash your hands thoroughly after completing the installation. You may want to keep some paper towels nearby while installing the monitor.

ZIP TIES

Use two zip ties to secure the monitor to the pipe via the Zip Tie Channels. The zip ties must be as tight as possible; loose zip ties will cause the signal to be weak.



EMERY CLOTH

Removes dirt, dust and particles from the pipe. You can determine your pipe size by wrapping the cloth end to end around the pipe; if it touches then the pipe is 3/4", if not then it is 1".



1. WI-FI CONNECTION

Setup using an iPhone or iPad is not yet supported, for best experience please either use a PC, Mac computer, or Anroid phone to connect to Wi-Fi. After Wi-Fi is connected, you will be able to log in to your account with any device.

1 CONNECT TO METER

Plug in your meter to any standard wall outlet that is close to your wireless router. The blue LED will be solid. If not, push the button 5 times in less than 5 seconds. On a computer or mobile device, open Wi-Fi settings and connect to the network named "Soneter_XXXX" where the X's are replaced by the 4 characters below.

Soneter_ _ _ _ _

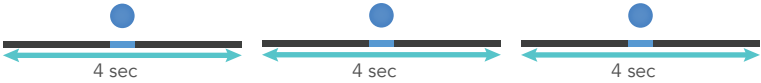
If the network doesn't appear, move closer to the meter or press the push button 5 times in less than 5 seconds. The unit will reset and the blue LED will become solid. The network should now appear.

2 CONNECT METER TO HOME WI-FI

When connected to the Soneter network, open a browser page. Enter the URL http://10.10.100.254. Fill in your network SSID and Password, and click Connect.

When you see a message saying "rebooting", close this page and rejoin your home Wi-Fi network. The blue LED will flash intermittently for about a minute. When continually single flashing, the meter is connected. *If it is continually double flashing after a minute, press the push button 5 times in under 5 seconds. The blue LED will become solid and reset its network. Repeat steps 1 and 2.*

Single flash pattern - Wireless connection is functioning normally



3 LOG IN TO ACCOUNT GO TO: WWW.DASHBOARD.SONETER.NET

User Name:

Password:

2. INSTALL LOCATION

1 CHOOSE LOCATION ON PIPE

Find your main water shutoff valve. Look for a spot near the shutoff valve that has at least 5 inches of straight exposed pipe. The meter does not need to be immediately adjacent to the shutoff valve.

The location should be on the main water line before it branches off to outdoor, your water heater, ect. The meter works on 3/4" and 1" copper and cpvc pipe. Wait until step 3 to install the meter, but place it on the chosen pipe to ensure it fits and the sensors can contact the pipe surface.

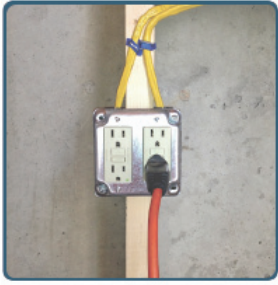


2 PLUG IN & VERIFY WI-FI

The selected location must allow the meter to plug in to a standard wall outlet. You may need an extension cord.

Plug in the meter. The blue LED will flash intermittently for about a minute after plugging in. When it is continuously single flashing, it is connected.

If the blue LED is continuously double flashing after a minute or so, you may need to move closer to your router or away from obstacles. (HVAC ducts, ect.)

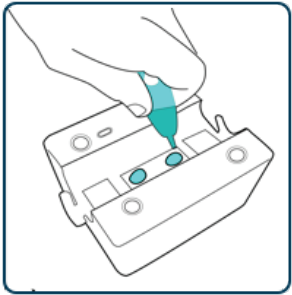


3. INSTALL METER



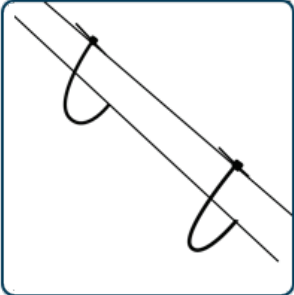
1. CLEAN PIPE

Use the included emery cloth to remove dust, paint or other particles.



2. APPLY GREASE

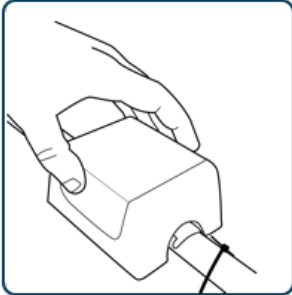
Using half of the tube, apply dime-sized drops of grease to the specified sensor areas on the back of the meter.



3. SET ZIP TIES

Loosely fasten two zip ties around the pipe. This will help make securing the meter easier.

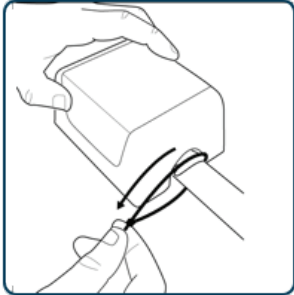
WARNING Only use the included grease tube to install the meter. Do not use any other substance, or the pipe material may be affected. There is enough grease in the included tube is for two applications.



4. MOUNT METER

Press the meter onto the pipe between the two zip ties.

Be very careful not to twist or slide the meter as this may displace the grease.



5. SECURE ZIP TIES

Without shifting the meter, move the zip ties over the tabs.

Hold the meter against the pipe and tighten the zip ties over the tabs so they are as tight as possible.

4. CALIBRATION

When the green LED is double-flashing, this means it is ready for calibration.



If it is still single-flashing, the signal is not strong enough to pass through the pipe. Cut off the zip ties, use a paper towel to wipe the grease off the pipe and bottom of the meter. Repeat steps 1 - 5 in Section 3, making sure the grease is applied properly and zip ties are fully tightened.

1 RUN SET ZERO

Turn off your main water shutoff valve, or be sure there is absolutely no water running. Once there is no water flowing, hold down the **push button** for 5-8 seconds to run a set zero. The green LED will blink rapidly for about 30 seconds during this process. When successful, it will proceed to a triple flash.

If the green LED continues double flashing, be sure there is no water flow in the pipe and repeat the set zero process. Continue until triple flash.

2 SET FLOW DIRECTION

When the set zero is complete, the green LED will triple flash. Turn your main water shutoff valve back on and run any water fixture for a few seconds. This allows the meter to know which way the water is flowing.

After flushing a toilet or running a sink, the green LED should become solid, indicating the meter has completed the setup process. *If the green LED is still triple flashing, the meter may not be installed on the main water line.*

You should now be able to log in to your account and verify you are able to see live water flow.