

US Tech Test Report:  
FCC ID:  
IC:  
Test Report Number:  
Issue Date:  
Customer:  
Model:

FCC Part 15/IC RSS Certification  
2AHFE-UFCV1000  
21143-UFCV1000  
19-0040  
March 18, 2019  
Reliance Worldwide Corporation  
UFCV-1000

## INTERNAL PHOTOGRAPHS

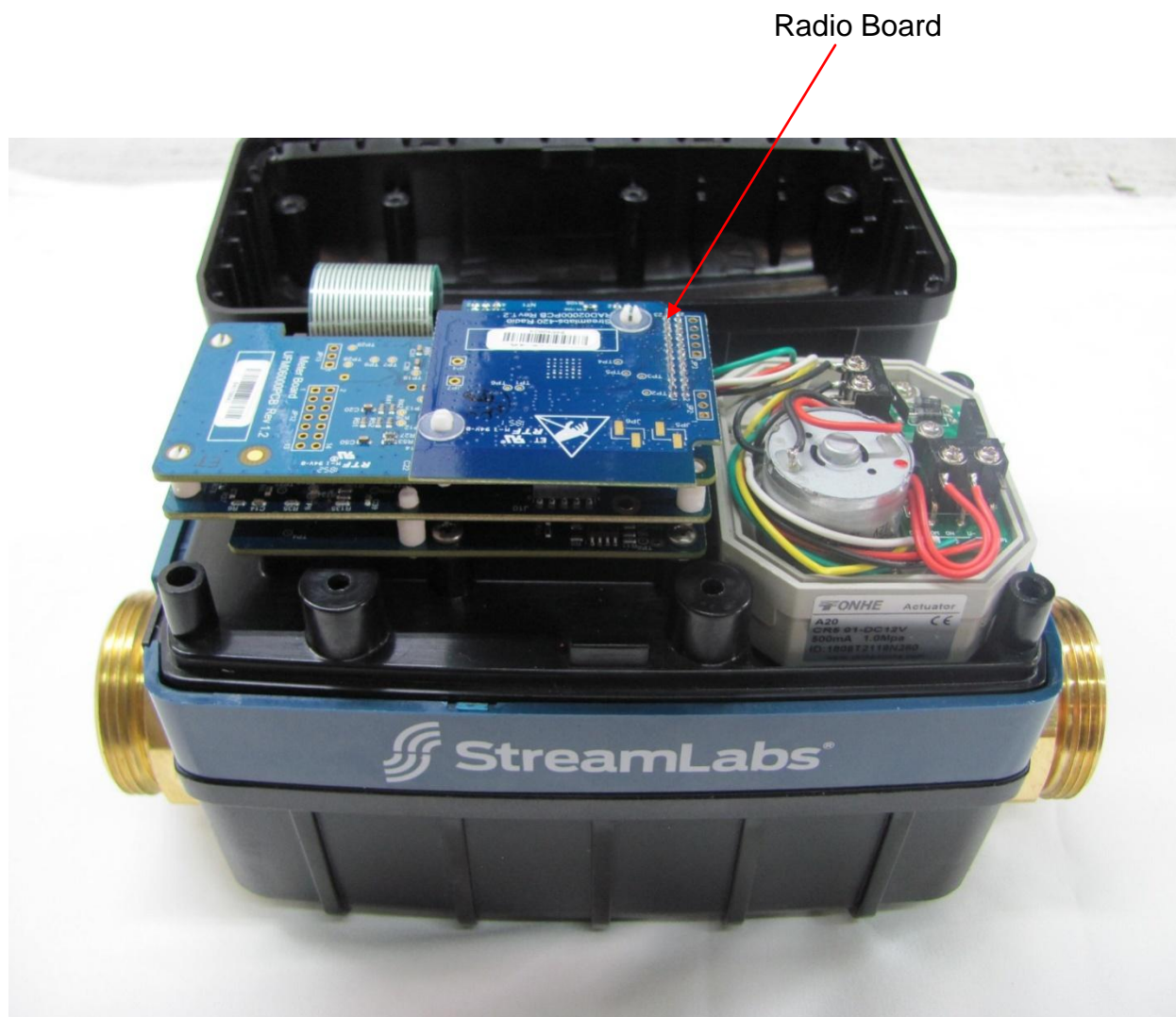


Figure 1. EUT, Inside Enclosure

US Tech Test Report:  
FCC ID:  
IC:  
Test Report Number:  
Issue Date:  
Customer:  
Model:

FCC Part 15/IC RSS Certification  
2AHFE-UFCV1000  
21143-UFCV1000  
19-0040  
March 18, 2019  
Reliance Worldwide Corporation  
UFCV-1000

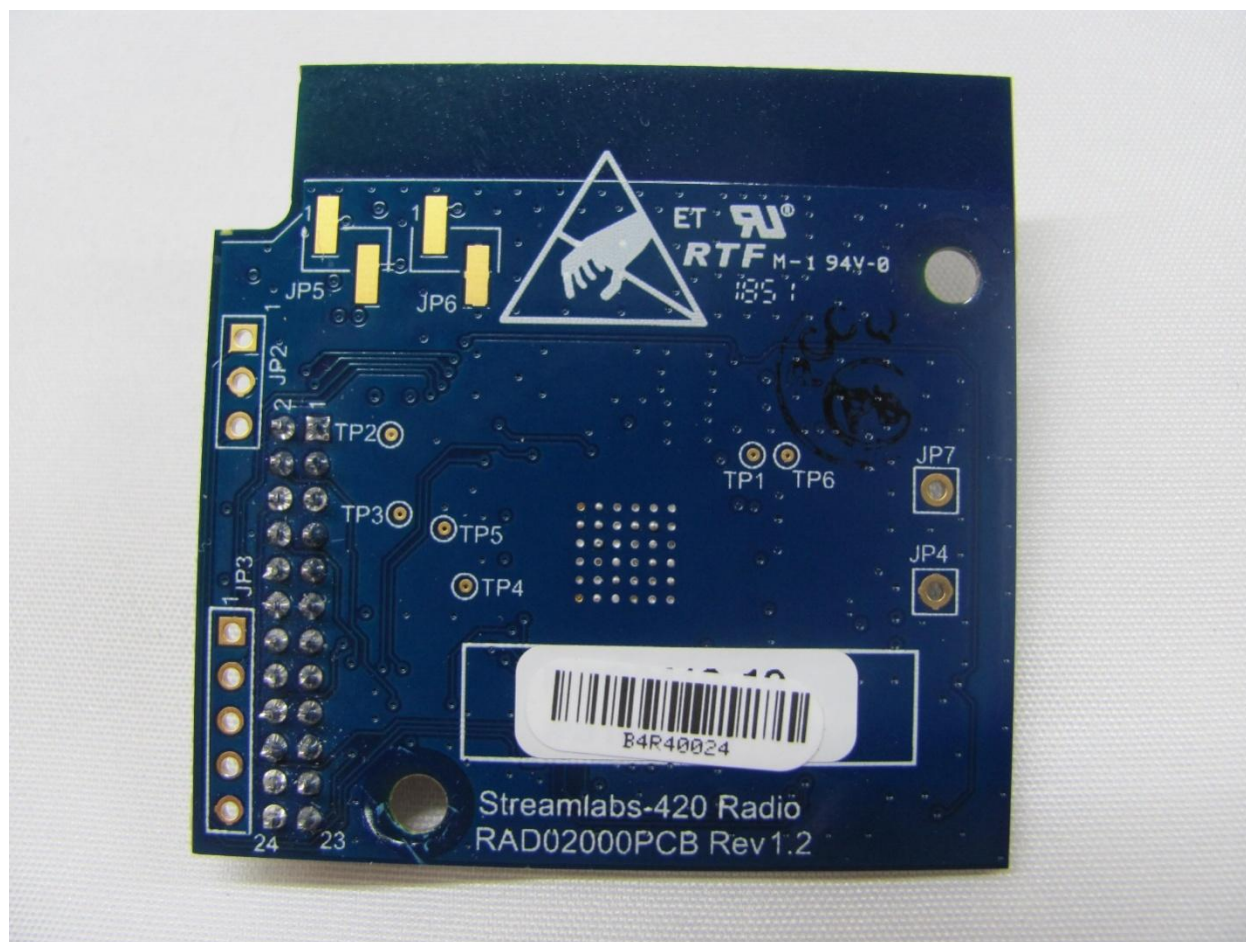


Figure 2. Radio PCB, Top View

US Tech Test Report:  
FCC ID:  
IC:  
Test Report Number:  
Issue Date:  
Customer:  
Model:

FCC Part 15/IC RSS Certification  
2AHFE-UFCV1000  
21143-UFCV1000  
19-0040  
March 18, 2019  
Reliance Worldwide Corporation  
UFCV-1000



Figure 3. Radio PCB, Bottom View



US Tech Test Report:  
FCC ID:  
IC:  
Test Report Number:  
Issue Date:  
Customer:  
Model:

FCC Part 15/IC RSS Certification  
2AHFE-UFCV1000  
21143-UFCV1000  
19-0040  
March 18, 2019  
Reliance Worldwide Corporation  
UFCV-1000

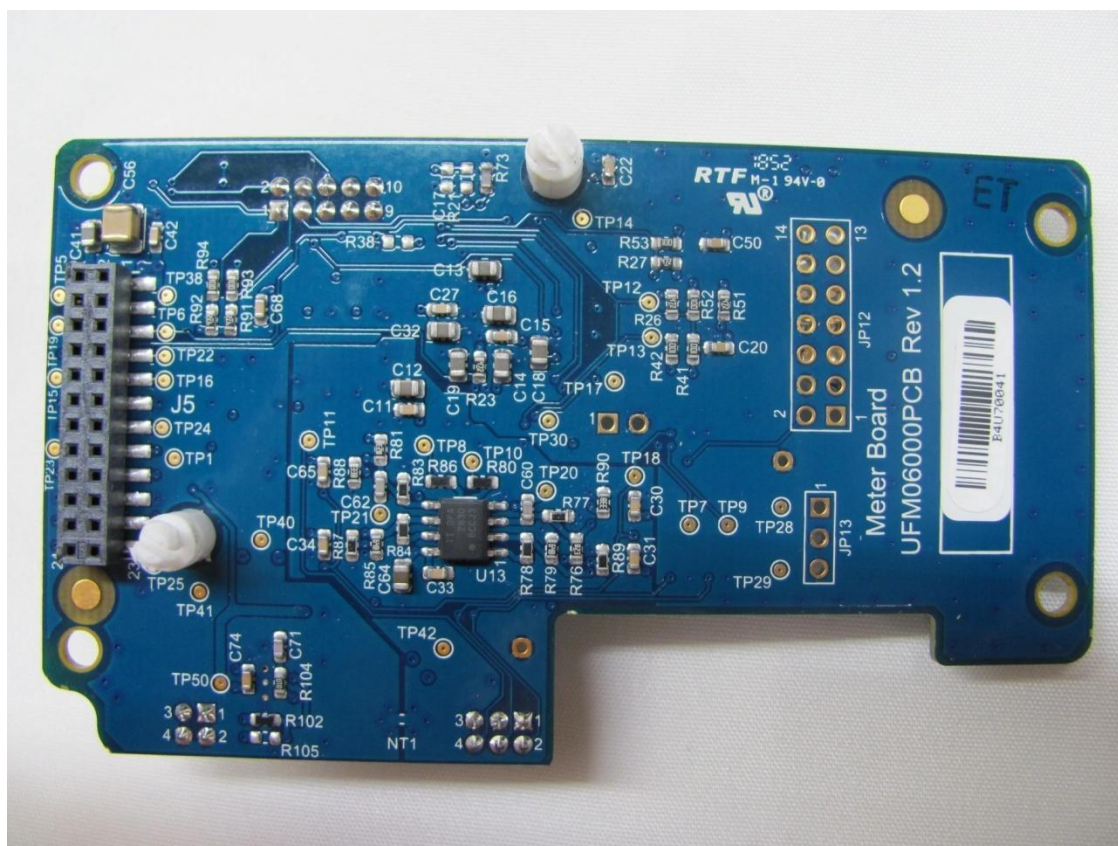


Figure 4. Meter Board, Top View

US Tech Test Report:  
FCC ID:  
IC:  
Test Report Number:  
Issue Date:  
Customer:  
Model:

FCC Part 15/IC RSS Certification  
2AHFE-UFCV1000  
21143-UFCV1000  
19-0040  
March 18, 2019  
Reliance Worldwide Corporation  
UFCV-1000

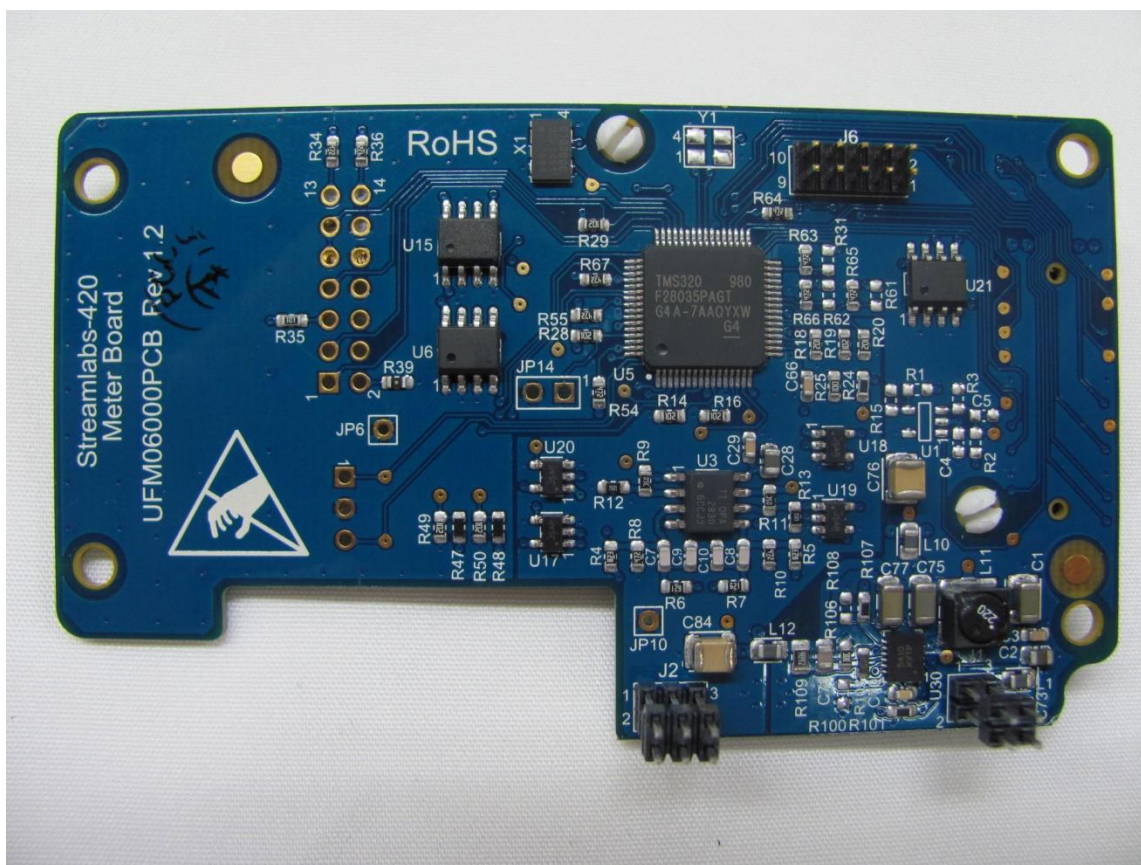


Figure 5. Meter Board, Bottom View

FCC Part 15/IC RSS Certification  
2AHFE-UFCV1000  
21143-UFCV1000  
19-0040  
March 18, 2019  
Reliance Worldwide Corporation  
UFCV-1000





US Tech Test Report:  
FCC ID:  
IC:  
Test Report Number:  
Issue Date:  
Customer:  
Model:

FCC Part 15/IC RSS Certification  
2AHFE-UFCV1000  
21143-UFCV1000  
19-0040  
March 18, 2019  
Reliance Worldwide Corporation  
UFCV-1000

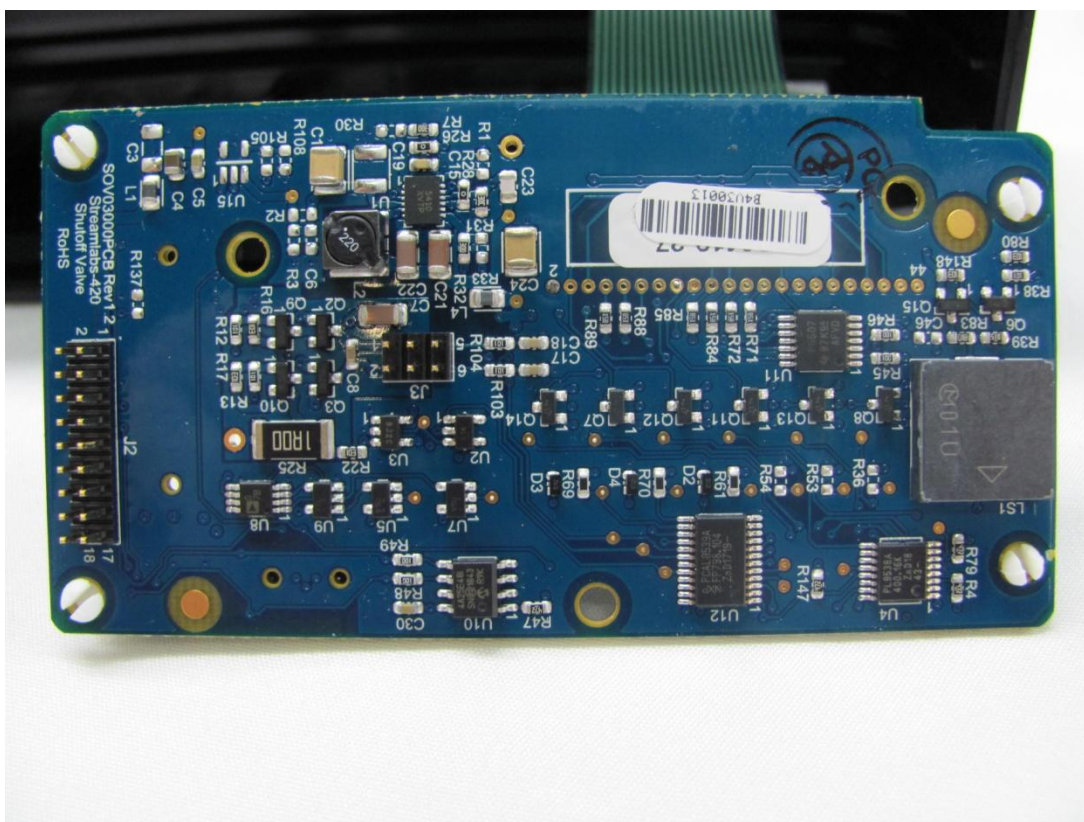


Figure 7. Shutoff Valve Board, Bottom View

US Tech Test Report:  
FCC ID:  
IC:  
Test Report Number:  
Issue Date:  
Customer:  
Model:

FCC Part 15/IC RSS Certification  
2AHFE-UFCV1000  
21143-UFCV1000  
19-0040  
March 18, 2019  
Reliance Worldwide Corporation  
UFCV-1000

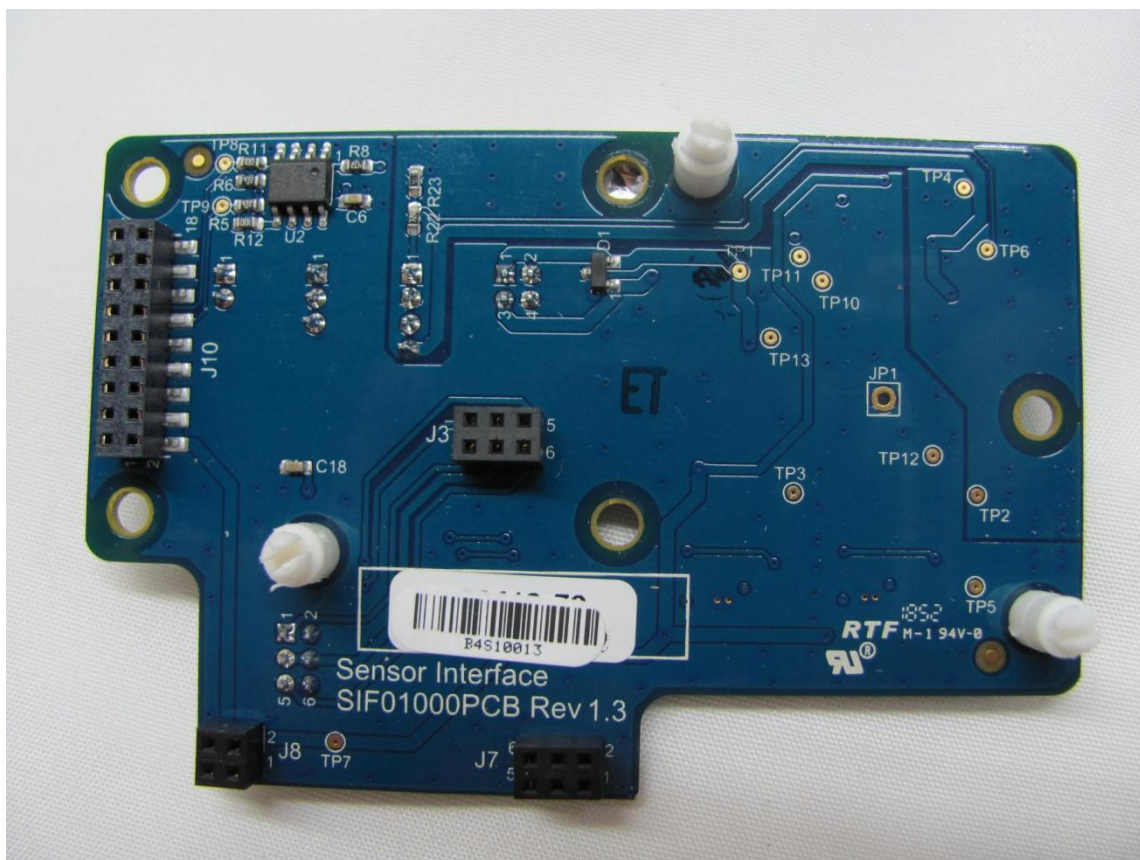
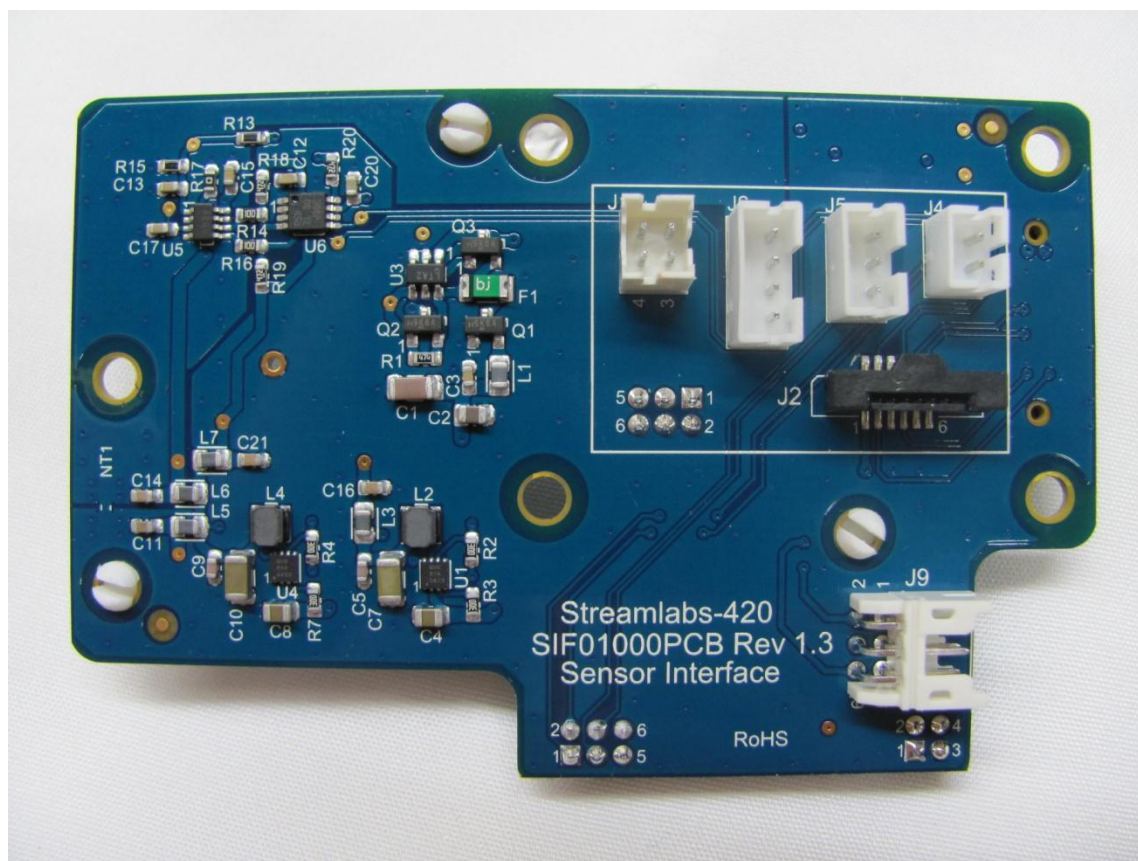


Figure 8. Sensor Interface Board, Top View



US Tech Test Report:  
FCC ID:  
IC:  
Test Report Number:  
Issue Date:  
Customer:  
Model:

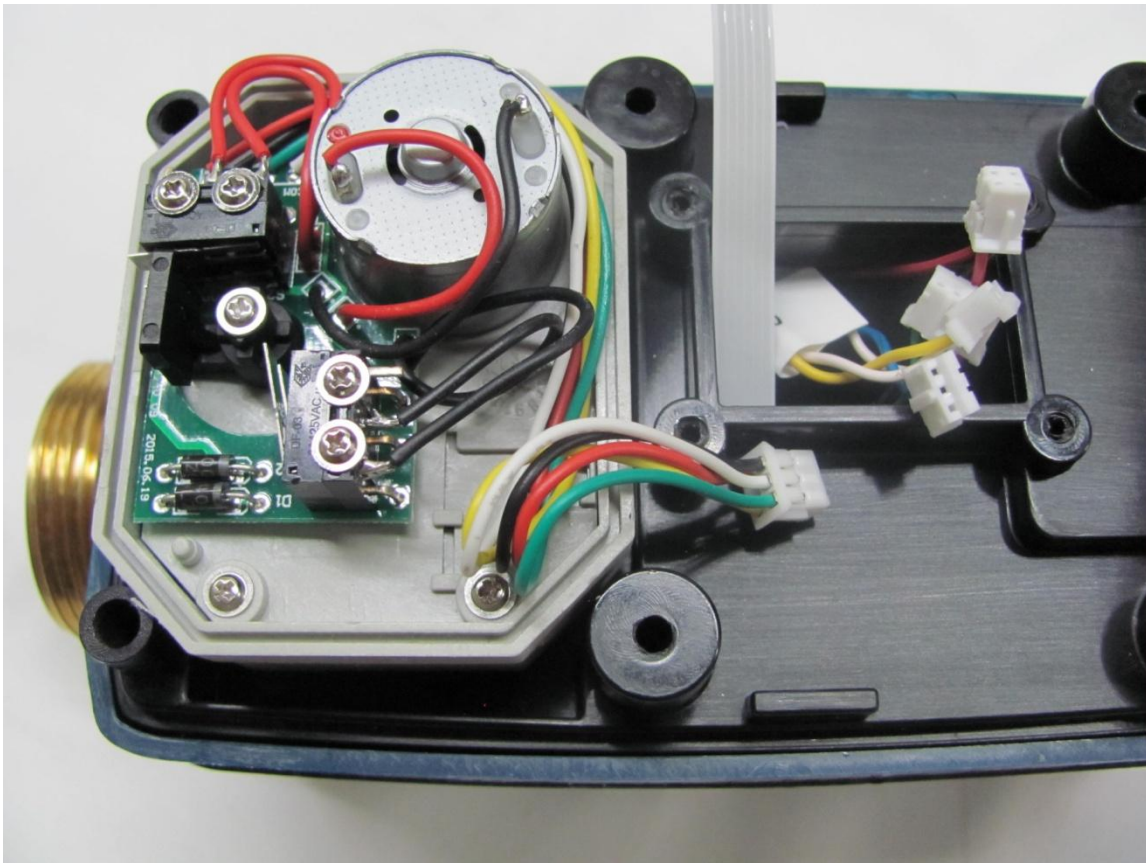
FCC Part 15/IC RSS Certification  
2AHFE-UFCV1000  
21143-UFCV1000  
19-0040  
March 18, 2019  
Reliance Worldwide Corporation  
UFCV-1000



**Figure 9. Sensor Interface Board, Bottom View**

US Tech Test Report:  
FCC ID:  
IC:  
Test Report Number:  
Issue Date:  
Customer:  
Model:

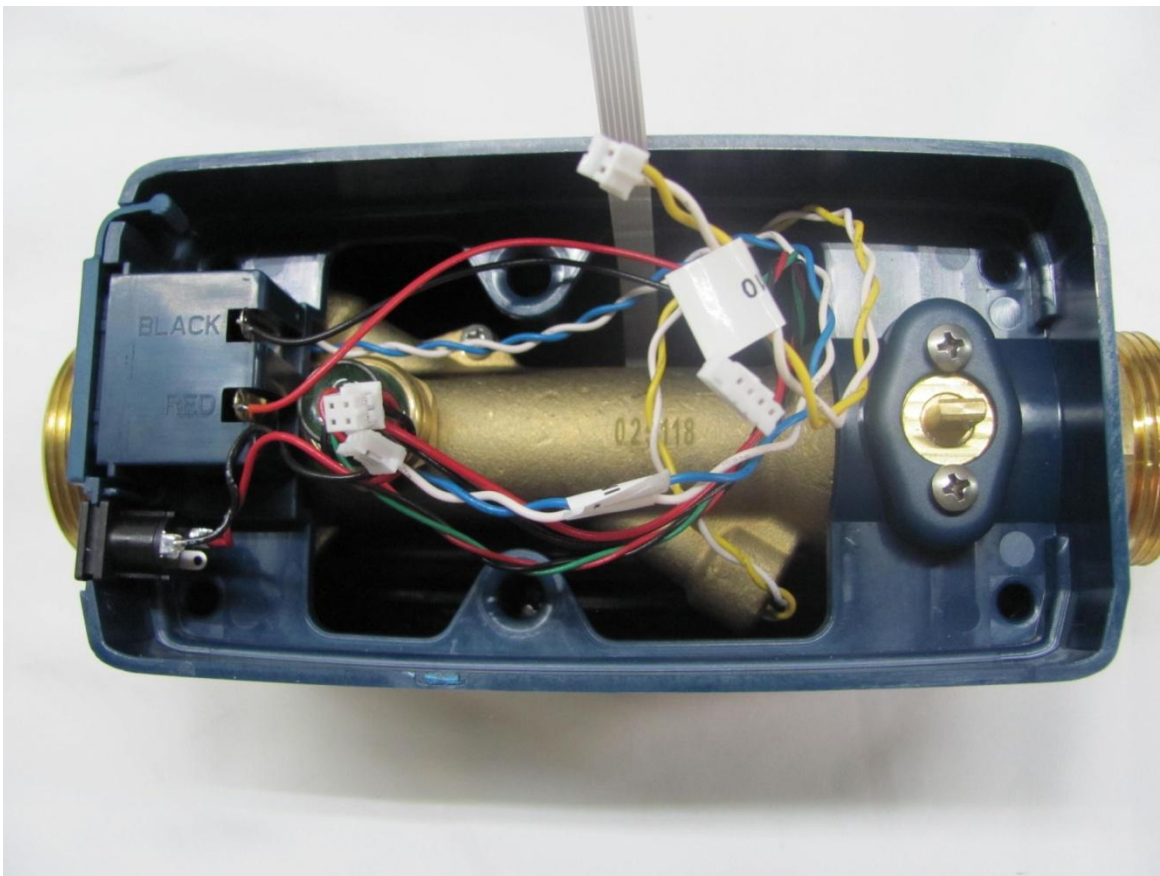
FCC Part 15/IC RSS Certification  
2AHFE-UFCV1000  
21143-UFCV1000  
19-0040  
March 18, 2019  
Reliance Worldwide Corporation  
UFCV-1000



**Figure 10. Internal Wiring 1**

US Tech Test Report:  
FCC ID:  
IC:  
Test Report Number:  
Issue Date:  
Customer:  
Model:

FCC Part 15/IC RSS Certification  
2AHFE-UFCV1000  
21143-UFCV1000  
19-0040  
March 18, 2019  
Reliance Worldwide Corporation  
UFCV-1000

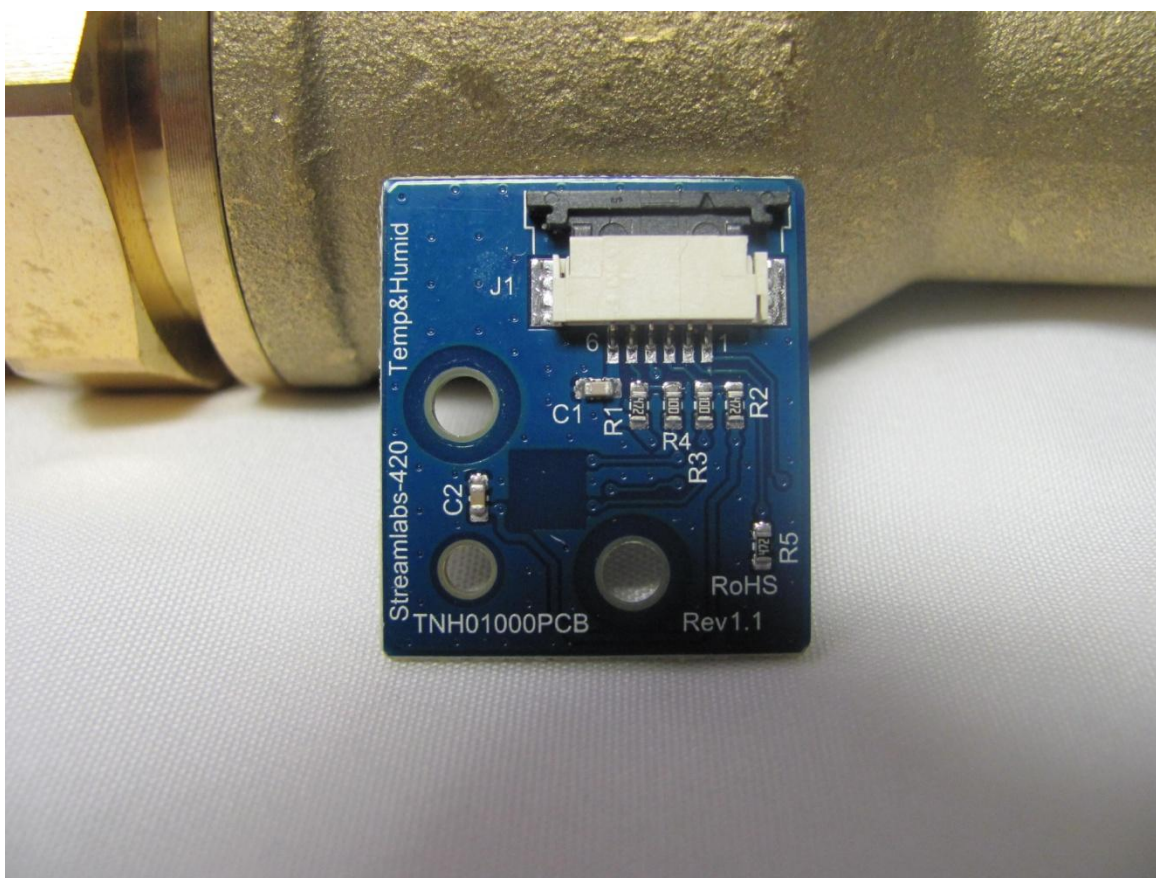


**Figure 11. Internal Wiring 2**



US Tech Test Report:  
FCC ID:  
IC:  
Test Report Number:  
Issue Date:  
Customer:  
Model:

FCC Part 15/IC RSS Certification  
2AHFE-UFCV1000  
21143-UFCV1000  
19-0040  
March 18, 2019  
Reliance Worldwide Corporation  
UFCV-1000

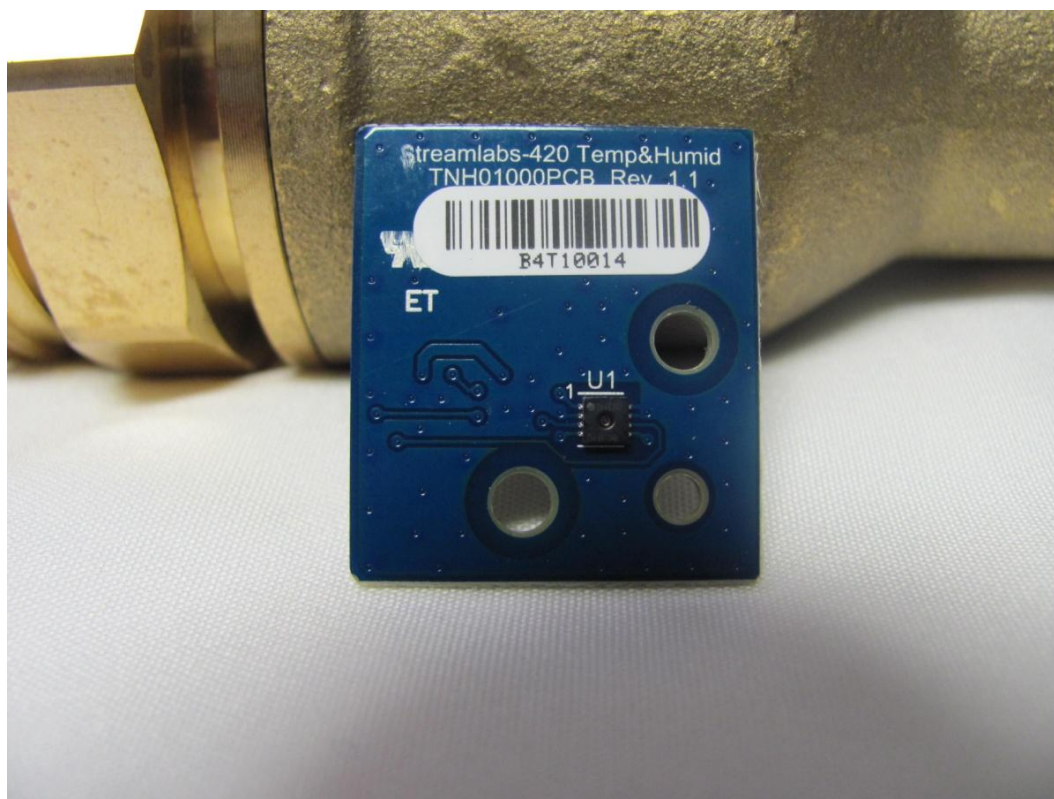


**Figure 12. Temperature and Humidity Sensor Board, Top View**

US Tech Test Report:  
FCC ID:  
IC:  
Test Report Number:  
Issue Date:  
Customer:  
Model:

FCC Part 15/IC RSS Certification  
2AHFE-UFCV1000  
21143-UFCV1000  
19-0040  
March 18, 2019  
Reliance Worldwide Corporation  
UFCV-1000

---



**Figure 13. Temperature and Humidity Sensor Board, Bottom View**