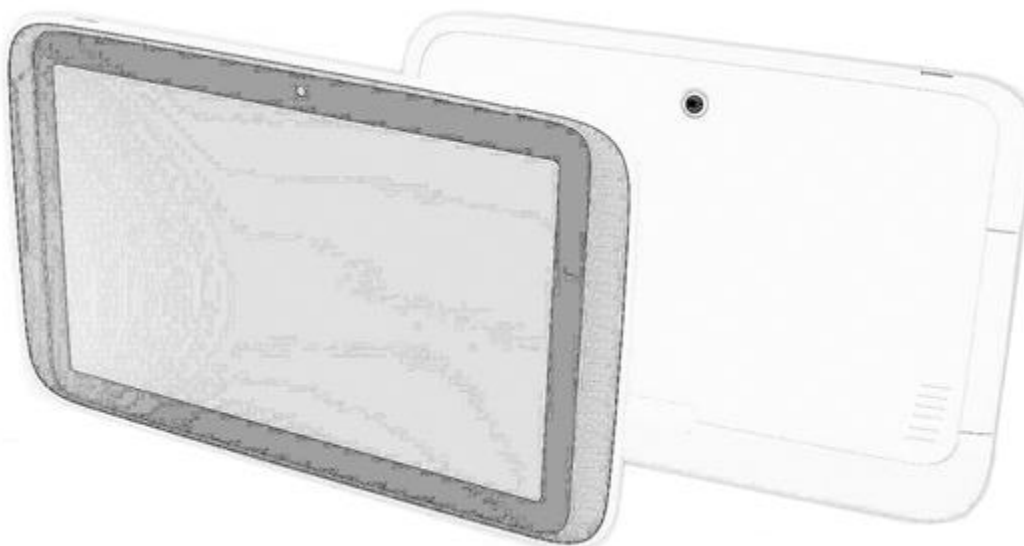


COMPUMAX



***Tablet Blue TW10PRO
Series***

Regulations Information

• CE compliance

This device is classed as a technical information equipment (ITE) in class B and is intended for use in living room and office. approves the conformity by the EU-guidelines:

- EMC Directive 2004/108/EC,
- Low Voltage Directive 2006/95/EC,
- R&TTE Directive 1999/5/EC

• PREVENTION OF HEARING LOSS

Listening to music at high volume levels and for extended durations can damage one's hearing. In order to reduce the risk of damage to hearing, one should lower the volume to a safe, comfortable level, and reduce the amount of time listening at high levels. Headsets should comply with EN 50332-2 requirements.



CAUTION: Any changes or modifications not expressly approved by the guarantee of this device could void the user's authority to operate the equipment.



CAUTION: Ambient temperature of more than 35°C~40°C or less than 5°C

Safety Instructions

- 1-** Do not apply heavy pressure to the tablet or subject it to any form of strong impact as this can damage the tablet's components or otherwise cause it to malfunction.
- 2-** Never cover or block the air vents including those located at the base of the tablet. Never cover your tablet or AC adaptor with any object.
- 3-** To keep your tablet in prime operating condition, protect your work area from direct sunlight.
- 4-** Do NOT expose to or use near liquid, rain, or moisture. Do NOT use the modem during electrical storms.
- 5-** Do not use or expose this device around magnetic fields as magnetic interference may affect the performance of the device.



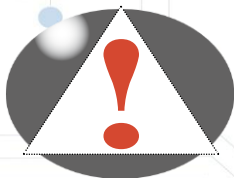
CAUTION: RISK OF EXPLOSION IF BATTERY IS REPLACED BY AN INCORRECT TYPE DISPOSE OF USED BATTERIES ACCORDING TO THE INSTRUCTIONS.

Replace only with the same or equivalent type recommended by the manufacturer.



Dispose of used batteries according to the manufacturer's instructions.

Conventions for this Manual



CAUTION : This message contains important information that must be followed for safe operation.



NOTE: This message contains information for special situations.

Getting to know the basics

Product Specification

This User's Manual provides technical information of instructions and illustrations on how to operate this device for the customer. Please read this manual carefully before using this Pad.

System Specification

- Physical Outline

263,02mm x 177,73mm x 12.45mm

- Weight

695g (w/o) 715g (w)

CPU

- Support Processor

Cherry Trail CR Z8300

Memory

- DDR3L

DDR3L memories

Storage

- Follow AVL

EMMC 32GB/64GB

I/O Port

DC-in (2.5mm)	x 1
USB3.0	
Audio (3.5mm)	x 1 x 1 x 1
Card Reader	(Micro SD) x 1
HDMI	(Micro HDMI)
Home key	back to home page

Audio

- Audio Codec

I2S interface, D3 mode support

- Speaker/MIC

Build-in two speakers
Digital Microphone support
Speaker: 1.5W * 2

Display

- Panel Type

10"LED,800*1280

- Panel Type

IPS: 2.6mm(Max)

Communication Port

- Wireless LAN

IEEE 802.11 b/g/n + Bluetooth v4.0

Webcam

- CCD

-
- Front 1.9M + Rear 5M

Power

- AC Adapter

- Automatics Voltage adjustment between 100 and 240VAC
50/60Hz,
- 5V/2A, 10 Watts, 2Pin US

- Battery

Li-ion Battery

Optional

- Stylus
- Macro-lens (For rear camera)
- Battery (1S2P, 3.8V, 7500mah, 28.50W)
- Wireless (IEEE 802.11 b/g/n + Bluetooth v4.0)
- GPS (BCM4752 (GPS)
- CCD (Front 1.9M + Rear 5M)
- Thermal Probe (For Temperature Sensor)
- Sensor (G-Sensor+E-compass+Light-sensor+GYRO)

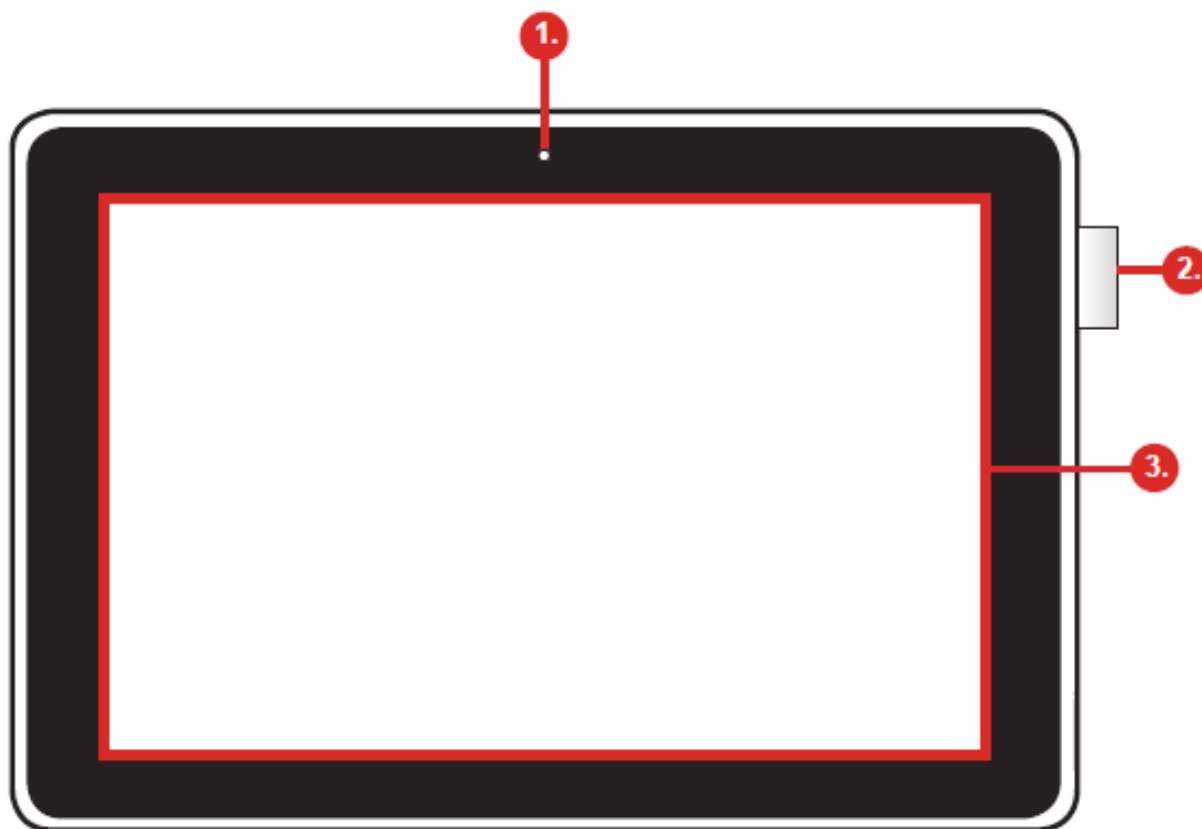
Product Overview

Please become familiar with each component before you operate the Tablet Blue TW10Pro.

Tablet Part



NOTE: The product's color, I/O port, indicator location, and specification will depend upon the actually shipping product.



1- Front Camera (1.9 Mpx)

A device that allows you to record video or take photographs with your Tablet.

2- Pen Cap

To hang the Stylus pen.

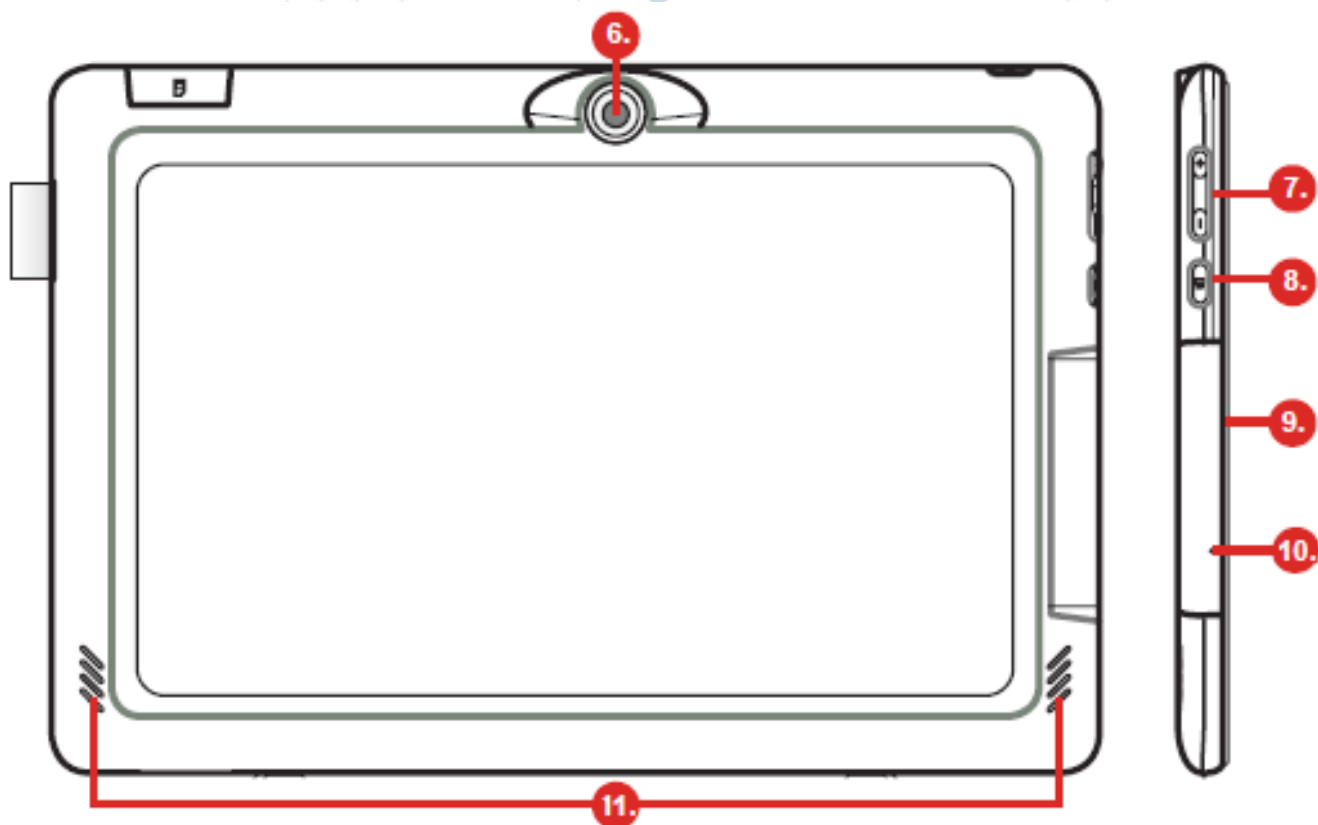
3- LCD Screen

Displays of your tablet.



4- Power Button

Press this button to turn the computer's power on or off.



5- Back Camera.

A device that allows you to record video or take photographs with your computer.

6- Volume Button.

Press the - volume button to decrease volume or the + to increase volume.

7- Windows Button

Press once to open the Start menu.

8- I/O Door

The door covers the I/O ports inside.

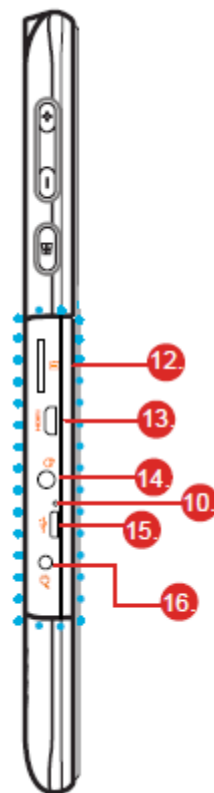
9 - Microphone

Built-in microphone.

10- Stereo speakers

Produce stereo sound.

- 11-** Micro SD Card
Insert a microSD card into this slot.
- 12-** Micro HDMI
Supports high-definition digital video connections.
- 13-** Audio jack
Connects to audio devices.
- 14-** Micro USB 3.0(type B)
Connects to USB devices. A Micro USB to USB adapter is needed to connect to USB devices.
- 15-** DC in jack
Connects the AC adapter into this connector.



CAUTION: Do not put the Tablet on your LAP or other Parts of the body to avoid injury from the heat.

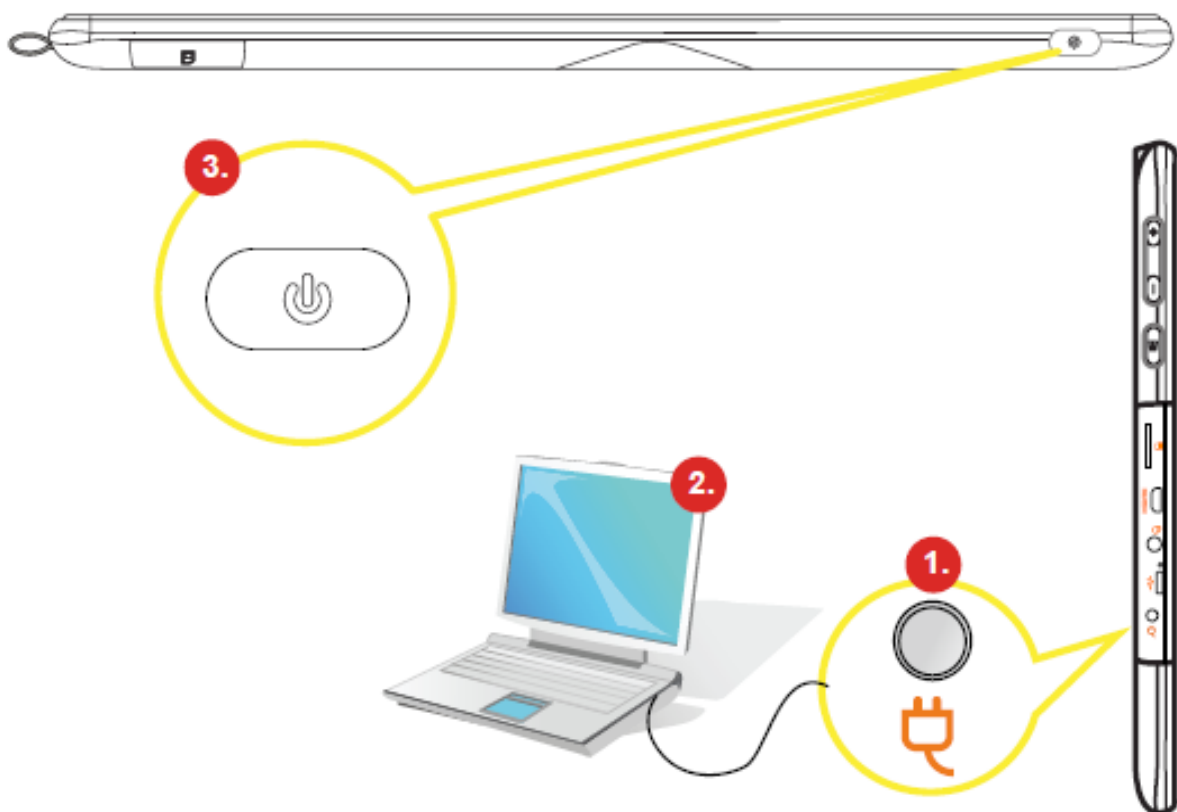
The embedded battery can neither be taken down nor be replaced.

Getting started

Preparing your CMPC

Note that the DC in adapter included in the package is approved for your CMPC; using other adapter may damage either the CMPC or other devices attached to it.

1. Plug the DC in adapter into the DC in port of your Blue TW10pro.
2. Start charging the battery.
(For first-time use, you need to turn your Blue TW10pro off and charge it for 6 hours. After that you can recharge the battery as needed.)
3. Power on: Press the power button to turn on your Blue TW10pro.



When power on mode:

- Sleep mode: Briefly press the power button to turn off the display and switch to Sleep mode.
- Waking up from Sleep mode: To wake up the Blue TW10pro from sleep mode, press the power button again. You'll need to unlock the screen.
- Power off: Long press the power button and hold it until a menu appears on the screen.



CAUTION: Do not use inferior extension cords as this may result in damage to your Blue TW10pro. If the Blue TW10pro comes with its own AC adapter, do not use a different adapter to power the tablet and other electrical devices.

How to insert/remove the Micro SD card

Inserting the micro SD card:

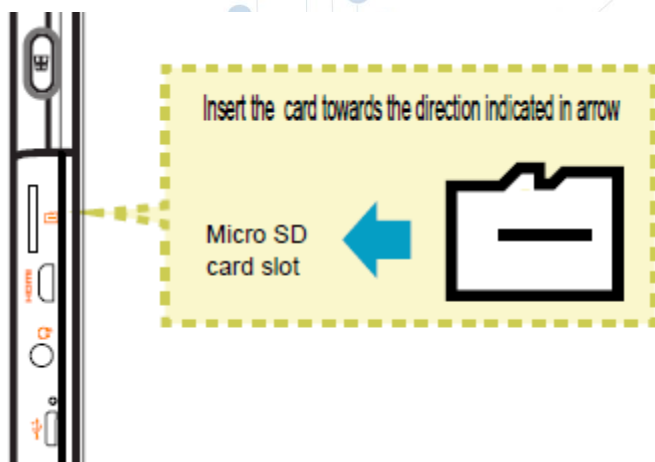
1. Insert the Micro SD card into the Micro SD card slot, pushing gently until it clicks into place.
2. Wait for Blue TW10pro to recognize the Micro SD card.



CAUTION: To prevent damage to information stored on the memory card, unmount the card before removing it from the device.

Removing the Micro SD card:

1. Push the Micro SD card in to eject it from its slot.
2. Slide the Micro SD card out from its slot.



Cleaning the screen

Follow these rules for cleaning the outside and handling your screen on the computer:

- 1- Turn off the system and disconnect all cables.
- 2- Use a damp, or cleaning cloth, soft, lint-free cloth with gentle water only and gently wipe the screen surface.
- 3- Do not spray liquid directly on the screen.

ENERGY SAVER MODES



This section contains information about computer power system, including the AC Adapter, the battery system, recharging the battery, and tips for conserving battery power.

The feed system consists of two parts, the AC Adapter and the battery system. The AC Adapter converts AC power from a wall outlet to the DC power required by the computer.

Currently, virtually all Tablets incorporate a power-saving mode. To achieve the reduction of energy consumption in tablets, we have established two

operation modes, Sleep and Standby, which must be incorporated as required practices in public offices. Then these concepts defined.

Standby Mode Standby.

The system automatically enters this mode after a period of inactivity, which is set in the dialog box Power System. In standby mode, hardware devices, such as display panel and hard disk, are turned off to conserve power.

Inactivity.

Defined as the time period in which the computer or monitor receives no input signal activation. In the computer these signals are given by peripheral input device, for example, keyboard, mouse movements, etc.)

Hibernate Suspend.

In this mode, all system data are saved on the hard disk before powering down. When this mode is activated, all system state and contents are saved to the hard drive after a period of inactivity defined by the user.

No power or very little power is drawn from the battery module in this mode. However, depending on the amount of RAM that has been installed on your Tablet, the amount of time the system requires to restore all its previous contents can range from five to 20 seconds.

Power button action.

The Tablet power button can be set to turn off the system or activate the suspend mode under an environment of operating systems.

Sleep mode (sleep).

Defined as the state of derating used by the computer or monitor after entering or moving to a period of inactivity (To monitor these signals are given by the computer). In practice, the computer keeps on consuming less energy and with the monitor in black. This mode is deactivated when it receives a signal from the mouse or keyboard.

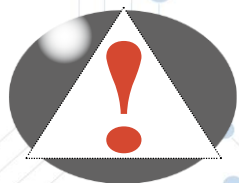
Standby mode (off).

Defined as a state of "off" on tablets energy consumption (passive power) as still connected to the mains. In practice the tablet is off, but consumes very little power. It has two modes, one in which all programs are closed and relight the tablets returns zero and the hibernation state in which is stored on the hard disk the current state of Windows, that is, when you turn on the tablet again It lights up with programs and windows that were active.

To activate these energy saving modes follow the instructions presented below. If you cannot do this, ask your network administrator computer that you configure this mode. Remember that there are several combinations for configuration and energy saving, select the one best suits you.

The Power System Battery.

Before using the computer on battery 1st time, check the status icon battery in the Toolbar Windows or Linux to make sure the battery is fully charged. See Battery Status later in this section for a description and explanation of the Windows Battery icon. Charging the battery takes about 2.5 hours when the system is off. If possible, always charge the battery completely.



NOTE:

If you use the battery so frequently that it exceeds more than 20 times with download / upload completely in one month, we recommend performing the process "Battery Calibration" every 3 months to maintain battery life.

In general, using the battery until the battery-warning indicator appears and fully recharges the battery each time (cycle discharge / charge) ensure the exact status report cell or battery.

Automatic battery charging.

To charge the battery when it is in the tablets, plug the AC adapter into the computer and an electrical outlet. The charging time is approximately 3-4 hours when the Tablet is turned off and approximately 6 to 7 hours is on. When the battery is fully charged, the charge indicator turns off the battery.



NOTE:

If the system works with high load or high ambient temperature, the battery cannot charge fully. It is necessary to continue to charge it with the AC adapter plugged in until the charging LED turns off.

FCC Caution:

This device complies with part 15 of the FCC Rules. Operation is subject to the following two conditions: (1) This device may not cause harmful interference, and (2) this device must accept any interference received, including interference that may cause undesired operation.

This equipment complies with FCC radiation exposure limits set forth for an uncontrolled environment .

This transmitter must not be co-located or operating in conjunction with any other antenna or transmitter.

Note: This equipment has been tested and found to comply with the limits for a Class B digital device, pursuant to part 15 of the FCC Rules. These limits are designed to provide reasonable protection against harmful interference in a residential installation. This equipment generates, uses and can radiate radio frequency energy and, if not installed and used in accordance with the instructions, may cause harmful interference to radio communications. However, there is no guarantee that interference will not occur in a particular installation. If this equipment does cause harmful interference to radio or television reception, which can be determined by turning the equipment off and on, the user is encouraged to try to correct the interference by one or more of the following measures:

- Reorient or relocate the receiving antenna.
- Increase the separation between the equipment and receiver.
- Connect the equipment into an outlet on a circuit different from that to which the receiver is connected.
- Consult the dealer or an experienced radio/TV technician for help.