

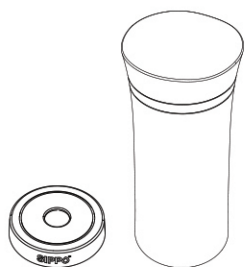
SIPPO™

Sippo Quick Start Guide

For a detailed user manual, please visit
www.sippo.com/pages/manuals

About Device Use

- The Sippo body and smart cup pad can be separable by gently pulling the magnets apart.



- ONLY the cup body can be washed. The smart cup pad cannot be washed or exposed to moisture as it contains sensitive electronics.



-Page 2-

DECLARATION OF CONFORMITY WITH FCC RULES FOR ELECTROMAGNETIC COMPATIBILITY

This device complies with Part 15 of the FCC Rules. Operation is subject to the following two conditions: (1) this device may not cause harmful interference, and (2) this device must accept any interference received, including interference that may cause undesired operation.

NOTE: This equipment has been tested and found to comply with the limits for a Class B digital device, pursuant to Part 15 of the FCC Rules. These limits are designed to provide reasonable protection against harmful interference in a residential installation. This equipment generates, uses and can radiate radio frequency energy and, if not installed and used in accordance with the instructions, may cause harmful interference to radio communications. However, there is no guarantee that interference will not occur in a particular installation.

If this equipment does cause harmful interference to radio or television reception, which can be determined by turning the equipment off and on, the user is encouraged to try to correct the interference by one or more of the following measures:

- Reorient or relocate the receiving antenna.
- Increase the separation between the equipment and receiver.
- Connect the equipment into an outlet on a circuit different from that to which the receiver is connected.
- Consult the dealer or an experienced radio/TV technician for help.

This equipment complies with FCC radiation exposure limits set forth for an uncontrolled environment. This transmitter must not be co-located or operating in conjunction with any other antenna or transmitter.

-Page 4-

Read Before Use

- To ensure safe and proper usage, please read this manual carefully before using the product.
- Bluetooth 4.0 technology requires iOS 7.0 and Android 4.3 or above.
- Sippo software will be updated periodically, please download the latest version.

Safety Precautions

The Sippo application provides a recommendation on how much to drink that is general in nature for average healthy individuals in everyday environments. It is not meant for those undertaking intense exercise, individuals exposed to environmental extremes or suffering illnesses or health conditions, or those that are pregnant or breast-feeding. The recommendations should not take the place of specific individual needs, medical advice or common sense. If the conditions or your activity change, you should reassess your hydration requirements accordingly. If you experience any unexpected symptoms, discontinue use and consult a medical practitioner.

About Battery Use

- Keep batteries out of the reach of children.
- Remove batteries from the unit when not in use for extended periods to prevent product damage.
- Do not mix new and used batteries.
- Do not put the unit in fire or expose to excessive heat.
- Please dispose of used batteries correctly in accordance with local laws and regulations.

-Page 1-

- ONLY the cup body can be high-temperature sterilized; do not put smart cup pad in the dish-washing machine.
- Do not drop your Sippo from height as this may cause possible damage to the key sensor, affecting the accuracy of product.
- Please keep away from fire and keep out of the reach of children.

Specification

Wireless Transmission	Low-Power Dissipation Bluetooth 4.0	Volume	14 fl. oz.(420ml)
Accuracy	+/- 0.5 fl. oz.(15ml)	Dimensions	8 in. x 3 in. (200 mm x 78 mm)
Waterproof	Cup Body Only	Shell Material	AS+ABS
Flask Material	304 Stainless Steel	Weight	13.3 oz.(376g)

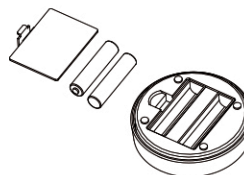
-Page 3-

Sippo Application

- Visit the App Store or Google Play.

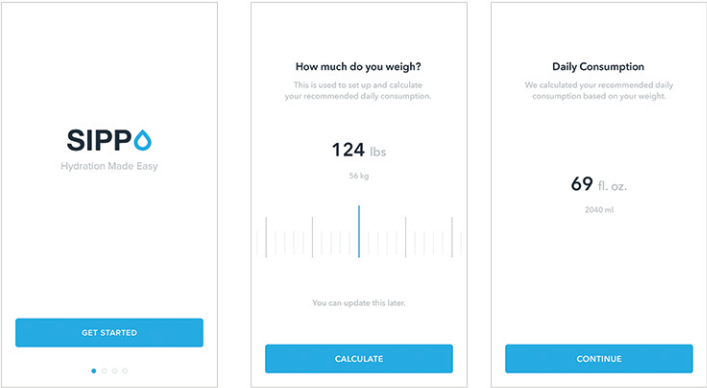


- Search "Sippo".
- Download and install the app.
- Turn on Bluetooth under your mobile phone settings menu.
- Remove the battery cover at the bottom, insert 2 AAA batteries, ensuring the battery polarity (+) (-) is correct.



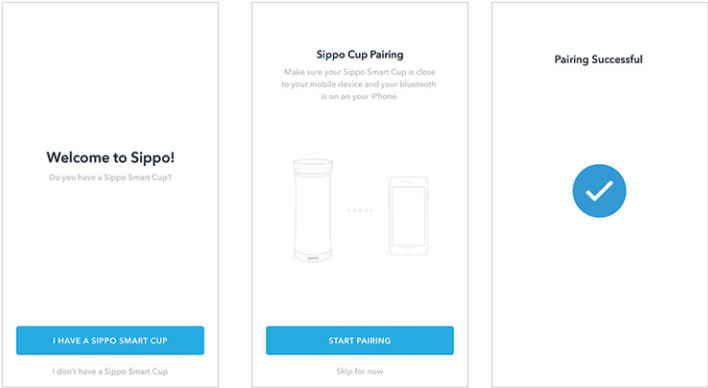
-Page 5-

Sippo Application



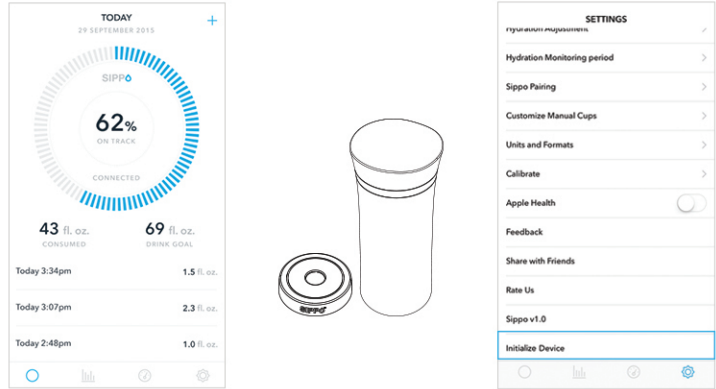
Start the app. Enter your weight. A recommended target amount is displayed.

Sippo Application



I have a Sippo Cup. Sippo Pairing. Successfully Paired.

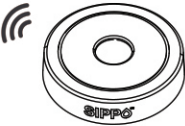
Sippo Applicaton



You will see "Connected" in the ring on the home screen. Remove the smart pad and place on a flat surface. Go to "Settings", and press "Initialize Device".

Sippo Application

- Wait to hear a beep.



- When you hear a beep, reconnect cup and flask. Your Sippo is ready to use.
- The steps for recording drinking are:
 1. Put down the cup on the table;
 2. Pick up and drink water, replacing the lid;
 3. Put the cup back on the table.This process will ensure each sip will be recorded.
- Please note, after filling with water, if you do not put the cup on the table before drinking, the data will not be recorded.

Caution

The user is cautioned that changes or modifications not expressly approved by the party responsible for compliance could void the user's authority to operate the equipment.