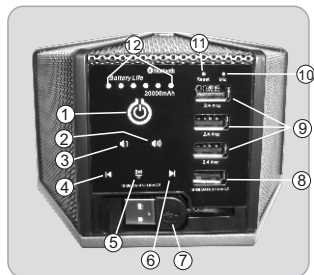
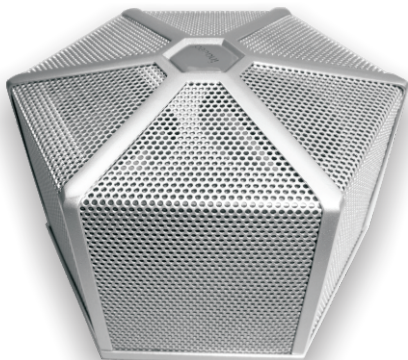


# INDEED

## PowerBank Speaker Instructions



- ① Power
- ② Volume +
- ③ Volume -
- ④ Previous
- ⑤ Play/Pause/Call/Mode Switch
- ⑥ Next
- ⑦ USB Charging Cable
- ⑧ Data In/Out
- ⑨ USB Power Output Interface
- ⑩ MIC
- ⑪ Reset Button
- ⑫ Power/Battery Indicating Light

### Features

1. **Three Main Functions:** Bluetooth Speaker + Power Bank + 16GB Data Storage
2. **Buttons:** All buttons are touch except the Power button
3. **Power On/Off:** Press the power button (⏻) for 2-3 seconds to turn on or off.
4. **Volume:** Touch (⏮) to decrease the - volume, touch (⏭) to increase + volume.
5. **Bluetooth Mode:** To engage Bluetooth mode, Touch (🔊) for 2-3 seconds to engage Bluetooth and switch between storage card music. Touch (⏮) to play and pause music. When playing music in Bluetooth mode, touch (⏮) or (⏭) to play music, previous song and next song. If you receive a phone call, touch (📞) to answer the phone.
6. **Charging:** **DO NOT CHARGE VIA AN ADAPTER AND/OR WALL SOCKET . ❌**  
**CHARGE VIA A COMPUTER USB PORT ONLY.**  
Pull out the retractable USB cable for charging (5V 1 - 2A charging port, fully charged time is 3- 5 hours).
7. **Bluetooth Connection:** Turn on the power and select Bluetooth mode. Turn on Bluetooth on your mobile device and connect (in the list of Bluetooth devices on your mobile, select "INDEED SPEAKER").  
[Note: Simultaneous Bluetooth connection is not supported]
8. **Mobile Power Function:** Speaker has 3 USB power outputs for charging mobile/other devices. Output voltage is 5V, output current is 0.5 - 2.4A.
9. **Data Storage Function:** Built in 16GB TF card. Transfer data by using the USB retractable data cable from computer and/or plugging USB from device into 16GB Storage Port.

### Product Specifications

Product Size	136.5* 118.5* 88 mm	Speaker	Ø45mm , 4Ω5W*2
Packaging Size	155*155*100mm	Power Rating	5W*2
Bluetooth Version	V2.1+EDR	Distortion	≤1%
Distance	10M	Frequency Response	60Hz-18KHz
Voltage	DC 5V	SNR	≥85db
ChargingTime	3-6 hours	Battery Capacity	20000Mah
PlayTime	5-12 hours	OutputVoltage/Current	5V/0.5-2.4A

### Safety Instructions

1. **DO NOT CHARGE VIA AN ADAPTER AND/OR WALL SOCKET . ❌**  
**CHARGE VIA A COMPUTER USB PORT ONLY**
2. Pull out the retractable USB cable for charging (5V 1- 2A charging port, fully charged time is 3- 5 hours).
3. Stop charging, **UNPLUG** when fully charged.
4. If there is a functional failure, insert a pin into the RESET button opening to engage the reset function.
5. When playing music, please do not put the speaker on the edge of a table/desk. Vibrations could cause the speaker to move.

changes or modifications not expressly approved by the party responsible for compliance could void the user's authority to operate the equipment.

This equipment has been tested and found to comply with the limits for a Class B digital device, pursuant to Part 15 of the FCC Rules. These limits are designed to provide reasonable protection against harmful interference in a residential installation. This equipment generates, uses and can radiate radio frequency energy and, if not installed and used in accordance with the instructions, may cause harmful interference to radio communications. However, there is no guarantee that interference will not occur in a particular installation.

If this equipment does cause harmful interference to radio or television reception, which can be determined by turning the equipment off and on, the user is encouraged to try to correct the interference by one or more of the following measures:

- Reorient or relocate the receiving antenna.
- Increase the separation between the equipment and receiver.
- Connect the equipment into an outlet on a circuit different from that to which the receiver is connected.
- Consult the dealer or an experienced radio/TV technician for help.

This device complies with Part 15 of the FCC Rules. Operation is subject to the following two conditions: (1) this device may not cause harmful interference, and (2) this device must accept any interference received, including interference that may cause undesired operation.