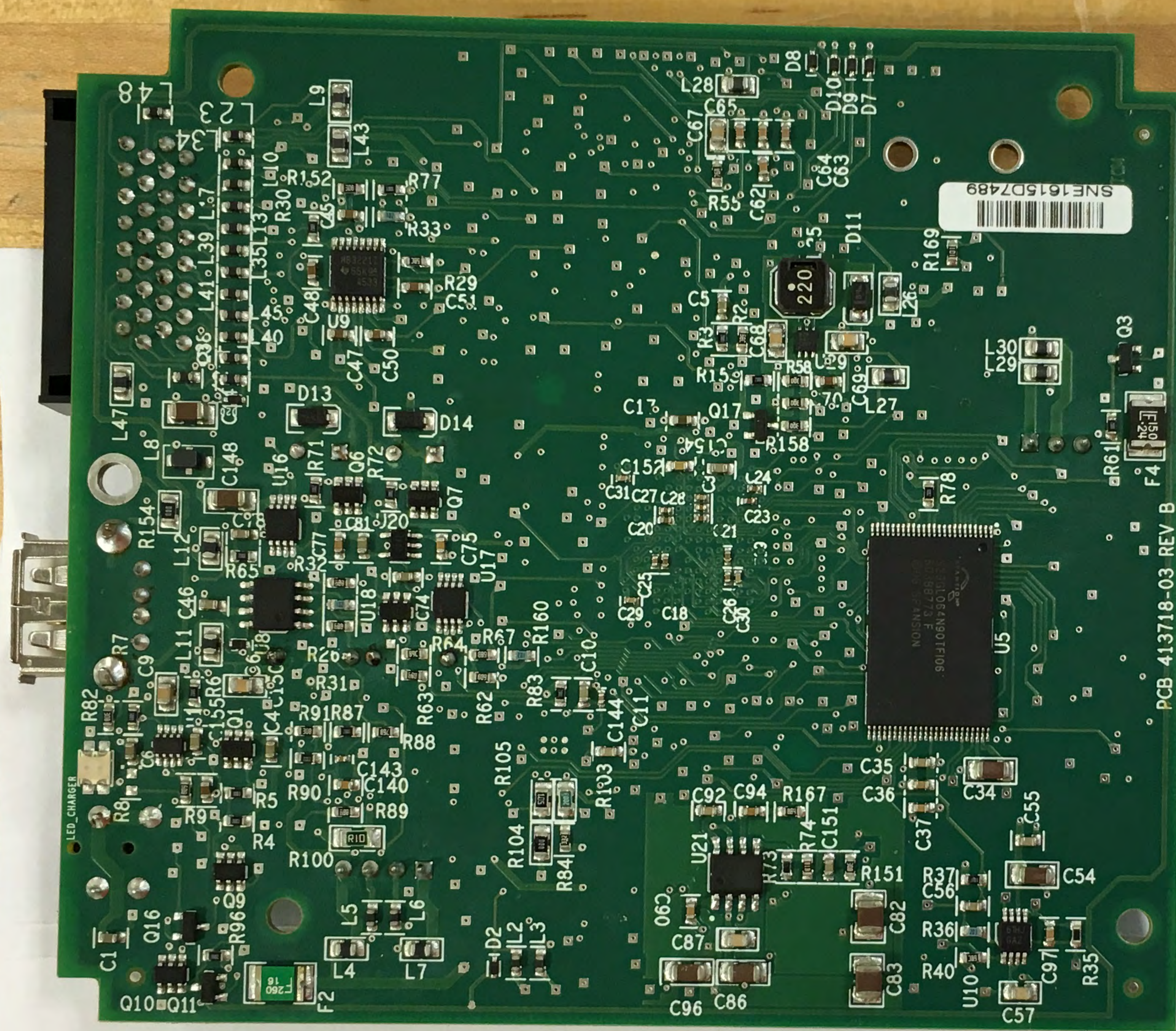
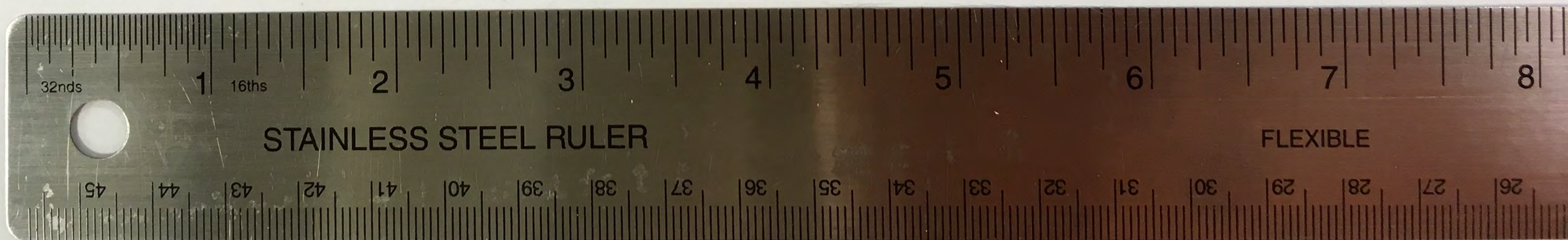


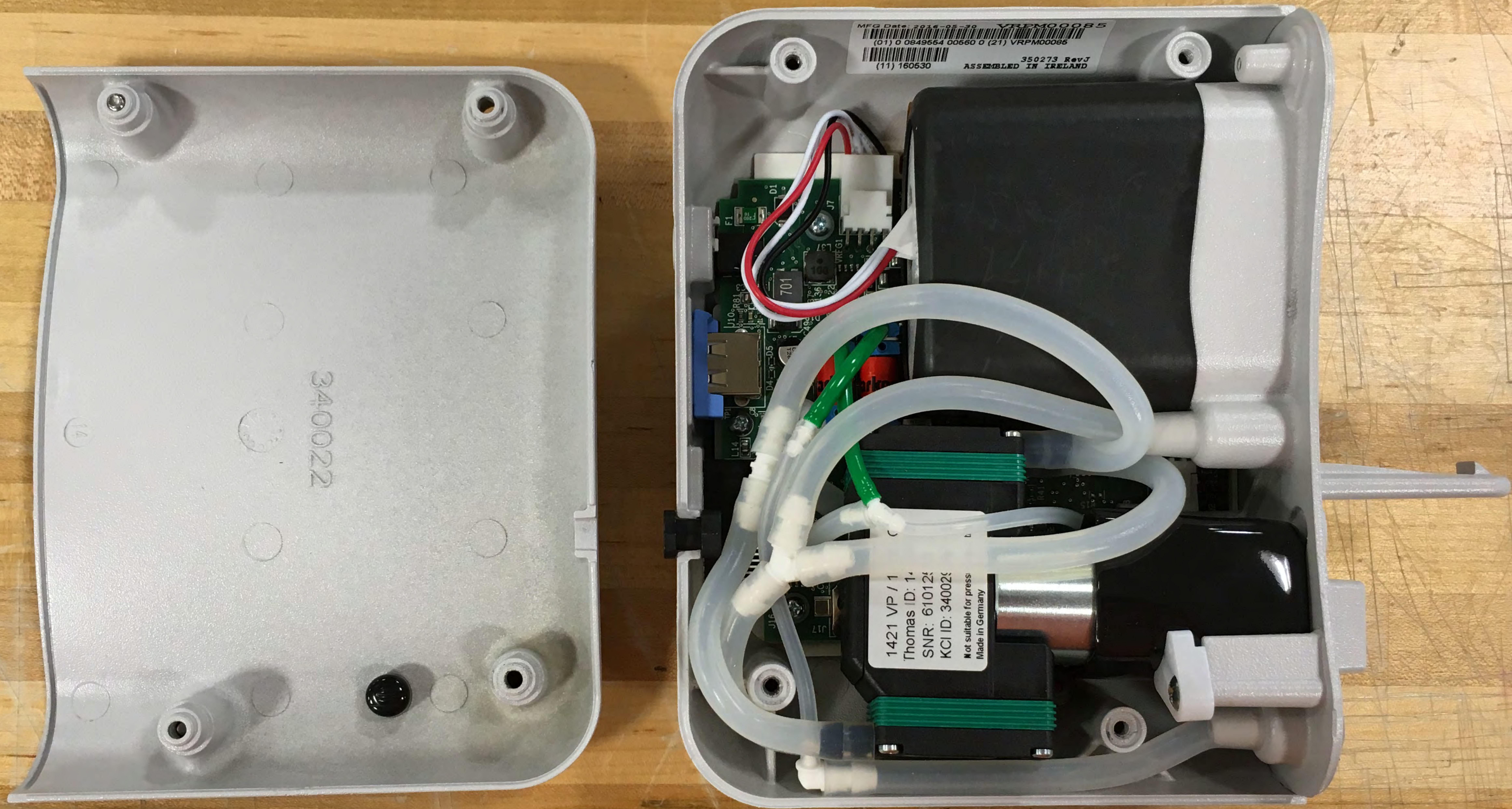
FRONT

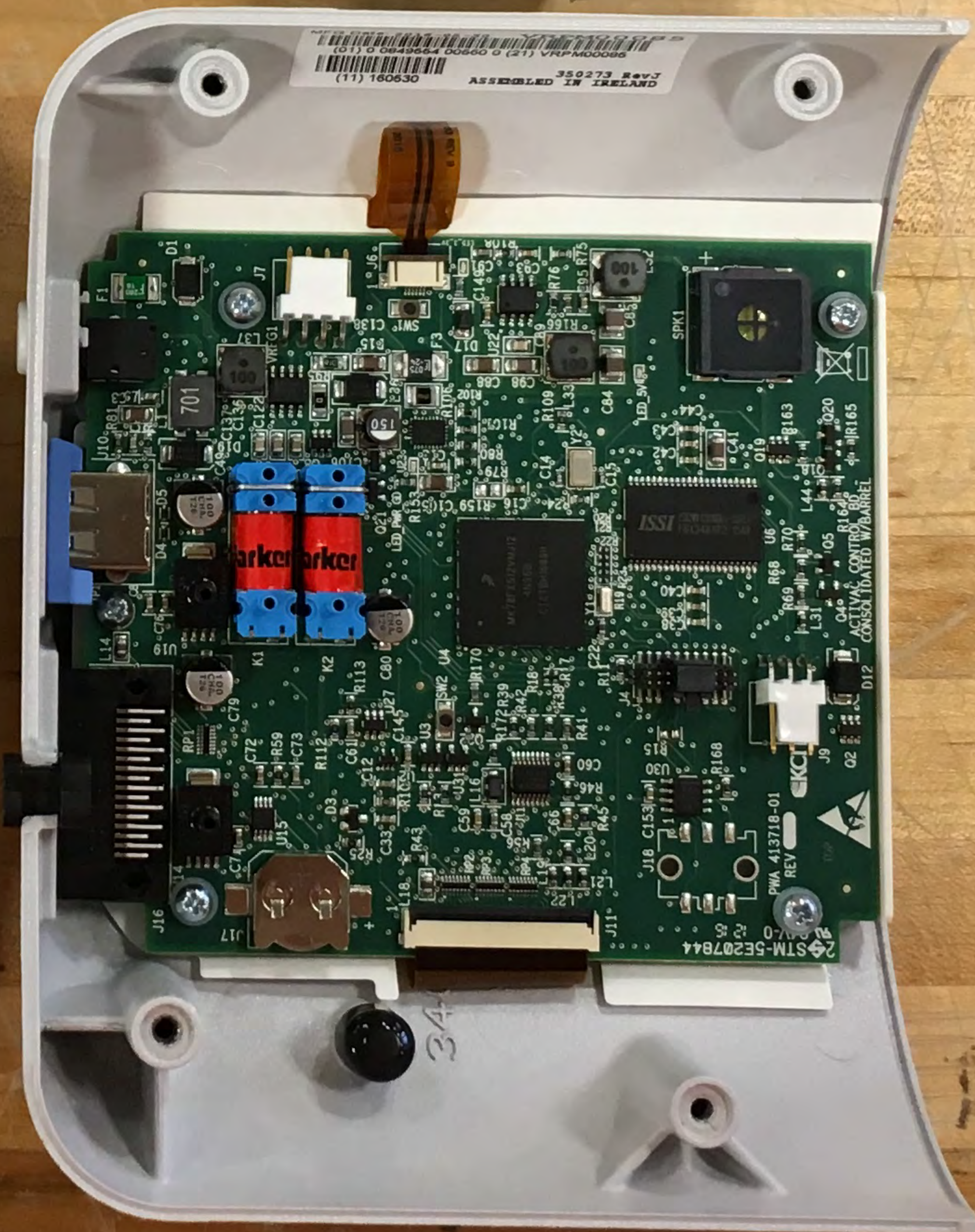
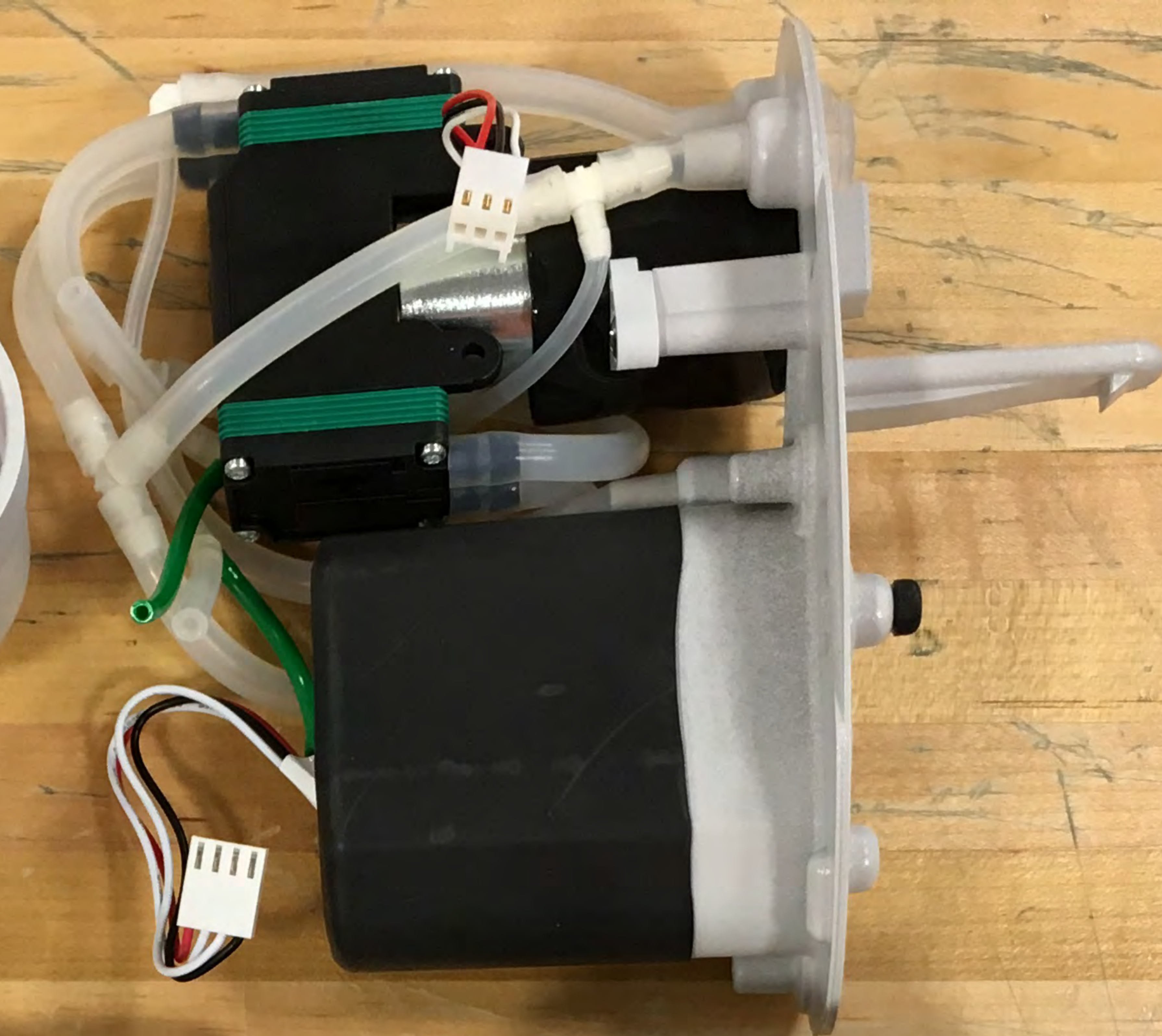
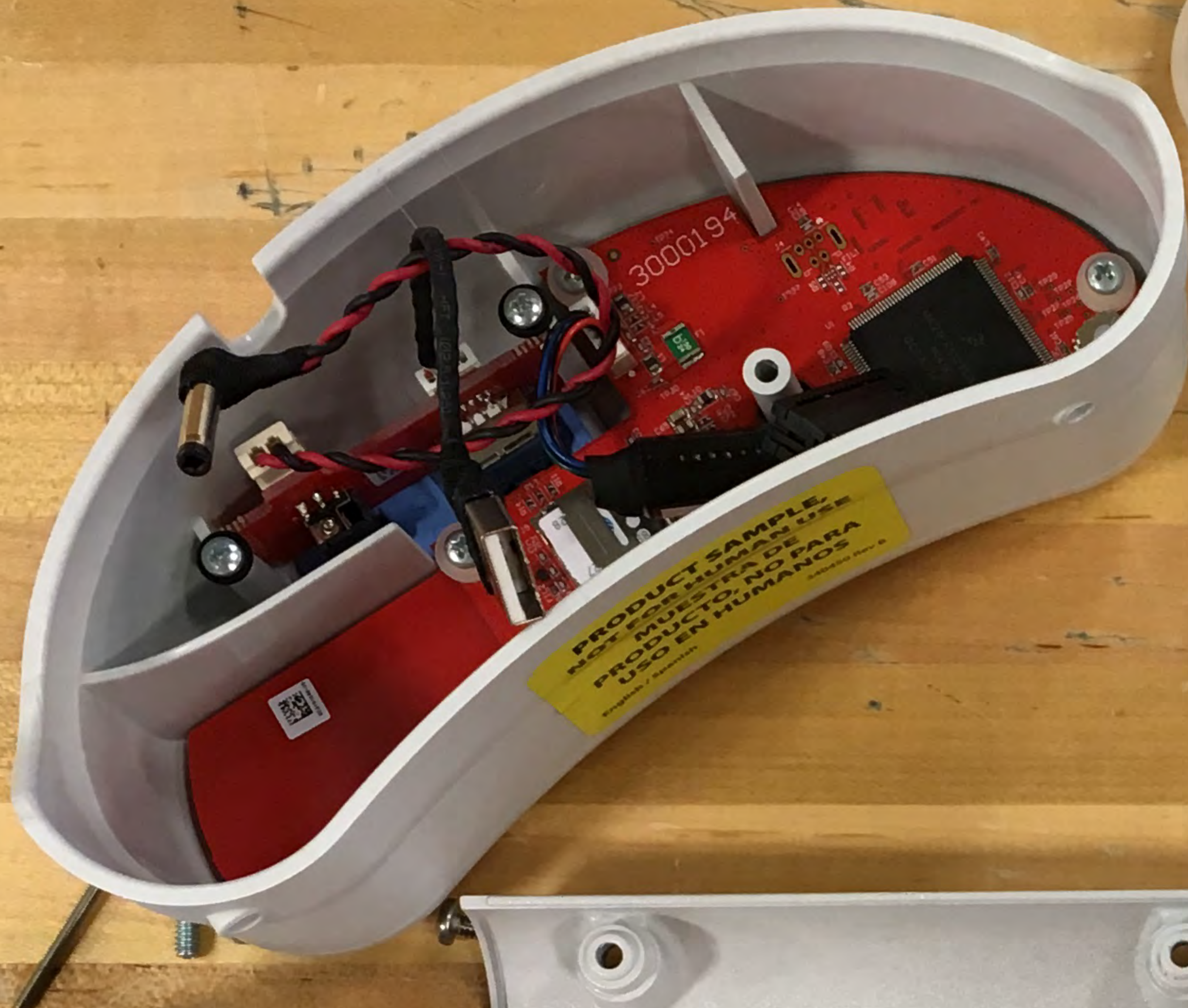




REAR







BOTTOM



English / Spanish

340450 Rev B

**PRODUCT SAMPLE,
NOT FOR HUMAN USE**

**MUESTRA DE
PRODUCTO, NO PARA
USO EN HUMANOS**

ACTIV.A.C.
THERAPY SYSTEM

iOn PROGRESS™
REMOTE THERAPY MONITORING

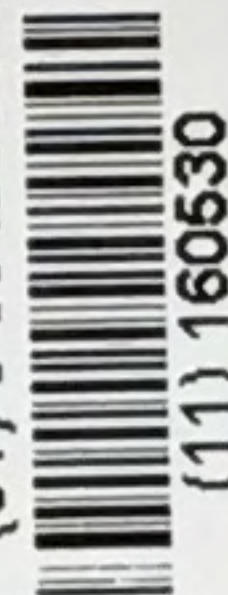


Manufactured for:
KCI USA, Inc.
12930 IH 10 West
San Antonio, TX 78249 USA
Made in Ireland

MFG Date: 2016-05-30 VRPM00085

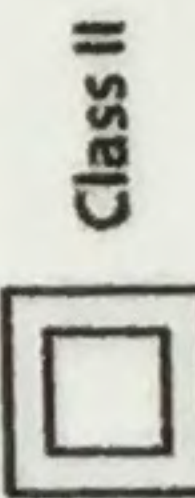


(01) 0 0849664 00660 0 (21) VRPM00086



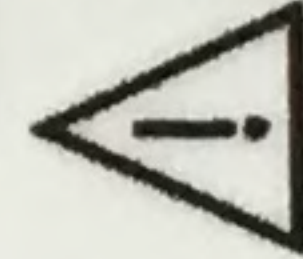
350273 Rev J
ASSEMBLED IN IRELAND

FCC Model: ActivAC RTM
Contains FCC ID: R17UE910N3



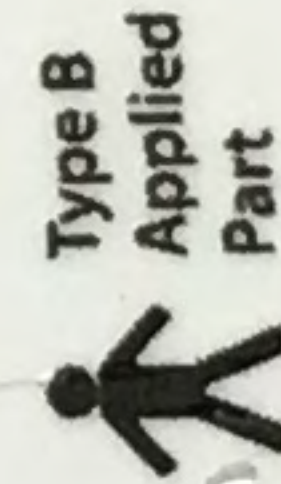
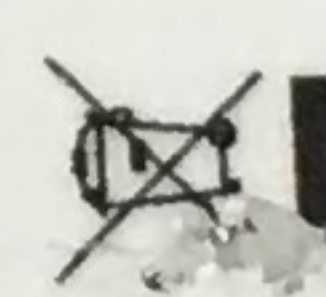
IPXO Ingress Protection

Class II

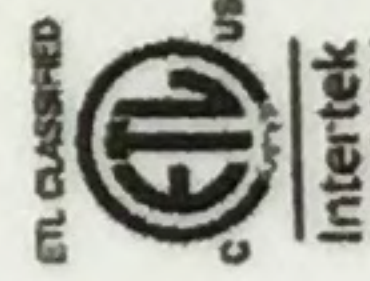


Caution: Consult
Accompanying
Documents

Rx Only



Type B
Applied
Part



Conforms to UL 60601-1, IEC 60601-1-4,
IEC 60601-1-6, IEC 60601-1-8.
Unit Input: 12 VDC 3.3 Amps



Intertek
3182664

KCI™
An Acclivity Company
416942 Rev XA

©2016 KCI Licensing, Inc. All rights reserved.

DV BUILD DRAFT