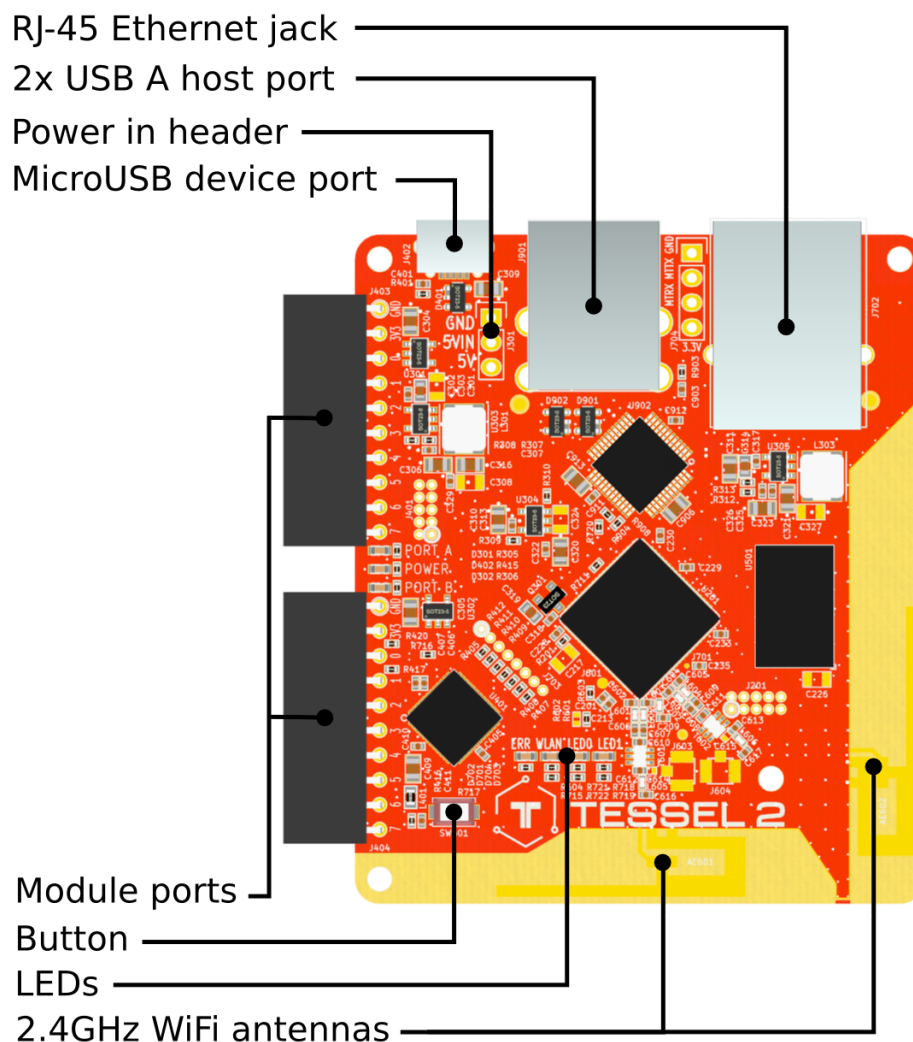


# Tessel 2 User Manual

Tessel is designed to make it easy to prototype Internet-connected devices. The board is programmed in JavaScript (Node.js), includes WiFi, USB, and Ethernet ports, and gives you control over its 16 GPIO, all through JS.

Everything you need to get started with Tessel is online at [tessel.io/start](http://tessel.io/start).

Important hardware features of Tessel are highlighted in the render below.



## FCC Information and Copyright

This equipment has been tested and found to comply with the limits for a Class B digital device, pursuant to part 15 of the FCC Rules.

These limits are designed to provide reasonable protection against harmful interference in a residential installation. This equipment generates,

uses and can radiate radio frequency energy and, if not installed and used in accordance with the instructions, may cause harmful interference

to radio communications. However, there is no guarantee that interference will not occur in a particular installation. If this equipment does

cause harmful interference to radio or television reception, which can be determined by turning the equipment off and on, the user is

encouraged to try to correct the interference by one or more of the following measures:

- Reorient or relocate the receiving antenna.
- Increase the separation between the equipment and receiver.
- Connect the equipment into an outlet on a circuit different from that to which the receiver is connected.
- Consult the dealer or an experienced radio/TV technician for help.

### 15.19 Labelling requirements.

This device complies with part 15 of the FCC Rules. Operation is subject to the following two conditions:

- (1) This device may not cause harmful interference, and
- (2) this device must accept any interference received, including interference that may cause undesired operation.

changes or modifications not expressly approved by the party responsible for compliance could void the user's authority to operate the equipment.

**FCC RF warning** statement: the device has been evaluated to meet general RF exposure requirement , The device can be used in portable exposure condition without restriction.

The Tessel 2 module is designed to comply with the FCC statement. FCC ID is 2AHDY-T2.

The host system using OA, should have label indicated it contain modular's FCC ID :2AHDY-T2

This radio module must not installed to co-locate and operating simultaneously with other radios in host system, additional testing and equipment authorization may be required to operating simultaneously with other radio.