

Quick installation Guide



Android

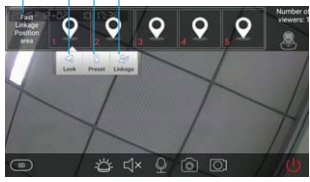
iOS



SHENZHEN MIRODDI TECHNOLOGY CO., LTD
Add: Yongfengtian industrial Garden, 3rd industrial
Park, Fenghuang ,Fuyong Town,, Bao' an District,
Shenzhen, China, 518103
Tel: 86-755-29081823 Fax: 86-755-89475709
<http://www.bw-camera.com>
<http://www.bwcamera.com.cn>

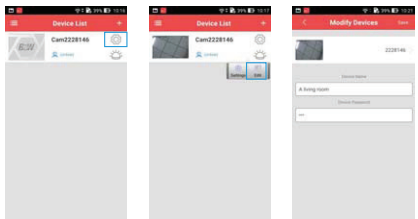
V. Settings on Fast Linkage Location Areas

Location area: The preset main monitoring areas;
View: Speed mobilize the camera to turn to preset monitoring area;
Positioning: To set a location area for quick view and a monitoring area to which the camera will turn once alarmed.
Linkage: Linkage operation between location areas and alarm devices. The camera will automatically turn to the area once alarmed.



VI. Cameras Modification

- 1. Give the camera a name, which will be seen in the device list;
- 2. Once the camera password has been changed by the administrator, other users can click edit to change the password into the new one.

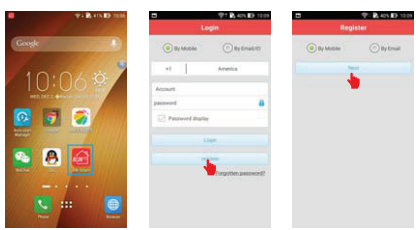


I. APP Installation

- 1. Scan the QR code in manual orgift box according to phone system (iOS/ Android) to download "BW smart" ;
- 2. For iOS users, you can download "BW smart" directly from App Store;
- 3. For Android users, you can download "BW smart" from Google play store.
- 4. PC Clients: You can download "BW Smart" from BW website: www.bw-camera.com

II. User Registration

- 1. For the first time use "BW smart" App, you need to register an account.
- 2. Follow the guidance to complete user registration with phone number or mail ID.

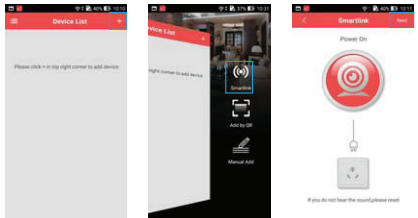


1

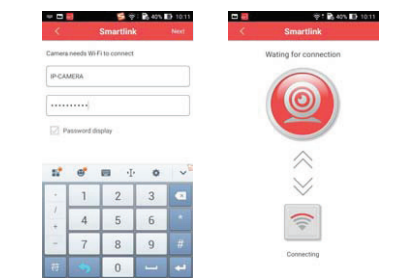
III. Adding Cameras

1. Smart Link

Step 1: Device power on

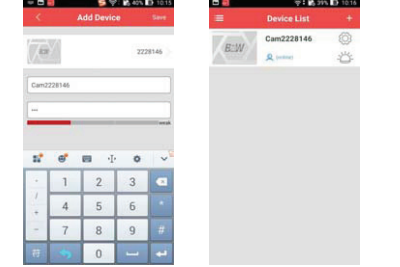


Step 2: Input wifi password to start connecting



2

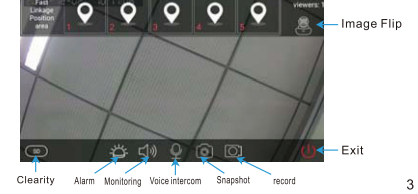
Step 3: Connection successful, input camera password



- 2. Add by QR
This mode is assistant linkage mode, which is suggested to be used when smart link failed. Please follow prompts to perform the operation, so it won't go into details here.
- 3. Manual Add: This mode is to add cameras which have already been connected to wifi.

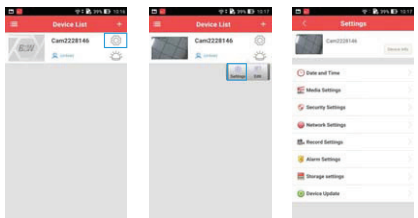
IV. Real-time Video

Click one camera on device list interface to enter real-time video monitoring

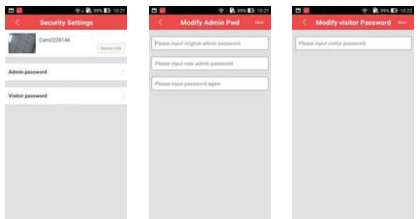


3

VII. Camera Settings



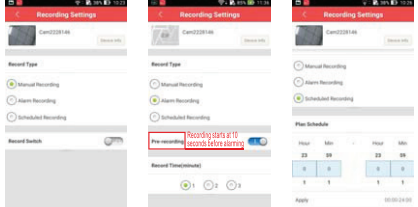
- 1. Time settings: To set the time zone and date of camera.
- 2. Media settings: To setup the video format, voice volume and screen flip.
- 3. Security settings:
Admin password: If login in by admin password as administrator, you will have access to modify all camera parameters.
Visitor password: If login by visitor password, you can view the camera parameters but no access to modify.
Tips: Once successfully added, the camera password should be changed in time to avoid privacy disclosure



5

- 4. Network settings
If you want to switch wifi, enter network settings interface, select a new wifi, input the wifi password and network switch is done.
- 5. Record settings
To setup a recording format. This setting is available only after inserting a TF card

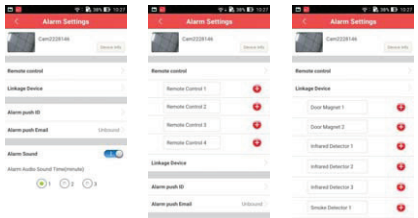
Manual record: Continue recording for 24 hours.
Alarm record: Recording begins once alarm occurs. There are options to 1 minute/2 minutes/ 3 minutes on the recording time.
Timing record: To make a plan on records according to your need.



- 6. Alarm settings
Tips: Both remote control and linkage device are peripheral devices. This setting should be done cooperatively with the alarm device

- 1) Remote control: There's one on-off button for turning on/off alarm of all cameras. 4 remote controls can be added to the same camera
- 2) Linkage device: Up to 8 devices can be added, namely door sensor, IR detector, smoke detector and gas detector, and linkage location areas can be started once added successfully(see more details in section V)
- 3) Alarm push account: To which account the alarm message need to be sent(there's one account for each register)
- 4) Alarm push email: The captured pictures will be sent to the preset email once the camera alarms
Important: You need to log in the mailbox and start SMTP service in the email settings
- 5) Motion detection: The camera will start alarm when the monitoring picture keeps changing
- 6) Alarm voice: There are options to 1 minute/2 minutes/ 3 minutes on the alarming time
Important: After the alarm settings complete, the alarm switch on interface of device list need to be turn on. The alarm setting start to take into effect only after the alarm button is turn on and becomes red

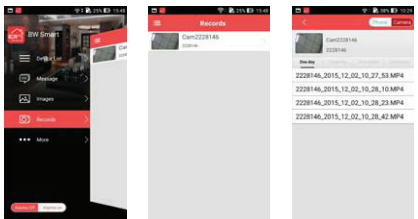
6



- 6. Storage Settings: To view the information of storage card or to format the storage card. Warning: Please unplug the camera before inserting/removing a card.
- 7. Device Update Checking: Support remote update on camera software. Warning: Do not unplug the camera during update, or it may cause to camera damage.

VIII. Video Playback

- 1. Local storage: If recording is performed on the phone monitoring interface, the video will be stored on the phone.
- 2. Cameras storage: It requires a TF card to insert to the camera, and recording switch be on in mobile settings, the video will be automatically stored into the TF card, which can be remotely viewed on the phone.



7

Federal Communications Commission (FCC) Statement

This device complies with part 15 of the FCC Rules. Operation is subject to the following two conditions: (1) This device may not cause harmful interference, and (2) this device must accept any interference received, including interference that may cause undesired operation.

Note: This equipment has been tested and found to comply with the limits for a Class B digital device, pursuant to part 15 of the FCC Rules. These limits are designed to provide reasonable protection against harmful interference in a residential installation. This equipment generates, uses and can radiate radio frequency energy and, if not installed and used in accordance with the instructions, may cause harmful interference to radio communications. However, there is no guarantee that interference will not occur in a particular installation. If this equipment does cause harmful interference to radio or television reception, which can be determined by turning the equipment off and on, the user is encouraged to try to correct the interference by one or more of the following measures:

- Reorient or relocate the receiving antenna.
- Increase the separation between the equipment and receiver.
- Connect the equipment into an outlet on a circuit different from that to which the receiver is connected.
- Consult the dealer or an experienced radio/TV technician for help.

Warning: Changes or modifications made to this device not expressly approved by Shenzhen MIRODDI Technology Co., Ltd may void the FCC authorization to operate this device.

Note: The manufacturer is not responsible for any radio or tv interference caused by unauthorized modifications to this equipment. Such modifications could void the user's authority to operate the equipment.

The distance between user and products should be no less than 20cm