

Shenzhen Yunding Communication Electronics Co., LTD

TEL: +86 0755-23073599

FAX: +86 0755-23097189

E-mail:wht0809@163.com

APPROVAL SHEET

Shenzhen Radio Technology Co.,Ltd

CUSTOMER:

MI610-FPC-BT2.4G-1.13-L500MM-IPEX

DESCRIPTION:

PART NO.:

CUS PART NO.:

2025-5-12

D A T E:

Yunding signature

ENGINEERING DEPARTMENT	Q C DEPARTMENT	SALES DEPARTMENT
Sean.Zhang	Jasper.Wu	HongTao.Wang

Customer signature

ENGINEERING DEPARTMENT	Q C DEPARTMENT	PURCHASING DEPARTMENT

TEL: 0755 23073599

✂ Approval in duplicate, please signed by your company.

Shenzhen Yunding Communication Electronics Co., LTD

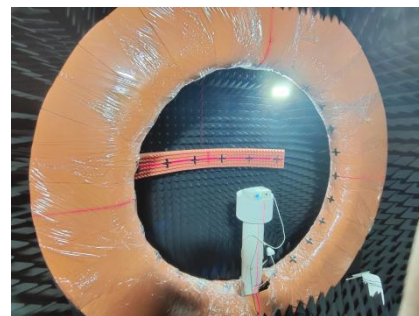
TEL: +86 0755-23073599

FAX: +86 0755-23097189

E-mail:wht0809@163.com

1.Test items and equipment

	Test items	Equipment
1. S11-parameter	1. Return Loss 2. VSWR	network analyzer: Agilent E5071B HP 8753D
2.Active test	1. Transmitting power 2. Receiving sensitivity	1. Darkroom: ETS 7x4x3 m (3D) Chamber ETS 5x3x3 m (3D) Chamber 2.general-purpose tester : Agilent 8960 E5515B ×2 StarPoint SP6011 Cmw500
3.Passive test	1.Gain 2.Efficiency	1. Darkroom: ETS 7x4x3 m (3D) Chamber ETS 5x3x3 m (3D) Chamber 2. network analyzer: Agilent E5071B HP 8753D



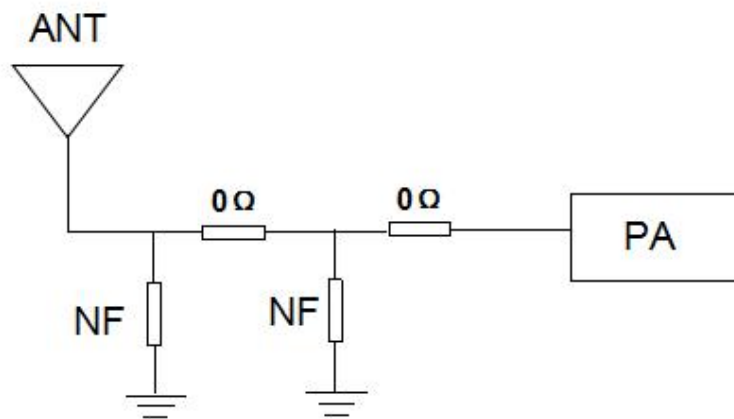
Shenzhen Yunding Communication Electronics Co., LTD

TEL: +86 0755-23073599

FAX: +86 0755-23097189

E-mail:wht0809@163.com

2. Matching circuit - antenna



Our company has not made any modifications to the matching circuit.

Shenzhen Yunding Communication Electronics Co., LTD

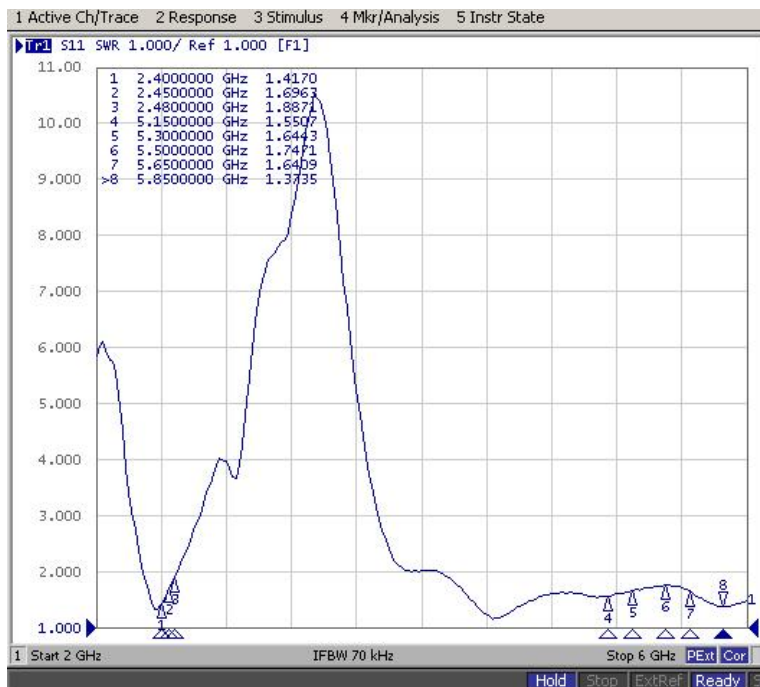
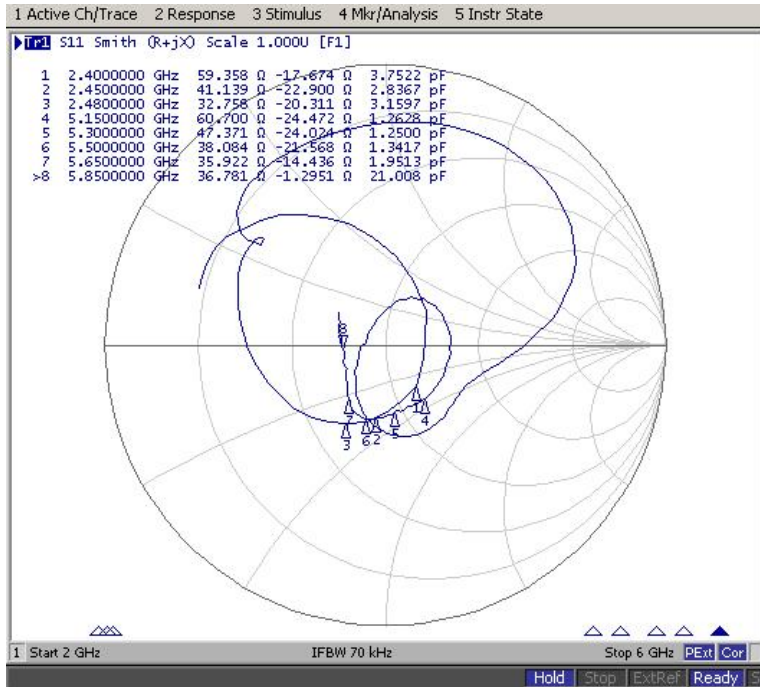
TEL: +86 0755-23073599

FAX: +86 0755-23097189

E-mail:wht0809@163.com

3. Antenna performance

SWR



Shenzhen Yunding Communication Electronics Co., LTD

TEL: +86 0755-23073599

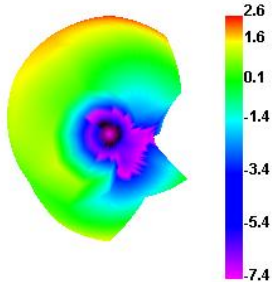
FAX: +86 0755-23097189

E-mail:wht0809@163.com

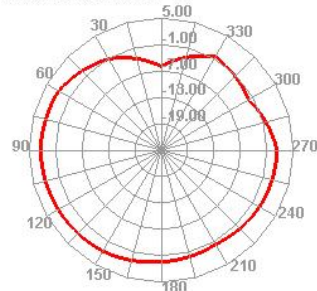
4. Antenna efficiency and gain

Passive Test For BT		
Freq (MHz)	Effi (%)	Gain (dBi)
2400	91.98	2.56
2410	89.09	2.32
2420	85.64	2.19
2430	83.99	2.11
2440	85.69	2.19
2450	88.13	2.23
2460	88.14	2.13
2470	86.14	1.78
2480	85.09	1.65
2490	85.46	1.7
2500	84.63	1.74

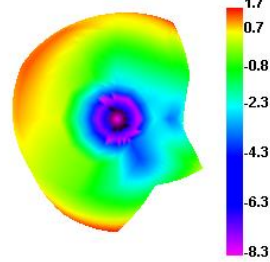
2400.000MHz



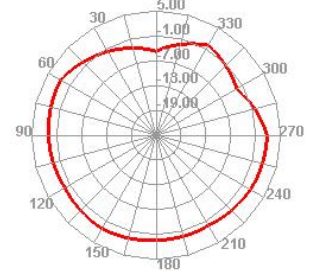
2400.000MHz H



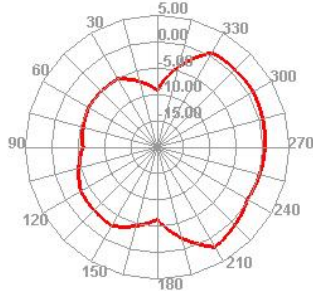
2500.000MHz



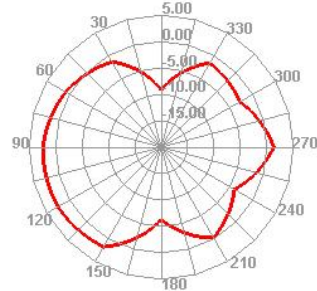
2500.000MHz H



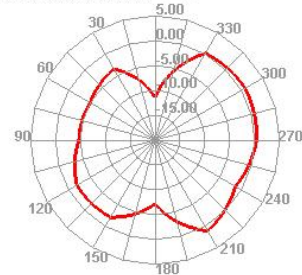
2400.000MHz E1



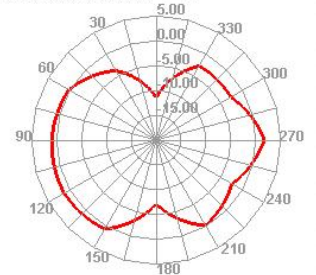
2400.000MHz E2



2500.000MHz E1



2500.000MHz E2



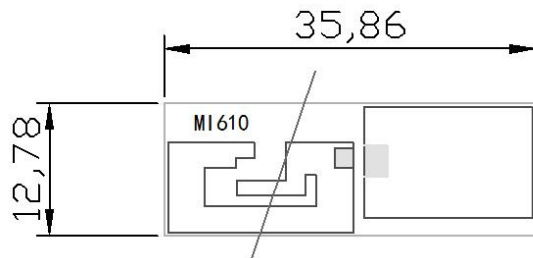
Shenzhen Yunding Communication Electronics Co., LTD

TEL: +86 0755-23073599

FAX: +86 0755-23097189

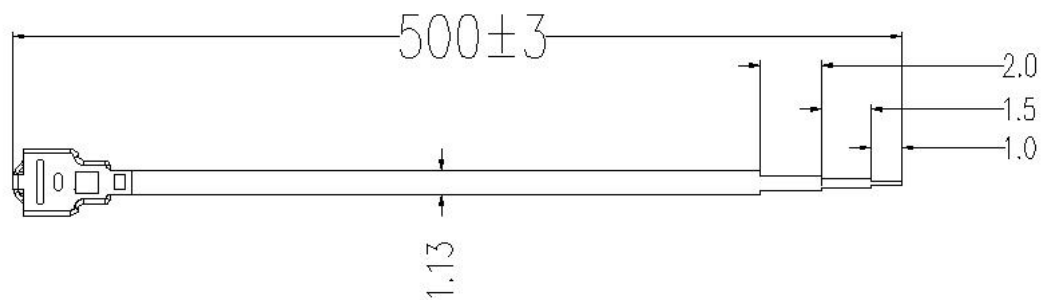
E-mail:wht0809@163.com

5. Antenna structure diagram:



The ink is black, the silk screen is white, the FPC substrate is one and a half pairs, and the adhesive is 3M947.

IPEX 1



Shenzhen Yunding Communication Electronics Co., LTD

TEL: +86 0755-23073599

FAX: +86 0755-23097189

E-mail:wht0809@163.com

Technical parameters of electrical appliances

Electrical Specifications

Frequency Range	2400~2500MHz
VSWR	≤ 2.0
Input Impedance	50 Ω
Gain	3DBI
Radiation direction	omnidirectional

Mechanical Specifications

Antenna color	Black
Input connector	IPEX
Antenna length	500mm
Working Temperature	-40℃~+85℃
Working Humidity	20~80%