

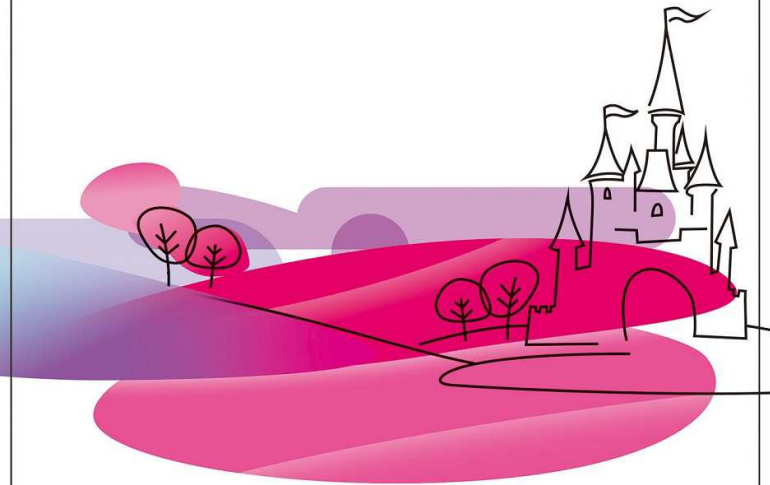
3+

Disney

WALKIE TALKIES

100-120 Feet
(30.5M - 36.5M)
in Open Area With
New Batteries

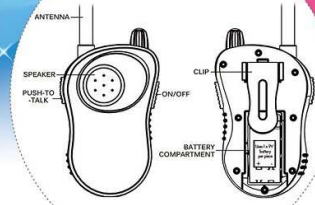
WARNING:
CHOKING HAZARD Small parts.
Not for children under 3 years.



Disney

WALKIE TALKIES

Securely Talk With Your Friends
Requires 2 "9V" Batteries
(not included)
Better for Outdoor use
Working Distance:
100-120 Feet (30.5M - 36.5M)
in Open Area With New Batteries



Warning: Changes or modifications to this unit not expressly approved by the party responsible for compliance could void the user's authority to operate the equipment.

- NOTE: This equipment has been tested and found to comply with the limits for a Class B digital device, pursuant to Part 15 of the FCC Rules. These limits are designed to provide reasonable protection against harmful interference in a residential installation. This equipment generates, uses and can radiate radio frequency energy and, if not installed and used in accordance with the instructions, may cause harmful interference to radio communications.

However, there is no guarantee that interference will not occur in a particular installation.

If this equipment does cause harmful interference

to radio or television reception, which can be determined by turning the equipment off and on, the user is encouraged to try to correct the

interference by one or more of the following measures:

- * Reorient or relocate the receiving antenna.
- * Increase the separation between the equipment and receiver.
- * Connect the equipment into an outlet on a circuit different from that to which the receiver is connected.
- * Consult the dealer or an experienced radio/TV technician for help.

- Do not mix old and new batteries.
- Do not mix alkaline, standard (carbon-zinc), or rechargeable batteries.

This device complies with Part 15 of the FCC Rules.

Operation is subject to the following two conditions: (1) this device may not cause harmful interference, and (2) this device must accept any interference received, including interference that may cause undesired operation.

DISTRIBUTED BY:
WALGREEN CO.
200 WILMOT RD., DEERFIELD, IL 60015
XXXXXX SHANTOU, CHINA



Customer Service USA:
1.844.809.9030

©Disney
www.DisneyPrincess.com

DUE TO CONTINUOUS IMPROVEMENT, SPECIFICATIONS, COLORS, CONTENTS MAY VARY FROM PHOTO.

MADE IN CHINA