



1. Electrical Parameters

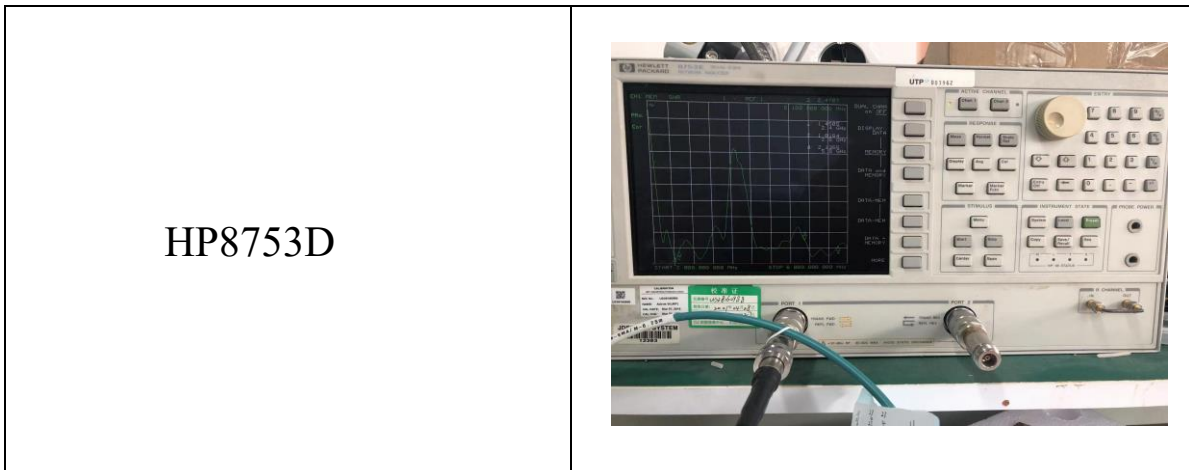
| | |
|---|----------------------------|
| Frequency Range | 2.4~2.4835GHz/5.15~5.85GHz |
| Characteristic Impedance | 50Ω |
| Voltage Standing Wave Ratio (VSWR) | ≤2.0 |
| Insulation Resistance | ≥5000MΩ |
| Dielectric Withstand Voltage | ≥1500V |
| Insertion Loss | ≤2dB |
| Storage Temperature | -20°C~+65°C |
| Operating Temperature | -20°C~+65°C |

2. Sample Test report

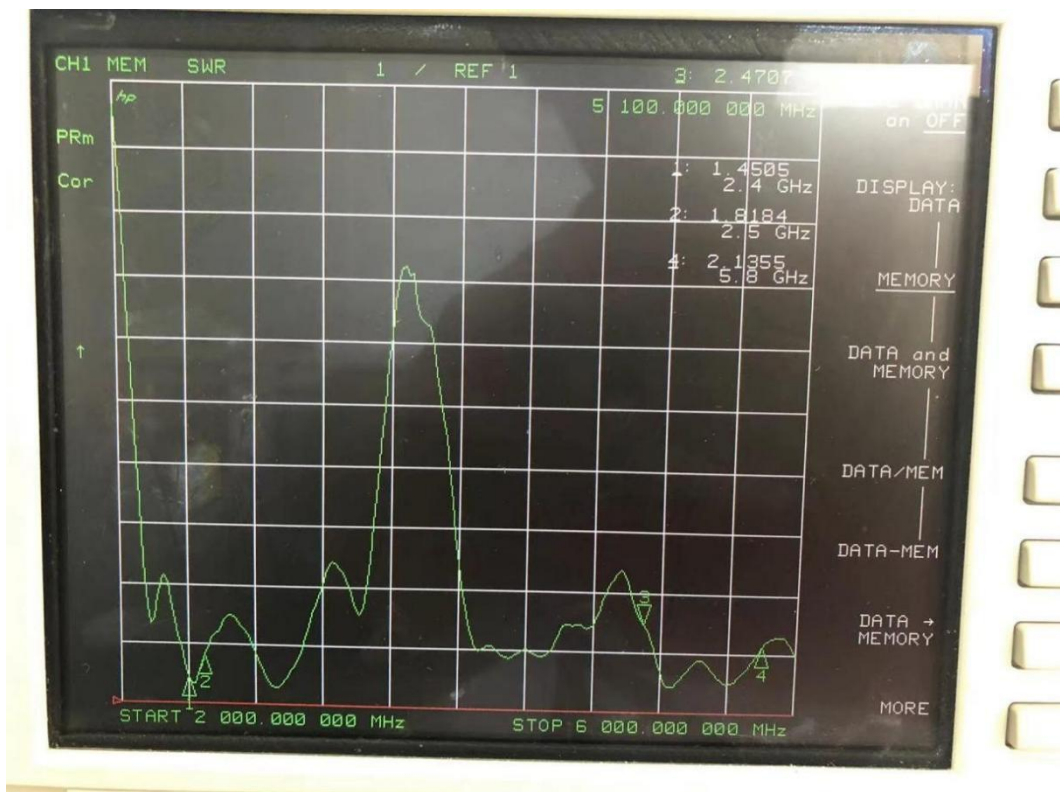
| Item | Test Item | Standard value | NO 1 | NO2 | NO3 | NO4 | NO5 |
|------|----------------|----------------|------|------|------|------|------|
| 1 | SMR | ≤2.0 | 1.75 | 1.89 | 1.88 | 1.74 | 1.85 |
| 2 | Impedance Test | 50Ω ±10 | 49 | 50 | 47 | 43 | 45 |



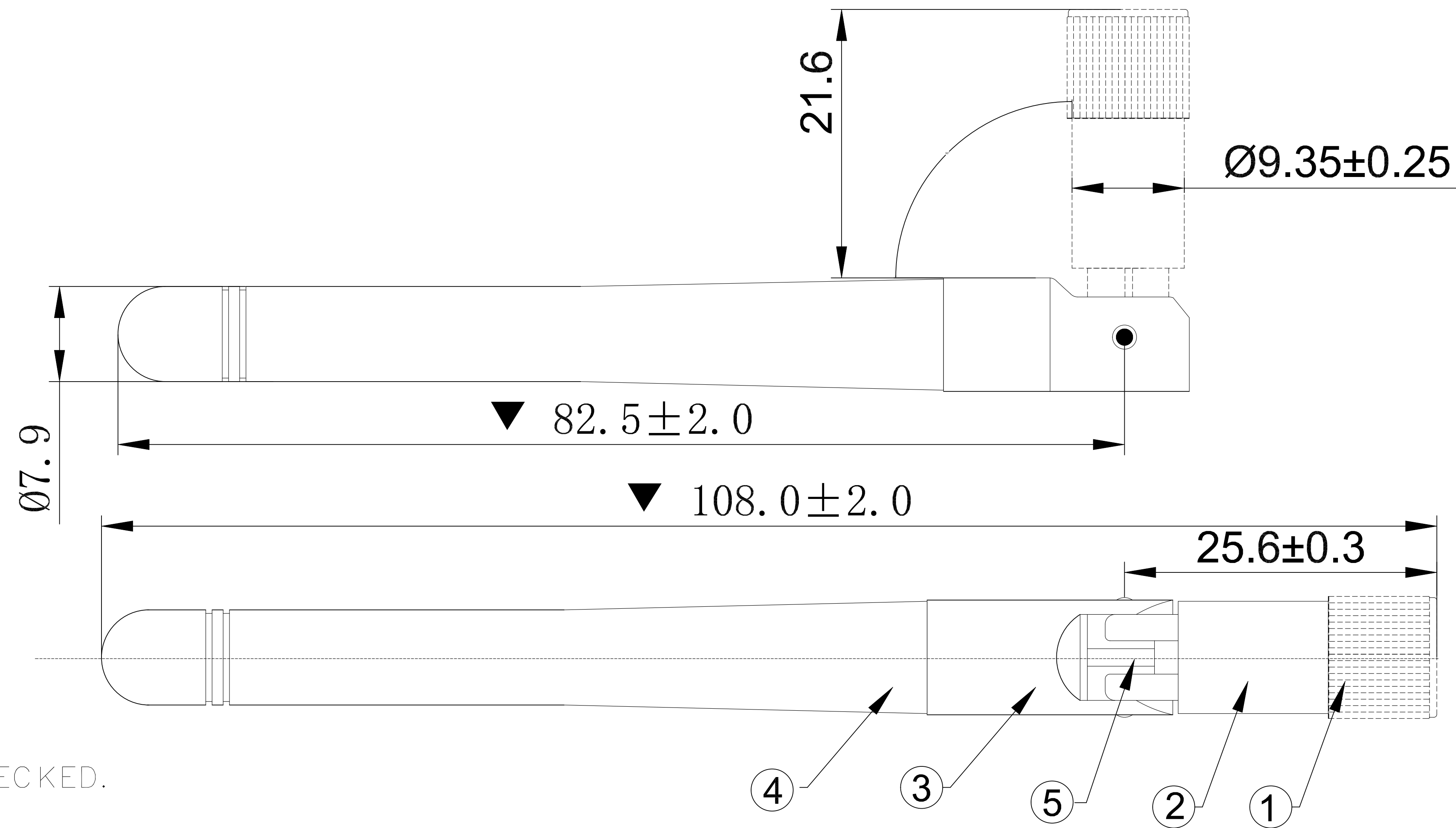
3. Antenna performance testing



SWR Data



| | | | |
|-----------|--------------------------------|------------|-------|
| Reversion | Engineering Change Description | Date | Owner |
| A0 | New Release | 2021-01-13 | Kevin |



NOTES:
1. DIMENSIONS MARKED "▼" SHALL BE CHECKED.

2. Electrical:

- 1.1 Impedance: 50 OHMs.
- 1.2 Frequency: 2.4GHz~2.5/5.15~5.85GHz
- 1.3 VSWR: <=2.0
- 1.4 Peak Gain: 2.0dBi
- 1.5 Polarization: Linear
- 1.6 Radiation Patten: Omni-directional

3. Enviromental:

- 2.1 Storage Temperature Range: -20 TO +65°C
- 2.2 Operating Temperature Range: -20 TO +65°C

4. HARMFUL MATERIAL AND PROCESS CONTROL ,PLEASE FOLLOW ROHS

| NO. | NAME | MATERIAL DESCRIPTION | Q'TY | UNIT |
|-------------------|------|---------------------------|------|------|
| ⑤ | 同轴电缆 | 50Ω.透明棕 OD=1.8 芯线编织镀银 | 65 | mm |
| ④ | 杆套 | 2DB杆套 OD*L=9.35*67.5mm 黑色 | 1 | PCS |
| ③ | 上固定座 | OD*L=9.35*28.8mm 黑色 | 1 | PCS |
| ② | 下固定座 | 接SMA式 OD*L=9.35*19.7mm 黑色 | 1 | PCS |
| ① | SMA | | 1 | PCS |
| PARTS LIST | | | | |

| Tolerance | | | | | SPEC. CLASS | CAD GENERATED DRAWING, DO NOT MANUALLY UPDATE | | | |
|-----------|------------|------|------|-----------|---------------|---|--|--|--|
| A | B | C | D | APPROVALS | | | | | |
| < 8mm | 0.05 | 0.1 | 0.1 | 0.2 | DRAWN Kevin | | | | |
| 8~25mm | 0.08 | 0.15 | 0.15 | 0.3 | | | | | |
| 25~80mm | 0.12 | 0.2 | 0.25 | 0.4 | CHECKED | | | | |
| 80~250mm | 0.25 | 0.3 | 0.4 | 0.6 | | | | | |
| ANGLE | 0.5 | | | | RESP ENG | | | | |
| MATERIAL | As mension | | | | QUAL ENG | | | | |
| FINISH | -- | | | | Scale : 1 : 1 | | | | |

东莞立盛兴电子科技有限公司

TITLE:

P/N: 80000010783

Customew P/N:

| | | | |
|-----------|----------|--------------|------|
| SIZE A4 | DWG. NO. | DATE: | REV. |
| CAD FILE: | | SHEET 1 OF 1 | |



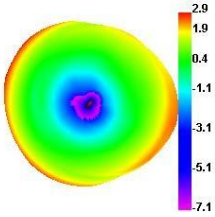
4. OTA Data

| Freq (MHz) | Effi (%) | Gain (dBi) | Freq (MHz) | Effi (%) | Gain (dBi) |
|---------------|-------------|---------------|---------------|-------------|---------------|
| 2400 | 74.97 | 2.91 | 5150 | 40.66 | 0.38 |
| 2410 | 70.86 | 2.52 | 5200 | 42.48 | 0.71 |
| 2420 | 78.65 | 3.01 | 5250 | 47.88 | 1.32 |
| 2430 | 78.79 | 3 | 5300 | 47.08 | 0.99 |
| 2440 | 81.68 | 3.09 | 5350 | 58.64 | 2.08 |
| 2450 | 87.04 | 3.22 | 5400 | 65.71 | 2.4 |
| 2460 | 85.91 | 2.88 | 5450 | 62.77 | 2.21 |
| 2470 | 84.91 | 2.71 | 5500 | 67.7 | 2.29 |
| 2480 | 84.82 | 2.59 | 5550 | 73.22 | 2.54 |
| 2490 | 91.33 | 2.87 | 5600 | 84.81 | 3.27 |
| 2500 | 88.32 | 2.82 | 5650 | 87.79 | 3.52 |
| | | | 5700 | 72.96 | 2.8 |
| | | | 5750 | 80.9 | 3.29 |
| | | | 5800 | 77.12 | 2.98 |
| | | | 5850 | 85.77 | 3.59 |

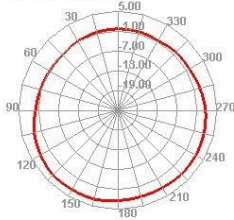


2.4~2.4835GHz

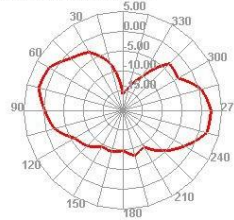
2400.000MHz



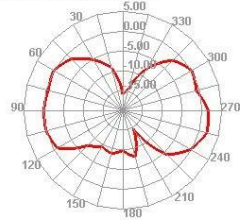
2400.000MHz H



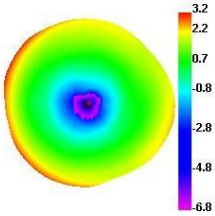
2400.000MHz E1



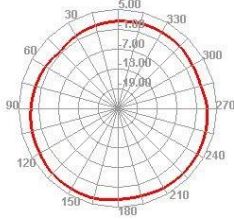
2400.000MHz E2



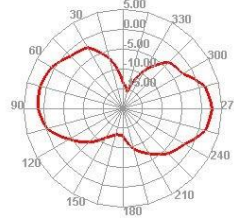
2450.000MHz



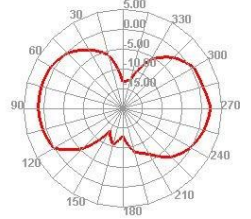
2450.000MHz H



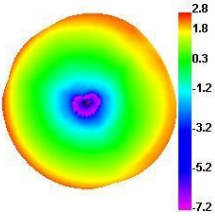
2450.000MHz E1



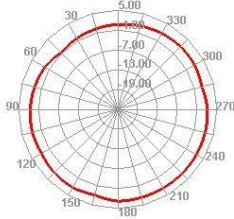
2450.000MHz E2



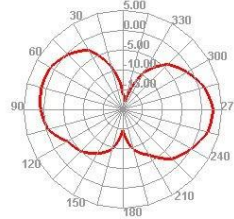
2500.000MHz



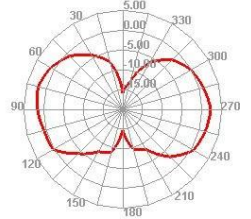
2500.000MHz H



2500.000MHz E1



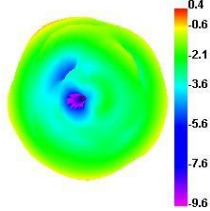
2500.000MHz E2



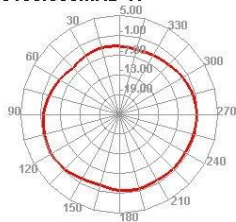


5.15~5.85GHz

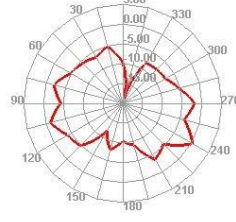
5150.000MHz



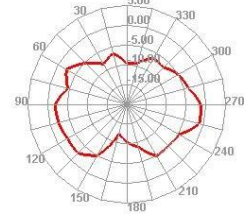
5150.000MHz H



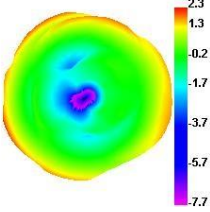
5150.000MHz E1



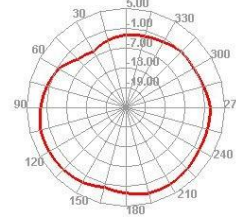
5150.000MHz E2



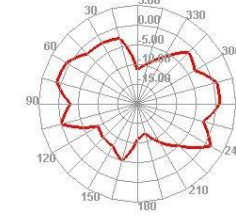
5500.000MHz



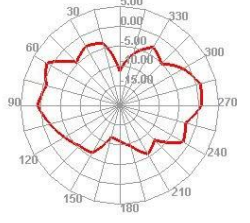
5500.000MHz H



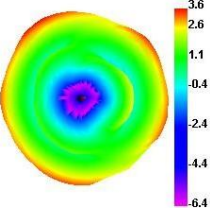
5500.000MHz E1



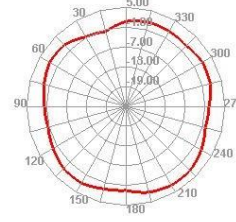
5500.000MHz E2



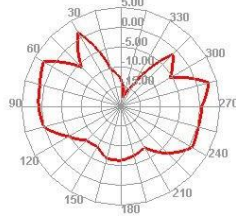
5850.000MHz



5850.000MHz H



5850.000MHz E1



5850.000MHz E2

