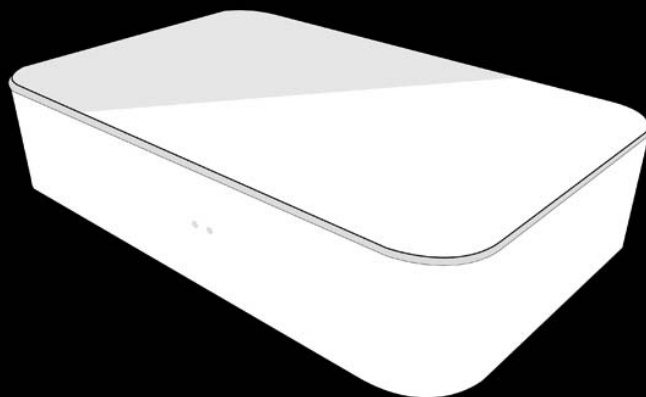


# Let's get started!



## INTRODUCTION

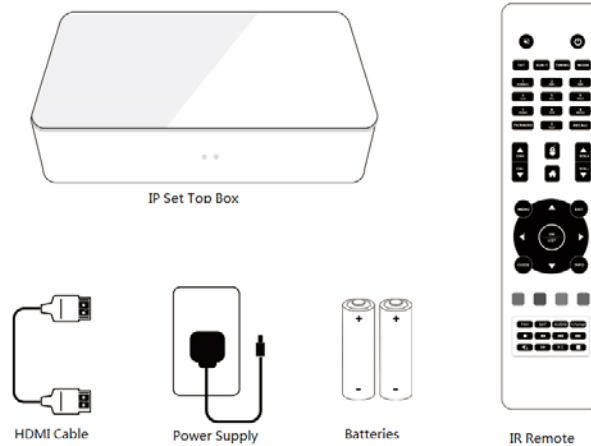
Congratulations on you purchasing the GoNowTV! You are now a member of the GoNowTV family! This unit is among the latest generation of media players on the market. This device enhances your TV viewing experience in more ways than the power of online content and media streaming in your hands. There's no need to buy a SMART TV to enjoy the great things it has to offer. This device will transform any ordinary TV into something even better than a SMART TV. By connecting to your TV via HDMI,GoNowTV turns your TV into a multifunctional online streamer along with providing endless hours of fun with loaded features such as Gaming, Networking, Social Media and much ,much more...It is truly a complementary and trendsetting entertainment system for your enjoyment.

Now that we talked the talk, let's walk the walk ...LET'S GET STARTED !

## Get to know your **GoNowTV**

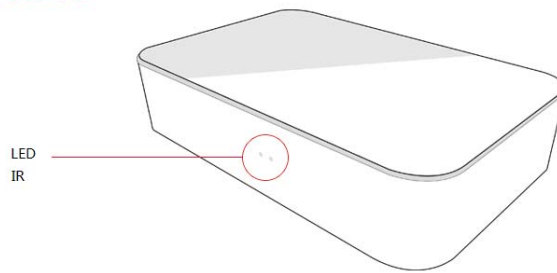
Warming: Depending on specific accessories needed for various markets, some pictures may vary from the actual product you receive

### What's in the box

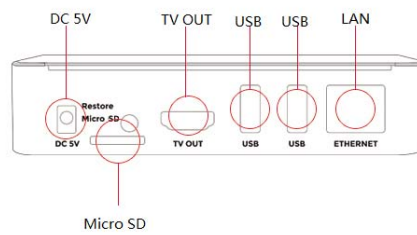


# Get to know your **GoNowTV**

## Front View



## Back View



LED - When the power is turned on, it will shine.

IR- IR sensor for your IR remote control.

Restore Button - When the box has some not boot up issue, it could be used to do the factory reset.

Micro SD - Back Micro SD card slot (up to 32GB) for your media or storage purpose.

TV OUT - HDMI 1.4 supported output, connects to your TV with the HDMI cable(included).

USB - 2 × “USB 2.0” ports for plugging in your external hardware such as Gyro Motion remotes, hard drivers, external media,etc...

ETHERNET - 10/100 LAN port, connects to your Internet via an Ethernet cable (not included).

DC 5V - DC 5V input port for plugging in your cable from your AC adapter(included).

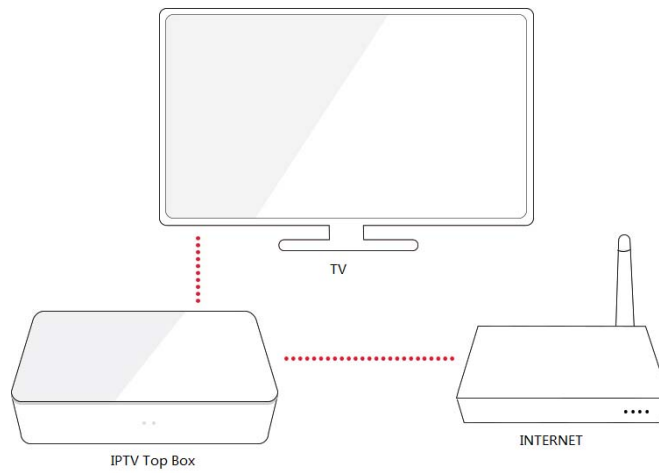
## **Ready for the step-by-step? We've only got four...**

### **Step 1**

#### **Connect your box**

-To connect your device to your TV, please follow this simple diagram.

-Connecting to the LAN port is optional if you are using WIFI to connect to the Internet.



## Step 2

### Remote control

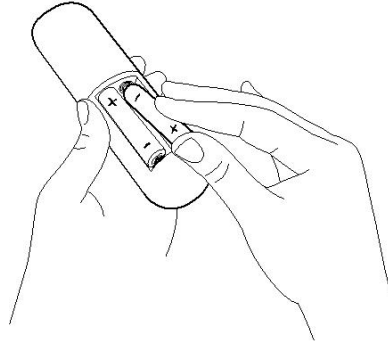
This section explains how to properly use your remote control for your GoNowTV.

#### -Remove battery cover

Your GoNowTV remote comes with a CR battery (small, round, flat battery) already installed, to activate the batteries, please remove the small plastic cover on the bottom of the remote by pulling on it.

-Inserting new batteries

To replace your remote control batteries, please remove the bottom cover and make sure you put the new batteries in the correct orientation before closing the cover.



**Power tip!** Always replace dead batteries with two brand-new batteries from the same manufacturer. Never use damaged batteries. If your remote gets warm/hot during use, discontinue use and please contact us.

Next, power on your IPTV Set Top box by connecting it to a wall outlet using the included power adapter.

Finally, power on your TV and look for a GoNowTV message to fill the screen.

**Blank screen?** If your TV does not display a GoNowTV screen, make sure your TV input matches the physical connection used to connect your IPTV Set Top Box. press the Input button (sometimes called Source) on your TV or TV remote to cycle through the various video inputs available until you see a GoNowTV screen.

## Step 3

### Configure your network

Step 3 establishes your network connection and brings out your inner geek. You can do it! Just choose either wireless or wired and read on for instructions:

**WiFi:** If you use a WiFi, you can grab that IR remote and jump right into Guided Setup. Select “WiFi” as your network connection and have your network name and password ready. Then, select your network from the list of available networks, enter your network password, if you use one. Remember, network passwords are case sensitive.

**Ethernet:** If you use a Ethernet, this step is simple. Just connect one end to the Ethernet port on the back of your box, connect the other end to an open Ethernet port on your router.

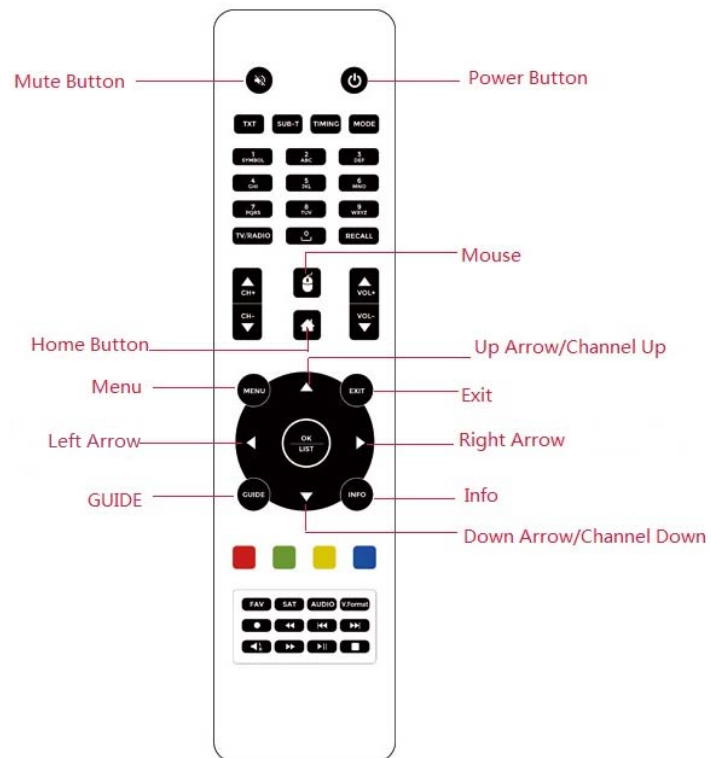
## Step 4

### Complete setup your APP

It's the final stretch and hooray—it's a breeze! Please set up your APP. Congratulations! Continue using that IR remote, which you can learn more about on the following pages, to personalize your channel line-up, stream movies or play games. The fun part has just begun, we promise.

# Get to know your remote control!

Please look this map:





# Trouble shooting

Having trouble completing Guided Setup? Don't worry: It's usually an easy fix.

## If you cannot see a picture on your TV:

- Make sure your TV is turned on. (This tip could save you some embarrassment.)
- Make sure the connectors on the cables between your IPTV Set Top Box and your TV or home theater receiver are pushed in all the way.
- Make sure the video input on your TV or home theater receiver is set to match the output used with the IPTV Set Top Box. Most TVs have an Input button on the remote control to change video inputs.
- Make sure the power cable for the IPTV Set Top Box is connected snugly to the player on one end and to a working power source on the other end. If the player is powered, the status light on the front of the unit will be on.
- If you are using HDMI with a home theater receiver, make sure the HDMI cable from your player is connected to an TV OUT port on your receiver and the HDMI cable from an TV OUT port on your receiver is connected to your TV.

## If you cannot connect to your wireless home network during guided setup:

- If you are not getting 3 or more signal-strength bars above your wireless network, adjust the location of your box and/or wireless router.
- Make sure there are no obstructions, like cement walls, between your box and your wireless router.

- Make sure you select “Ethernet” and not “WiFi” on the “Network connection selection” screen.
- Make sure you select the correct wireless router name on the “Choose wireless network” screen.
- Make sure you input the correct password, if your network is security-enabled (password is case sensitive).
- If you have turned off WiFi Hot spot on your wireless router, you can add your network by selecting “My network is not shown” from the “Select wireless network” screen.

**If you can't hear sound:**

- Make sure the connectors on the cables between your box and your TV or home theater receiver are pushed in all the way.
- Make sure the volume on your TV or home theater receiver is turned up and isn't on mute.
- If you connected your box to a home theater receiver, make sure your receiver is turned on.
- Make sure the input on your TV or home theater receiver matches the output (TV OUT or analog audio) used with your box.

**If the IR remote control isn't functioning:**

- Try moving closer to your IPTV Set Top Box.
- Make sure the batteries are working and inserted properly.

**Tips on battery replacement:**

- Always replace batteries together as a pair. Make sure they are from the same manufacturer. Insert the negative (-) side first.

## Additional hardware

If you wish to buy additional hardware and accessories to be used with your GoNowTV device we strongly suggest buying original hardware. Please ask your local dealer.

## FCC STATEMENT :

**This device complies with Part 15 of the FCC Rules. Operation is subject to the following two conditions:**

- (1) This device may not cause harmful interference, and
- (2) This device must accept any interference received, including interference that may cause undesired operation.

**Warning:** Changes or modifications not expressly approved by the party responsible for compliance could void the user's authority to operate the equipment.

**NOTE:** This equipment has been tested and found to comply with the limits for a Class B digital device, pursuant to Part 15 of the FCC Rules. These limits are designed to provide reasonable protection against harmful interference in a residential installation. This equipment generates uses and can radiate radio frequency energy and, if not installed and used in accordance with the instructions, may cause harmful interference to radio communications. However, there is no guarantee that interference will not occur in a particular installation. If this equipment does cause harmful interference to radio or television reception, which can be

determined by turning the equipment off and on, the user is encouraged to try to correct the interference by one or more of the following measures:

- Reorient or relocate the receiving antenna.

- Increase the separation between the equipment and receiver.

- Connect the equipment into an outlet on a circuit different from that to which the receiver is connected.

- Consult the dealer or an experienced radio/TV technician for help.

## **FCC Radiation Exposure Statement:**

This equipment complies with FCC radiation exposure limits set forth for an uncontrolled environment. This equipment should be installed and operated with minimum distance 20cm between the radiator & your body.

**THANKS**