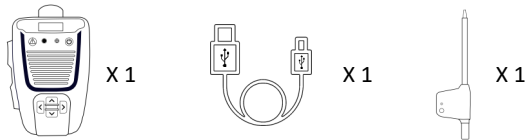


AINA Kepler

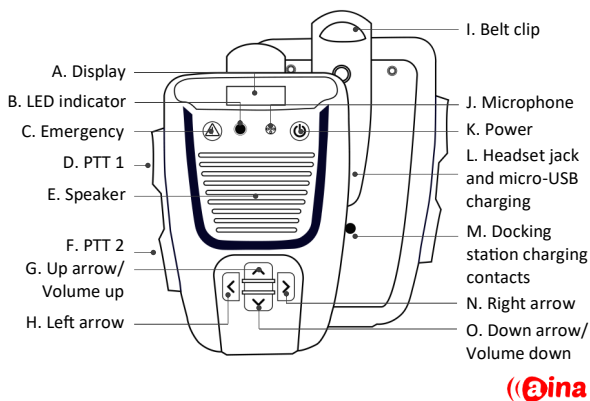
QUICK GUIDE

AINA Wireless
DOC ID : X ver. 1.2.

INCLUDED IN THE PACKAGE



BUTTONS AND CONNECTIONS



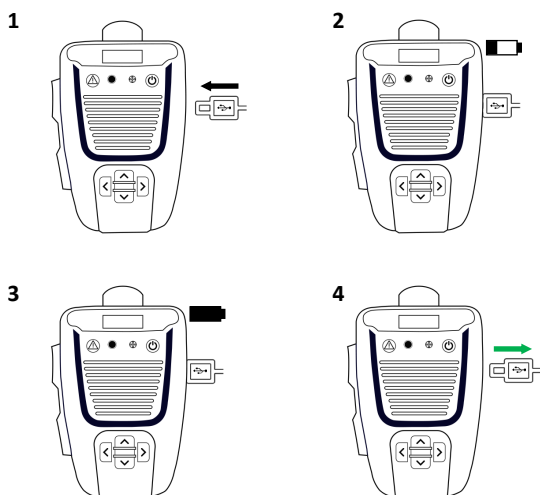
BUTTON FUNCTIONS

- Press until the green LED turns off to turn the device on or off. While the device is off, pressing the button will show the battery level. When the device is on, it will open or close the device's menu.
- Press for 3 seconds to active or cancel an emergency call.
- During operation, the up and down arrow buttons are for volume control. While the device is on the menu screen, the up and down arrow can be used for selection.
- During operation, pressing the left or right arrow will change the PTT1 group. Pressing the left or right arrow for 3 seconds will change the PTT2 group. While the device is on the menu screen, the left and right arrow can be used for selection.

ICONS

- Battery status. When there is an exclamation mark (!) above the icon, the battery is in critical level.
- Network strength.
- Connected to the service.
- Disconnected from the service.
- GPS positioning on.
- Headphones connected.

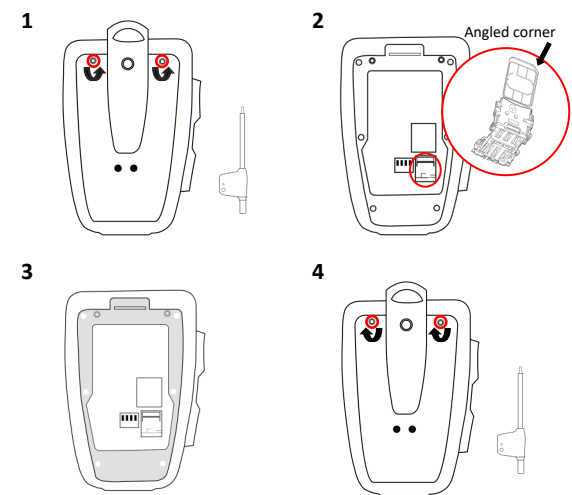
CHARGING THE BATTERY



- EN** 1. Connect the provided USB cable to the device and wall charger. 2. The display will show the battery level for 10 seconds. 3. Wait until the device is fully charged. 4. Disconnect the USB cable.

NOTE! Recommended wall charger rating: 2A.

INSERTING THE SIM CARD



- EN** 1. Turn off the device and open battery cover with the provided screwdriver and remove the device's battery. 2. Slide the SIM card holder downward, lift the holder into an upright position and slide the SIM card into the holder. Make sure the SIM card's gold contacts will face into the device and the angled corner of the card is positioned correctly (as shown in the picture above). Set back down the SIM card holder and slide it upwards to secure it (the SIM card should be lying flat on the device). 3. Make sure the inside of the device is clear of any dust and dirt, specially the grey area shown above, to ensure the watertightness of the device.

4. Insert the battery back into the device so that the battery contacts align and the battery label faces into the device. Then slide the battery cover back into place and screw it shut. Do not over tighten.

NOTE 1! You will need a nano-SIM card. NOTE 2! The screwdriver head size is TX6.

POWER ON / OFF

ON



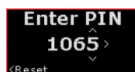
OFF



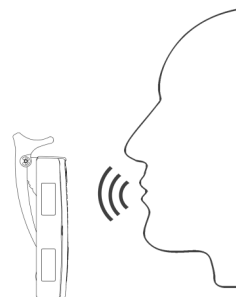
EN Turn on by pressing the Power button until the green LED turns off. Turn off by pressing the Power button until the AINA logo appears on the display.

NOTE! Pressing the Power button for longer than 7 seconds, will restart the device. This should only be used if the device is unresponsive.

We recommend getting a nano SIM-card which has the PIN lock feature deactivated. If it is activated, you will need to insert your PIN when turning on the device by scrolling through the numbers using the up and down arrow buttons, and confirming by pressing the right arrow button. Once you have inserted your complete PIN number, press the right arrow button for 3 seconds to confirm.



MICROPHONE PERFORMANCE TIP



EN For best result hold the device 15-20cm from your mouth when speaking.

SAFETY

1. Do not put the device near your ear, SPL > 100dBA.
2. Avoid contact with magnetic stripe cards.
3. Charging temperature: 0°C - + 45°C.
4. Operation temperature: -10°C - + 60°C.



Frequency	Output power
WCDMA B1,B8	25dBm
LTE B1/3/7/8/20/28/38/40	25dBm
ISM 2.4GHz	20dBm
NFC 13.56MHz	-

OPERATION

For more detailed instructions on setting up and using your Kepler, please refer to the User Manual, available online at www.ainaptt.com

CUSTOMER CARE

If any part of the equipment is damaged on arrival, contact the shipper to conduct an inspection and prepare a damage report. Save the shipping container and all packing materials until the inspection and the damage report are completed.

In addition, contact the Customer Care to make arrangements for replacement equipment. Do not return any part of the shipment until you receive detailed instructions from an AINA Wireless representative.

Product warranty information can be found from:
www.ainaptt.com/terms-and-conditions

Contact Customer Care at:

Phone Number: + 358 40 322 6717
E-mail: support@ainaptt.com

LEGAL GUIDELINES

AINA Wireless Inc. (AINA Wireless Finland Oy) is continuously evaluating technical publications that have been produced for completeness and technical accuracy. You can assist us in this process by submitting your comments and suggestions to the following address:

AINA Wireless Finland Oy
Joensuunkatu 7G
24100 Salo
Finland

Or email us to sales@ainaptt.com

ACKNOWLEDGEMENTS

The software contained in this device is copyrighted by AINA Wireless. Unpublished rights are reserved under the copyright laws of the United States.

CREDITS

AINA™ is a registered trademark and is of AINA Wireless Inc.


The N-Mark is a trademark or registered trademark of NFC Forum, Inc. in the United States and in other countries

Bluetooth® is a registered trademark of Bluetooth SIG, Inc.

Apple®, iTunes®, iPhone®, and iPad® are registered trademarks of Apple Inc.

iOS™ is a trademark or registered trademark of Cisco in the U.S. and other countries and is used under license.

Google® is a registered trademark of Google Inc. Android™, Google Maps™, Google Earth™, Google Play™, and Gmail™ are trademarks of Google Inc.

BC-mark is registered trademark of California Energy Commission. 

All brand and product names are trademarks, registered trademarks, or service marks of their respective holders.

DECLARATION OF CONFORMITY

The material contained herein is subject to U.S. export approval. No export or re-export is permitted without written approval from the U.S. Government. Rated: EAR99 in accordance with U.S. Dept. of Commerce regulations 15CFR774, Export Administration Regulations.

Repairs to this equipment should be made only by an authorized service technician or facility designated by the supplier. The opening of the device's back cover or any repairs, alterations or substitution of parts made to this equipment not approved by the manufacturer will void the user's authority to operate the equipment in addition to the manufacturer's warranty.

This product conforms to the European Union WEEE Directive 2012/19/EU. Do not dispose of this product in a public landfill or open fire. Take it to a recycling center at the end of its life.

Hereby, AINA Wireless Finland Oy declares that the radio equipment type AKEPLER-0001-00 is in compliance with Directive 2014/53/EU.

The full text of the EU declaration of conformity is available at the following internet address: www.ainaptt.com/certifications/

- Reorient or relocate the receiving antenna.
- Increase the separation between the equipment and receiver.
- Connect the equipment into an outlet on a circuit different from that to which the receiver is connected.
- Consult the dealer or an experienced radio/TV technician for help.

Operation is subject to the following two conditions:

1. this device may not cause interference and
2. this device must accept any interference, including interference that may cause undesired operation of the device.

FCC RF Radiation Exposure Statement:

This equipment complies with FCC radiation exposure limits set forth for an uncontrolled environment. End users must follow the specific operating instructions for satisfying RF exposure compliance. This transmitter must not be co-located or operating in conjunction with any other antenna or transmitter.

Industry Canada

This device complies with Industry Canada license-exempt RSS standard(s). Operation is subject to the following two conditions: (1) this device may not cause interference, and (2) this device must accept any interference, including interference that may cause undesired operation of the device.

SAFETY CONVENTIONS

The following conventions are used throughout this manual to alert the user to general safety precautions that must be observed during all phases of operation, service, and repair of this product. Failure to comply with these precautions or with specific warning elsewhere in this manual violates safety standards of design, manufacture, and intended use of the product. AINA Wireless assumes no liability for the customer's failure to comply with these standards.

REGULATORY

FCC Part 15

15.21

You are cautioned that changes or modifications not expressly approved by the part responsible for compliance could void the user's authority to operate the equipment.

15.105(b)

This equipment has been tested and found to comply with the limits for a Class B digital device, pursuant to part 15 of the FCC rules. These limits are designed to provide reasonable protection against harmful interference in a residential installation. This equipment generates, uses and can radiate radio frequency energy and, if not installed and used in accordance with the instructions, may cause harmful interference to radio communications. However, there is no guarantee that interference will not occur in a particular installation. If this equipment does cause harmful interference to radio or television reception, which can be determined by turning the equipment off and on, the user is encouraged to try to correct the interference by one or more of the following measures:

Le présent appareil est conforme aux CNR d'Industrie Canada applicables aux appareils radio exempts de licence. L'exploitation est autorisée aux deux conditions suivantes : (1) l'appareil ne doit pas produire de brouillage, et (2) l'utilisateur de l'appareil doit accepter tout brouillage radioélectrique subi, même si le brouillage est susceptible d'en compromettre le fonctionnement.

WASTE (DISPOSAL) OF YOUR ELECTRONIC AND ELECTRIC EQUIPMENT

European Union (EU) Waste of Electrical and Electronic Equipment (WEEE) directive.

The European Union's WEEE directive requires that products sold into EU countries must have the crossed-out wheellie bin label on the product (or the package in some cases). As defined by the WEEE directive, this crossed-out wheellie bin label means that customers and end-users in EU countries should not dispose of electronic and electrical equipment or accessories as household waste. Customers or end-users in EU countries should contact their local equipment supplier or service centre for information on the waste collection system in their country.



This manual is published by AINA Wireless Inc. without any warranty. Improvements and changes to this manual necessitated by typographical errors, inaccuracies of current information, or improvements to programs and/or equipment, may be made by AINA Wireless Inc. at any time and without notice. Such changes will be incorporated into new editions of this manual. No part of this manual may be reproduced or transmitted in any form or by any means, electronic or mechanical, including photocopying and recording, for any purpose, without the express written permission of AINA Wireless Inc.