

VPC2100WI Local View Operating Instructions

Local viewing monitor through Mobile phone (Android system)

1. Ensure that the camera is connected to the power supply, install the antenna.
2. Using mobile phone search WIFI hotspot, find out WIFI CAMERA, see figure 1.
3. Connect to WIFI(password is 12345678), mobile phone and camera composition WLAN. see figure 2.

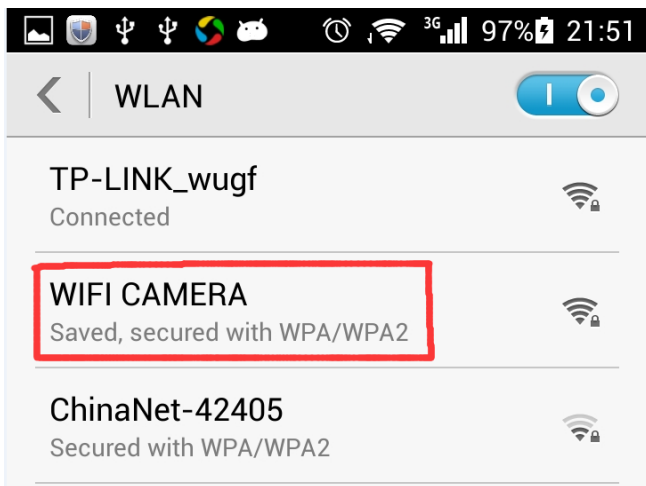


Figure 1

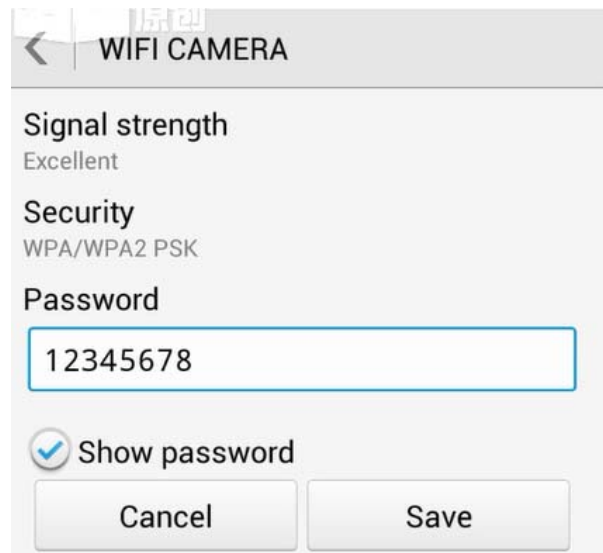


Figure 2

4. Installed APP on your phone, the name of the application is vMEyeSuper, as shown in Figure 3.
5. Open the application vMEyeSuper, interface shown in Figure 4.



Figure 3

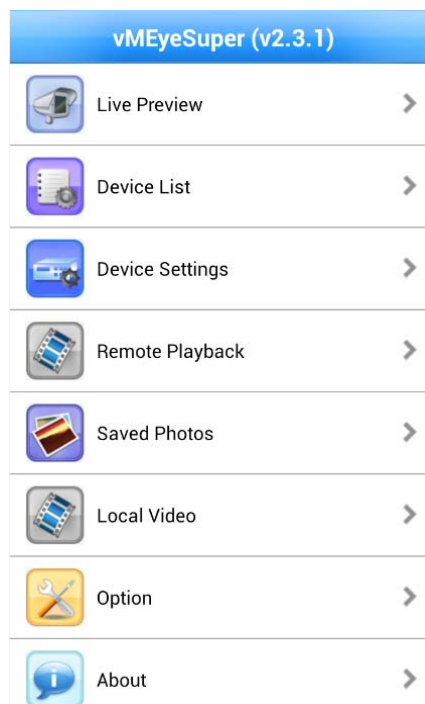


Figure 4

6. Click on the device list, enter Figure 5.
7. Click on Search, you can find the camera, as in Figure 6.



Figure 5 shows the 'Device Detail' form. At the top, there are three buttons: 'Back', 'Search' (highlighted with a red box), and 'Ok'. The form contains the following fields:

- DeviceName: My DVR01
- Connection: IP/Domain (dropdown menu)
- IP/Domain: (empty text box)
- TCP Port: 34567
- User Name: admin
- Password: (empty text box)
- Max Channel: Radio buttons for 1, 4, 8, 16, and 32. The '4' button is selected.

Figure 5

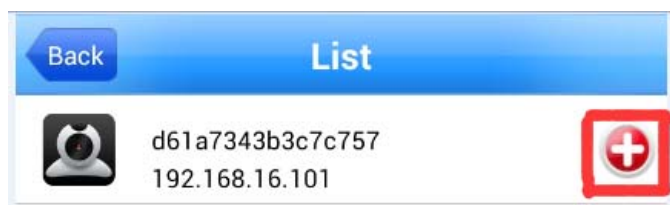


Figure 6 shows the 'List' screen. At the top, there are two buttons: 'Back' and 'List'. Below the header, there is a list item with a camera icon, the text 'd61a7343b3c7c757' and '192.168.16.101', and a red square button with a white plus sign.

Figure 6

8. Click + to add equipment, number of channels, a single camera to select 1 channel, click on the OK button, as in Figures 7 and 8.

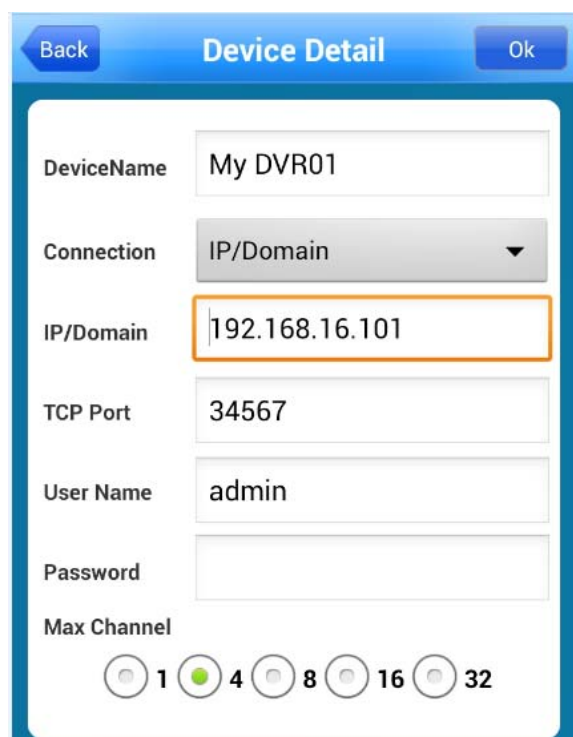


Figure 7 shows the 'Device Detail' form. At the top, there are three buttons: 'Back', 'Device Detail', and 'Ok'. The form contains the following fields:

- DeviceName: My DVR01
- Connection: IP/Domain (dropdown menu)
- IP/Domain: 192.168.16.101 (text box)
- TCP Port: 34567
- User Name: admin
- Password: (empty text box)
- Max Channel: Radio buttons for 1, 4, 8, 16, and 32. The '4' button is selected.

Figure 7



Figure 8 shows the 'List' screen. At the top, there are two buttons: 'Back' and 'List'. Below the header, there is a list item with a camera icon, the text 'd61a7343b3c7c757' and '192.168.16.101', and a green checkmark icon. Two yellow callout boxes point to the text: 'Device IP address' points to '192.168.16.101' and 'Device serial number' points to 'd61a7343b3c7c757'.

Figure 8

9. Select the device and channel to view the real-time monitoring, video, photographs and other operations, as in Figures 9 and 10.

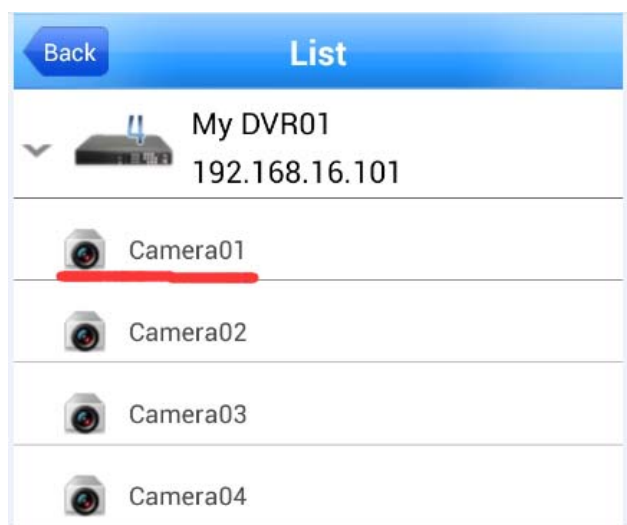


Figure 9

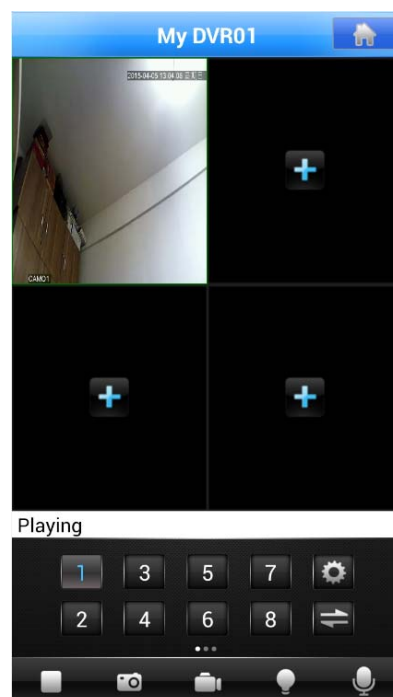


Figure 10

10. Double-click on the monitor screen, full screen view, as shown in Figure 11.

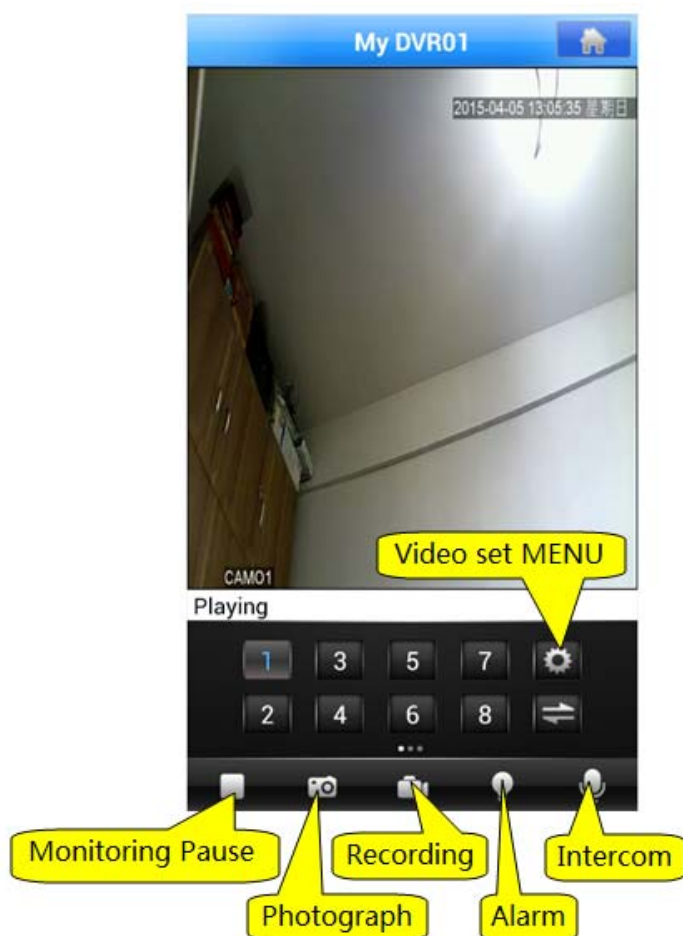


Figure 11

Local viewing monitor through Computer (XP/WIN7 system)

1. Ensure that the camera is connected to the power supply, install the antenna.
2. Connect the camera to your computer with network cable, or connect your computer to camera WIFI hotspot.
3. Make sure that CMS software is installed on your computer (Software name: General_CMS_V3.1.0.2)
4. Turn on the computer client software CMS, use the default user name + blank password (the default user name may be admin), see figure 1.



Figure 1

5. Then click on the "System button" to open the menu system, see figure 2.

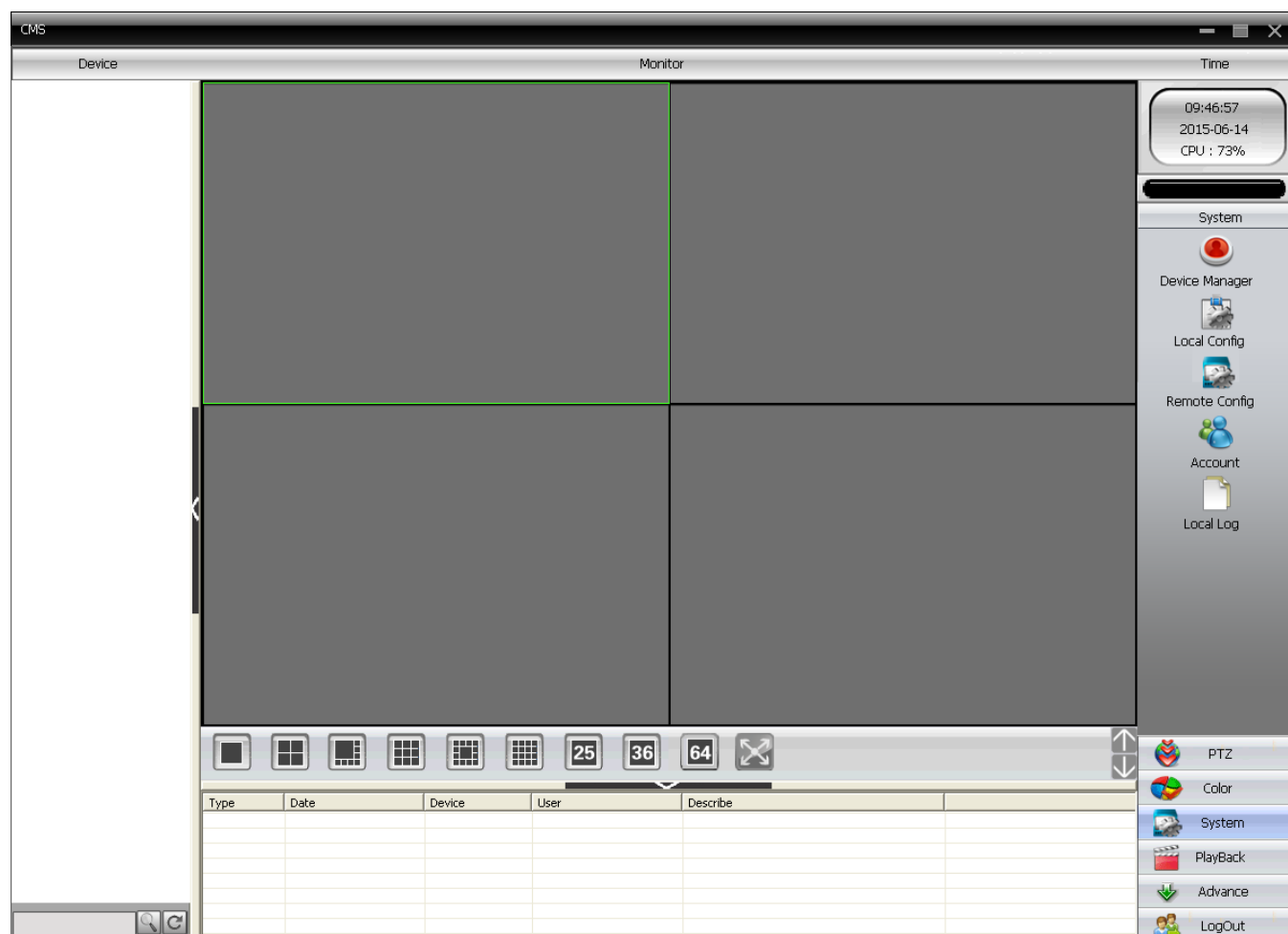


Figure 2

6. Then click "Device Manager" Add Device, see figure 3.

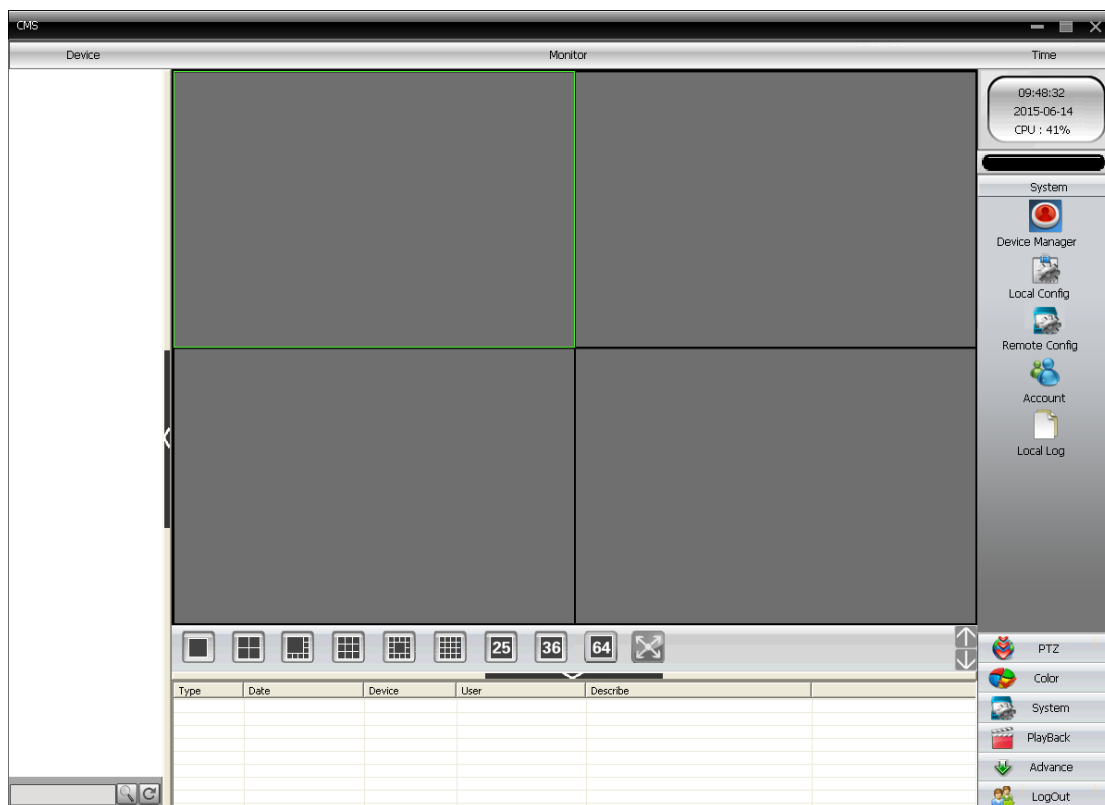


Figure 3

7. Click the "zone list" and then click on the region icon to add monitoring area, see figure 4 and 5.

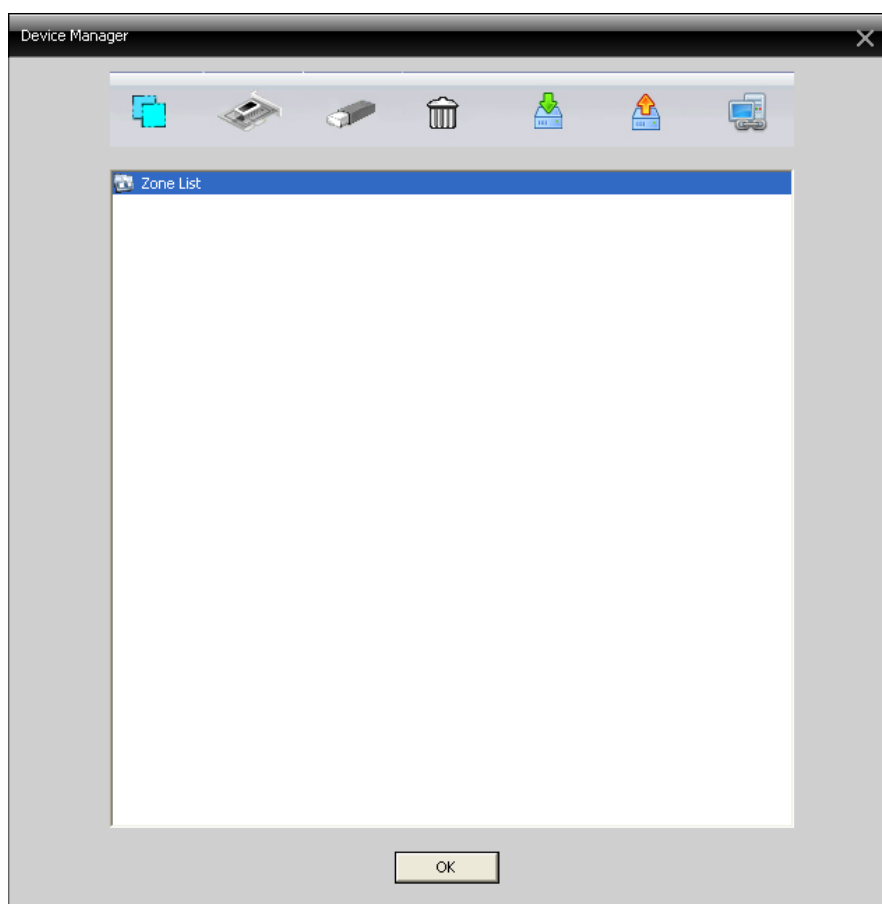


Figure 4

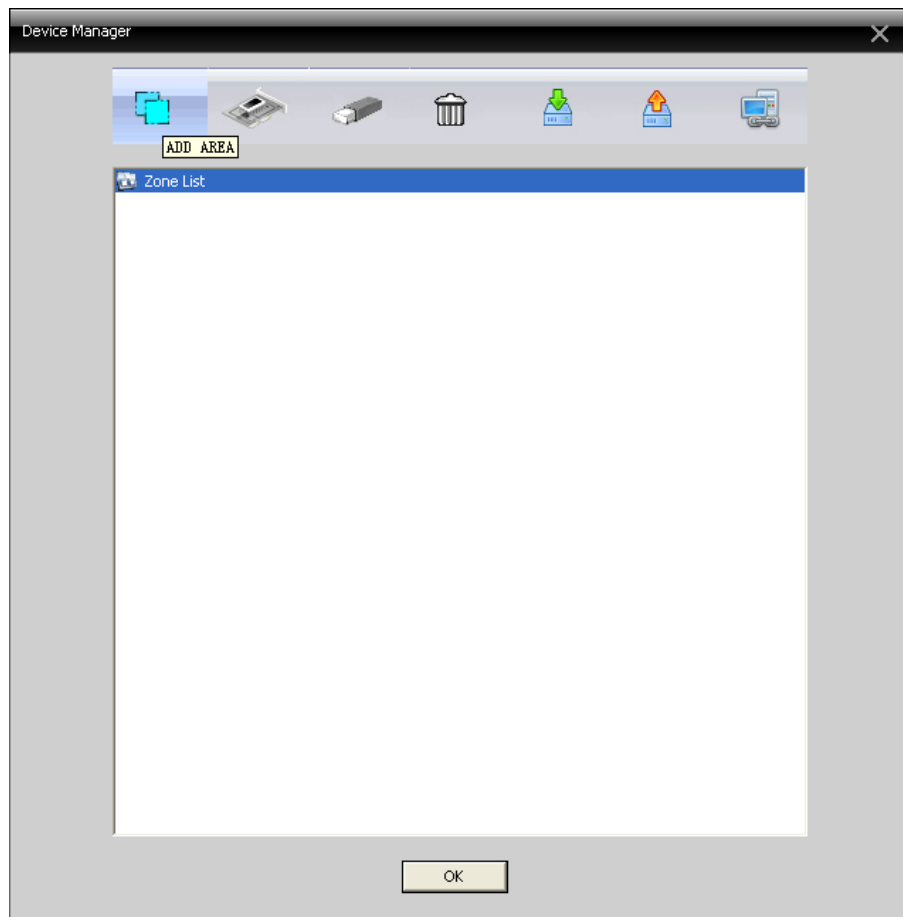


Figure 5

8. In the pop-up menu, fill in the zone name, then confirm, see figure 6.

In the newly added areas Add Device, see figure 7.



Figure 6

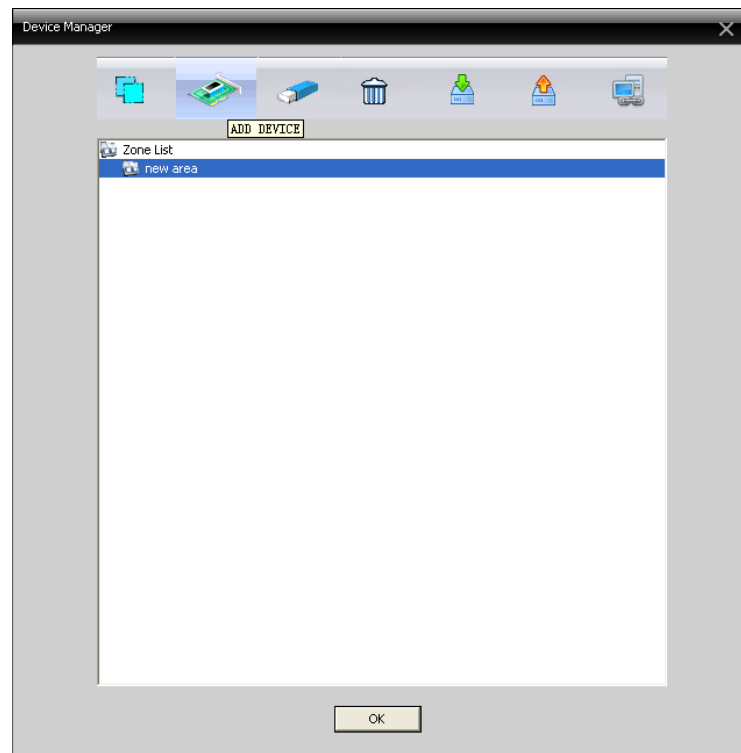


Figure 7

9. Click IP Search, the search to the camera, click the camera IP, and then click Add Device, add cameras, see figure 8.

The screenshot shows a window titled "Edit". At the top, there is a table with the following data:

NO.	IP Address	Port	MAC	Vendor
1	192.168.16.101	34567	00:12:12:66:7e:e1	H264DVR

Below the table are three buttons: "IP Search", "Add Device", and "EditDevice". Under these buttons are several configuration fields:

- Device Name: 192.168.16.101
- LoginType: ☒ IP Address, ☐ Domain, ☐ ARSP, ☐ Cloud
- IP Address: 192 . 168 . 16 . 101
- Port: 34567
- User Name: admin, Password: [empty field]
- Zone: new area
- Vendor: H264DVR (dropdown menu)

At the bottom are "OK" and "Cancel" buttons.

Figure 8

10. Add the camera successfully, you can see the IP address of the camera in the main interface, double-click IP address and then double-click the camera name on it to open the camera, see figure 9.

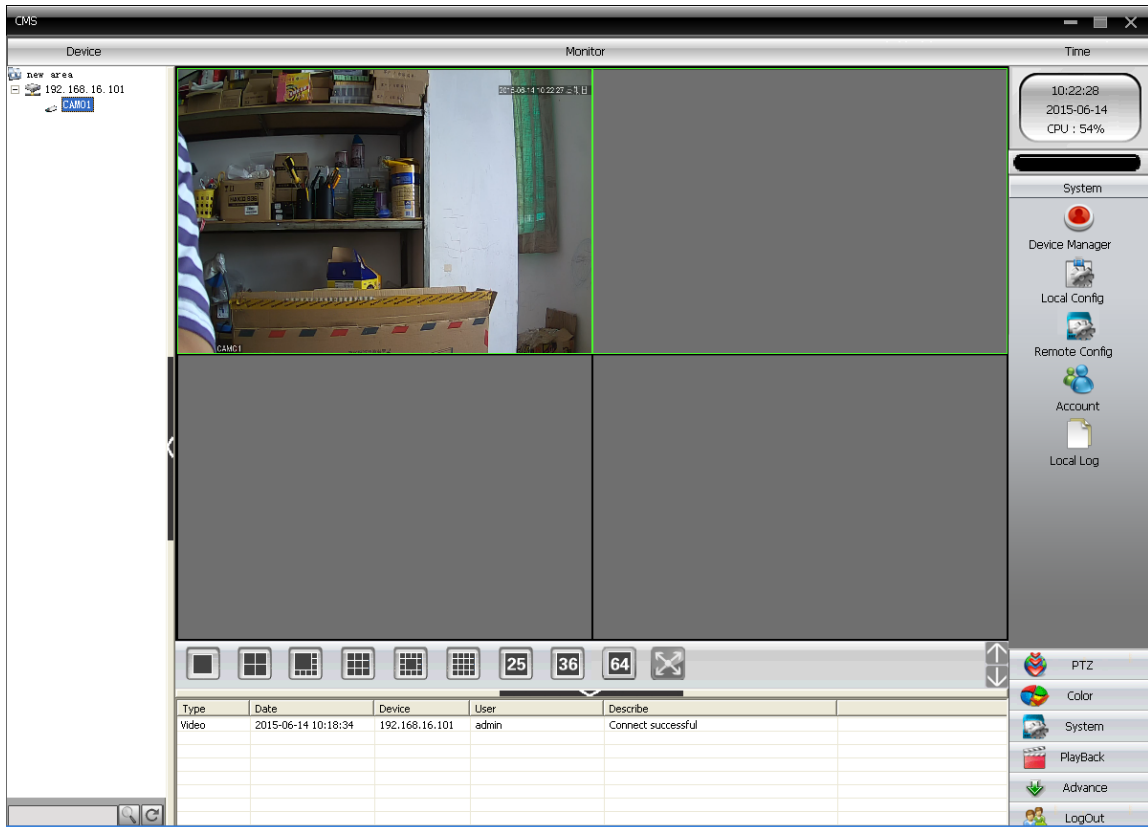


Figure 9

11. Right-click the image on the monitor, open the Device config, see figure 10.

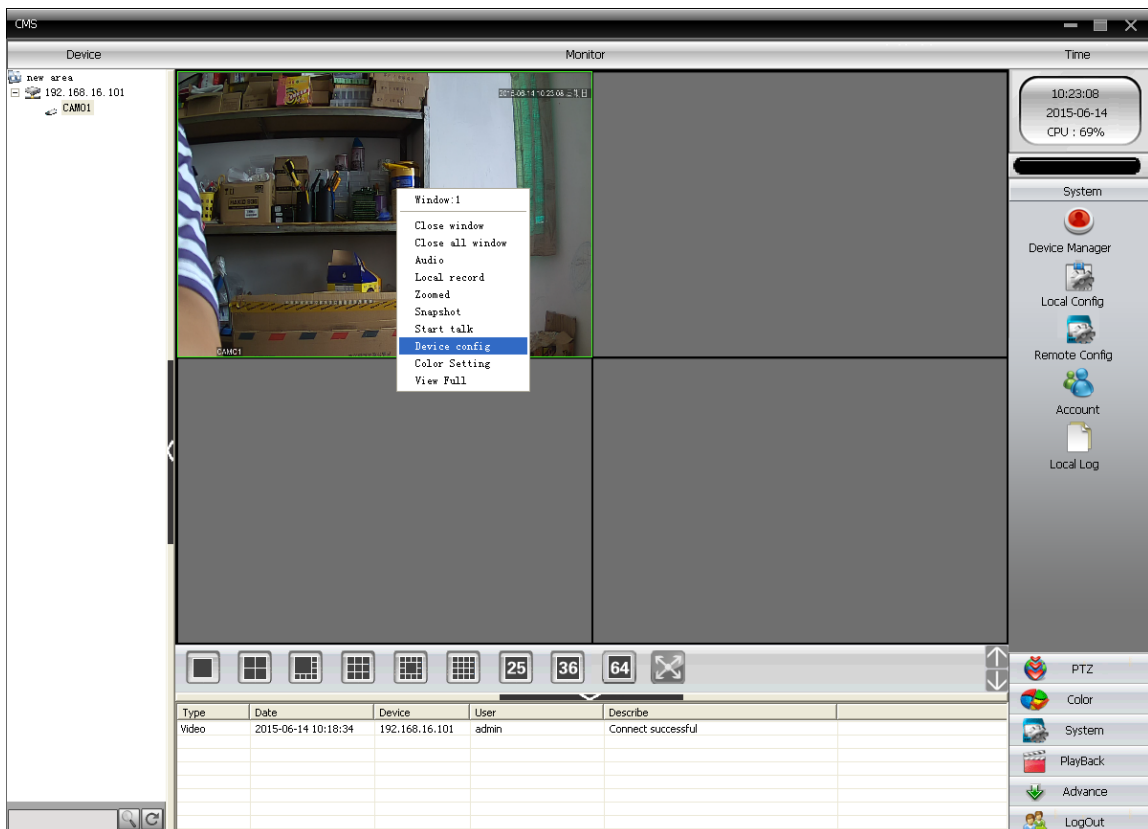


Figure 10

12. In the pop up menu, select INFO icon, then click the version button, see figure 11.

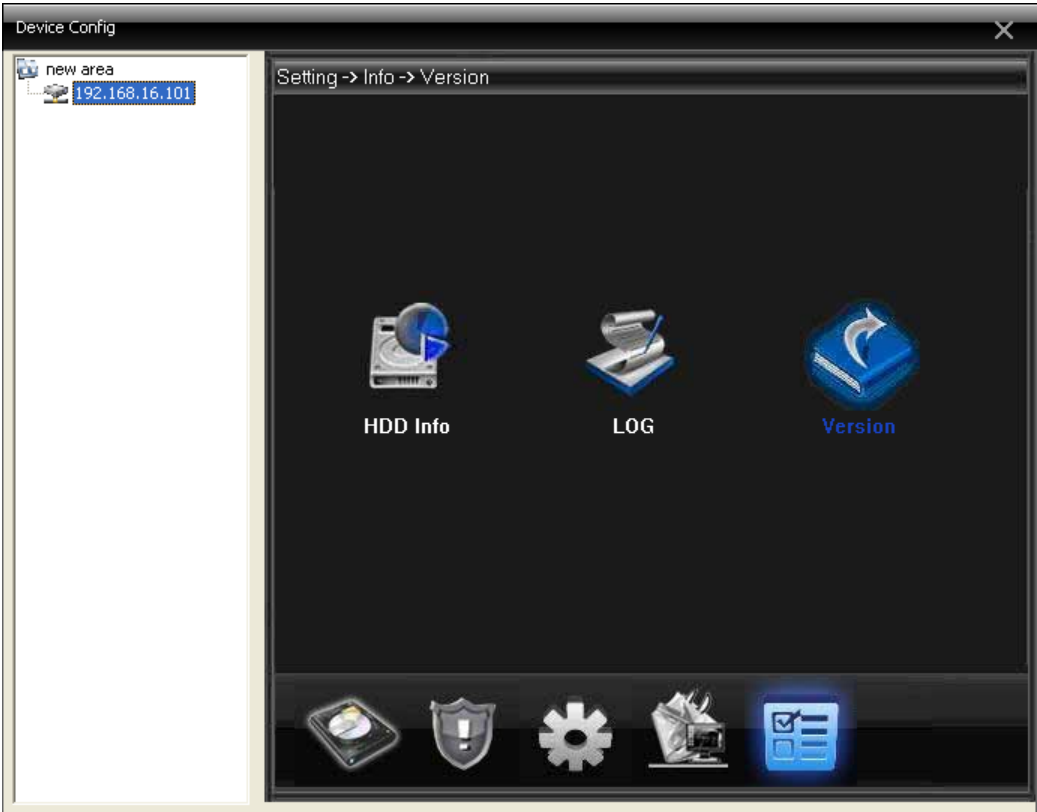


Figure 11

13. In the pop-up menu, you can see the camera's serial number, each camera has only one number, see figure 12.

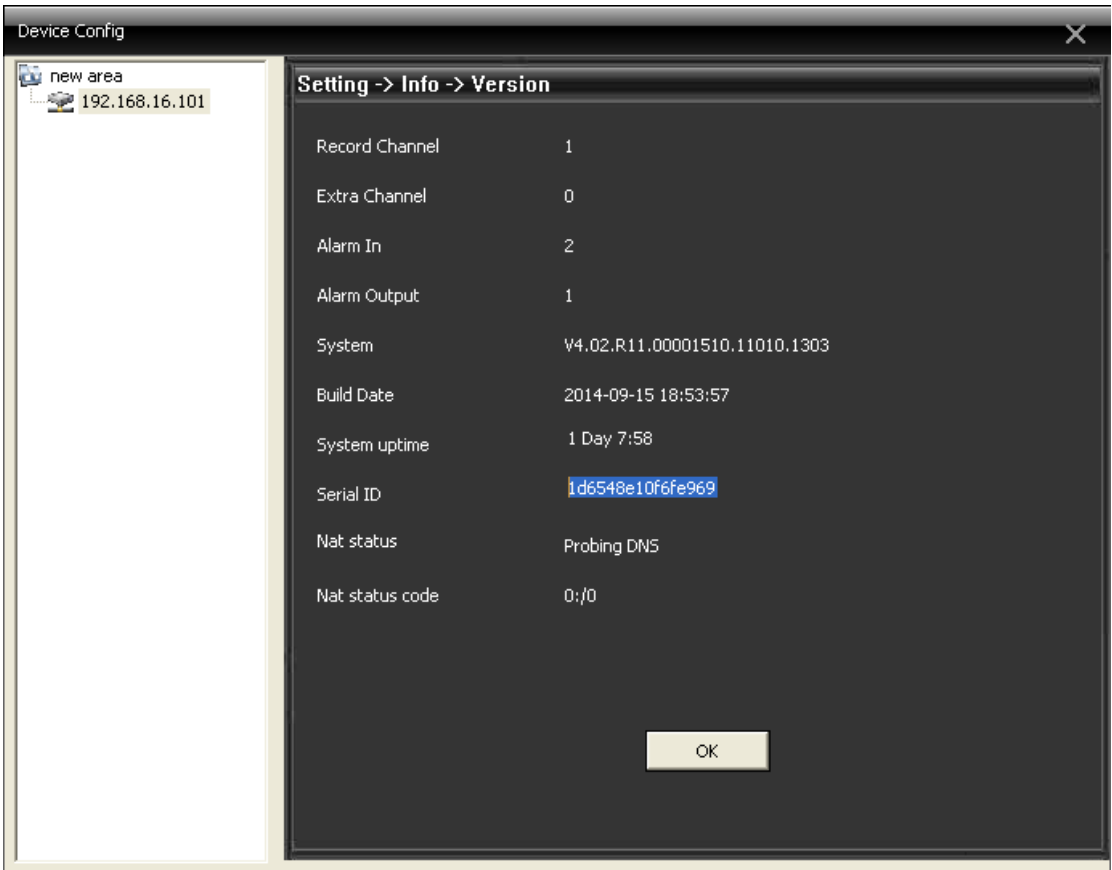


Figure 12

FCC Statement

This equipment has been tested and found to comply with the limits for a Class B digital device, pursuant to part 15 of the FCC rules. These limits are designed to provide reasonable protection against harmful interference in a residential installation. This equipment generates, uses and can radiate radio frequency energy and, if not installed and used in accordance with the instructions, may cause harmful interference to radio communications. However, there is no guarantee that interference will not occur in a particular installation. If this equipment does cause harmful interference to radio or television reception, which can be determined by turning the equipment off and on, the user is encouraged to try to correct the interference by one or more of the following measures:

- Reorient or relocate the receiving antenna.
- Increase the separation between the equipment and receiver.
- Connect the equipment into an outlet on a circuit different from that to which the receiver is connected.
- Consult the dealer or an experienced radio/TV technician for help.

To assure continued compliance, any changes or modifications not expressly approved by the party.

Responsible for compliance could void the user's authority to operate this equipment. (Example- use only shielded interface cables when connecting to computer or peripheral devices).

This equipment complies with Part 15 of the FCC Rules. Operation is subject to the following two conditions:

- (1) This device may not cause harmful interference, and
- (2) This device must accept any interference received, including interference that may cause undesired operation.

FCC Radiation Exposure Statement:

The equipment complies with FCC Radiation exposure limits set forth for uncontrolled environment. This equipment should be installed and operated with minimum distance 20cm between the radiator and your body.