

2.5 Smart Alarm

2.5.1 How To Set Alarm

Park the scooter and press the key. The alarm is now armed. The horn will sound continuously for 15 seconds when the scooter is jostled or touched.

2.5.2 How To Turn Off The Alarm

Simply press the key. This will cancel the alarm.

2.5.3 How To Start the Remote Control

Press the key ⚡ twice.

2.5.4 How To Locate The Scooter

Press the key. The horn will sound 5 times to indicate where the scooter is located. Pressing any key will exit this mode.

2.5.5 Smart Alarm

The scooter sounds will notify the owner to set the alarm after the scooter parked for more than 5 seconds.

2.5.6 How To Adjust The Sensitivity

Park the scooter and press and hold the key until horn sounds continuously. The alarm will cycle through different alarm options release the button once you reach the desired volume.

2.5.7 Anti-Theft Function

If your scooter is stolen while it is in your possession, press and hold the key. This will stop and power off the scooter if it is in the remote working range.

2.6 How To Charge

1. The red indicating light shines when the charger is plugged into an electrical outlet.

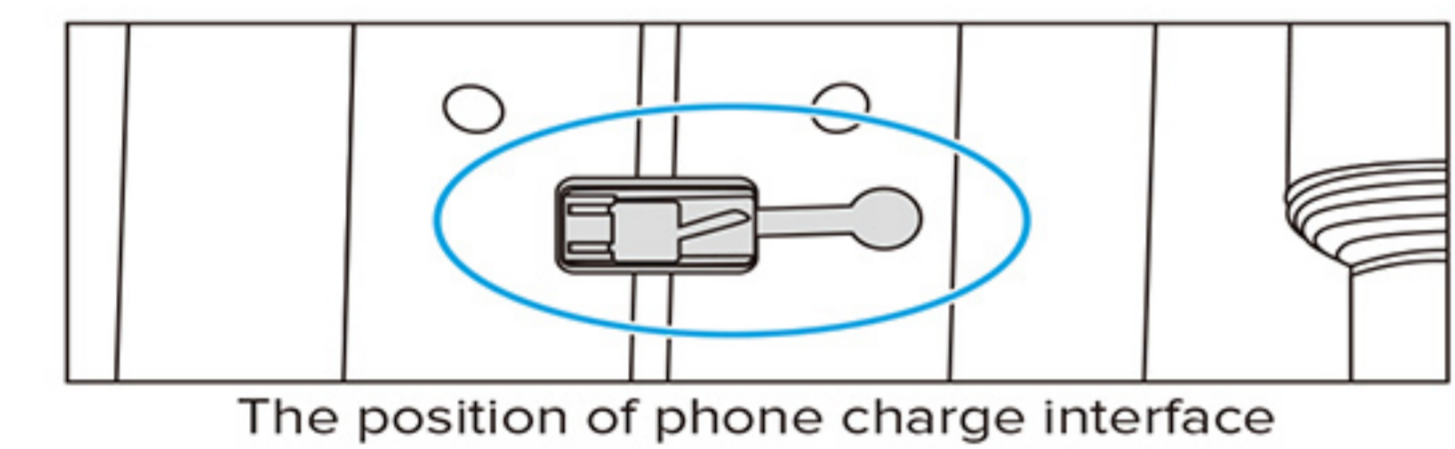


2. Standard charging time : 3-5 hours

3. The charger is equipped with a surge protector. It's recommended to keep the charging current below 3A. Heavy current will damage the protector or shorten the battery's lifespan.

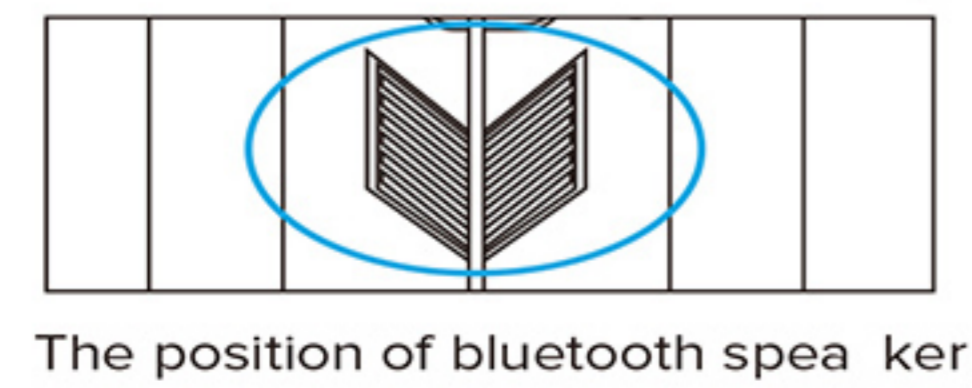
2.7 Charge For Phone or Tablet

The E-scooter is equipped with a USB outlet to charge your phone or tablet on the go.



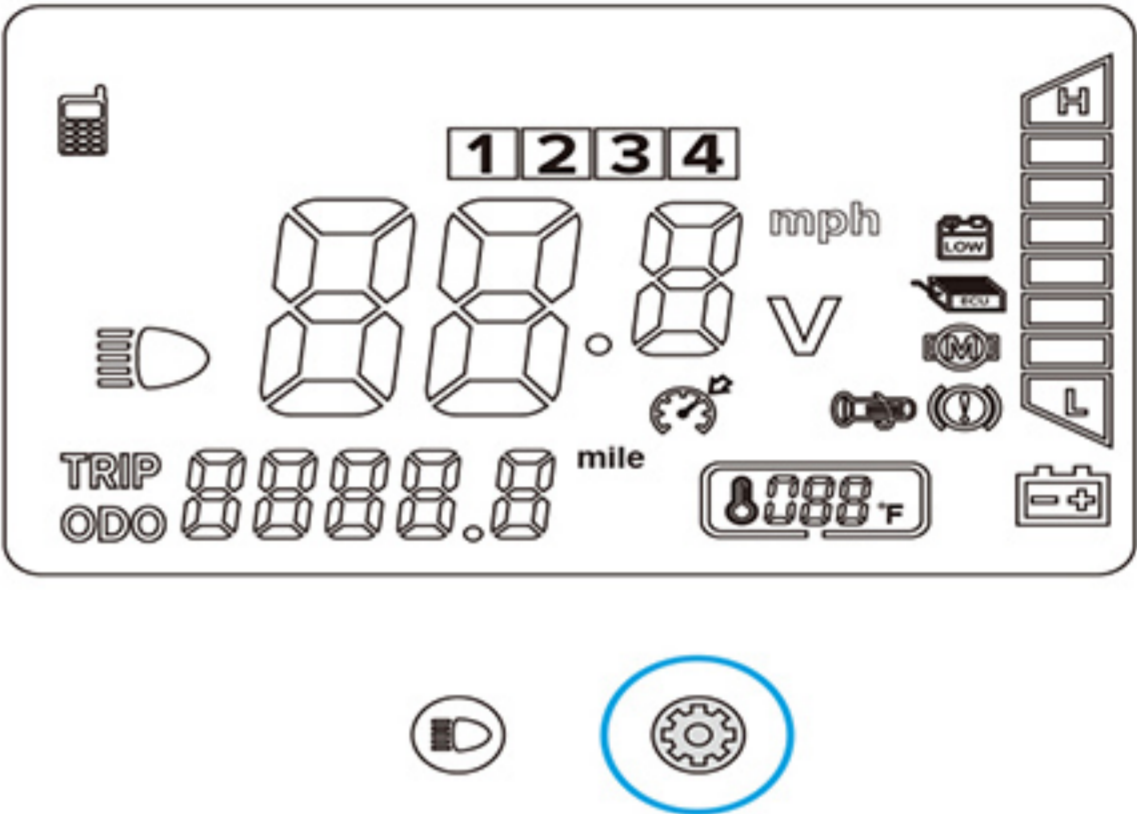
2.8 Bluetooth Speaker

The bluetooth speaker connects to both iOS and Android smart phones. (Only one mobile device can be synced at a time). Optimal working range is 0-8m; up to 5m is recommended for the best quality sound.



2.9 How To Check the Endurance Mileage

- 2.9.1 You can choose 1,2,3 and 4 shift by pressing the button shortly in starting up condition.
- 2.9.2 You can reset the scooter to factory setting by pressing and holding button for about 30 seconds. Once it is reset you will see a new screen.



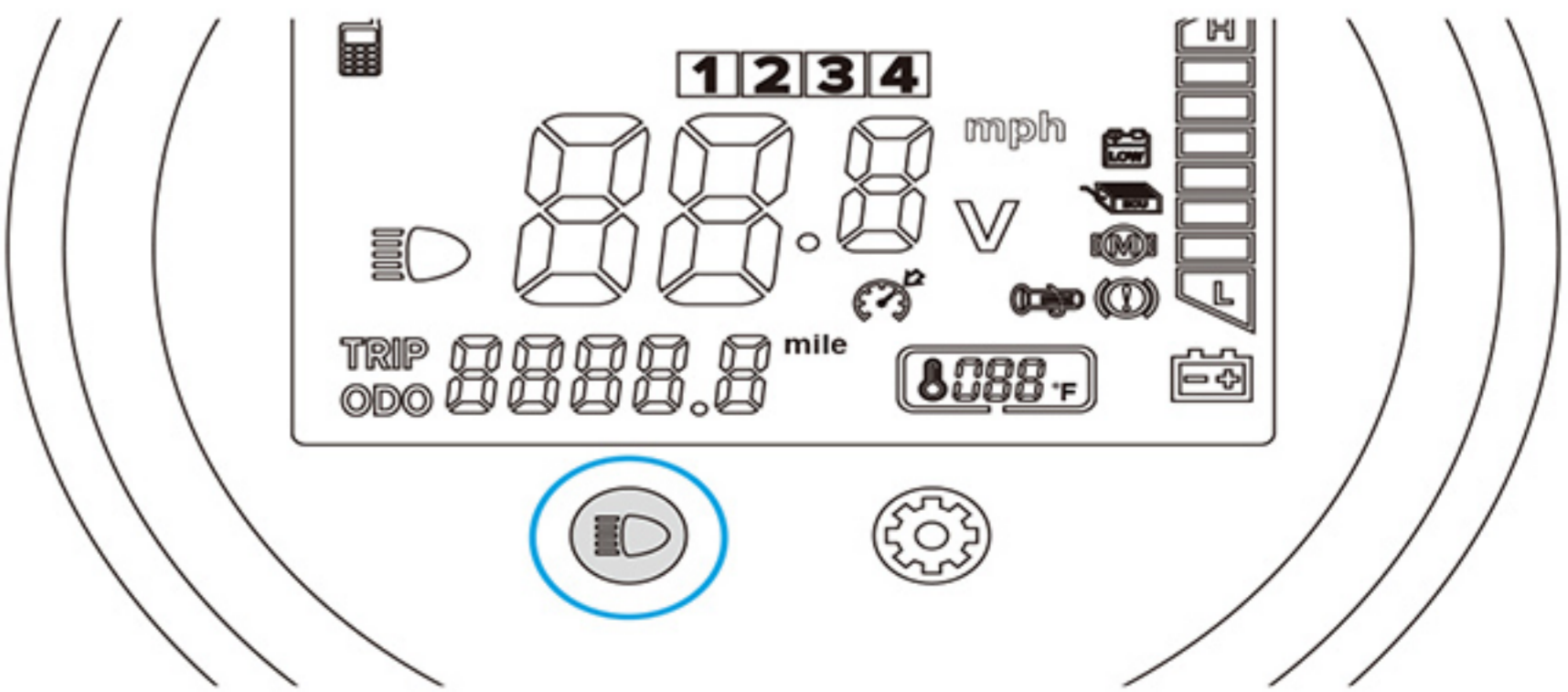
2.10 Cruise Control Setting

2.10.1 Enable the scooter's cruise control to move at a constant speed without having to turn the grip.

Start: Press and hold the "LIGHT" key while driving. Once cruise control is activated the sign will appear.

Stop: Rotate the speed grip, use the brake, or press and hold the "LIGHT" key again.

Take out:
Exiting: Shutdown system or make a brake.



Part Three: Safety Usage

For your safety, please read this section carefully.

3.1 Important Environmental Warnings

1. Maintain a safe speed while driving, especially when riding downhill.
Don't use front brake during high speed driving in order to avoid injury.
2. Don't drive while it is raining or right after it has rained.
3. Don't drive in deep water.
4. Only use authorized chargers and parts while using and servicing your scooter.
5. Don't disassemble or refurbish the scooter. This can lead to damage that may cause injury, and this will void your scooter's warranty. Please ask your local seller or appointed maintenance center for scooter maintenance assistance.

3.2 Charging Safety

1. Charge in a safe place out of children's reach.
2. Charge fully before initially use
3. Use only approved chargers and batteries for your scooter.
4. The charger contains a live circuit when plugged in. Use caution when unplugging.
5. Keep charger away from liquids and metals that may cause damage.
Don't drop or crush the charger to avoid electrical shock and damage.
6. Don't cover your scooter while charging.
7. The charger should be used in dry and well ventilated areas.
8. If your charger becomes too hot or releases an electrical odor, stop charging immediately and contact your local shop for maintenance.

3.3 Battery Safety

1. Keep away from fire and flammable, explosive, and corrosive gases and materials.
2. Don't take out the battery without proper shutdown and care in order to avoid damage.
3. Don't damage the label on battery in order to avoid losing your warranty.
4. Do not use another brand of charger or battery in your scooter to avoid damage.

Part Four: Maintenance

Proper maintenance will decrease the likelihood of damage and prolong the lifespan of your E-scooter.

4.1 Basic Maintenance

- 1. Make sure the gas pressure reaches 280 kpa before using.
- 2. Before storing, fully charge the lithium battery. While in storage charge and discharge fully every two months.
- 3. Your scooter will perform well if you'll charge it everyday. Do not allow the charge to fall below the minimum recommended charge to prolong the battery's life.

4.2 Regular Maintenance And Self-Checking

- 1. Check the scooter regularly to ensure that the screws on the front and back wheels are secure.
- 2. Make sure that the tires are not worn or damaged. While driving, note any noises or deviations from a smooth ride.
- 3. Ensure everything is connected properly. Check the brake cable and test brakes before riding.

4.3 Cleaning

- 1. Do not wash with hose or splash with excess water to avoid damage to your scooter and its electrical parts.
- 2. Use a neutral cleaner that is recommended for lacquer or plastics, and clean the scooter's surface with a cloth only. Wipe it with a dry, soft and clean cloth.
- 3. Do not inject oil into the disc, brake, or rim.

Part Five: After-sales Service

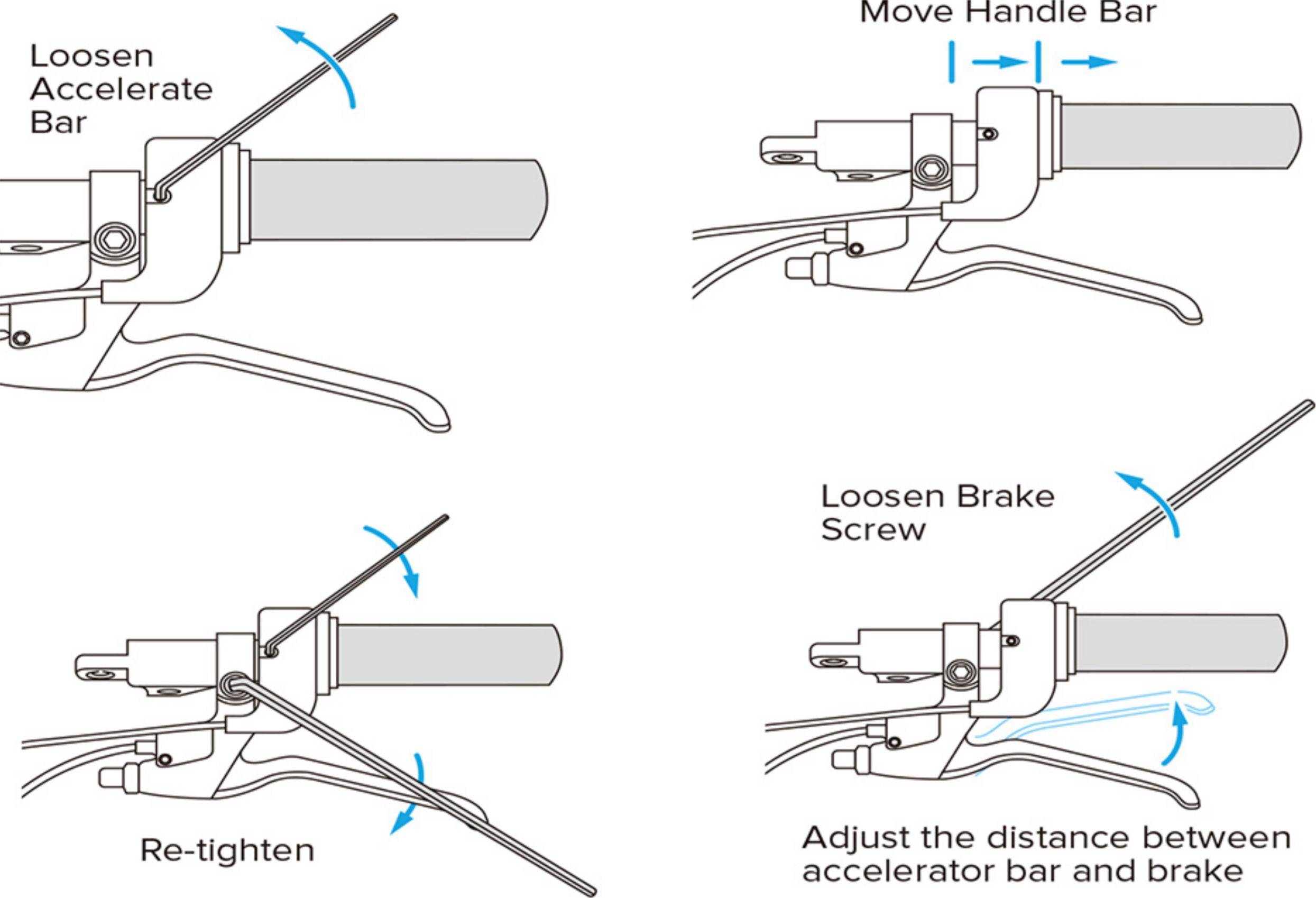
5.1 Rules of warranty

(Company only be responsible for certified battery)

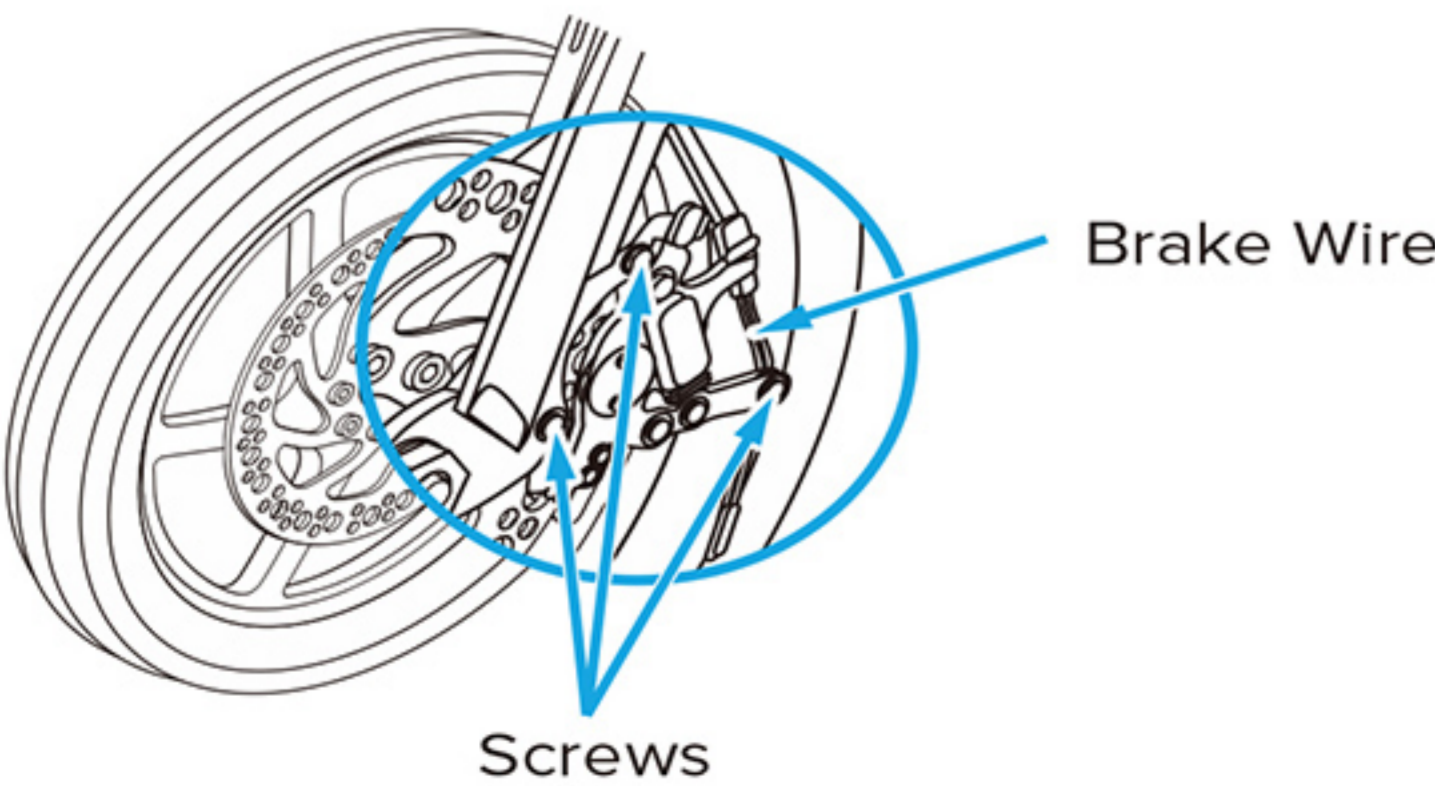
| No. | Description | Warranty period | Specification |
|-----|--|-----------------|---|
| 1 | Motor of back wheel | 12 Months | Full replacement within the first 12 months (3 months turnover period Maintenance services are only available within 15-36 months |
| 2 | Battery | 12 Months | Battery capacity < Original 60% |
| 3 | Frame | 24 Months | If there are manufacturing defects that lead to weld loss, breakage, and cracking , we will exchange for a new one. Frames that have been modified or have endured man-made damage are not covered. |
| 4 | Frame of front wheel | 12 Months | If there are manufacturing defects and serious damage, we can change for a new one. Damaged caused by the use of excess weight or by man-made damage are not covered |
| 5 | Cushion | 6 Months | If there is excess aging, cracks or a broken baseboard, we can exchange it for a new one. Damaged caused by the use of excess weight or man-made damages are not covered. |
| 6 | Controller ; Charger | 12 Months | If there is a function problem that cannot be repaired, we will exchange for a new one. |
| 7 | Headlight ; Alertor | 6 Months | If there is a function problem that cannot be repaired, we will exchange for a new one. |
| 8 | Front fork (including shocking proof) and back fork | 12 Months | If there are manufacturing defects that lead to weld loss, breakage, and cracking, we will exchange for a new one. Frames that have been modified or have endured man-made damage are not covered. |
| 9 | Meter | 12 Months | If there is a function problem and can not be repaired, we will change for a new one. |

5.1.1 Brake adjustments and service

To adjust brake bar.

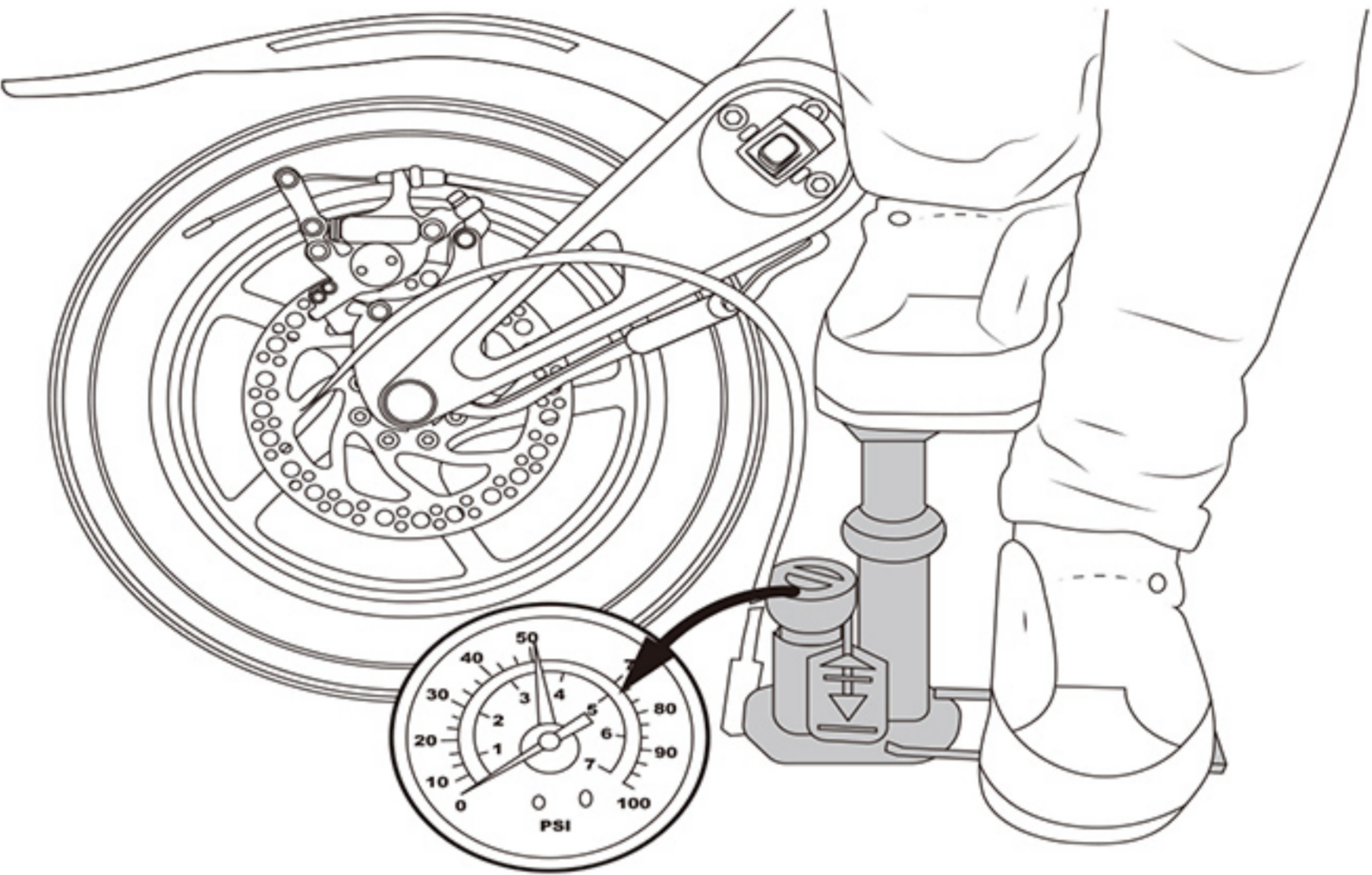


To check and change the braker.



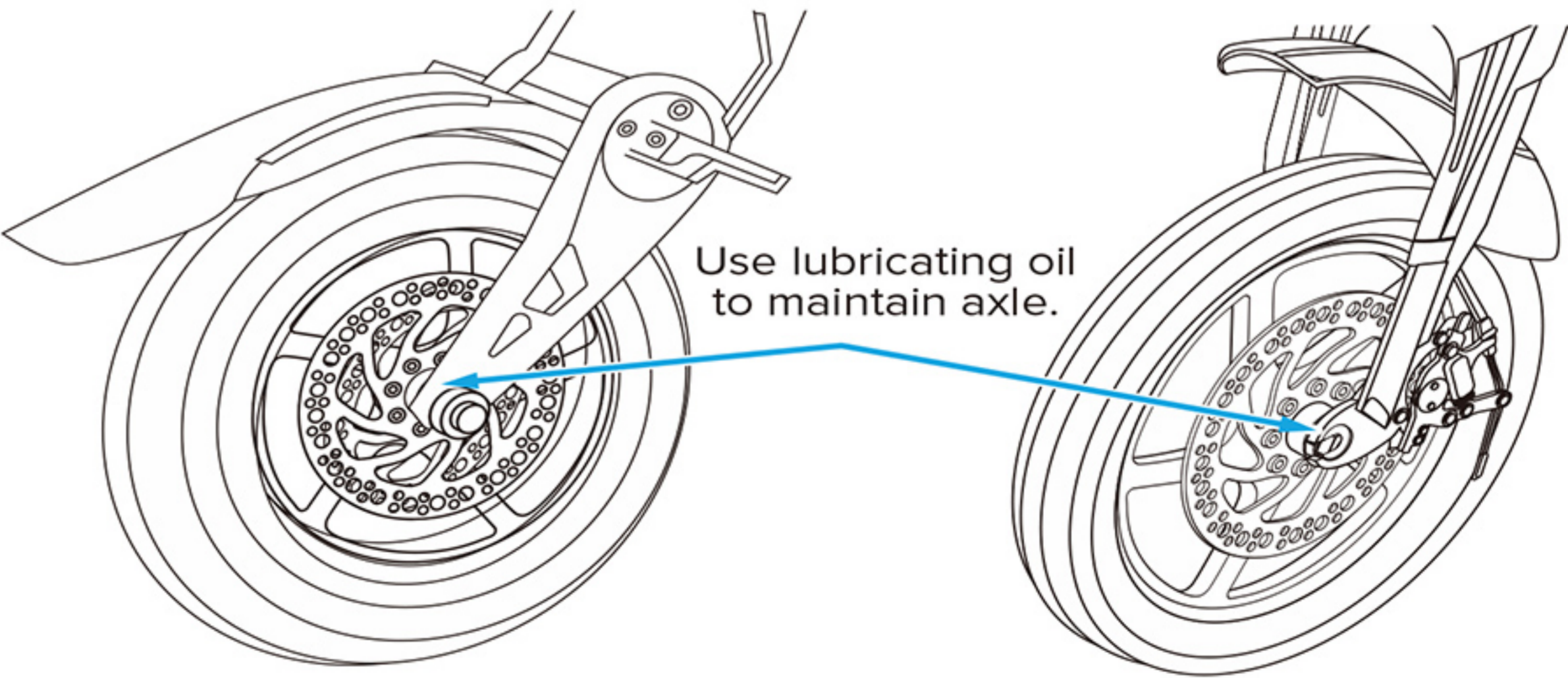
1. Loosen screws, pull out brake line and remove the braker.
 2. Install brake line, tighten the screws to test function of new brake.
- See Brake Warranty for After-Sales Support.
All Parts under limited manufacture warranty.

5.1.2 Tire inflation pressures



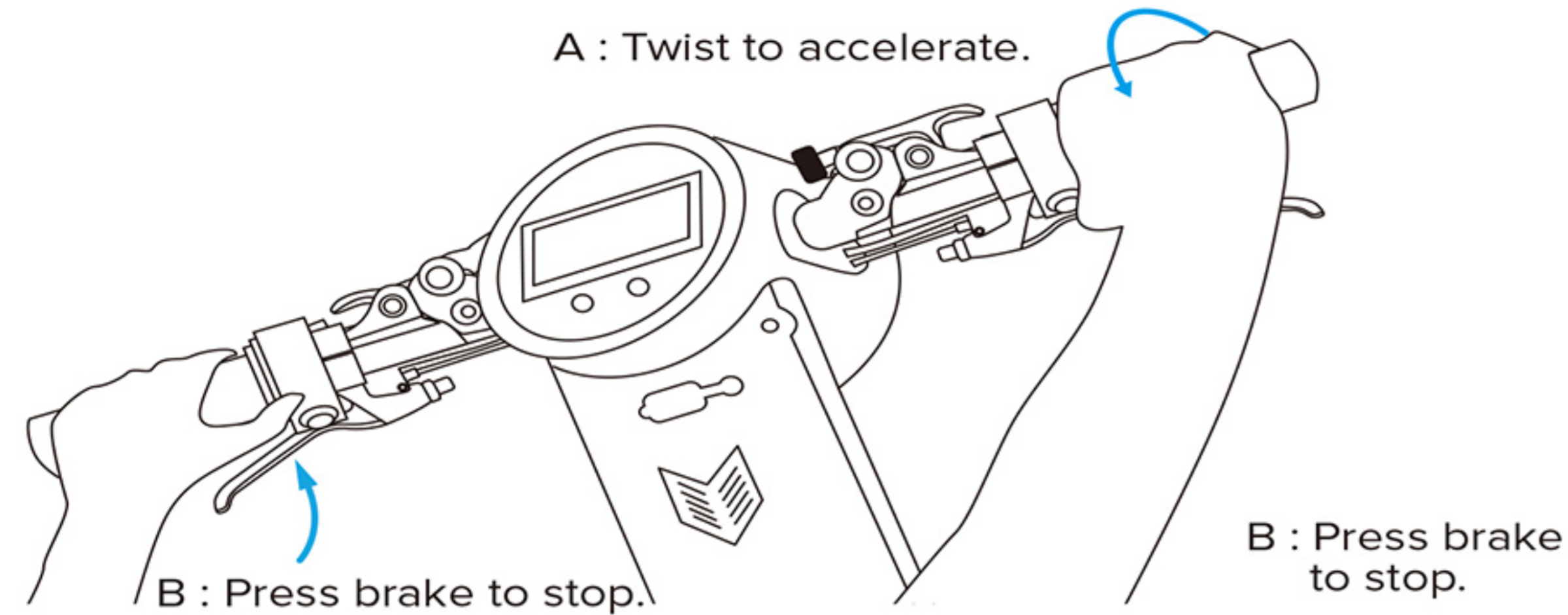
1. Using a bicycle-style tire pump equipped for a Schrader-type valve, inflate the front tire to the correct PSI indicated on the sidewall of the tire. Suggested pressure is **3.5psi to 3.8psi**.

5.1.3 Lubrication



NOTE: No lubricating oil should be used on the disk brake, this will cause the brakes to malfunction.

5.1.4 Drive system

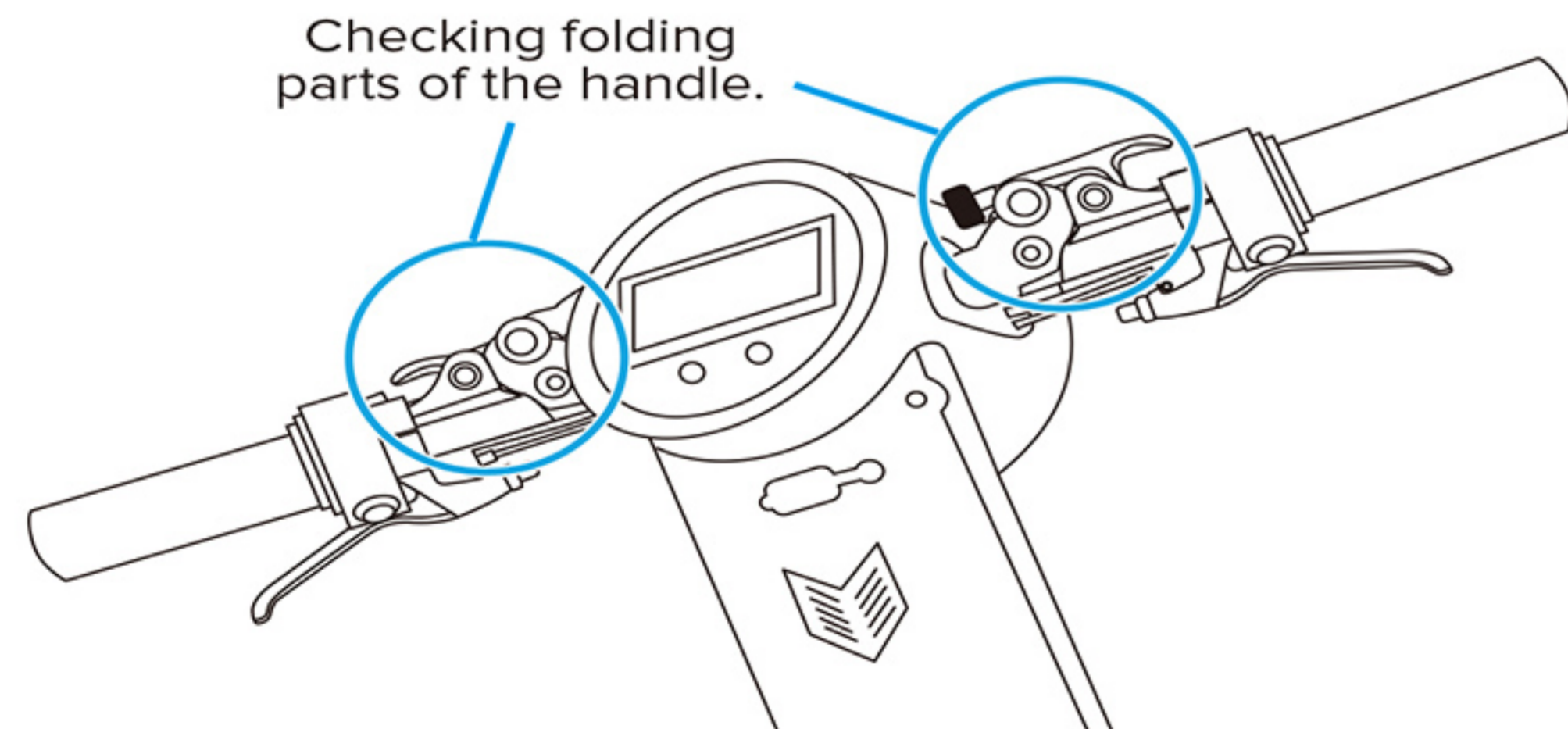


Twist accelerator bar to drive.
Press brake to stop.

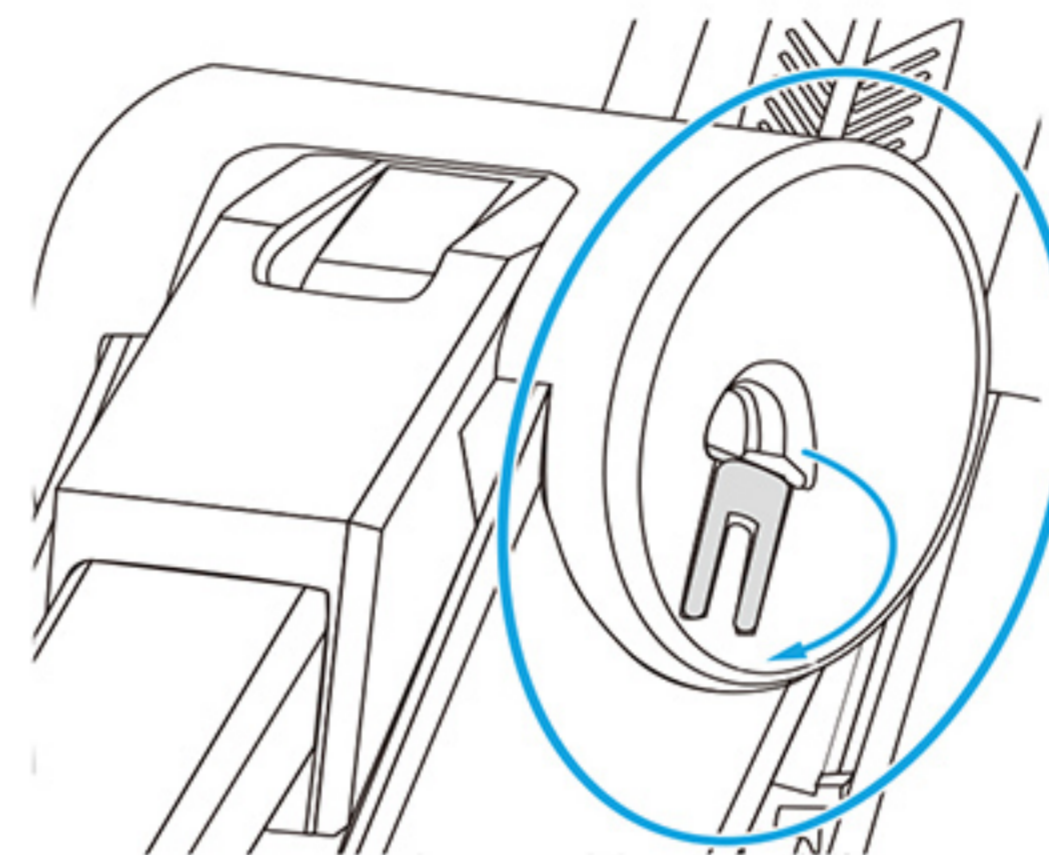
To start unit, turn on power switch; place both hands on handlebars, pressing the brake with left hand then applying the accelerator with right hand gently. Keep pressing the left brake until speed reached at 3mph (5km/hour). Right handle bar is accelerator, twisting it to get more speed. **For your safety,** do not driving over 15mph (24km/hour).

5.1.4 Drive system

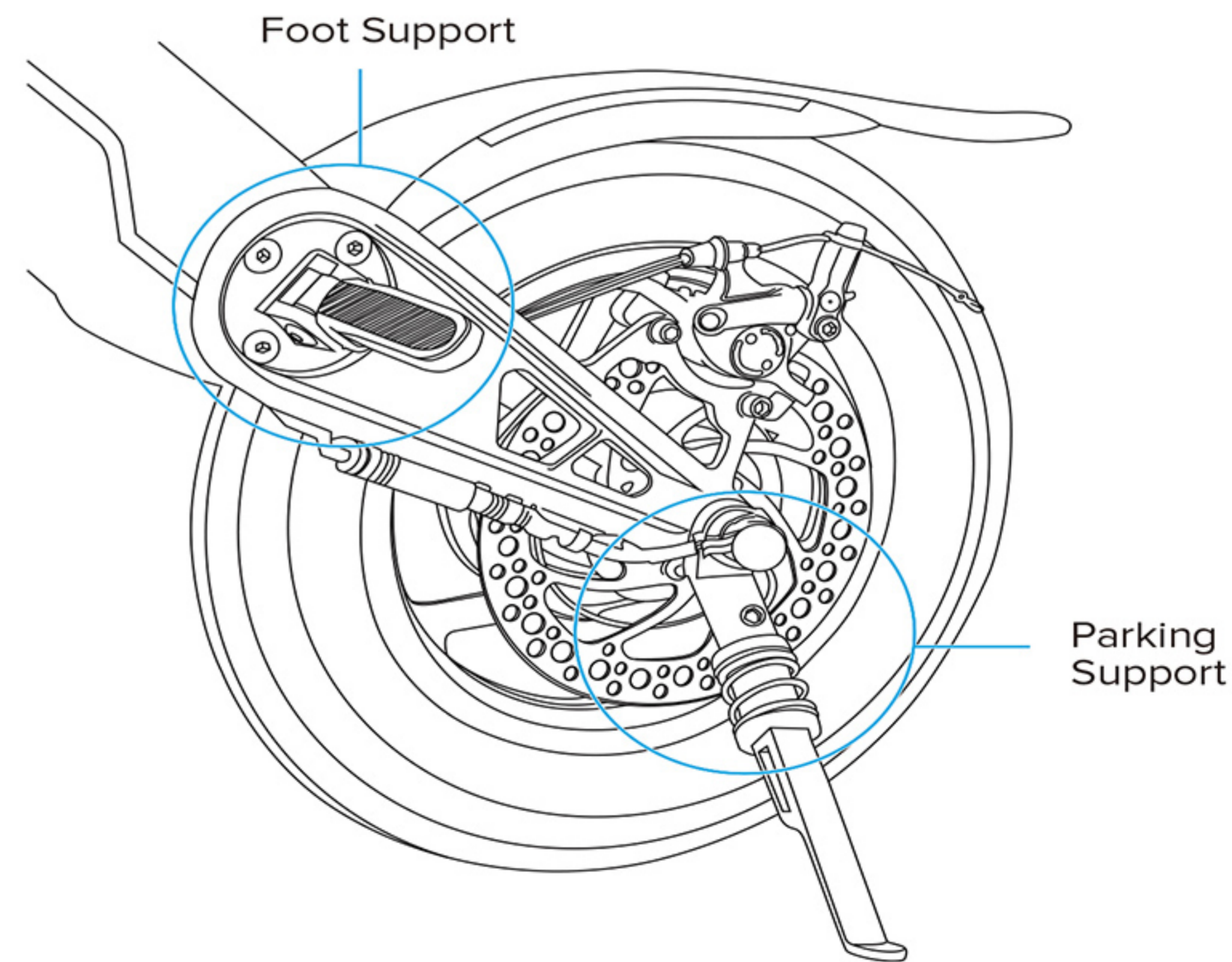
1. Checking folding parts of the handle, make sure is tightened.



2. Checking folding frame of the bike.
See guide of “how to folding” and check folding parts of the bike.
The folding lock must be secured.

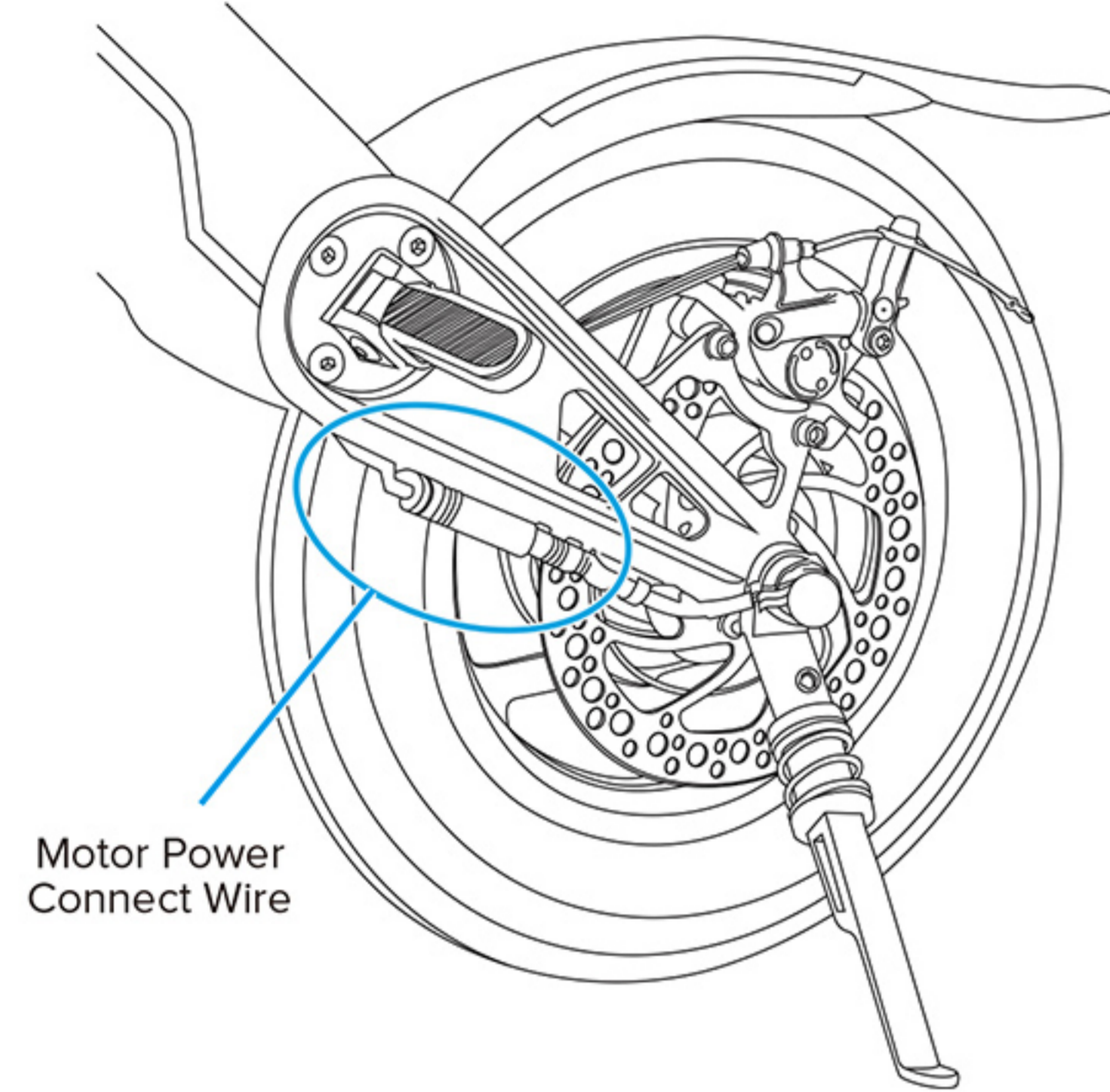


3. Checking foot support and parking support to see whether the screws loosen. And adjust the screws before driving.



4. The bike will not move if the power connection parts disconnect. Also if it has connection problem, the motor may will lose contral.

So check it, and make sure the connection in good condition. Which means it should be perfectly connect. If you are not sure, check the display to check motor connection situation.



5.2 Warranty Card

Full Name: _____ Phone Number: _____

Adress: _____

Distributor: _____ Operator: _____

Purchase date: _____ Quality Inspection Number: _____

Notice : In order to provide good after-sales service, please don't tear up or alter the outside carton barcode, or we will not provide maintenance service.

Importer: SOFTLINK NETWORKS,LLC

Address: 921 N Harbor Blv. Suite 445, La Habra, CA90630

Support E-mail: support@scoot360.com

Toll Free Number: 885-284-8070

Warranty Registration Link:

http://www.scoot360.com/Warranty-Details-and-Registration_ep_44.html

Stick Barcode
Here

[illegible]

CAUTION:

The user is cautioned that changes or modifications not expressly approved by the party responsible for compliance could void the user's authority to operate the equipment.

This device complies with Part 15 of the FCC Rules. Operation is subject to the following two conditions: (1) this device may not cause harmful interference, and (2) this device must accept any interference received, including interference that may cause undesired operation.

NOTE:

This equipment has been tested and found to comply with the limits for a Class B digital device, pursuant to Part 15 of the FCC Rules. These limits are designed to provide reasonable protection against harmful interference in a residential installation. This equipment generates, uses and can radiate radio frequency energy and if not installed and used in accordance with the instructions, may cause harmful interference to radio communications. However, there is no guarantee that interference will not occur in a particular installation. If this equipment does cause harmful interference to radio or television reception, which can be determined by turning the equipment off and on, the user is encouraged to try correcting the interference by one or more of the following measures:

- Reorient or relocate the receiving antenna.
- Increase the separation between the equipment and receiver.
- Connect the equipment into an outlet on a different circuit from which the receiver is connected.
- Consult the dealer or an experienced radio/TV technician for help.

This equipment complies with FCC radiation exposure limits set forth for an uncontrolled environment. This transmitter must not be co-located or operating in conjunction with any other antenna or transmitter.

WARNING - Keep away from moving parts.

Warranty Details and Registration**Return Policy****What does this warranty cover?**

This Limited Warranty covers the original purchaser from any defects in material or workmanship under normal use for one year from the date of invoice. This warranty is only offered to the original purchaser of the product, and is not transferable to a subsequent purchaser. Scoot360.com will either repair or replace the product at no charge, using new or refurbished replacement parts are our discretion. Replacements may be different but functionally equivalent models.

What does this warranty not cover?

This Limited Warranty does not cover any problem that is caused by conditions, malfunctions, or damage not resulting from defects in material or workmanship. These conditions may include, but are not limited to, road hazards, accidents, and improper operation or maintenance.

Limitation of Liability:

In no event shall Scoot360.com be liable for any incidental, indirect, special or consequential damages or liabilities (including but not limited to incidental or consequential damages for loss of time, inconvenience, loss of use of product, or any other consequential or incidental loss) in connection with the purchase, use, or operation of the product. Scoot360.com is not liable for property damage, personal injury, or death.

Make your trips enjoyable while making the city better.
Lessen your carbon footprint with clean, exhaust free trips.

SMART E-SCOOTER
Fashionable/Portable/Smart


ELECTRONIC SCOOTERS