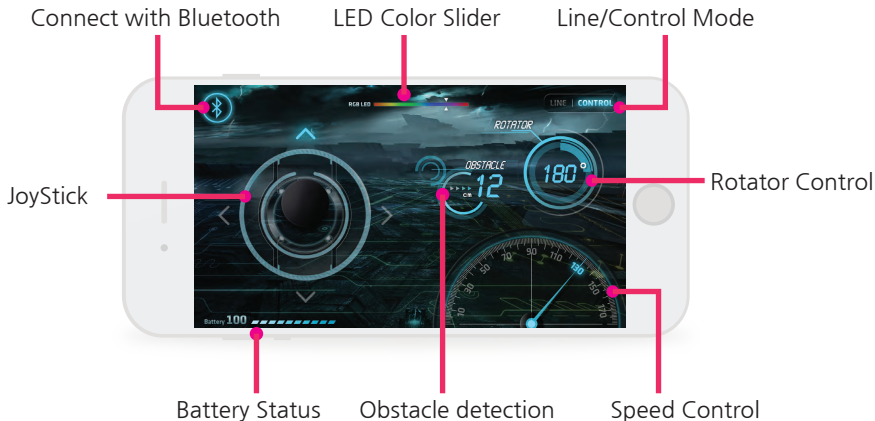


Download App



Download the “KamiBot Control” app from the App Store.

App Layout

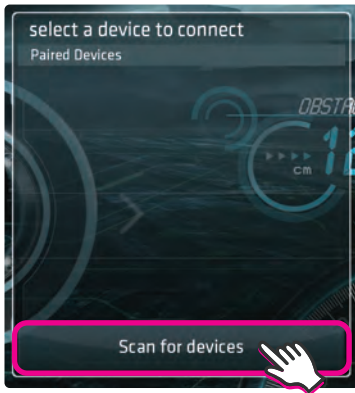


Connecting to Kamibot

1. Press the button marked with the Bluetooth Icon .



2. Press “Scan for devices” .



*Note: Kamibot must be turned on

Line Mode

1. Place Kamibot on a surface with a black line.
2. Press “LINE”.



3. Kamibot will follow the black line.

Control Mode

1. Users can remotely control Kamibot's movement in Control Mode.
2. Press “CONTROL”.



3. Move and control Kamibot with the Joystick.

Moving Kamibot

1. Move Forward



2. Reverse



3. Turn Right



4. Turn Left



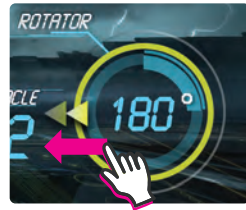
LED Color Slider

1. Tap and drag the slider left and right on the Color slider.
2. By moving the slider, you can select many different colors .



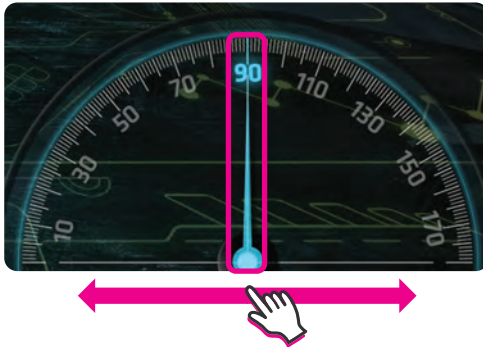
Rotator Control

1. Tap and drag right to turn clockwise
2. Tap and drag left to turn counter-clockwise.



Speed Control

1. Tap and drag the needle left and right to control the speed of Kamibot
2. The speed adjusts between 0 ~ 180.



ON/OFF

1. The ON/OFF switch is on Kamibot's underside



2. Turn on by switching right.



3. Turn off by switching left.



Charging Kamibot

1. There is a USB port on Kamibot's backside.



2. When Kamibot is finished charging the small red LED will turn blue.

FCC ID : 2AH2J-KAMIBOT

This device complies with part 15 of the FCC Rules. Operation is subject to the following two conditions: (1) This device may not cause harmful interference, and (2) this device must accept any interference received, including interference that may cause undesired operation.

Any changes or modifications (including the antennas) made to this device that are not expressly approved by the manufacturer may void the user's authority to operate the equipment.

This equipment complies with FCC RF Radiation exposure limits set forth for an uncontrolled environment. This device and its antenna must not be co-located or operating in conjunction with any other antenna or transmitter.

This equipment should be installed and operated with a minimum distance of 20 centimeters between the radiator and your body.

RF du FCC d'exposition aux radiations: Cet équipement est conforme à l'exposition de la FCC rayonnements RF limites établies pour un environnement non contrôlé. L'antenne pour ce transmetteur ne doit pas être même endroit avec d'autres émetteur sauf conformément à la FCC procédures de produits Multi-émetteur.

Cet équipement doit être installé et utilisé avec une distance minimale de 20 centimètres entre le radiateur et votre corps.

Note : This equipment has been tested and found to comply with the limits for a Class B digital device, pursuant to part 15 of the FCC Rules. These limits are designed to provide reasonable protection against harmful interference in a residential installation. This equipment generates, uses and can radiate radio frequency energy and, if not installed and used in accordance with the instructions, may cause harmful interference to radio communications. However, there is no guarantee that interference will not occur in a particular installation. If this equipment does cause harmful interference to radio or television reception, which can be determined by turning the equipment off and on, the user is encouraged to try to correct the interference by one or more of the following measures:

- Reorient or relocate the receiving antenna.
- Increase the separation between the equipment and receiver.
- Connect the equipment into an outlet on a circuit different from that to which the receiver is connected.
- Consult the dealer or an experienced radio/TV technician for help.

Modifications not expressly approved by the manufacturer could void the user's authority to operate the equipment under FCC rules.