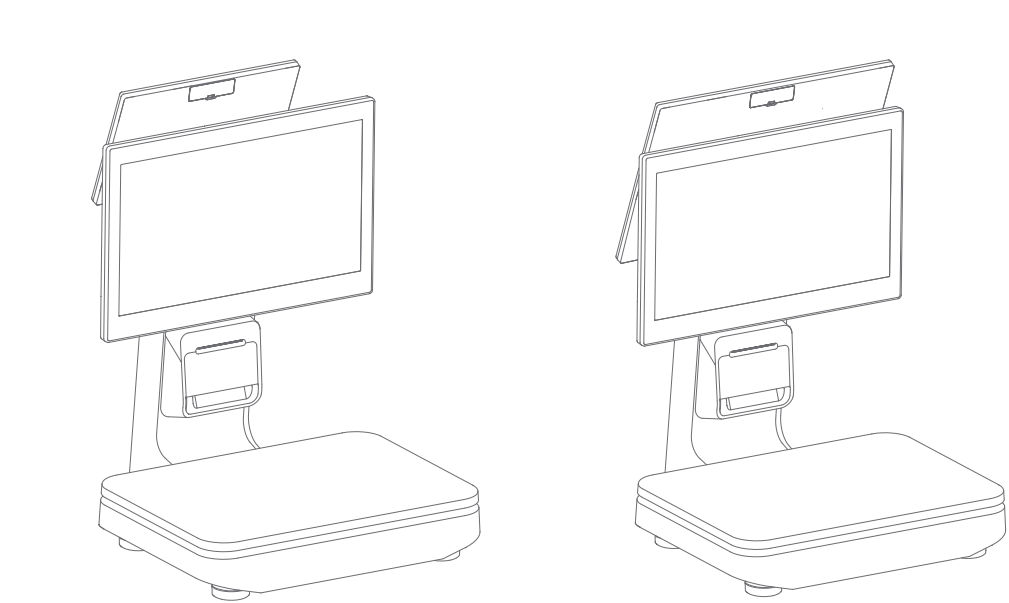




封面

封底

Smart Electronic Cashier Scale



Main display: 15.6" (FHD 1920 x 1080)
Secondary display: 10.1" (1024 x 600)

Main display: 15.6" (FHD 1920 x 1080)
Secondary display: 15.6" (FHD 1920 x 1080)

There're three types of range specifications for you to choose in S2 CC:

Spec 1	Spec 2	Spec 3
Ranges Max=3/6kg, Min=20g	Ranges Max=6/15kg, Min=40g	Ranges Max=15/30kg, Min=100g
Division value e=0.1/2g	Division value e=0.2/5g	Division value e=0.5/10g

*Please read this User Guide carefully before use, and keep the warranty card and the product certificate properly.

Simple Setting

It only takes several steps to enable this smart commercial instrument.

- Press the power button to turn on the instrument, enter the initial boot-up interface, then follow the prompts. Two on-line modes for choice.
- WiFi setting
 - Click "Setting" button, and then enable WLAN, enter WLAN search interface to wait for its searching and listing available WLAN hotspots;
 - Click WLAN to be connected. If an encrypted network is selected, you are required to enter access password to get connected.
- LAN setting

How to download/use Apps

You may open the App Store once the instrument is connected, browse and download the apps you need and complete the installation.

List of preinstalled software in the system

- App Store · Instruction · POS Steward · Feedback · Remote Assistance
- Gallery · Downloads · Calculator · ShopCenter

Scale Sealing

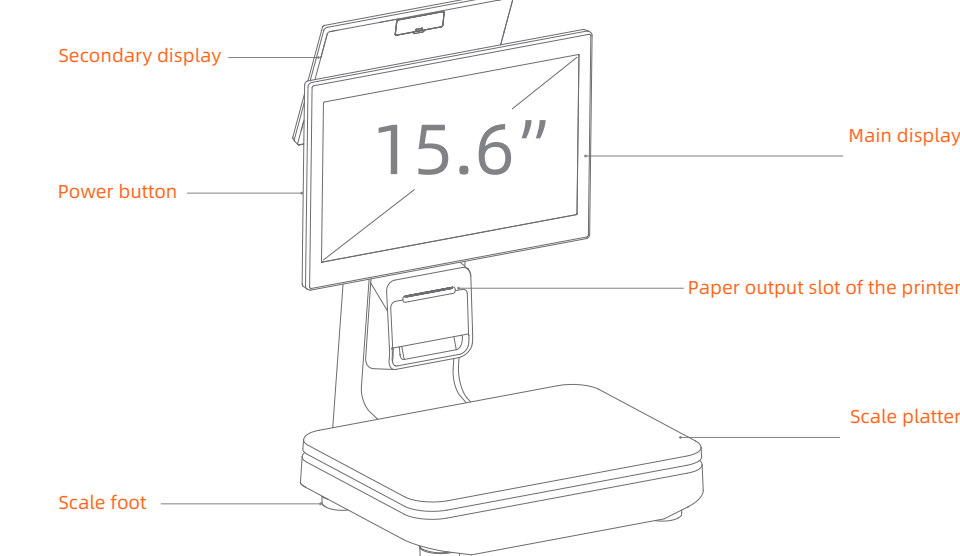
When the scale is used in trade or a legally controlled application, it must be set up, verified and sealed in accordance with local weights and measures regulations. It is the responsibility of the owner or the operator to ensure that all pertinent legal requirements are met. As verification requirements vary by jurisdiction, the owner or the operator should contact their local weights and measures office if they are not familiar with the requirements. To prevent access to calibration and metrological settings, please check the scale is well sealed by the wire seal.

* This scale is a precise weighing instrument. Before you start to use this scale, please read this user guide carefully. We advise you to keep this user guide properly for future reference. Do not disassemble and open the scale by yourself. Only trained and authorized servicemen is allowed to repair the scale. Disconnect the power cable before cleaning and maintenance.

Please read the built-in help App for more usage guide

Product Introduction

(Take the scale with big and small displays as an example)



Power button

Short press to power on the scale under the status of shutdown; Long press for 2-3 seconds to shut down or reboot the scale when it's in working status. Long press for 11 seconds to power off the scale when it's crashed or down.

Main display

This touch screen is used by the operator.

Secondary display

This display faces to the customer with advertisements showing on it.

Paper output slot of the printer

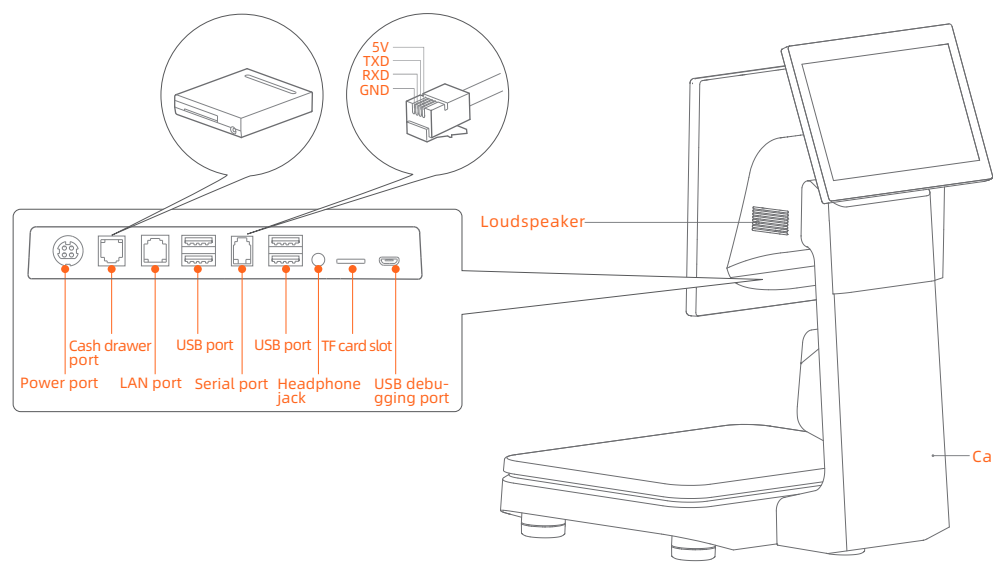
It's used to print receipts when the scale is turned on.

Scale platter

It's used for placing weighing items.

Scale feet

The four scale feet can be adjusted for leveling the scale.



USB port

It can be used to connect an external keyboard, a mouse, or a U disk.

Cable cover

Different kinds of cables can be organized under the cover.

TF card slot

A TF card can be inserted into the slot.

Micro USB debugging port, a port for debugging functions

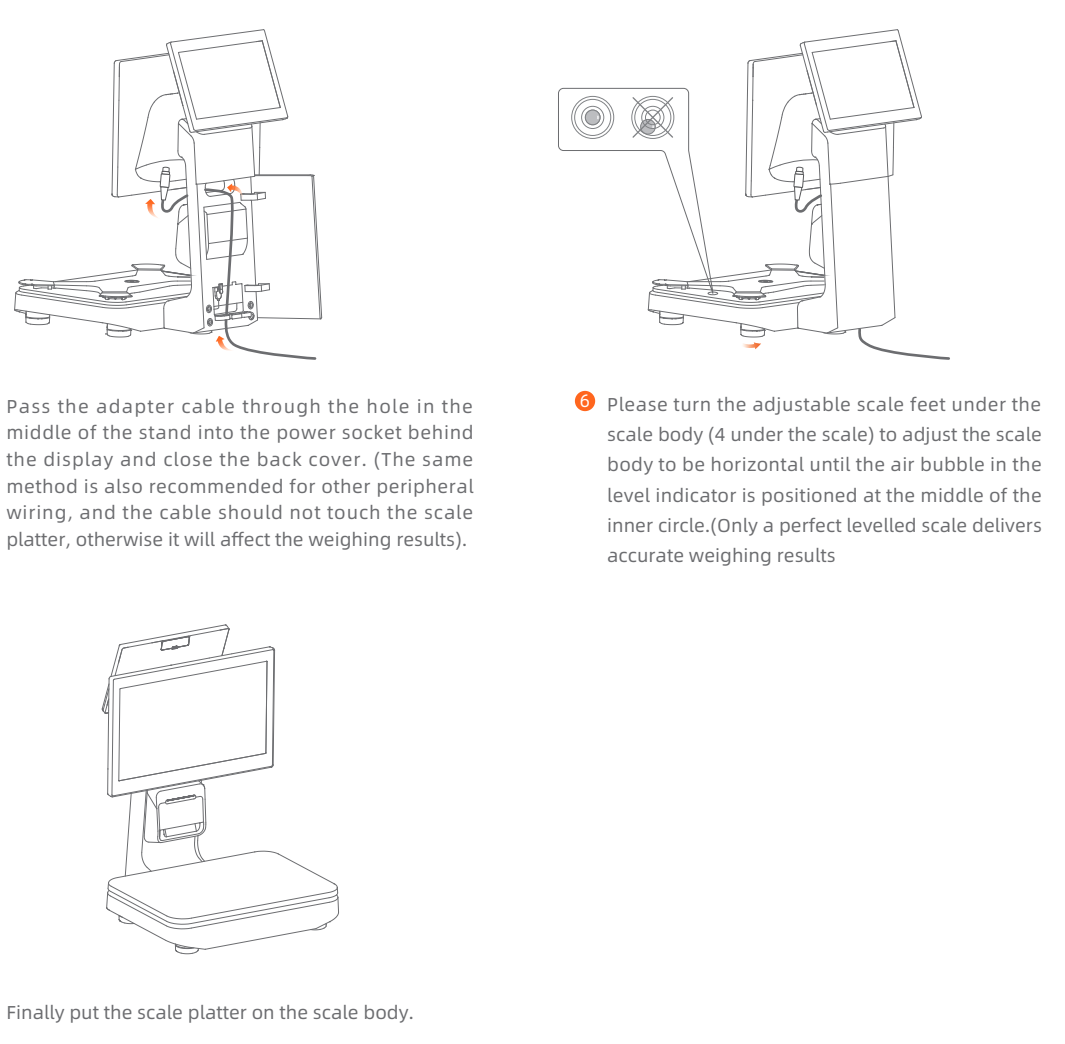
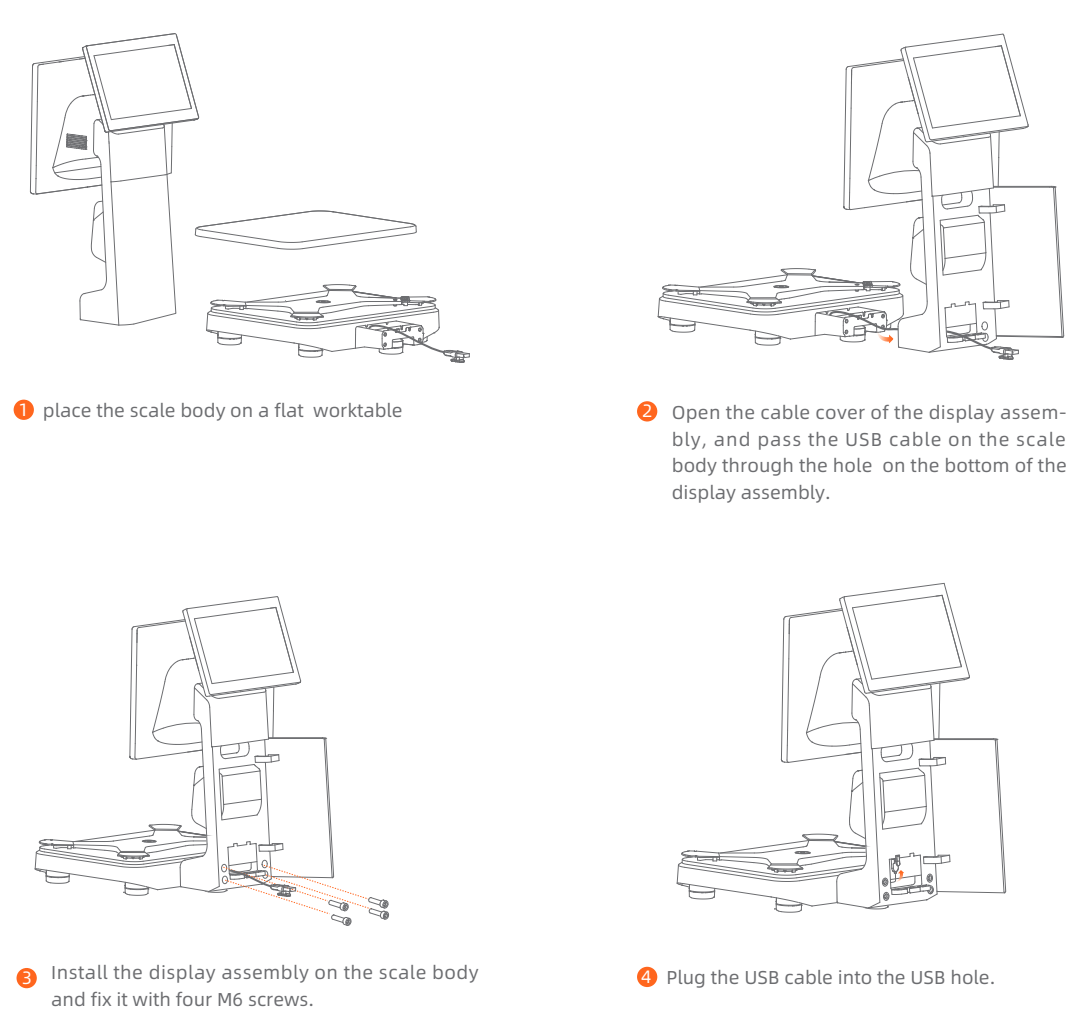
This port can be used during instrument debugging.

Cash drawer port

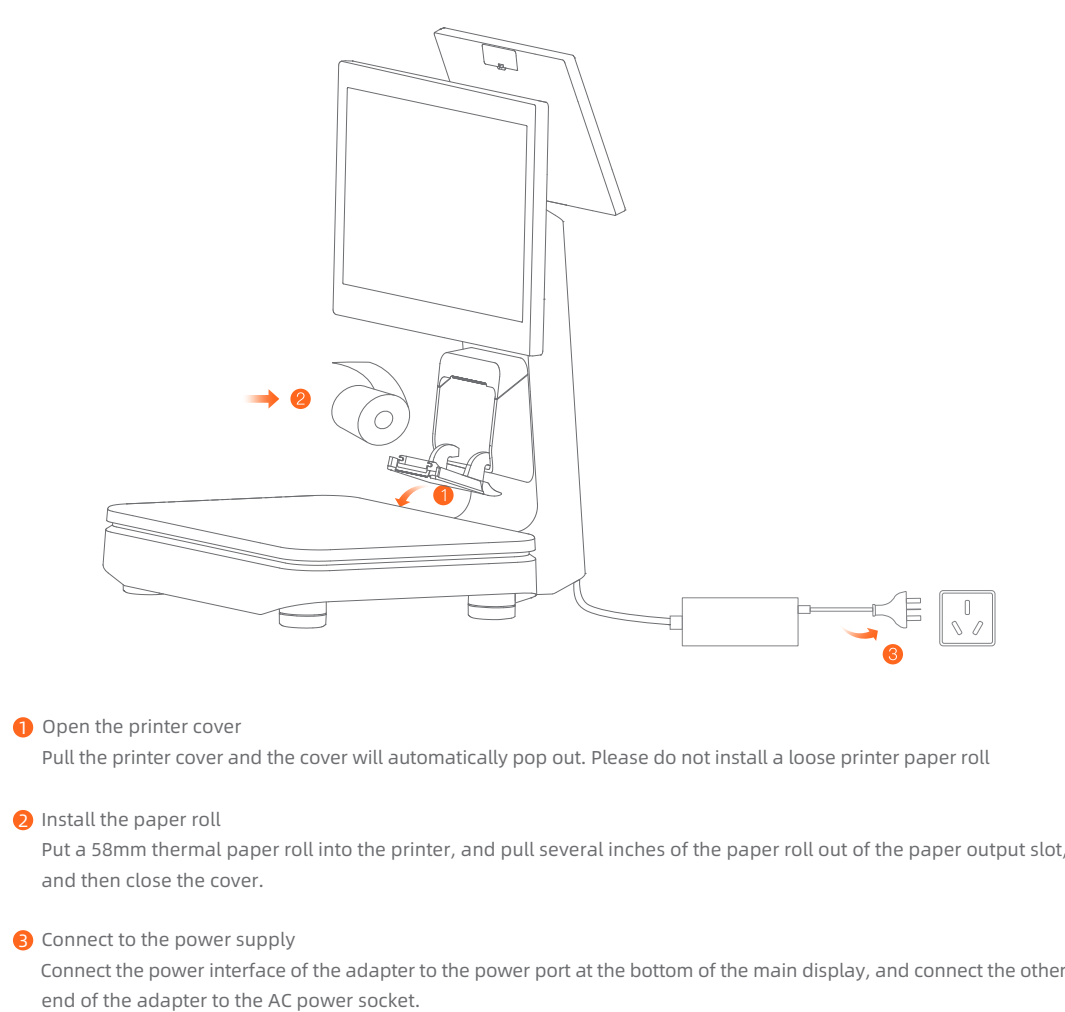
It's used to connect a cash drawer and a 120ms electrical pulse will be output, but continuous power supply won't be possible.

Note: This instrument only supports a 24V/1A cash drawer. The circuit of the cash drawer may be burnt if you connect the instrument to a 12V cash drawer.

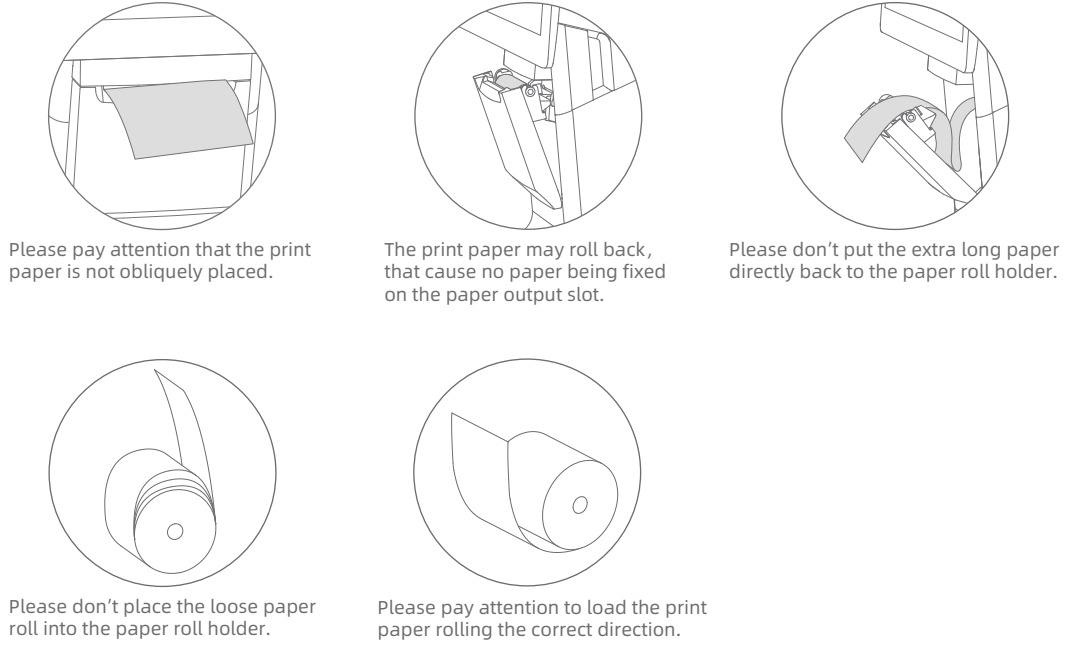
How to Install the Scale



How to Install the Printer Paper Roll



Wrong Operations for the Print Paper



Verification information

The identification plate of the instrument has a CE mark, a metrology mark (Mox) and the number of the notified body. This instrument must undergo a conformity assessment, verified and sealed according to local weights and measurement regulations when it is used for trade. Scales without metrology mark are not allowed for trading. The purchasers will take all responsibilities to ensure such requirements are met. They can also contact local regulation departments for help if they are not clear. The verification should be executed according to country regulations. It should start as soon as the instrument is put on the field. And the validity period could be different in different countries.

Common Troubleshooting

Symptoms	Solution
When there is a crash	Long press the power button for 11 seconds, to power off the instrument, then short press to boot up.
The printer doesn't work	· Confirm that the cover of paper roll holder; · Confirm whether paper jam fault has occurred or not.
The printing content is blank	· Please check whether the paper roll has been reversed or not; · Please check whether 80mm thermal print paper roll has been used or not.
The printing content is vague	· Please check whether the thermal head piece is dirty or not. If it is dirty, please wipe it with cotton swabs dipped by absolute alcohol; · Please change the thermal paper with quality assurance to avoid the vague printing caused by paper quality.
Inaccurate weighing	· Please remove the scale platter, and check whether the bubble is in the middle position or not; · Check whether the 4 scale feet are firmly contacted to the table or not; · Check whether there are sundries in the place of the X shape bracket to cause inaccurate weighing.
Unstable weighing	Check there is obvious air flow around the scale, for example the air conditioner vent; Check the voltage input is stable or not Check the power outlet is grounded correctly or not; Don't connect the scale power with other high power consumption electronics such as big refrigerators.

Mode/Band	Operation Frequency	Power (dBm)
BT	2402-2480MHz	9.07
BLE	2402-2480MHz	5.92
2.4G WiFi	2412-2472MHz	18.94
5.2G WiFi	5150-5250MHz	16.46
5.3G WiFi	5250-5350MHz	17.32
5.5G WiFi	5470-5725MHz	16.02
5.8G WiFi	5725-5850MHz	13.88

Specifications of Smart Counter Scale

Operating system	Android
Display	15.6 inch Resolution 1920 x 1080
Storage	2G+16G/3G+32G/4G+64G
Touch screen	Multipoint capacitive touch screen
WiFi	802.11 a/b/g/n(2.4Ghz/5Ghz)
Bluetooth	Bluetooth 4.0 BLE
Printer	58mm thermal printer
Speaker	3W
External interfaces	4x USB typeA, 1x RJ11 serial, 1x RJ12 24V cash drawer, 1x RJ45 LAN, 1xheadphone, 1x power, 1x Micro-USB debug, 1xTF card
External storage card	Support MicroSD(TF), up to 64G
Whole machine size	400x408x553mm/400x408x583mm
Power adapter	Input:AC100~240V/1.7A 50Hz output:DC24V/2.5A
Accuracy class	III
Maximum Capacity	3/6kg/6/15kg/15/30kg
Scale intervals	1/2g/2/5g/5/10g
Minimum Capacity	20g/40g/100g
Operating temperature	-10°C~+40°C
Humidity	Relative humidity ≤ 95%, non-condensing
Limited altitude	below 5000 meters

Points for Attention

Safety Warning

- Please insert the AC plug into the AC socket corresponding to the input voltage of the power adapter;
- It is strictly forbidden to use it at a site with the existence of any potential explosive gas;
- Non-professionals are not allowed to tear down the power adapter to avoid dangers;
- This is a Class A product, which may cause radio interference in a living environment. Thus, the user may be required to carry out feasible measures against the interference.

Important Safety Instructions

- Do not install or use the instrument during lightning storms to avoid the potential risks of lightning shock;
- When you have discovered unusual odor, overheat or smoke, please cut off the power supply at once!

Disclaimer

Due to product update, certain details of this document may be inconsistent with the product, and the real instrument shall prevail. SUNMI owns the interpretative right of this document, and reserves the right to modify this user guide without prior notice.

Important Safety Instructions

- Avoid it to be installed or used during the thunder & lightning period, otherwise there will be risk of being electrically shocked by it;
- When you have discovered unusual odor, overheat or smog, please cut off the power supply at once!
- The paper knife is relatively sharp, please don't touch it!
- Avoid to use it in a humid environment; avoid to use it at a site that is dusty or easy to burn & explode;
- It must be ensured that the grounding of the socket power system comply with the relevant standards, otherwise it may cause personal injury;
- After unpacking and installing the instrument, please firstly adjust scale feet to make the bubble in the spirit level at the metal base to be in the center of the spirit level, and adjust the adjusting nut at the scale feet to be against the bottom of the scale body base to fix it.

Fiscal regulations

Fiscal regulations may apply in some countries. We recommend you to contact local fiscal authorities if you are not clear about it. In order to follow your local fiscal regulations, please make sure that the time, the date, the company name and the company address are set correctly.

Data protection

This instrument may only be used in a secured internal network. If it is connected to the internet, unauthorized access is possible. The data in this instrument could be copied, damaged or even stolen. The purchaser or user should take all responsibilities for this loss. We recommend you to do data backup periodically.

FCC compliance statement

This instrument complies with Part 15 of the FCC Rules. Operation is subject to the following two conditions: (1) this instrument must not cause harmful interference, and (2) this instrument must accept any interference received, including interference that may cause undesired operation. Note: This equipment has been tested and found to comply with the limits for a Class B digital device, pursuant to part 15 of the FCC Rules. These limits are designed to provide reasonable protection against harmful interference in a residential installation. This equipment generates, uses and can radiate radio frequency energy and, if not installed and used in accordance with the instructions, may cause harmful interference to radio communications. However, there is no guarantee that interference will not occur in a particular installation. If this equipment does cause harmful interference to radio or television reception, which can be determined by turning the equipment off and on, the user is encouraged to try to correct the interference by one or more of the following measures: —Reorient or relocate the receiving antenna. —Increase the separation between the equipment and receiver. —Connect the equipment into an outlet on a circuit different from that to which the receiver is connected. —Consult the dealer or an experienced radio/TV technician for help.

Caution: The user is cautioned that changes or modifications not expressly approved by the party responsible for compliance could void the user's authority to operate the equipment.

ISED Canada compliance statements

This device complies with ISED Canada licence-exempt RSS (standards). Operation is subject to the following two conditions: (1) this device may not cause interference, and (2) this device must accept any interference, including interference that may cause undesired operation of the device. Le présent appareil est conforme aux CNR d'ISED Canada applicables aux appareils radio exempts de licence. L'exploitation est autorisée aux deux conditions suivantes: (1) l'appareil ne doit pas produire de brouillage, et (2) l'appareil doit accepter tout brouillage radioélectrique subi, même si le brouillage est susceptible d'en compromettre le fonctionnement.

EU regulatory conformance

Herby, Shanghai Sunmi Technology Co., Ltd. declares that this instrument is in compliance with the essential requirements and other relevant provisions of Radio Equipment Directive 2014/53/EU and measuring instrument requirements of Directive 2014/31/EU. The full text of the EU declaration of conformity is available either at the following internet address or in the carton box: <https://developer.sunmi.com/docs/read/en-US/maaeqk480>.

INFORMATION ABOUT THE SOFTWARE

The description of accessories and components, including software, which allow the radio equipment to operate as intended, can be obtained in the full text of the EU declaration of conformity either at the following internet address or in the carton box: <https://developer.sunmi.com/docs/read/en-US/maaeqk480>.

RESTRICTIONS OF USE

This product may be used in the following European member states subject to the following restrictions. For products that operate in the frequency band 5,150 to 5,350 GHz, wireless access systems (WAS), including radio local area networks (RLANs), shall be restricted to indoor use.

CE

EU Representative: SUNMI France SAS

188, Avenue Thiers, 69006 Lyon, France



This symbol means that it is forbidden to dispose of the product with normal household waste. At the end of the product life cycle, waste equipment should be taken to designated collection points, returned to the distributor when purchasing a new product, or contact your local authority representative for detailed information on WEEE recycling.

RF Exposure Statement (SAR)

- This equipment complies with EU, FCC and IC RSS-102 radiation exposure limits set forth for an uncontrolled environment.
- This equipment should be installed and operated with minimum distance 20cm between the radiator and your body.

Points for Attention

Requirements for scale using conditions

- To get the precise and stable weighing result, the scale has to be placed at a proper location.
- On a table or a desk without vibrations and shocks;
- Not directly under air-conditioner vent, keep away from strong air flows;
- Indoor use only and no strong UV light;
- Appropriate ambient temperature: 20~+25°C (68~+99°F) is recommended;
- Power outlet should be grounded correctly;

Safety warning

- Please plug the AC plug into the AC socket corresponding to the identification input on the power adapter of the accessory;
- It is strictly forbidden to use it at a site with the existence of any potential explosive gas;
- Non-professionals are not allowed to tear down the power adapter to avoid dangers;

Scales can only be used in predefined gravity zone

Connection of the NMI to a Point of Sale (POS/PG) system requires POS manufacturers or owner of the equipment to ensure Declaration of Conformity for complete system.

Disclaimer

Due to the product update, certain details of this document may be inconsistent with the product. Please refer to the real subject. Our company owns the interpretative right of this document. We reserve the right to modify this user guide without giving advance notice. Please properly and regularly maintain the printer.

Conformity Certificate

Name: Smart Counter Scale

Type: S2 CC

Serial Number:

Date:

Manufacturer: Shanghai Sunmi Technology Co., Ltd.
Address: Room 505, No. 388, Song Hu Road, Yang Pu District, Shanghai, China
Website: www.sunmi.com

Accuracy class: III

Tel: 400-6666-509

S2 CC_品牌版英文说明书_Manual_20240124_V1.1

技术要求:

- 1、材质：128g哑粉纸
- 2、工艺：单色+专色印刷 +骑马钉（2钉骑马钉）PANTONE 165C PANTONE Orange021C
- 3、尺寸：160x160mm 公差±1mm
- 4、商米料号：M05054386