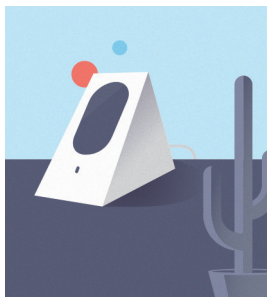


### 1. Set up Starry Station.

During Starry Station setup, you'll get the option to add a Wing. Follow the steps on the screen to begin.

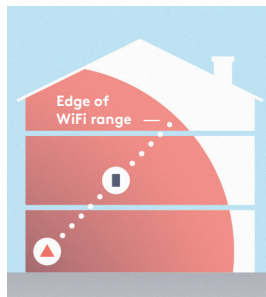
**If your Station has already been set up, visit your Station's Settings menu to add a Wing.**



### 2. Find a home for Wing.

Think of the spot farthest from Starry Station that you still get WiFi. The midpoint between that spot and Station is a good place for Wing.

Next, plug it into an outlet that is out in the open, not hidden behind anything.



### 3. Finish setup on Starry Station.

Once Wing is plugged in and its lights are on, go back to your Starry Station. Follow the steps "on the screen to finish setting up your WiFi system.



## Status Lights



All good



Starting or updating



There's an issue

To reset your Wing, press and hold the button for about 10 seconds.

Get more info  
[Starry.com/support](https://starry.com/support)

### Contact us

Request a call through  
Starry Station or email  
[support@starry.com](mailto:support@starry.com)



# Let's get started.